

# CLINICARMOUR

## Fitting Instructions

The examination table covers are designed to fit the majority of examination table sizes and shapes. Each fits easily and snugly to ensure a single wipe down, protective cover for your treatment tables.

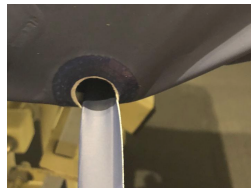
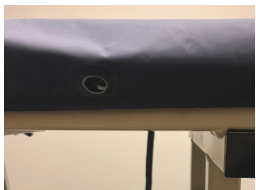
### Step 1

Place the cover on the bed with the face hole aligned at one end. The elastic edge should fit around the edge on all sides.



### Step 2

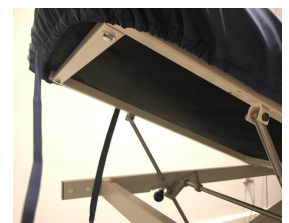
Tighten the side straps under the table and through the eyelets. Caution not to over tighten. Repeat for both side straps.



If any of the sections is a tilt section please attach to the table surface unit only and not the base to avoid any tearing the straps if the table is tilted.

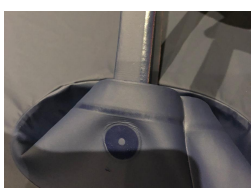
### Step 3

Tension the end strap to adjust the length of the cover. Tie this back to the side strap.



### Step 4

Tension the straps either side of the face-hole by returning the strap under the table and through the eyelets. Trim strap lengths as required.



### Step 5

The face hole should now be open. If there are any folds you can use double sided tape to hold back any areas.

