

## 275/290//ALLOY - EXPLODED DIAGRAM

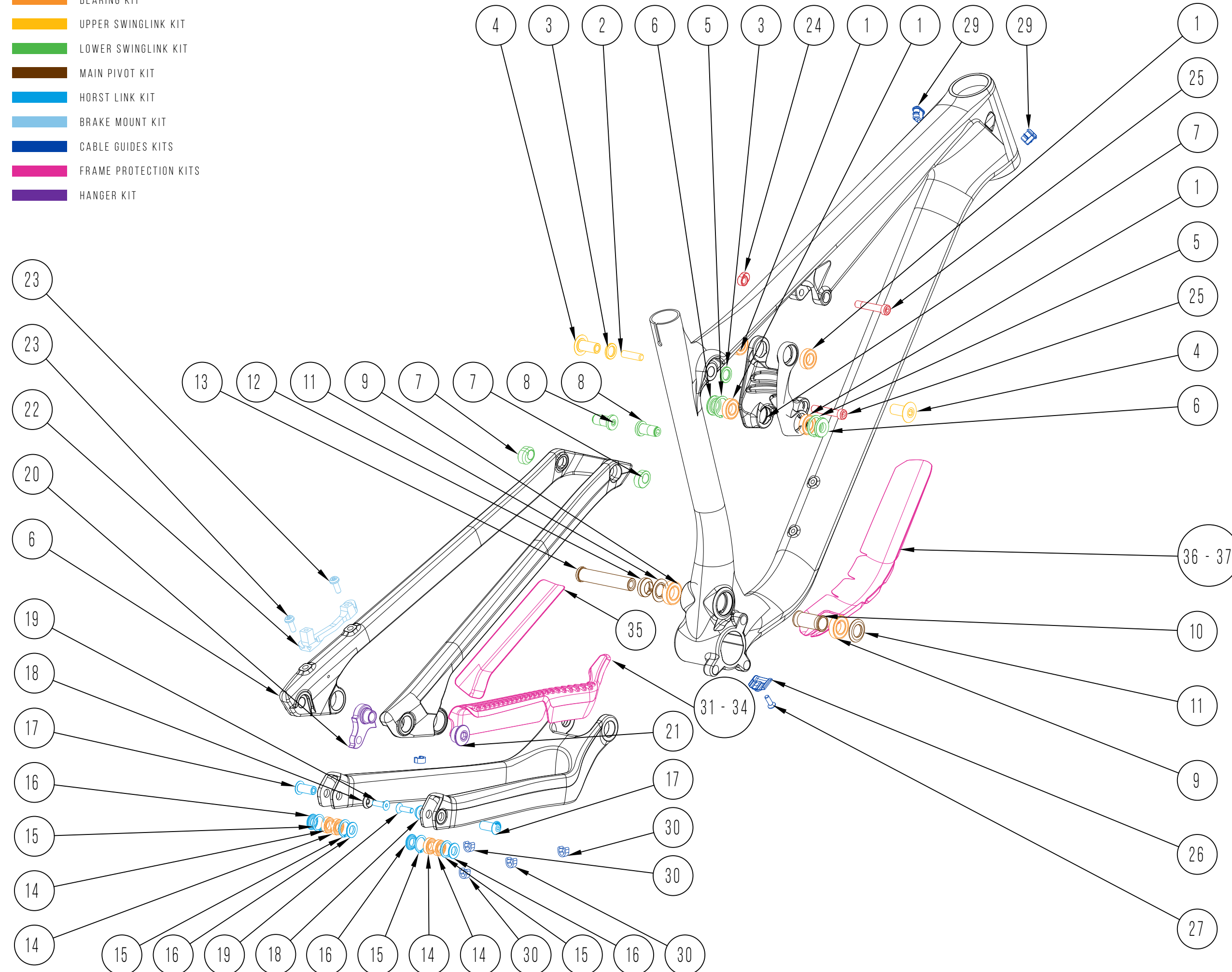
### REACTOR 275 ALLOY

MATERIAL	HYDROFORMED 6061 TRIPLE-BUTTED ALUMINIUM
FORK TRAVEL	150MM (RS 160MM)T
AXLE TO CROWN	545MM (RS 555MM)
AXLE TO CROWN	46MM
SHOCK TRAVEL	140MM
WHEELS SIZE	27.5"
MAX TYRE SIZE	2.6"
SHOCK SIZE	210X55MM
SHOCK HARDWARE F	25X8MM
SHOCK HARDWARE R	30X8MM
SIZING	S/M/L/XL
HEADTUBE	44-56MM TAPERED SEMI-INTEGRATED
HEADSET	ZS44-28.6 - T2 / ZS56/40 - B8
BEARINGS REQUIRED	2X NP-5 (6902 2RS), 4X NP-7 (6800 2RS), 4X NP-106 (6901 2RS)
SEATPOST	31.6MM (INTERNAL ROUTING FOR DROPPER SEATPOST)
SEAT CLAMP	34.9 MM
BB	THREADED 73MM BSA
REAR HUB	BOOST 148X12MM
REAR AXLE	SRAM MAXLE STEALTH M12X1.75 180MM
CHAIN GUIDE	ISCG05
BRAKE MOUNT	180MM DIRECT POST
PROTECTION	3D CONTOURED RUBBER FRAME PROTECTION FOR DT/SS/CS

### REACTOR 290 ALLOY

MATERIAL	HYDROFORMED 6061 TRIPLE-BUTTED ALUMINIUM
FORK TRAVEL	140MM (RS 150MM)
AXLE TO CROWN	554MM (RS 564MM)
AXLE TO CROWN	51MM
SHOCK TRAVEL	130MM
WHEELS SIZE	29"
MAX TYRE SIZE	2.6"
SHOCK SIZE	210X50MM
SHOCK HARDWARE F	25X8MM
SHOCK HARDWARE R	30X8MM
SIZING	M/L/XL
HEADTUBE	44-56MM TAPERED SEMI-INTEGRATED
HEADSET	ZS44-28.6 - T2 / ZS56/40 - B8
BEARINGS REQUIRED	2X NP-5 (6902 2RS), 4X NP-7 (6800 2RS), 4X NP-106 (6901 2RS)
SEATPOST	31.6MM (INTERNAL ROUTING FOR DROPPER SEATPOST)
SEAT CLAMP	34.9MM
BB	THREADED 73MM BSA
REAR HUB	BOOST 148X12MM
REAR AXLE	SRAM MAXLE STEALTH M12X1.75 180MM
CHAIN GUIDE	ISCG05
BRAKE MOUNT	180MM DIRECT POST
PROTECTION	3D CONTOURED RUBBER FRAME PROTECTION FOR DT/SS/CS

- SHOCK BOLT KIT
- BEARING KIT
- UPPER SWINGLINK KIT
- LOWER SWINGLINK KIT
- MAIN PIVOT KIT
- HORST LINK KIT
- BRAKE MOUNT KIT
- CABLE GUIDES KITS
- FRAME PROTECTION KITS
- HANGER KIT



ITEM #	NUKEPROOF NUMBER	DESCRIPTION	QTY
1	NP-106	6901-2RS (B8)	4
2	NP-107	SWING LINK PIVOT AXLE	1
3	NP108	SWING LINK PIVOT SPACER	2
4	NP-109	SWING LINK PIVOT BOLT	2
5	NP-110	SWING LINK LOCK RING	2
6	NP-111	LOWER LINKAGE WASHER	2
7	NP-112	FLIP CHIP	2
8	NP-113	LOWER LINKAGE BOLT	2
9	NP-114	6902-2RS	2
10	NP-115	MAIN PIVOT BEARING SPACER	1
11	NP-116	MAIN PIVOT WASHER	2
12	NP-117	MAIN PIVOT COLLETT WASHER	1
13	NP-118	MAIN PIVOT BOLT	1
14	NP-119	6800-2RS	4
15	NP-120	HORST LINK PIVOT LOCK RING	4
16	NP-121	HORST LINK PIVOT WASHER	4
17	NP-122	HORST LINK PIVOT AXLE	2
18	NP-123	HORST LINK PIVOT BOLT SPACER	2
19	NP-124	HORST LINK PIVOT BOLT	2
20	NP-125	REACTOR GEAR HANGER	1
21	NP-126	REACTOR GEAR HANGER NUT	1
22	NP-127	BRAKE ADAPTOR	1
23	NP-128	BRAKE ADAPTOR BOLT	2
24	NP-129	SHOCK BOLT NUT	1
25	NP-130	SHOCK BOLT	2
26	NP-131	CABLE EXIT CLAMP	1
27	NP-132	INTERNAL CABLE EXIT CLAMP	1
28	NP-133	INTERNAL SHOCK CABLE EXIT GUIDE	1
29	NP-134	INTERNAL CABLE ENTRY GUIDE	2
30	NP-135	PLASTIC CABLE GUIDE	5
33	NP-138	ALLOY CHAIN STAY PROTECTOR 275	1
37	NP-142	ALLOY DOWN TUBE PROTECTOR	1

## 275/290//CARBON - EXPLODED DIAGRAM

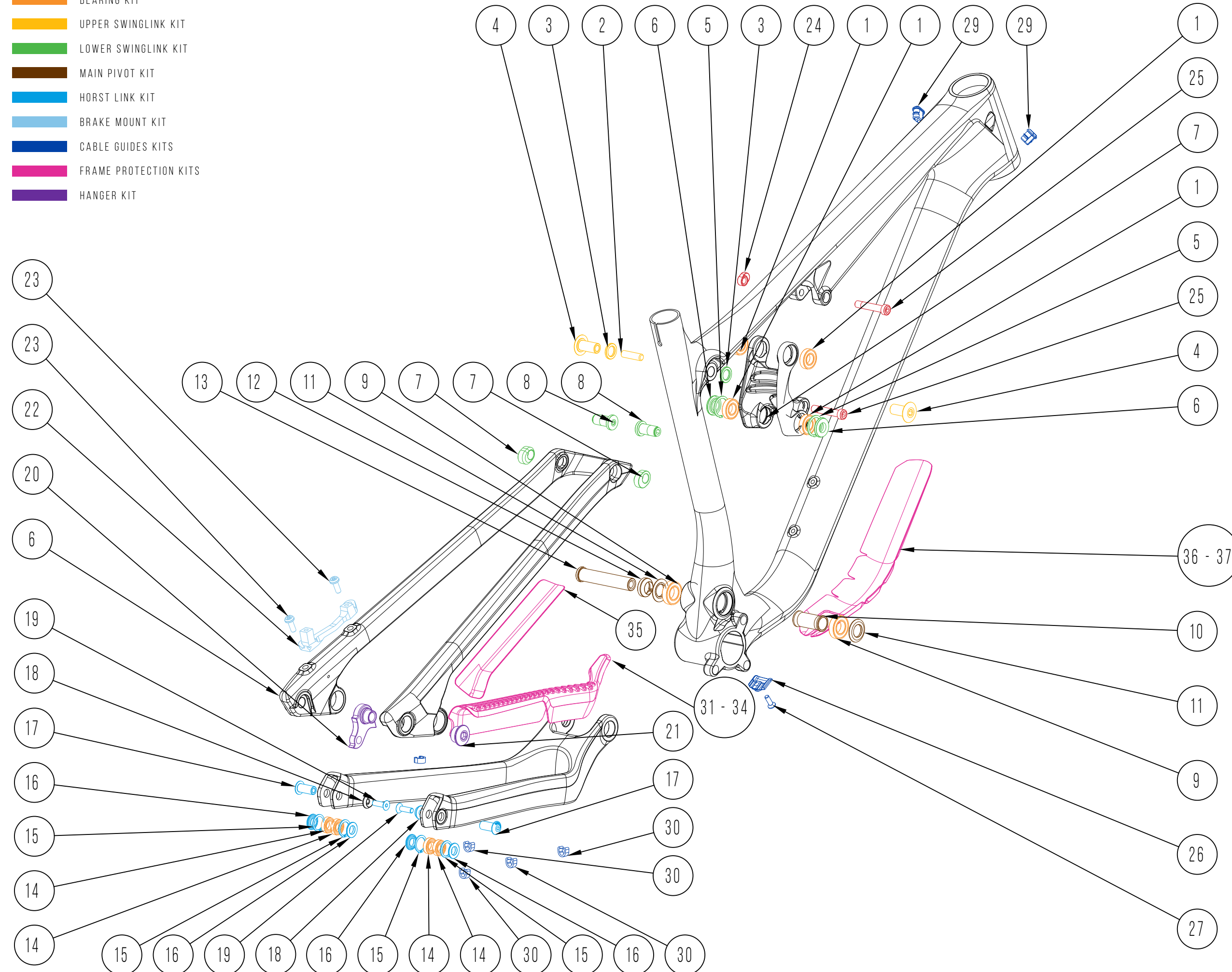
### REACTOR 275 CARBON

MATERIAL	ULTRA STRONG T700/800 MONOCOQUE CARBON FIBRE
FORK TRAVEL	150MM (RS 160MM)
AXLE TO CROWN	545MM (RS 555MM)
AXLE TO CROWN	46MM
SHOCK TRAVEL	140MM
WHEELS SIZE	27.5"
MAX TYRE SIZE	2.6"
SHOCK SIZE	210X55MM
SHOCK HARDWARE F	25X8MM
SHOCK HARDWARE R	30X8MM
SIZING	S/M/L/XL
HEADTUBE	44-56MM TAPERED SEMI-INTEGRATED
HEADSET	ZS44-28.6 - T2 / ZS56/40 - B8
BEARINGS REQUIRED	2X NP-5 (6902 2RS), 4X NP-7 (6800 2RS), 4X NP-106 (6901 2RS)
SEATPOST	31.6MM (INTERNAL ROUTING FOR DROPPER SEATPOST)
SEAT CLAMP	36.4MM
BB	THREADED 73MM BSA
REAR HUB	BOOST 148X12MM
REAR AXLE	SRAM MAXLE STEALTH M12X1.75 180MM
CHAIN GUIDE	ISCG05
BRAKE MOUNT	180MM DIRECT POST
PROTECTION	3D CONTOURED RUBBER FRAME PROTECTION FOR DT/SS/CS

### REACTOR 290 CARBON

MATERIAL	ULTRA STRONG T700/800 MONOCOQUE CARBON FIBRE
FORK TRAVEL	140MM (RS 150MM)
AXLE TO CROWN	554MM (RS 564MM)
AXLE TO CROWN	51MM
SHOCK TRAVEL	130MM
WHEELS SIZE	29"
MAX TYRE SIZE	2.6"
SHOCK SIZE	210X50MM
SHOCK HARDWARE F	25X8MM
SHOCK HARDWARE R	30X8MM
SIZING	M/L/XL
HEADTUBE	44-56MM TAPERED SEMI-INTEGRATED
HEADSET	ZS44-28.6 - T2 / ZS56/40 - B8
BEARINGS REQUIRED	2X NP-5 (6902 2RS), 4X NP-7 (6800 2RS), 4X NP-106 (6901 2RS)
SEATPOST	31.6MM (INTERNAL ROUTING FOR DROPPER SEATPOST)
SEAT CLAMP	36.4MM
BB	THREADED 73MM BSA
REAR HUB	BOOST 148X12MM
REAR AXLE	SRAM MAXLE STEALTH M12X1.75 180MM
CHAIN GUIDE	ISCG05
BRAKE MOUNT	180MM DIRECT POST
PROTECTION	3D CONTOURED RUBBER FRAME PROTECTION FOR DT/SS/CS

- SHOCK BOLT KIT
- BEARING KIT
- UPPER SWINGLINK KIT
- LOWER SWINGLINK KIT
- MAIN PIVOT KIT
- HORST LINK KIT
- BRAKE MOUNT KIT
- CABLE GUIDES KITS
- FRAME PROTECTION KITS
- HANGER KIT

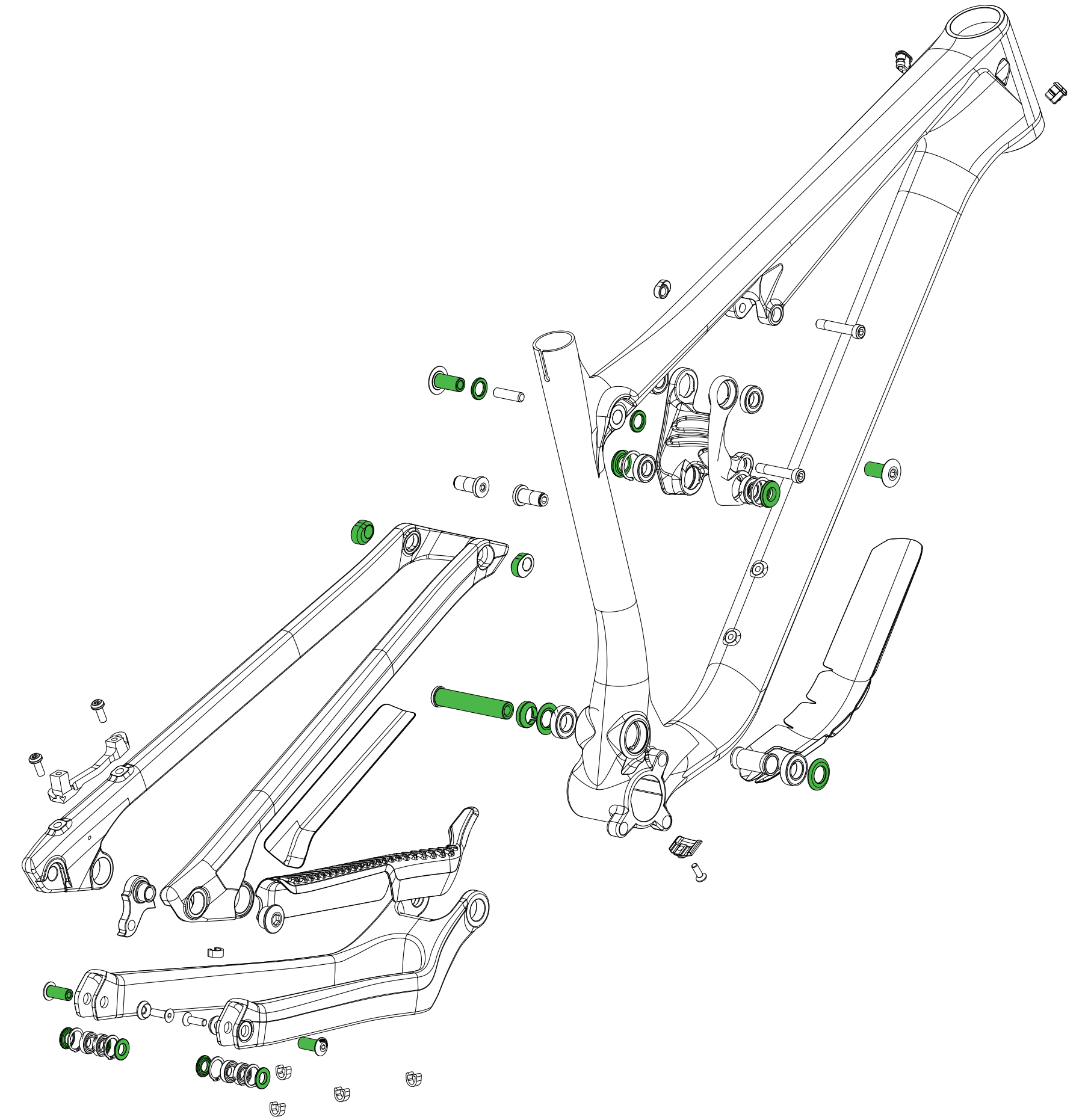
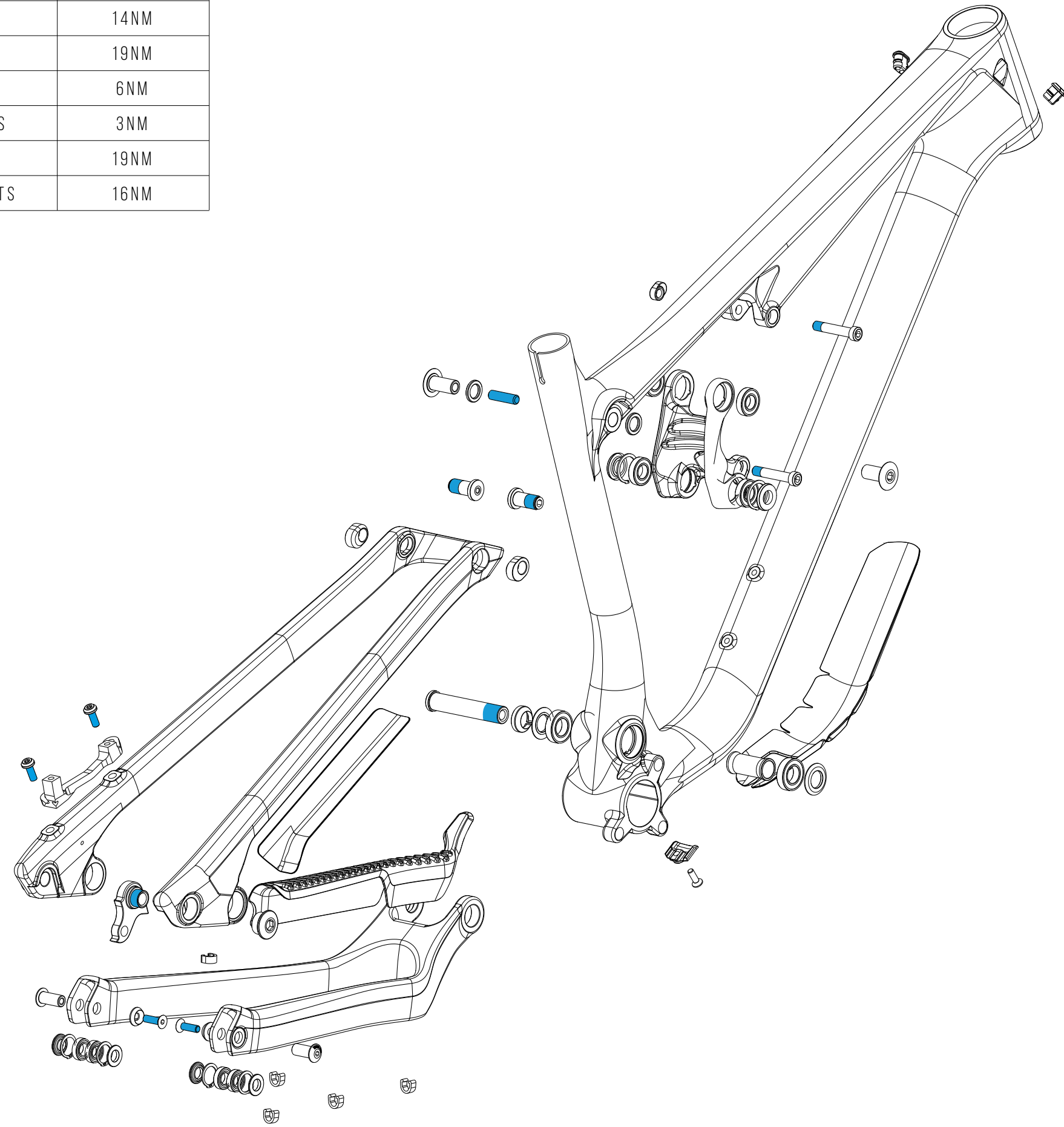


ITEM #	NUKEPROOF NUMBER	DESCRIPTION	QTY
1	NP-106	6901-2RS (B8)	4
2	NP-107	SWING LINK PIVOT AXLE	1
3	NP108	SWING LINK PIVOT SPACER	2
4	NP-109	SWING LINK PIVOT BOLT	2
5	NP-110	SWING LINK LOCK RING	2
6	NP-111	LOWER LINKAGE WASHER	2
7	NP-112	FLIP CHIP	2
8	NP-113	LOWER LINKAGE BOLT	2
9	NP-114	6902-2RS	2
10	NP-115	MAIN PIVOT BEARING SPACER	1
11	NP-116	MAIN PIVOT WASHER	2
12	NP-117	MAIN PIVOT COLLETT WASHER	1
13	NP-118	MAIN PIVOT BOLT	1
14	NP-119	6800-2RS	4
15	NP-120	HORST LINK PIVOT LOCK RING	4
16	NP-121	HORST LINK PIVOT WASHER	4
17	NP-122	HORST LINK PIVOT AXLE	2
18	NP-123	HORST LINK PIVOT BOLT SPACER	2
19	NP-124	HORST LINK PIVOT BOLT	2
20	NP-125	REACTOR GEAR HANGER	1
21	NP-126	REACTOR GEAR HANGER NUT	1
22	NP-127	BRAKE ADAPTOR	1
23	NP-128	BRAKE ADAPTOR BOLT	2
24	NP-129	SHOCK BOLT NUT	1
25	NP-130	SHOCK BOLT	2
26	NP-131	CABLE EXIT CLAMP	1
27	NP-132	INTERNAL CABLE EXIT CLAMP	1
28	NP-133	INTERNAL SHOCK CABLE EXIT GUIDE	1
29	NP-134	INTERNAL CABLE ENTRY GUIDE	2
30	NP-135	PLASTIC CABLE GUIDE	5
31	NP-136	CARBON REACTOR CS PROTECTION	1
32	NP-137	CARBON CHAIN STAY PROTECTOR 290	1
34	NP-139	CARBON SEAT STAY PROTECTOR	1
35	NP-140	CARBON REACTOR SS PROTECTION	1
36	NP-141	CARBON DOWN TUBE PROTECTOR	1

## 275/290//ALLOY/CARBON - TORQUE AND GREASE DIAGRAMS

### RECOMMENDED TORQUE VALUES

PART NUMBER	TORQUE
SHOCK BOLTS	15NM
SWING LINK	14NM
MAIN PIVOT	19NM
HORST LINK	6NM
CABLE GUIDES	3NM
HANGER	19NM
FLIP CHIP BOLTS	16NM



NOTE: USE MEDIUM STRENGTH THREADLOCK  
WE RECOMMEND: LOCTITE 243

THREADLOCK

GREASE