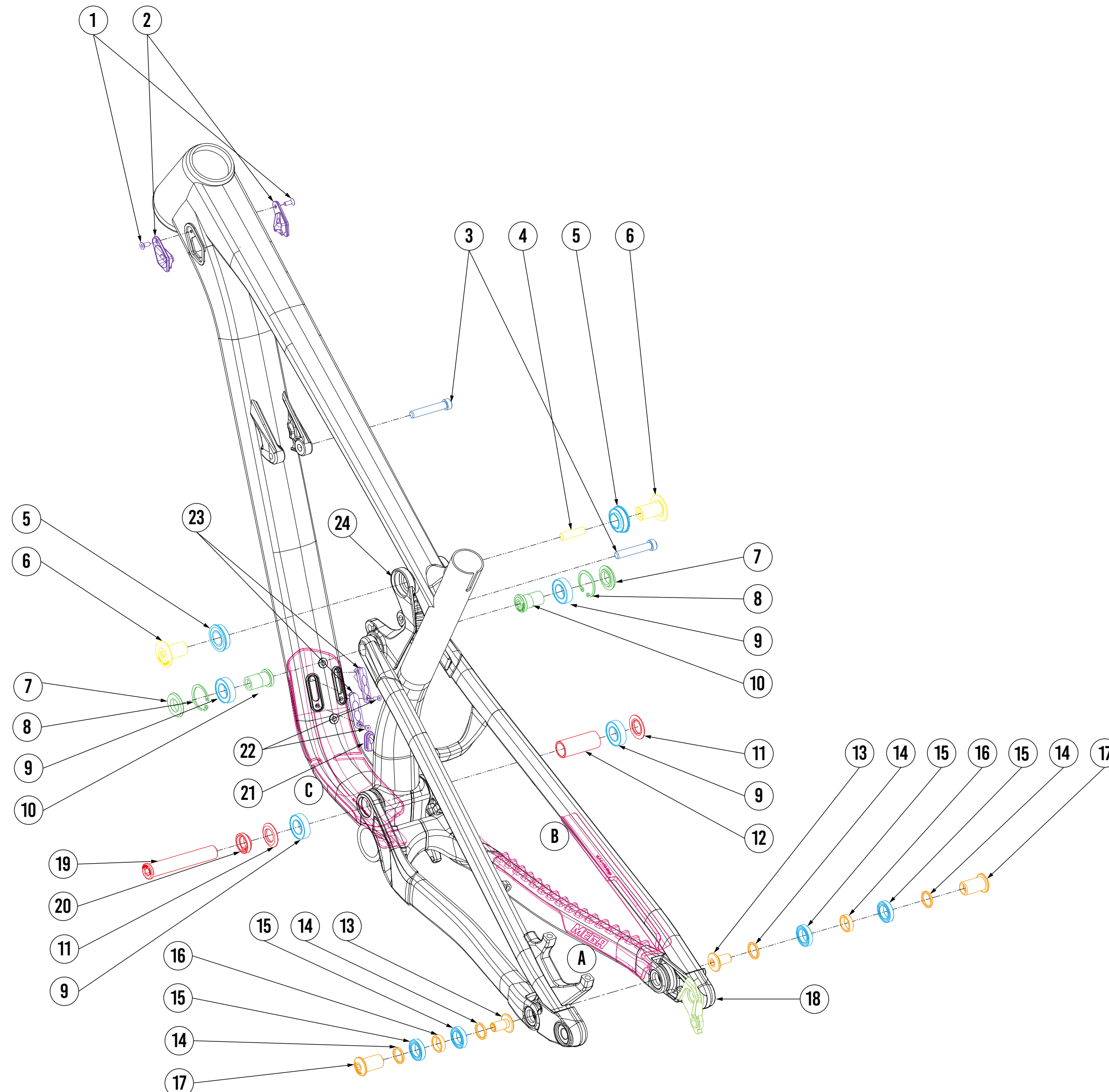


MEGA 275 ALLOY

MATERIAL	HYDROFORMED 6061-T6 TRIPLE-BUTTED ALUMINIUM
FORK TRAVEL	170MM
AXLE TO CROWN	562MM
FORK OFFSET	37MM
REAR TRAVEL	165MM
WHEELS SIZE	27.5"
MAX TYRE SIZE	2.6"
RECOMMENDED SHOCK SAG (MEASURED SEATED):	30%
SHOCK SIZE	230X62.5MM
SHOCK HARDWARE F	25X8MM
SHOCK HARDWARE R	30X8MM
SIZING	S/M/L/XL/XXL
HEADTUBE	44-56MM TAPERED SEMI-INTEGRATED
HEADSET	ZS44-28.6 - T2 / ZS56/40 - B8
BEARINGS REQUIRED	4X F6802 LLU MAX, 4X 6902 LLU MAX, 2X F6902 LLU MAX-EA
SEATPOST	31.6MM (INTERNAL ROUTING FOR DROPPER SEATPOST)
SEAT CLAMP	34.9MM
BB	THREADED 73MM BSA
REAR HUB	BOOST 148X12MM
REAR AXLE	SRAM UDH MAXLE STEALTH M12X1.0 180MM (THREAD LENGTH 13MM)
CHAIN GUIDE	ISC605
BRAKE MOUNT	180MM DIRECT POST
PROTECTION	3D CONTOURED RUBBER FRAME PROTECTION FOR DT/SS/CS

MEGA 290 ALLOY

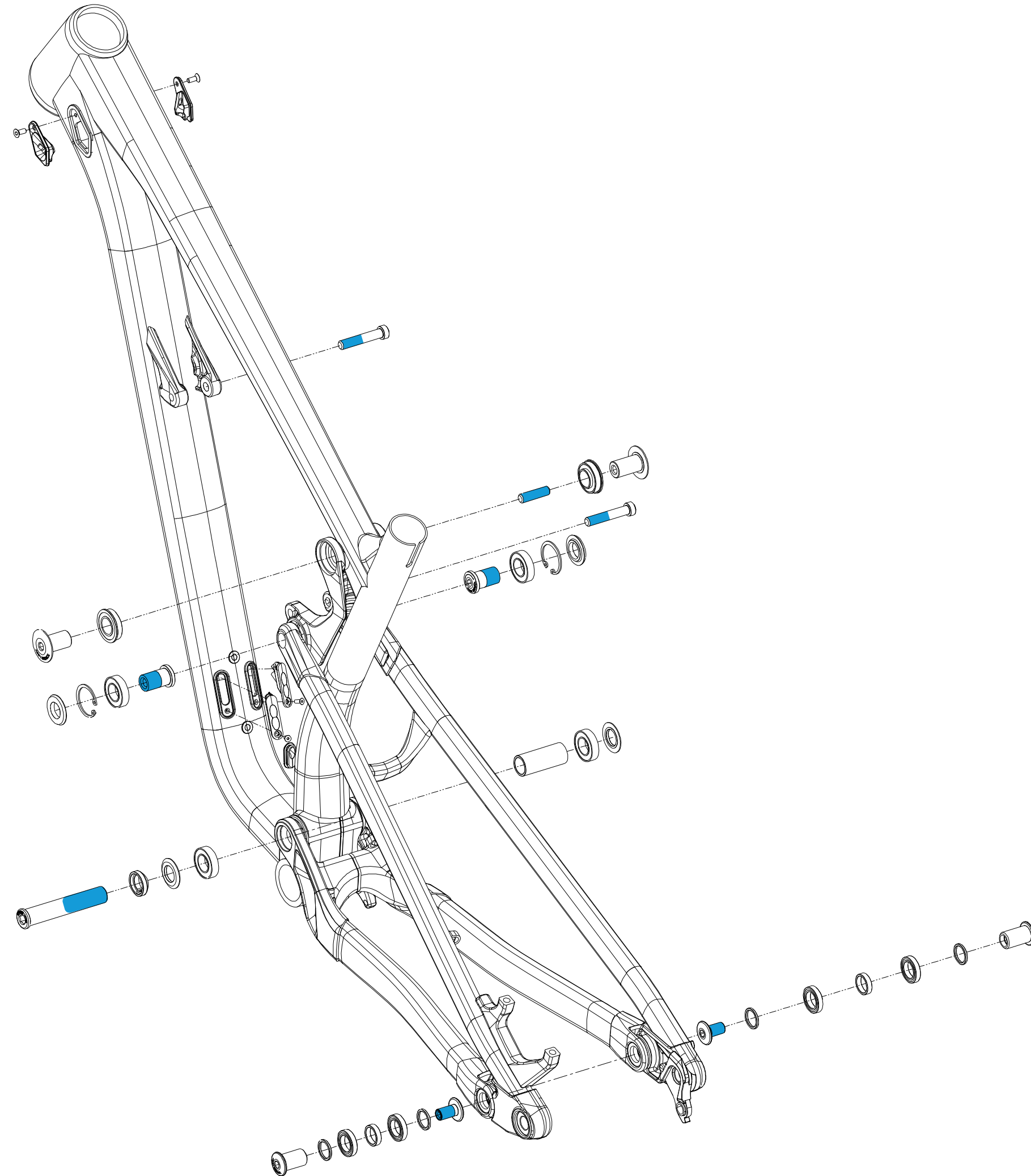
MATERIAL	HYDROFORMED 6061-T6 TRIPLE-BUTTED ALUMINIUM
FORK TRAVEL	170MM
AXLE TO CROWN	582MM
FORK OFFSET	42MM
REAR TRAVEL	160MM
WHEELS SIZE	29"
MAX TYRE SIZE	2.6"
RECOMMENDED SHOCK SAG (MEASURED SEATED):	30%
SHOCK SIZE	230X62.5MM
SHOCK HARDWARE F	25X8MM
SHOCK HARDWARE R	30X8MM
SIZING	S/M/L/XL/XXL
HEADTUBE	44-56MM TAPERED SEMI-INTEGRATED
HEADSET	ZS44-28.6 - T2 / ZS56/40 - B8
BEARINGS REQUIRED	4X F6802 LLU MAX, 4X 6902 LLU MAX, 2X F6902 LLU MAX-EA
SEATPOST	31.6MM (INTERNAL ROUTING FOR DROPPER SEATPOST)
SEAT CLAMP	36.4MM
BB	THREADED 73MM BSA
REAR HUB	BOOST 148X12MM
REAR AXLE	SRAM UDH MAXLE STEALTH M12X1.0 180MM (THREAD LENGTH 13MM)
CHAIN GUIDE	ISC605
BRAKE MOUNT	180MM DIRECT POST
PROTECTION	3D CONTOURED RUBBER FRAME PROTECTION FOR DT/SS/CS



	SHOCK BOLT KIT
	BEARING KIT
	HORST LINK KIT
	MAIN PIVOT LINK
	UPPER SWING LINK KIT
	LOWER SWING LINK KIT
	CABLE GUIDE KIT
	RUBBER FRAME PROTECTION KIT
	HANGER KIT

REFERENCE #	PART #	NUKEPROOF PART #	QTY
1	M4X10L-M11B	FRONT CABLE PORT BOLT	2
2	C7B-CGA	FRONT CABLE PORT	2
3	N6C-M8-43.5L	SHOCK BOLT	2
4	TB-M8-30L	SWING LINK PIVOT AXLE	1
5	F6902 LLU MAX-EA	UPPER SWING LINK BEARING (ENDURO)	2
6	N6E-SLA	SWING LINK BOLT	2
7	N6E-SWS	SEAT STAY CLEVIS WASHER	2
8	R28	SEAT STAY CLEVIS LOCK RING	2
9	BB 6902 LLU MAX	SEAT STAY CLEVIS/ MAIN PIVOT BEARING (ENDURO)	4
10	N6E-SLB	SEAT STAY CLEVIS BOLT	2
11	NTR-BWS	MAIN PIVOT WASHER	2
12	NTR-BSP R2	MAIN PIVOT BEARING SPACER	1
13	N6E-HLB	HORST LINK BOLT	2
14	ASEE-LWS	HORST LINK WASHER	4
15	BB 6802 LLU MAX	HORST LINK BEARING (ENDURO)	4
16	VTEA-LWS-19X15X15	HORST LINK BEARING SPACER	2
17	N6E-HLA	HORST LINK PIVOT AXLE	2
18	-	SRAM UDH HANGER KIT	1
19	VTEA-LBT-83.5	MAIN PIVOT AXLE	1
20	AFDC-CWS	MAIN PIVOT COLLETT WASHER	1
21	TCBC-CGR-1	DROPPER CABLE GUIDE	1
22	M3X8L-M11A	CABLE GUIDE BOLT	2
23	AS-CBG-1	LOWER CABLE GUIDE	2
24	N6E-LK-R1	SWING LINK	1
A	VLF-C-1114	CHAIN STAY PROTECTOR 275	1
A	VLF-C-1135	CHAIN STAY PROTECTOR 290	1
B	VLF-C-1115	SEAT STAY PROTECTOR	1
C	VLF-C-1125	DOWN TUBE PROTECTOR	1

275/290//ALLOY - TORQUE AND GREASE DIAGRAMS

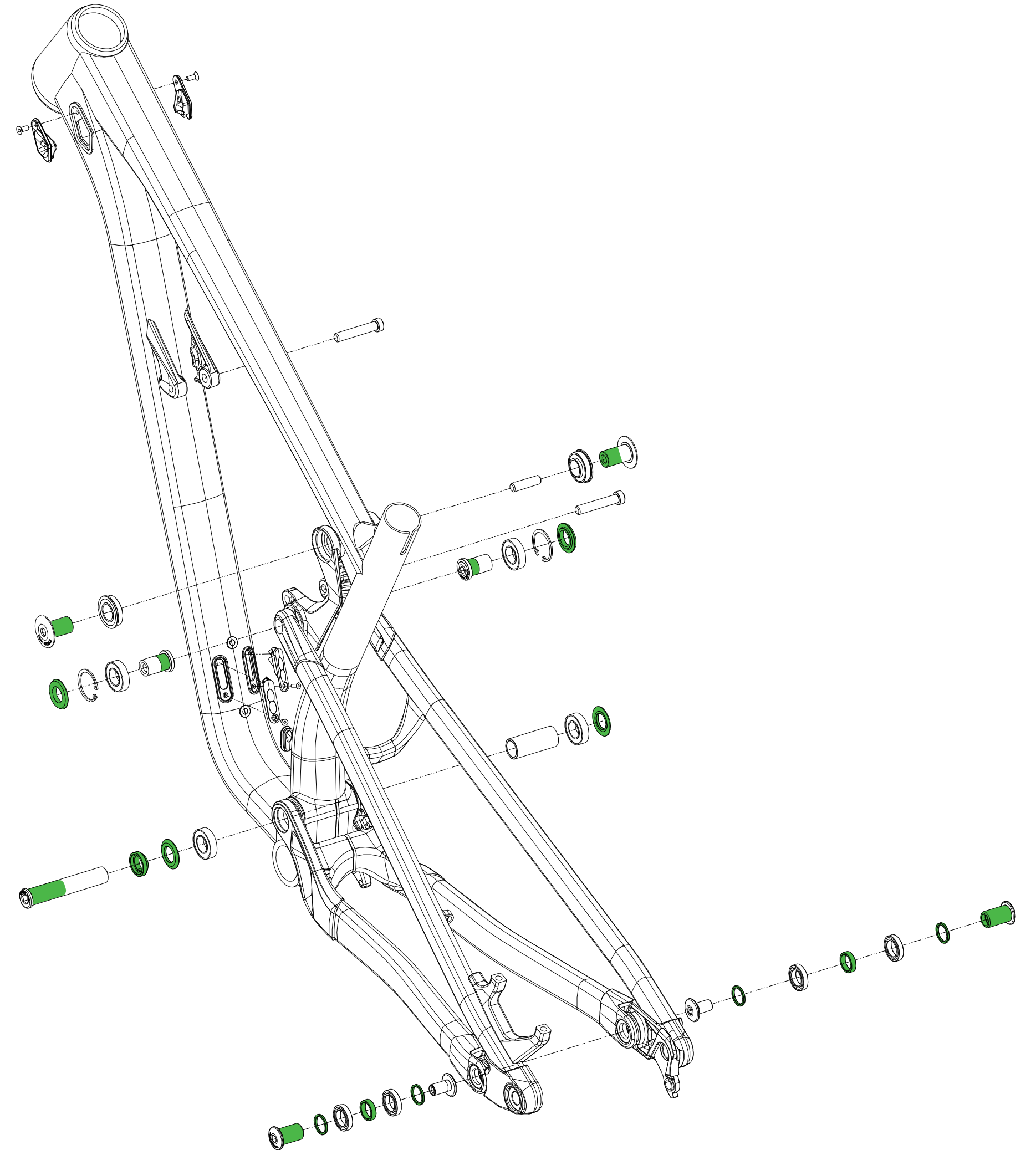


RECOMMENDED TORQUE VALUES

PART NUMBER	TORQUE
SHOCK BOLTS	15NM
UPPER SWING LINK	14NM
LOWER SWING LINK	19NM
MAIN PIVOT	19NM
HORST LINK BOLTS	12NM
CABLE GUIDES	3NM
UDH HANGER	25NM
UDH HANGER BOLT	3NM

NOTE: USE MEDIUM STRENGTH THREADLOCK
WE RECOMMEND: LOCTITE 243

■ THREADLOCK



■ GREASE