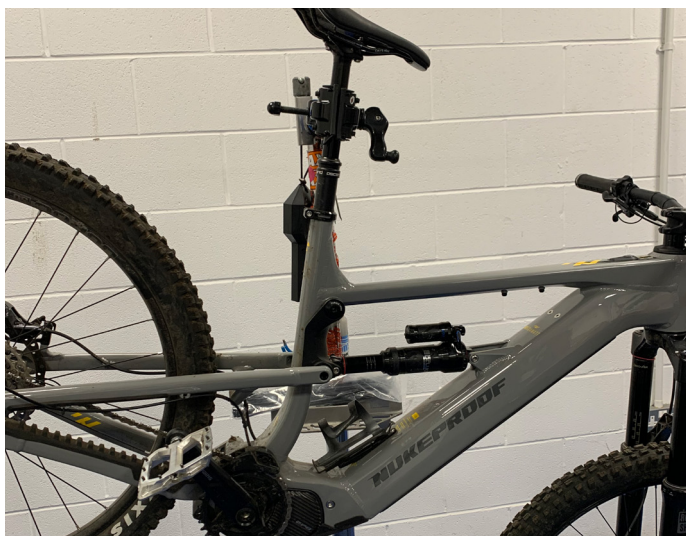


HOW TO REPLACE THE INTERNAL ROUTED CABLE HEADSET IN YOUR NUKEPROOF MEGAWATT

This guide explains how to replace the entire headset on your Nukeproof Megawatt. Some specialist tools are required like crown race removal tool, headset press & bleed kits. You will also potentially need some brake spares like olives / inserts and new gear cables. The full list of tools & parts needed will vary depending on your exact setup so carefully read this guide before starting to ensure you have everything required and are comfortable completing the work.

We will show the key steps to replace your headset, but some steps may vary depending on the parts you have fitted. Always follow the relevant manufacturer's instructions for any 3rd party components.

STRIP DOWN



1. Get bike onto a work stand ready to strip



2. Remove battery door top bolt



3. Loosen battery door bottom bolts 2 full turns



4. Remove battery by carefully turning release clockwise with a hex key, it will drop forwards onto a secondary clip



5. Push secondary clip down to fully remove battery



6. Remove front wheel from bike following fork manufacturer's instructions



7. Disconnect di2 cables from screen using Shimano TL-EW300 tool



8. Move brake lever on the brake which has the hose routed via the headset to a flat position on the handlebars



9. Disconnect brake hose (on brake which has hose routed via headset)



10. Cut old olive / insert and remove nut / rubber protector from brake hose



11. Disconnect dropper cable / hose following manufacturers instructions



12. Spin cranks and shift chain to smallest sprocket



13. Undo gear cable at rear mech



14. Remove cable cover cap on gear shifter



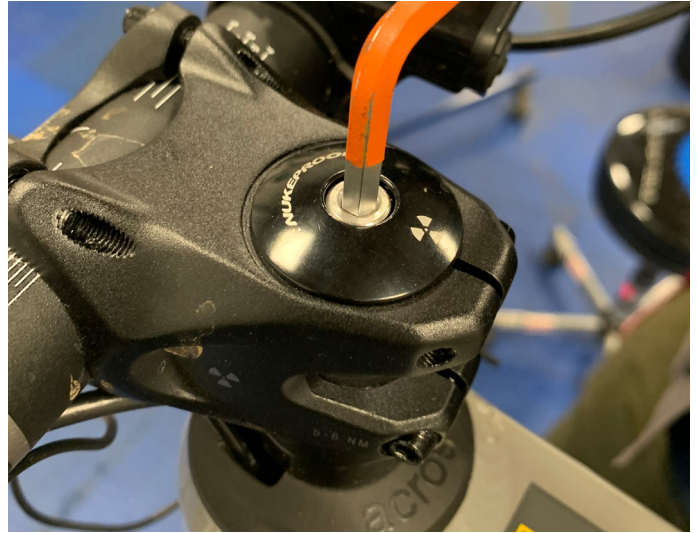
15. Remove cable via shifter



16. Remove brake hose from fork hose guide



17. Remove front brake calliper



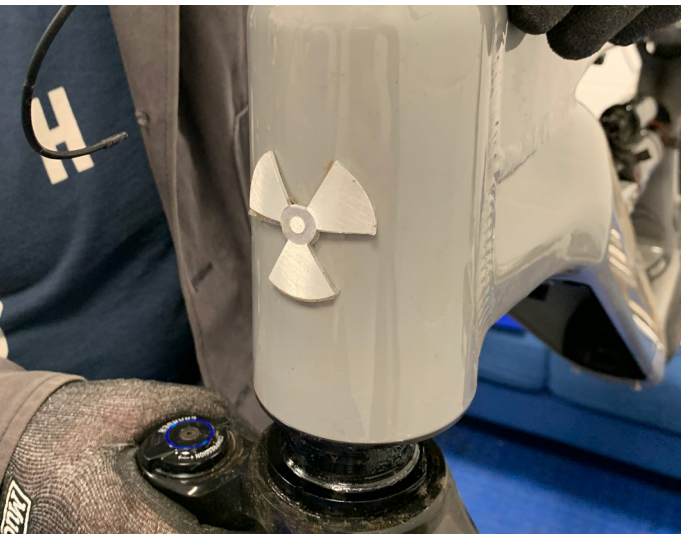
18. Loosen top cap and remove from bike



19. Loosen stem bolts



20. Hold fork by the crown and remove stem / handlebars / spacers - set somewhere safe



21. Remove fork



22. It is very important cables are refitted in the same position they are currently fitted. Note down their position / order and then remove top headset cover



23. Remove compression ring



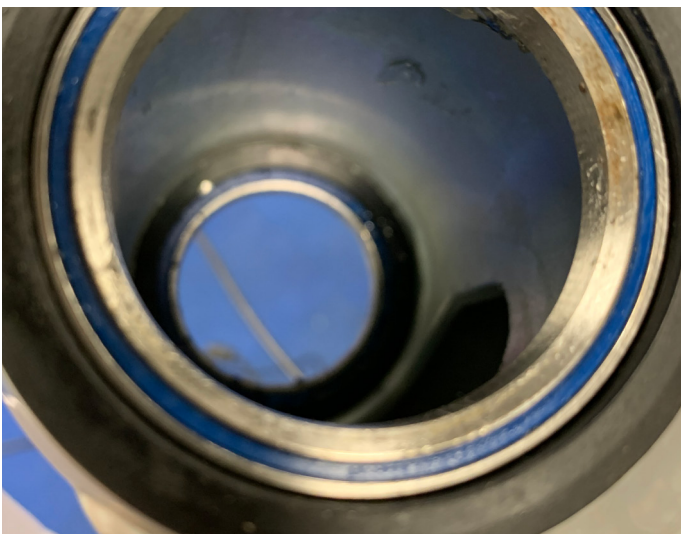
24. Remove 2x bolts of battery mount on outside of downtube



25. Remove mount inside downtube - your cables should now be loose inside the downtube



26. Carefully pull cables / hoses through the headset and out of downtube. Note: One cable will remain which is connected to the power switch on top tube and does not need removed



27. Ensure all cables are out of the headset and there is nothing interfering with the cups



28. Insert headset removal tool for bottom cup



29. Tap tool with hammer to remove cup



30. Insert headtube removal tool for top cup



31. Tap tool with hammer to remove cup



32. Get crown race removal tool and remove crown race from fork



33. Clean any old grease / dirt from headtube and fork.



34. The old headset has now been removed from the frame and you are ready to now start reassembling

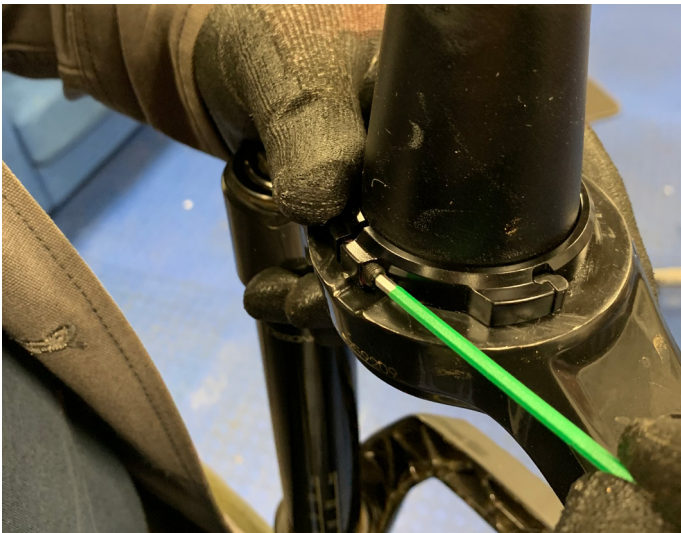
REBUILD



35. Place crown race on fork - bolt hole goes to front



36. Grease crown race bolt



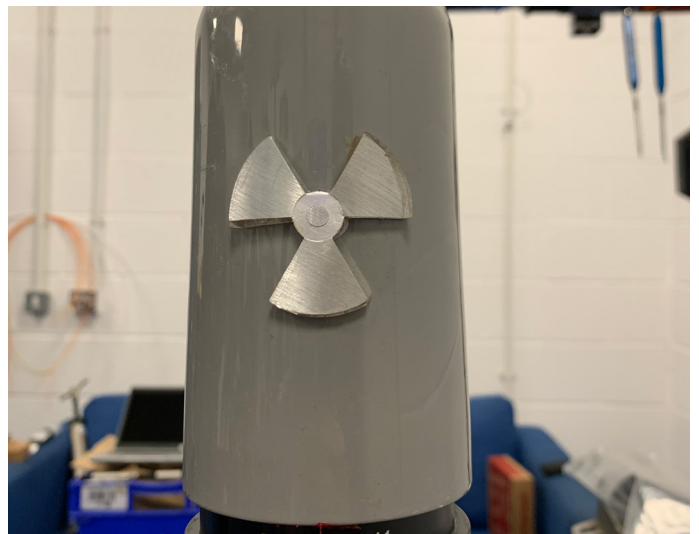
37. Ensure crown race is centered and tighten bolt to secure



38. Apply grease to inside of the top of the headtube



39. Apply grease to inside of the bottom of the headtube



40. Get headset cups and set in place on frame to prep for pressing. Drain hole on the bottom cup goes to the back



41. Insert headset press through the frame and headset



42. Double check cups are aligned and straight



43. Press in cups using headset press



44. Feed cables back through the headset - be careful not to get cables tangled with the power switch cable which was not removed



45. Refit battery mount / cable holder. Push cables into the holder and ensure that cables are not trapped under the mount before tightening the bolts on outside of downtube



46. Grease inside of top headset cup



47. Insert top bearing (ensure chamfered edge on bearing is inside cup). The cables need fed through the centre of the bearing



48. Apply grease to top of bearing



49. Apply grease to inside of bottom headset cup



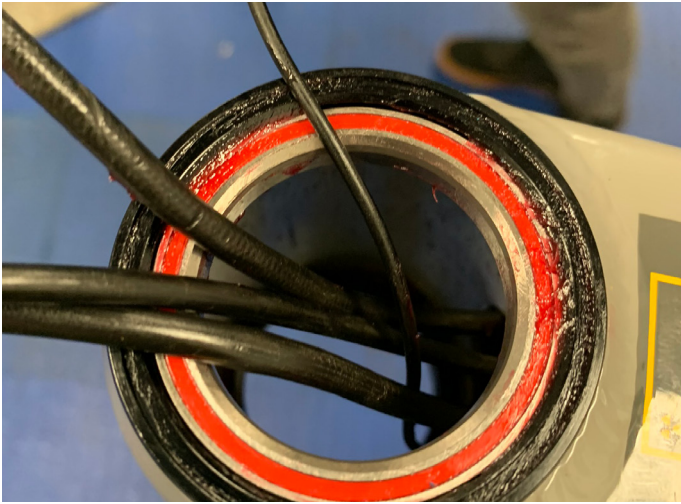
50. Insert bottom bearing (ensure chamfered edge is inside cup)



51. Fit steerer protector on steerer tube if not already fitted



52. Feed cables through top headset cover. Use the same positions which were noted down in step 22



53. Ensure cables are free to move and roughly positioned to either side of headtube to allow fork to be fitted



54. Insert fork into headtube ensuring cables are positioned on either side of the steerer tube



55. Insert compression ring and press into place with cables in correct slots



56. Push top cover into place



57. Refit stem and any headset spacers. There should be approx. 3mm gap between top of steerer tube and top spacer or stem to ensure headset can be adequately tightened. Your new headset may have a different stack height to the one you removed so different sizes of spacers may be needed.



58. Fit top cap and lightly tighten bolt to hold fork in place



59. Refit fork cable hose guide to hose



60. Refit front brake calliper and tighten bolts until calliper holds in place but can still be moved by hand



61. Insert new gear cable via shifter (leave loose at mech)



62. Refit cable cover cap on shifter



63. Reconnect dropper cable / hose - fit new cable if needed



64. Reconnect brake hose by fitting new olive / insert. Follow manufacturers instructions for your specific brake



65. Reconnect di2 wires to screen using Shimano TL-EW300 tool



66. Refit front wheel and torque axle as per manufacturers torque setting



67. Align calliper and tighten to manufacturers torque settings



68. Refit battery



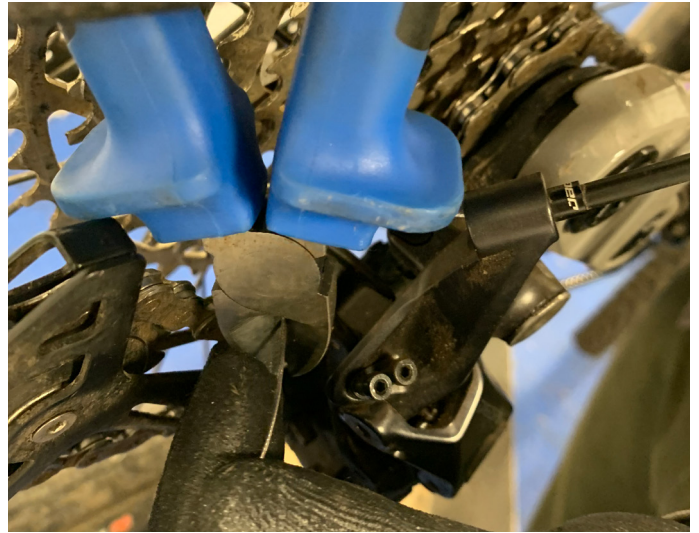
69. Refit battery door and tighten top bolt



70. Tighten bottom battery door bolts



71. Tighten gear cable at rear mech and check and adjust indexing as per manufacturer's instructions



72. Cut excess gear cable & fit ferrule



73. Check brake function and rebleed brake if needed following manufacturer instructions



74. Move brake lever back to riding position



75. Switch on bike and ensure that it powers up and mode switch works as intended



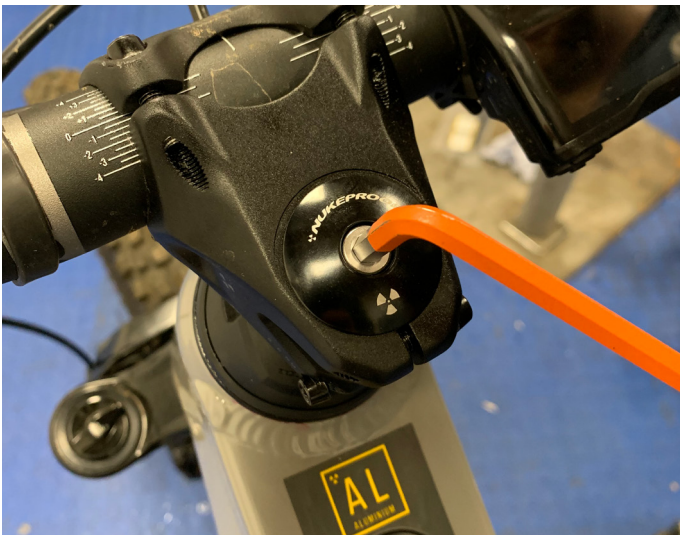
76. Switch off bike



77. Lift bike off work stand



78. Straighten handlebars



79. Tighten top cap bolt until all play has been removed from headset



80. Tighten stem bolts



81. Your bike should now be ready to ride. Take the bike for a short ride and check that everything has been correctly bled, adjusted and tightened. If anything does feel wrong, STOP and refollow the relevant instructions to resolve.