



## HOW TO CONVERT YOUR MEGAWATT TO ACCEPT A DIFFERENT CAPACITY OF BATTERY

Your Megawatt will either come with a 504WH battery or a 630WH battery. This guide will show you how to change the battery mount to go from 504WH to 630WH. The process can be done in reverse if you wish to go from 630WH to 504WH.

### TOOLS REQUIRED

---

- 3mm hex key
- 4mm key hex
- 6mm hex key

### REMOVAL

---



1. Remove the top bolt on your battery door



2. Loosen the two bottom bolts 1 full turn



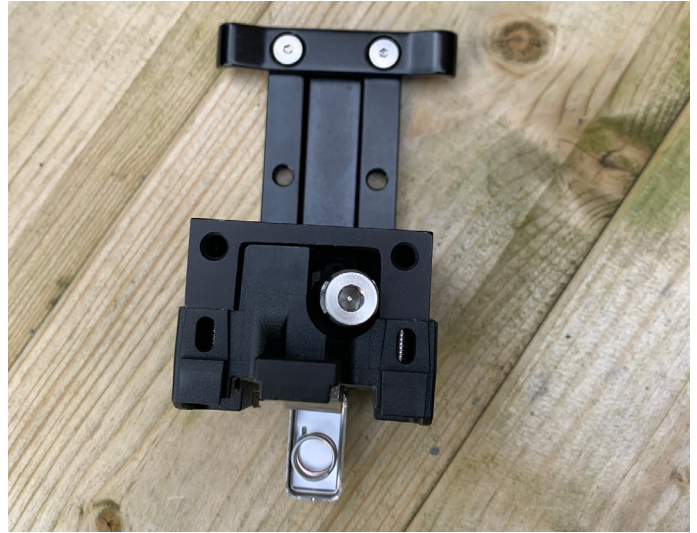
3. Slide battery door upwards to remove



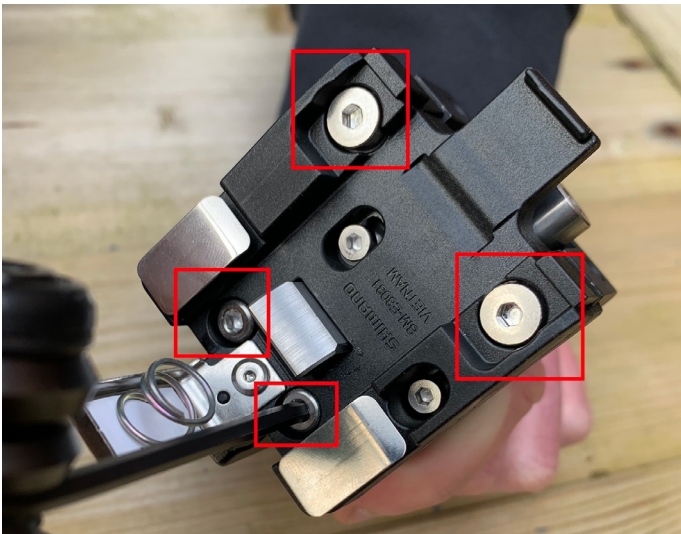
4. Carefully turn the battery release hex clockwise to release the battery. It will slide forward onto a secondary catch which you will need to push down to fully release and remove the battery.



5. Remove the two bolts which hold the battery mount in place at the top of the downtube



6. The battery mount can now be fully removed from the frame



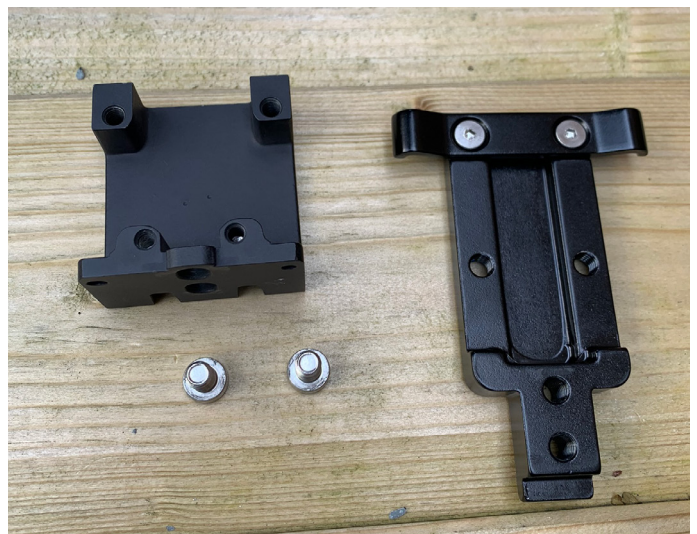
7. Turn the battery mount on its end and undo the 4 bolts highlighted in the photo



8. Remove this part of the bracket and keep bolts safe



9. Undo the two bolts holding the mount to the back plate



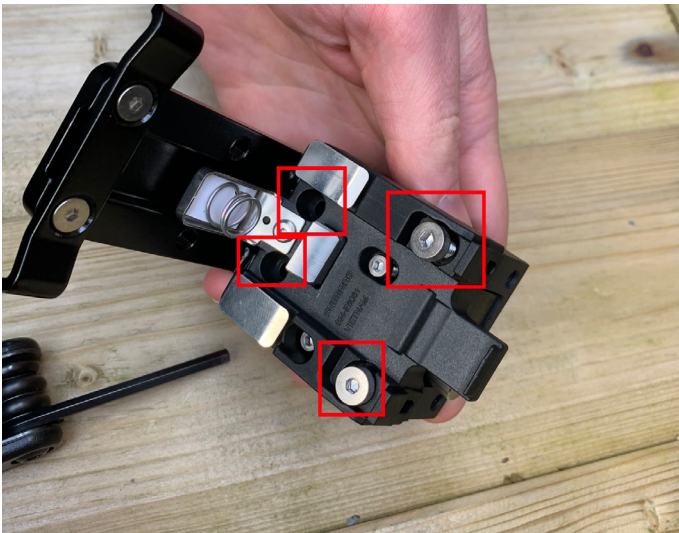
10. The mount can now be removed from the back plate.



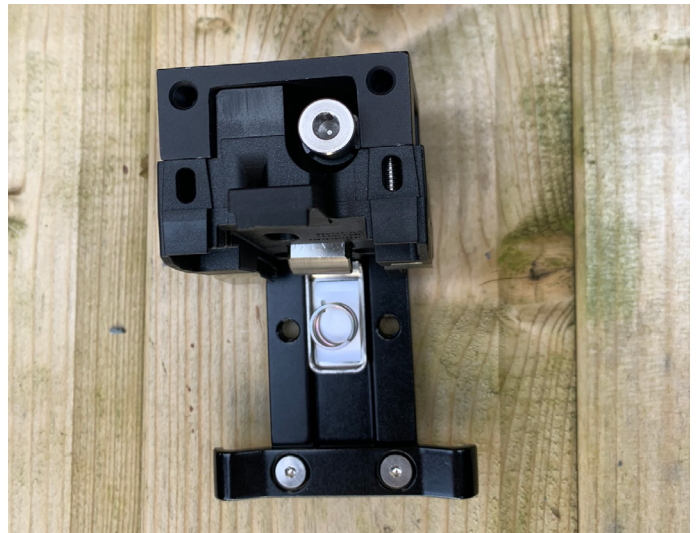
11. Turn the mount 180 degrees and refit on the back plate



12. Put the other half of the mount back in place



13. Refit the 4 bolts to resecure the bracket



14. Your mount should now be fully rebuilt and look like the photo



15. Put the battery mount back into the frame and loosely insert bolts



16. Move cables into correct position and then tighten battery mount bolts – be careful not to pinch any cables as you do this



17. Insert the new battery ensuring that the battery is tight in the mount



18. Refit battery door by sliding over the two bolts and tightening then reinsert the top bolt and tighten