

# GIGA 275/290//CARBON - EXPLODED DIAGRAM

MODEL YEAR: 2021

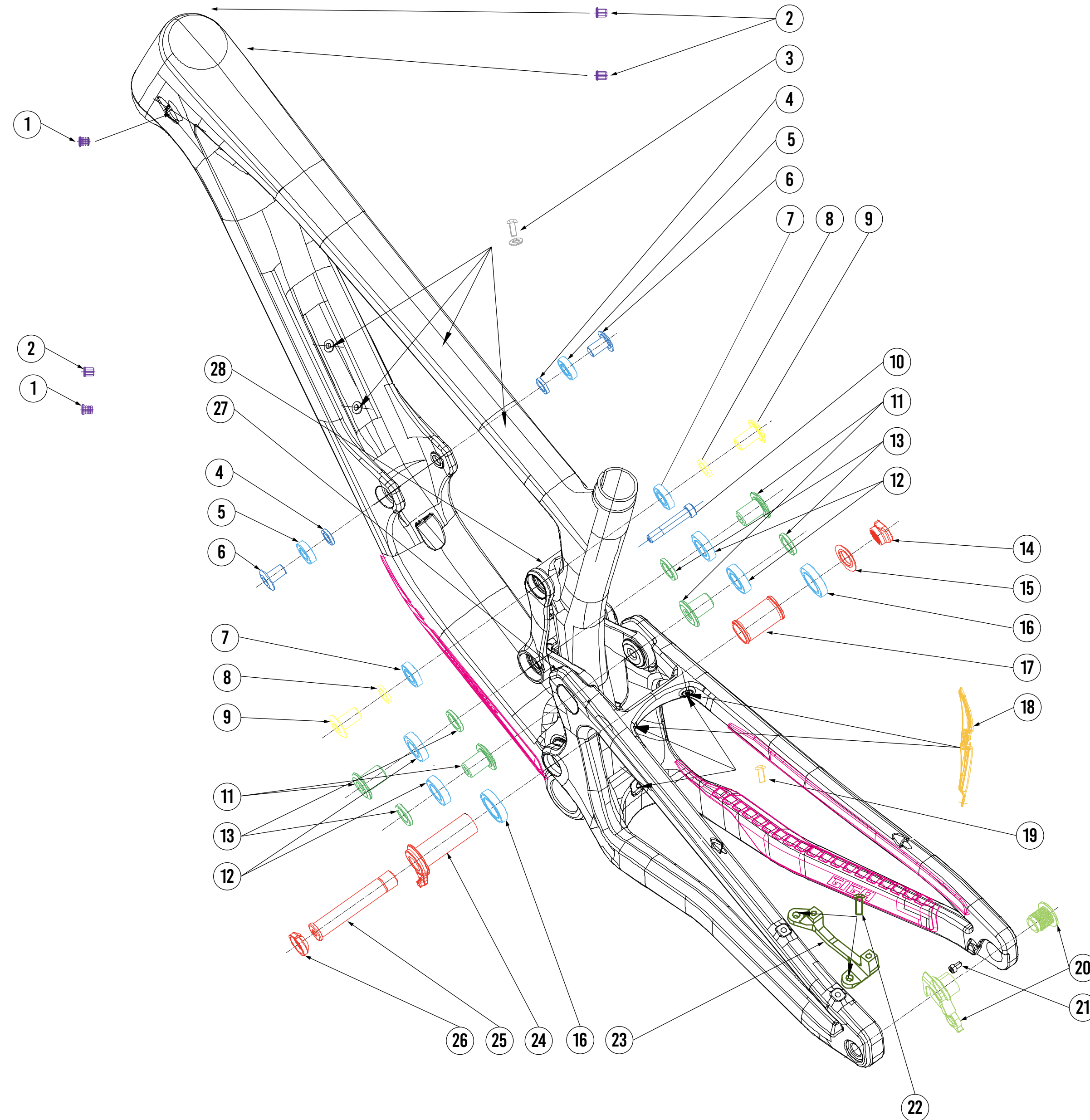


## GIGA 275 CARBON

MATERIAL	ULTRA STRONG T700/800 MONOCOQUE CARBON FIBRE
FORK TRAVEL	180MM
AXLE TO CROWN	572MM
FORK OFFSET	37MM
REAR TRAVEL	180MM
WHEELS SIZE	27.5"
MAX TYRE SIZE	2.6"
RECOMMENDED SHOCK SAG (MEASURED SEATED):	28% (18.2MM)
SHOCK SIZE	205X65MM
SHOCK HARDWARE F	TRUNNION
SHOCK HARDWARE R	30X8MM
SIZING	S/M/L/XL/XXL
HEADTUBE	44-56MM TAPERED SEMI-INTEGRATED
HEADSET	ZS44-28.6 - T2 / ZS56/40 - BB
BEARINGS REQUIRED	2X 6901-2RS MAX, 4X 6902-2RS MAX, 2X6804-2RS MAX, 2X 6900-2RS MAX
SEATPOST	31.6MM (INTERNAL ROUTING FOR DROPPER SEATPOST)
SEAT CLAMP	36.4MM
BB	THREADED 73MM BSA
REAR HUB	BOOST 148X12MM
REAR AXLE	SRAM UDH MAXLE STEALTH M12X1.0 180MM (THREAD LENGTH 13MM)
CHAIN GUIDE	ISC605
BRAKE MOUNT	200MM DIRECT POST
PROTECTION	3D CONTOURED RUBBER FRAME PROTECTION FOR DT/SS/CS

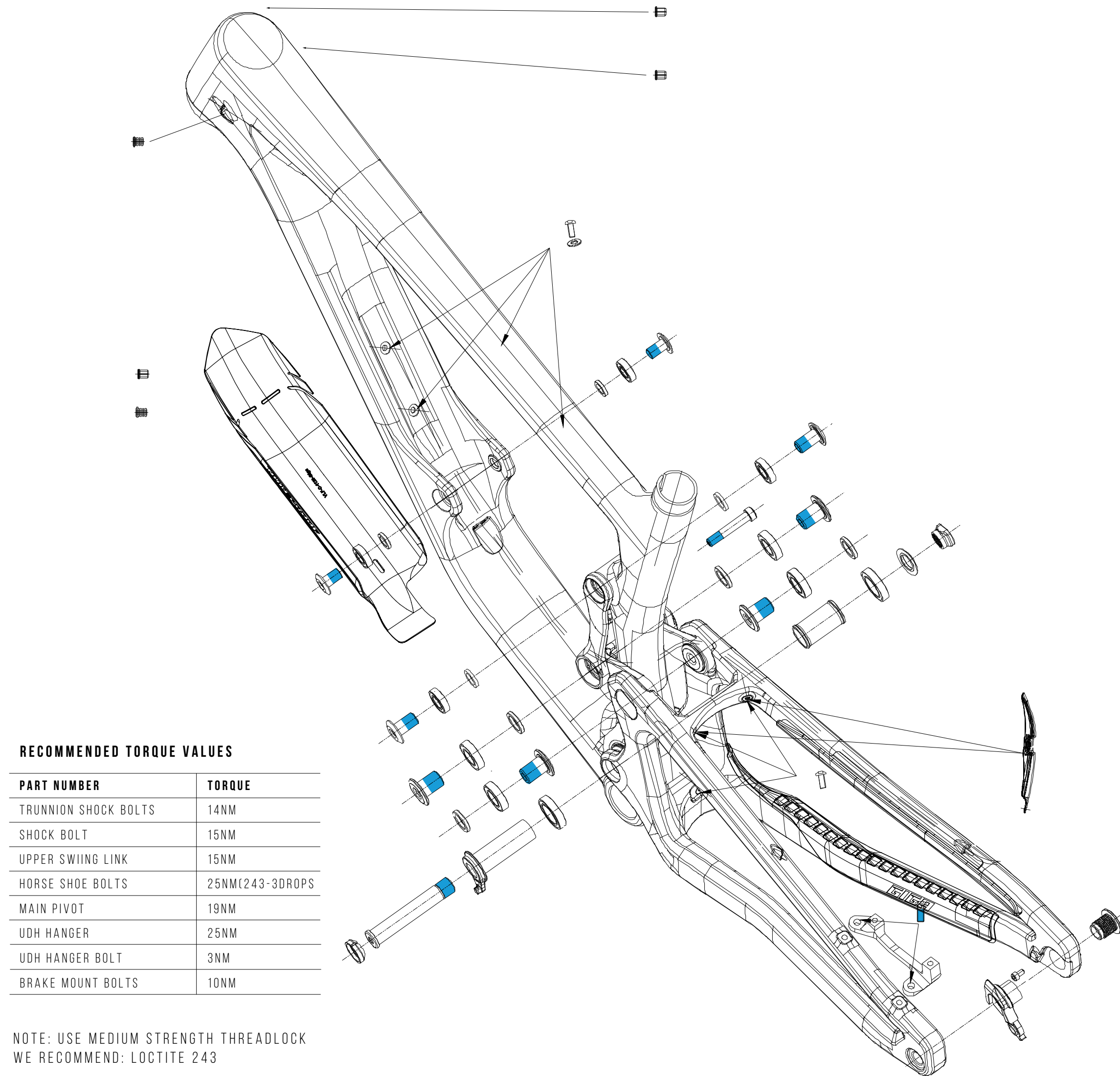
## GIGA 290 CARBON

MATERIAL	ULTRA STRONG T700/800 MONOCOQUE CARBON FIBRE
FORK TRAVEL	180MM
AXLE TO CROWN	591MM
FORK OFFSET	42MM
REAR TRAVEL	170MM
WHEELS SIZE	29"
MAX TYRE SIZE	2.6"
RECOMMENDED SHOCK SAG (MEASURED SEATED):	30% (18MM)
SHOCK SIZE	205X60MM
SHOCK HARDWARE F	TRUNNION
SHOCK HARDWARE R	30X8MM
SIZING	S/M/L/XL/XXL
HEADTUBE	44-56MM TAPERED SEMI-INTEGRATED
HEADSET	ZS44-28.6 - T2 / ZS56/40 - BB
BEARINGS REQUIRED	2X 6901-2RS MAX, 4X 6902-2RS MAX, 2X6804-2RS MAX, 2X 6900-2RS MAX
SEATPOST	31.6MM (INTERNAL ROUTING FOR DROPPER SEATPOST)
SEAT CLAMP	36.4MM
BB	THREADED 73MM BSA
REAR HUB	BOOST 148X12MM
REAR AXLE	SRAM UDH MAXLE STEALTH M12X1.0 180MM (THREAD LENGTH 13MM)
CHAIN GUIDE	ISC605
BRAKE MOUNT	200MM DIRECT POST
PROTECTION	3D CONTOURED RUBBER FRAME PROTECTION FOR DT/SS/CS



	SHOCK BOLT KIT
	BEARING KIT
	MAIN PIVOT LINK
	UPPER SWING LINK KIT
	FRONT/REAR HORSE SHOE KIT
	CABLE GUIDE KIT
	RUBBER FRAME PROTECTION KIT
	HANGER KIT
	DISC BRAKE MOUNT KIT
	MUD GUARD KIT
	WATER BOTTLE BOLT KIT

REFERENCE #	PART #	NUKEPROOF PART #	QTY
1	FB-DA0-138	4MM CABLE GUIDE GROMMET	3
2	FB-DA0-139	5MM CABLE GUIDE GROMMET	3
3	FB-GAN-048	WATER BOTTLE BOLT	4
4	FB-SUP-LK123	TRUNNION MOUNT WASHER	2
5	6900-2RS MAX	TRUNNION BEARING (ENDURO)	2
6	FB-SUP-LK124	TRUNNION MOUNT BOLT	2
7	6901-2RS MAX	SWING LINK BEARING (ENDURO)	2
8	FB-SUP-LK131	SWING LINK WASHER	2
9	FB-SUP-LK130	SWING LINK BOLT	2
10	FB-SUP-LK127	SHOCK BOLT	1
11	FB-SUP-LK133	HORSE SHOE BOLT	4
12	6902-2RS MAX	HORSE SHOE BEARING (ENDURO)	4
13	FB-SUP-LK129	HORSE SHOE WASHER	4
14	FB-SUP-LK136	MAIN PIVOT NUT	1
15	FB-SUP-LK177	MAIN PIVOT WASHER	1
16	6804-2RS MAX	MAIN PIVOT BEARING (ENDURO)	2
17	FB-SUP-LK134	MAIN PIVOT BEARING SPACER	1
18	FB-DA0-131	MUD GUARD	1
19	FB-GAN-048	MUD GUARD BOLT	3
20	-	SRAM UDH HANGER KIT	1
21	FB-GAN-127	UDH STOP BOLT	1
22	FB-GAN-114	BRAKE MOUNT BOLT	2
23	FB-GU0-197	BRAKE MOUNT	1
24	FB-SUP-LK137	MAIN PIVOT FLIP AXLE	1
25	FB-SUP-LK135	MAIN PIVOT AXLE	1
26	FB-SUP-LK122	MAIN PIVOT COLLETT WASHER	1
27	FB-SUP-LK126	GIGA HORSE SHOE LINK	1
28	FB-SUP-LK125	SWING LINK	1
A	VLF-C-1126	CHAIN STAY PROTECTOR 275	1
A	VLF-C-1127	CHAIN STAY PROTECTOR 290	1
B	VLF-C-1128	SEAT STAY PROTECTOR	1
C	VLF-C-1129	DOWN TUBE PROTECTOR	1

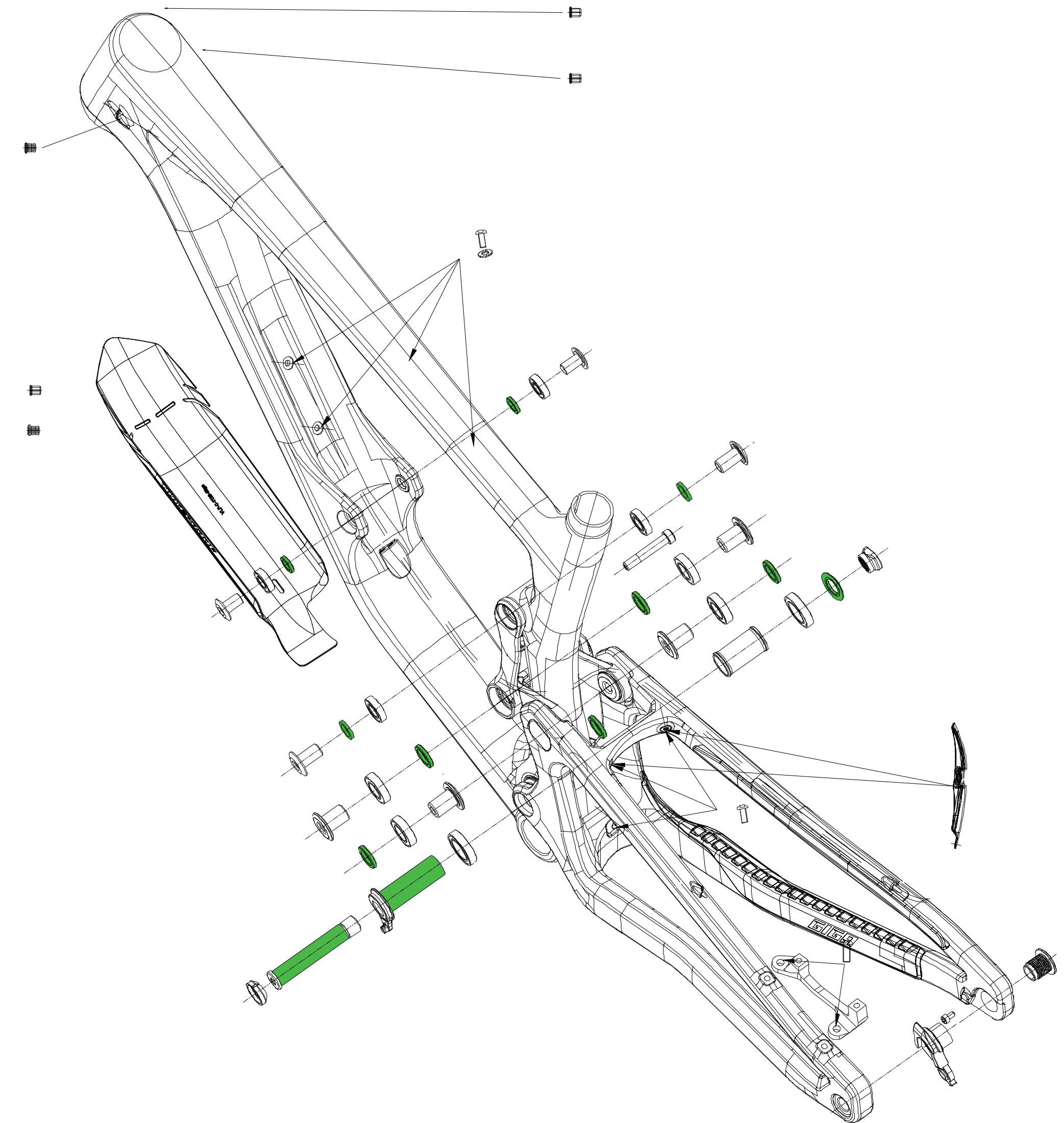


**RECOMMENDED TORQUE VALUES**

PART NUMBER	TORQUE
TRUNNION SHOCK BOLTS	14NM
SHOCK BOLT	15NM
UPPER SWIING LINK	15NM
HORSE SHOE BOLTS	25NM(243-3DROPS)
MAIN PIVOT	19NM
UDH HANGER	25NM
UDH HANGER BOLT	3NM
BRAKE MOUNT BOLTS	10NM

NOTE: USE MEDIUM STRENGTH THREADLOCK  
WE RECOMMEND: LOCTITE 243

■ THREADLOCK



■ GREASE