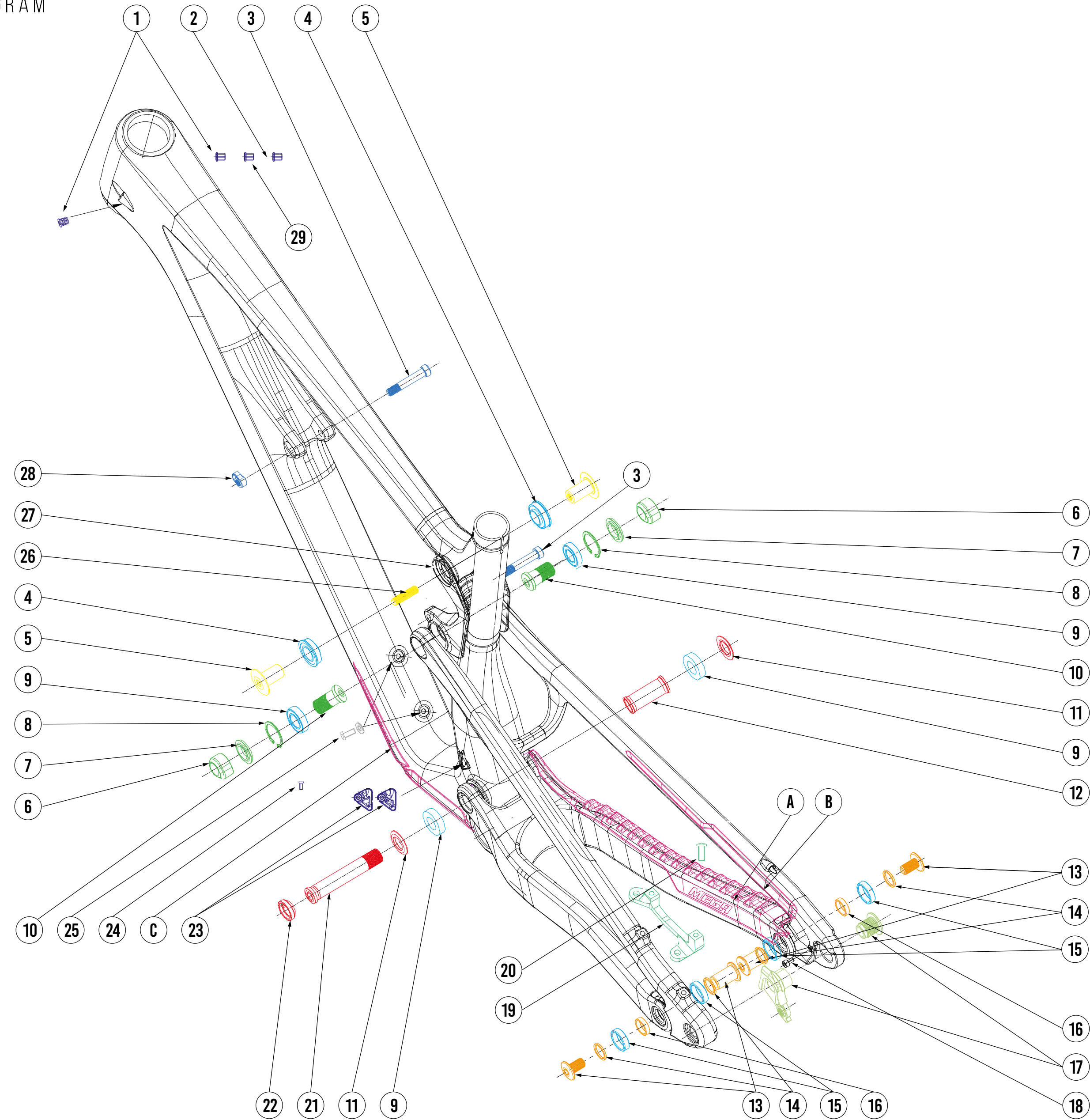


MEGA 275 CARBON

MATERIAL	ULTRA STRONG T700/800 MONOCOQUE CARBON FIBRE
FORK TRAVEL	170MM
AXLE TO CROWN	562MM
FORK OFFSET	37MM
REAR TRAVEL	165MM
WHEELS SIZE	27.5"
MAX TYRE SIZE	2.6"
RECOMMENDED SHOCK SAG (MEASURED SEATED):	30%
SHOCK SIZE	25X8MM
SHOCK HARDWARE F	25X8MM
SHOCK HARDWARE R	30X8MM
SIZING	S/M/L/XL/XXL
HEADTUBE	44-56MM TAPERED SEMI-INTEGRATED
HEADSET	ZS44-28.6 - T2 / ZS56/40 - B8
BEARINGS REQUIRED	4X F6802 LLU MAX, 4X 6902 LLU MAX, 2X F6902 LLU MAX-EA
SEATPOST	31.6MM (INTERNAL ROUTING FOR DROPPER SEATPOST)
SEAT CLAMP	36.4MM
BB	THREADED 73MM BSA
REAR HUB	BOOST 148X12MM
REAR AXLE	SRAM UDH MAXLE STEALTH M12X1.0 180MM (THREAD LENGTH 13MM)
CHAIN GUIDE	ISC605
BRAKE MOUNT	180MM DIRECT POST
PROTECTION	3D CONTOURED RUBBER FRAME PROTECTION FOR DT/SS/CS

MEGA 290 CARBON

MATERIAL	ULTRA STRONG T700/800 MONOCOQUE CARBON FIBRE
FORK TRAVEL	170MM
AXLE TO CROWN	582MM
FORK OFFSET	42MM
REAR TRAVEL	160MM
WHEELS SIZE	29"
MAX TYRE SIZE	2.6"
RECOMMENDED SHOCK SAG (MEASURED SEATED):	30%
SHOCK SIZE	230X62.5MM
SHOCK HARDWARE F	25X8MM
SHOCK HARDWARE R	30X8MM
SIZING	S/M/L/XL/XXL
HEADTUBE	44-56MM TAPERED SEMI-INTEGRATED
HEADSET	ZS44-28.6 - T2 / ZS56/40 - B8
BEARINGS REQUIRED	4X F6802 LLU MAX, 4X 6902 LLU MAX, 2X F6902 LLU MAX-EA
SEATPOST	31.6MM (INTERNAL ROUTING FOR DROPPER SEATPOST)
SEAT CLAMP	36.4MM
BB	THREADED 73MM BSA
REAR HUB	BOOST 148X12MM
REAR AXLE	SRAM UDH MAXLE STEALTH M12X1.0 180MM (THREAD LENGTH 13MM)
CHAIN GUIDE	ISC605
BRAKE MOUNT	180MM DIRECT POST
PROTECTION	3D CONTOURED RUBBER FRAME PROTECTION FOR DT/SS/CS



	SHOCK BOLT KIT
	BEARING KIT
	HORST LINK KIT
	MAIN PIVOT LINK
	UPPER SWING LINK KIT
	LOWER SWING LINK KIT
	CABLE GUIDE KIT
	RUBBER FRAME PROTECTION KIT
	HANGER KIT
	DISC BRAKE MOUNT KIT
	WATER BOTTLE BOLT KIT

REFERENCE #	PART #	NUKEPROOF PART #	QTY
1	FB-DA0-239	4MM CABLE GUIDE GROMMET	2
2	FB-DA0-240	5MM CABLE GUIDE GROMMET	2
3	FB-SUP-LK116	SHOCK BOLT	2
4	F6902 LLU MAX-EA	UPPER SWING LINK BEARING (ENDURO)	2
5	FB-SUP-LK120	SWING LINK BOLT	2
6	FB-SUP-LK117	SEAT STAY CLEVIS NUT	2
7	FB-SUP-LK119	SEAT STAY CLEVIS WASHER	2
8	FB-SUP-B29	SEAT STAY CLEVIS LOCK RING	2
9	BB 6902 LLU MAX	SEAT STAY CLEVIS/MAIN PIVOT BEARING (ENDURO)	4
10	FB-SUP-LK118	SEAT STAY CLEVIS BOLT	2
11	FB-SUP-LK113	MAIN PIVOT WASHER	2
12	FB-SUP-LK111	MAIN PIVOT BEARING SPACER	1
13	FB-SUP-BD23	HORST LINK PIVOT AXLE AND BOLT	2
14	FB-SUP-B73	HORST LINK WASHER	4
15	BB 6802 LLU MAX	HORST LINK BEARING (ENDURO)	4
16	FB-SUP-B72	HORST LINK BEARING SPACER	2
17	-	SRAM UDH HANGER KIT	1
18	FB-GAN-127	UDH STOP BOLT	1
19	FB-GU0-197	BRAKE MOUNT	1
20	FB-GAN-114	BRAKE MOUNT BOLT	2
21	FB-SUP-LK112	MAIN PIVOT AXLE	1
22	FB-SUP-LK122	MAIN PIVOT COLLETT WASHER	1
23	FB-SUP-LK182	SEAT TUBE CABLE PORT	2
24	FB-GAN-063	SEAT TUBE CABLE PORT BOLT	2
25	FB-GAN-048	WATER BOTTLE BOLT KIT	4
26	FB-LU0-072	SWING LINK PIVOT AXLE	1
27	FB-SUP-LK114	SWING LINK	1
28	FB-SUP-LK115	SHOCK BOLT NUT	1
29	FB-DA0-201	5.4MM HAYES CABLE GUIDE GROMMET	2
A	VLF-C-1121	CHAIN STAY PROTECTOR 275	1
A	VLF-C-1122	CHAIN STAY PROTECTOR 290	2
B	VLF-C-1123	SEAT STAY PROTECTOR	2
C	VLF-C-1124	DOWN TUBE PROTECTOR	2

275/290//CARBON - TORQUE AND GREASE DIAGRAMS

RECOMMENDED TORQUE VALUES

PART NUMBER	TORQUE
SHOCK BOLTS	15NM
UPPER SWING LINK	14NM
LOWER SWING LINK	19NM
MAIN PIVOT	19NM
HORST LINK BOLTS	12NM
CABLE GUIDES	3NM
UDH HANGER	25NM
UDH HANGER BOLT	3NM
BRAKE MOUNT BOLTS	10NM

NOTE: USE MEDIUM STRENGTH THREADLOCK
WE RECOMMEND: LOCTITE 243

 THREADLOCK

 GREASE

