

REACTOR

F R A M E
MANUAL

NUKEPROOF

CONGRATULATIONS ON YOUR PURCHASE
AND WELCOME TO THE NUKEPROOF FAMILY!
WE HOPE YOU ENJOY THE RIDE!

#ENJOYRESPONSIBLY

CONTENTS PAGE

03-04 // 275 FRAME INFORMATION

05-06 // 290 FRAME INFORMATION

07-08 // 275 GEOMETRY

09-10 // 290 GEOMETRY

11-12 // PART LIST

13-14 // TORQUE, THREADLOCK AND GREASE DIAGRAMS

15-16 // SEATSTAY FLIP CHIP INSTRUCTIONS

275 ALLOY FRAME INFORMATION

REACTOR

REACTOR 275 ALLOY

MATERIAL	HYDROFORMED 6061 TRIPLE-BUTTED ALUMINIUM
FORK TRAVEL	150MM (RS 160MM)
AXLE TO CROWN	545MM (RS 555MM)
FORK OFFSET	46MM
SHOCK TRAVEL	140MM
WHEELS SIZE	27.5"
MAX TYRE SIZE	2.6"
SHOCK SIZE	210X55MM
SHOCK HARDWARE F	25X8MM
SHOCK HARDWARE R	30X8MM
SIZING	S/M/L/XL
HEADTUBE	44-56MM TAPERED SEMI-INTEGRATED
HEADSET	ZS44-28.6 - T2 / ZS56/40 - B8
BEARINGS REQUIRED	2X NP-5 (6902 2RS), 4X NP-7 (6800 2RS), 4X NP-106 (6901 2RS)
SEATPOST	31.6MM (INTERNAL ROUTING FOR DROPPER SEATPOST)
SEAT CLAMP	34.9MM
BB	THREADED 73MM BSA
REAR HUB	BOOST 148X12MM
REAR AXLE	SRAM MAXLE STEALTH M12X1.75 180MM
CHAIN GUIDE	ISCG05
BRAKE MOUNT	180MM DIRECT POST
PROTECTION	3D CONTOURED RUBBER FRAME PROTECTION FOR DT/SS/CS

275 CARBON FRAME INFORMATION

REACTOR

REACTOR 275 CARBON

MATERIAL	ULTRA STRONG T700/800 MONOCOQUE CARBON FIBRE
FORK TRAVEL	150MM (RS 160MM)
AXLE TO CROWN	545MM (RS 555MM)
FORK OFFSET	46MM
SHOCK TRAVEL	140MM
WHEELS SIZE	27.5"
MAX TYRE SIZE	2.6"
SHOCK SIZE	210X55MM
SHOCK HARDWARE F	25X8MM
SHOCK HARDWARE R	30X8MM
SIZING	S/M/L/XL
HEADTUBE	44-56MM TAPERED SEMI-INTEGRATED
HEADSET	ZS44-28.6 - T2 / ZS56/40 - BB
BEARINGS REQUIRED	2X NP-5 (6902 2RS), 4X NP-7 (6800 2RS), 4X NP-106 (6901 2RS)
SEATPOST	31.6MM (INTERNAL ROUTING FOR DROPPER SEATPOST)
SEAT CLAMP	36.4MM
BB	THREADED 73MM BSA
REAR HUB	BOOST 148X12MM
REAR AXLE	SRAM MAXLE STEALTH M12X1.75 180MM
CHAIN GUIDE	ISCG05
BRAKE MOUNT	180MM DIRECT POST
PROTECTION	3D CONTOURED RUBBER FRAME PROTECTION FOR DT/SS/CS

290 ALLOY FRAME INFORMATION

REACTOR

REACTOR 290 ALLOY

MATERIAL	HYDROFORMED 6061 TRIPLE-BUTTED ALUMINIUM
FORK TRAVEL	140MM (RS 150MM)
AXLE TO CROWN	554MM (RS 564MM)
FORK OFFSET	51MM
SHOCK TRAVEL	130MM
WHEELS SIZE	29"
MAX TYRE SIZE	2.6"
SHOCK SIZE	210X50MM
SHOCK HARDWARE F	25X8MM
SHOCK HARDWARE R	30X8MM
SIZING	M/L/XL
HEADTUBE	44-56MM TAPERED SEMI-INTEGRATED
HEADSET	ZS44-28.6 - T2 / ZS56/40 - B8
BEARINGS REQUIRED	2X NP-5 (6902 2RS), 4X NP-7 (6800 2RS), 4X NP-106 (6901 2RS)
SEATPOST	31.6MM (INTERNAL ROUTING FOR DROPPER SEATPOST)
SEAT CLAMP	34.9MM
BB	THREADED 73MM BSA
REAR HUB	BOOST 148X12MM
REAR AXLE	SRAM MAXLE STEALTH M12X1.75 180MM
CHAIN GUIDE	ISCG05
BRAKE MOUNT	180MM DIRECT POST
PROTECTION	3D CONTOURED RUBBER FRAME PROTECTION FOR DT/SS/CS

290 CARBON FRAME INFORMATION

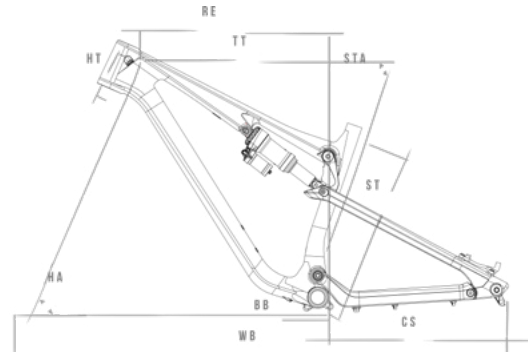
REACTOR

REACTOR 290 CARBON

MATERIAL	ULTRA STRONG T700/800 MONOCOQUE CARBON FIBRE
FORK TRAVEL	140MM (RS 150MM)
AXLE TO CROWN	554MM (RS 564MM)
FORK OFFSET	51MM
SHOCK TRAVEL	130MM
WHEELS SIZE	29"
MAX TYRE SIZE	2.6"
SHOCK SIZE	210X50MM
SHOCK HARDWARE F	25X8MM
SHOCK HARDWARE R	30X8MM
SIZING	M/L/XL
HEADTUBE	44-56MM TAPERED SEMI-INTEGRATED
HEADSET	ZS44-28.6 - T2 / ZS56/40 - BB
BEARINGS REQUIRED	2X NP-5 (6902 2RS), 4X NP-7 (6800 2RS), 4X NP-106 (6901 2RS)
SEATPOST	31.6MM (INTERNAL ROUTING FOR DROPPER SEATPOST)
SEAT CLAMP	36.4MM
BB	THREADED 73MM BSA
REAR HUB	BOOST 148X12MM
REAR AXLE	SRAM MAXLE STEALTH M12X1.75 180MM
CHAIN GUIDE	ISCG05
BRAKE MOUNT	180MM DIRECT POST
PROTECTION	3D CONTOURED RUBBER FRAME PROTECTION FOR DT/SS/CS

275 GEOMETRY

REACTOR

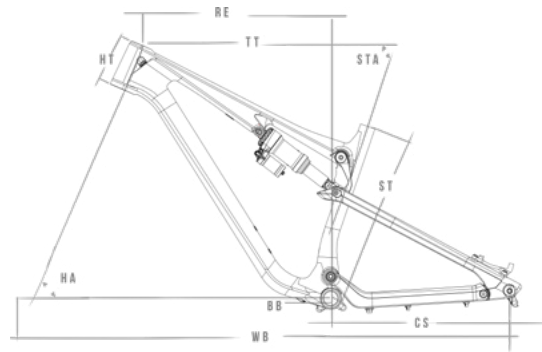


REACTOR 275 (ALLOY/CARBON)

FRAME SIZE	SMALL	MEDIUM	LARGE	X-LARGE
(ST) SEATTUBE LENGTH	381MM / 15"	420MM / 16.5"	458MM / 18"	508MM / 20"
(TTE) EFFECTIVE TOP TUBE LENGTH	580MM	610MM	640MM	675MM
(HT) HEADTUBE LENGTH	110MM	115MM	120MM	125MM
(HA) HEADTUBE ANGLE	66° (LOW 65.5)	66° (LOW 65.5)	66° (LOW 65.5)	66° (LOW 65.5)
(WB) WHEELBASE	1150MM	1181MM	1212MM	1247MM
(CS) CHAINSTAY LENGTH	430MM	430MM	430MM	430MM
(STE) EFFECTIVE SEATTUBE ANGLE	75.5° (LOW 75°)	75.5° (LOW 75°)	75.5° (LOW 75°)	75.5° (LOW 75°)
(BB) BOTTOM BRACKET DROP	-18MM (LOW -24MM)	-18MM (LOW -24MM)	-18MM (LOW -24MM)	-18MM (LOW -24MM)
BOTTOM BRACKET HEIGHT	336MM (LOW 330MM)	336MM (LOW 330MM)	336MM (LOW 330MM)	336MM (LOW 330MM)
(RE) REACH	425MM	454MM	482.5MM	516MM
STACK	600MM	605MM	609MM	613.5MM
FORK TRAVEL	150MM	150MM	150MM	150MM
FORK OFFSET	46MM	46MM	46MM	46MM
AXLE TO CROWN	545MM	545MM	545MM	545MM
SEAT POST DIAMETER	31.6MM	31.6MM	31.6MM	31.6MM
BOTTOM BRACKET TYPE	THREADED 73MM BSA	THREADED 73MM BSA	THREADED 73MM BSA	THREADED 73MM BSA
HEADSET TYPE	ZS 44MM/56MM SEMI INTEGRATED	ZS 44MM/56MM SEMI INTEGRATED	ZS 44MM/56MM SEMI INTEGRATED	ZS 44MM/56MM SEMI INTEGRATED

275 RS GEOMETRY

REACTOR

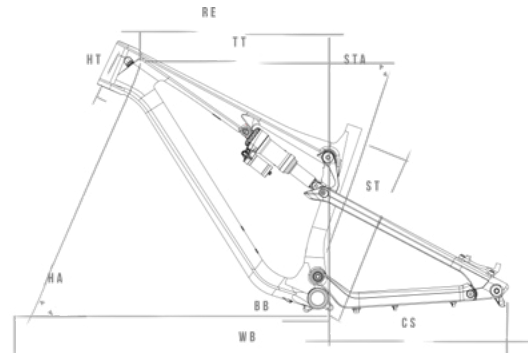


REACTOR 275 RS (ALLOY/CARBON)

FRAME SIZE	SMALL	MEDIUM	LARGE	X-LARGE
(ST) SEATTUBE LENGTH	381MM / 15"	420MM / 16.5"	458MM / 18"	508MM / 20"
(TTE) EFFECTIVE TOP TUBE LENGTH	581MM	611.2MM	641.5MM	676.3MM
(HT) HEADTUBE LENGTH	110MM	115MM	120MM	125MM
(HA) HEADTUBE ANGLE	65.5° (LOW 65)	65.5° (LOW 65)	65.5° (LOW 65)	65.5° (LOW 65)
(WB) WHEELBASE	1154MM	1185MM	1216MM	1251MM
(CS) CHAINSTAY LENGTH	430MM	430MM	430MM	430MM
(STE) EFFECTIVE SEATTUBE ANGLE	75.1° (LOW 74.6°)	75.1° (LOW 74.6°)	75.1° (LOW 74.6°)	75.1° (LOW 74.6°)
(BB) BOTTOM BRACKET DROP	-15MM (LOW -21MM)	-15MM (LOW -21MM)	-15MM (LOW -21MM)	-15MM (LOW -21MM)
BOTTOM BRACKET HEIGHT	339MM (LOW 333MM)	339MM (LOW 333MM)	339MM (LOW 333MM)	339MM (LOW 333MM)
(RE) REACH	420.2MM	449.5MM	478MM	511.5MM
STACK	603MM	608.5MM	612.5MM	617.3MM
FORK TRAVEL	160MM	160MM	160MM	160MM
FORK OFFSET	46MM	46MM	46MM	46MM
AXLE TO CROWN	555MM	555MM	555MM	555MM
SEAT POST DIAMETER	31.6MM	31.6MM	31.6MM	31.6MM
BOTTOM BRACKET TYPE	THREADED 73MM BSA	THREADED 73MM BSA	THREADED 73MM BSA	THREADED 73MM BSA
HEADSET TYPE	ZS 44MM/56MM SEMI INTEGRATED	ZS 44MM/56MM SEMI INTEGRATED	ZS 44MM/56MM SEMI INTEGRATED	ZS 44MM/56MM SEMI INTEGRATED

290 GEOMETRY

REACTOR

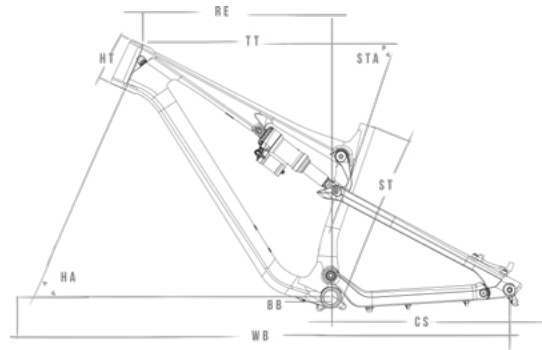


REACTOR 275 (ALLOY/CARBON)

FRAME SIZE	MEDIUM	LARGE	X-LARGE
(ST) SEATTUBE LENGTH	420MM / 16.5"	458MM / 18"	508MM / 20"
(TTE) EFFECTIVE TOP TUBE LENGTH	610MM	640MM	675MM
(HT) HEADTUBE LENGTH	105MM	110MM	115MM
(HA) HEADTUBE ANGLE	66° (LOW 65.5)	66° (LOW 65.5)	66° (LOW 65.5)
(WB) WHEELBASE	1205MM	1235MM	1271MM
(CS) CHAINSTAY LENGTH	440MM	440MM	440MM
(STE) EFFECTIVE SEATTUBE ANGLE	75.5° (LOW 75°)	75.5° (LOW 75°)	75.5° (LOW 75°)
(BB) BOTTOM BRACKET DROP	-33MM (LOW -39MM)	-33MM (LOW -39MM)	-33MM (LOW -39MM)
BOTTOM BRACKET HEIGHT	336MM (LOW 330MM)	336MM (LOW 330MM)	336MM (LOW 330MM)
(RE) REACH	451MM	480MM	514MM
STACK	615MM	620MM	625MM
FORK TRAVEL	140MM	140MM	140MM
FORK OFFSET	51MM	51MM	51MM
AXLE TO CROWN	554MM	554MM	554MM
SEAT POST DIAMETER	31.6MM	31.6MM	31.6MM
BOTTOM BRACKET TYPE	THREADED 73MM BSA	THREADED 73MM BSA	THREADED 73MM BSA
HEADSET TYPE	ZS 44MM/56MM SEMI INTEGRATED	ZS 44MM/56MM SEMI INTEGRATED	ZS 44MM/56MM SEMI INTEGRATED

290 RS GEOMETRY

REACTOR

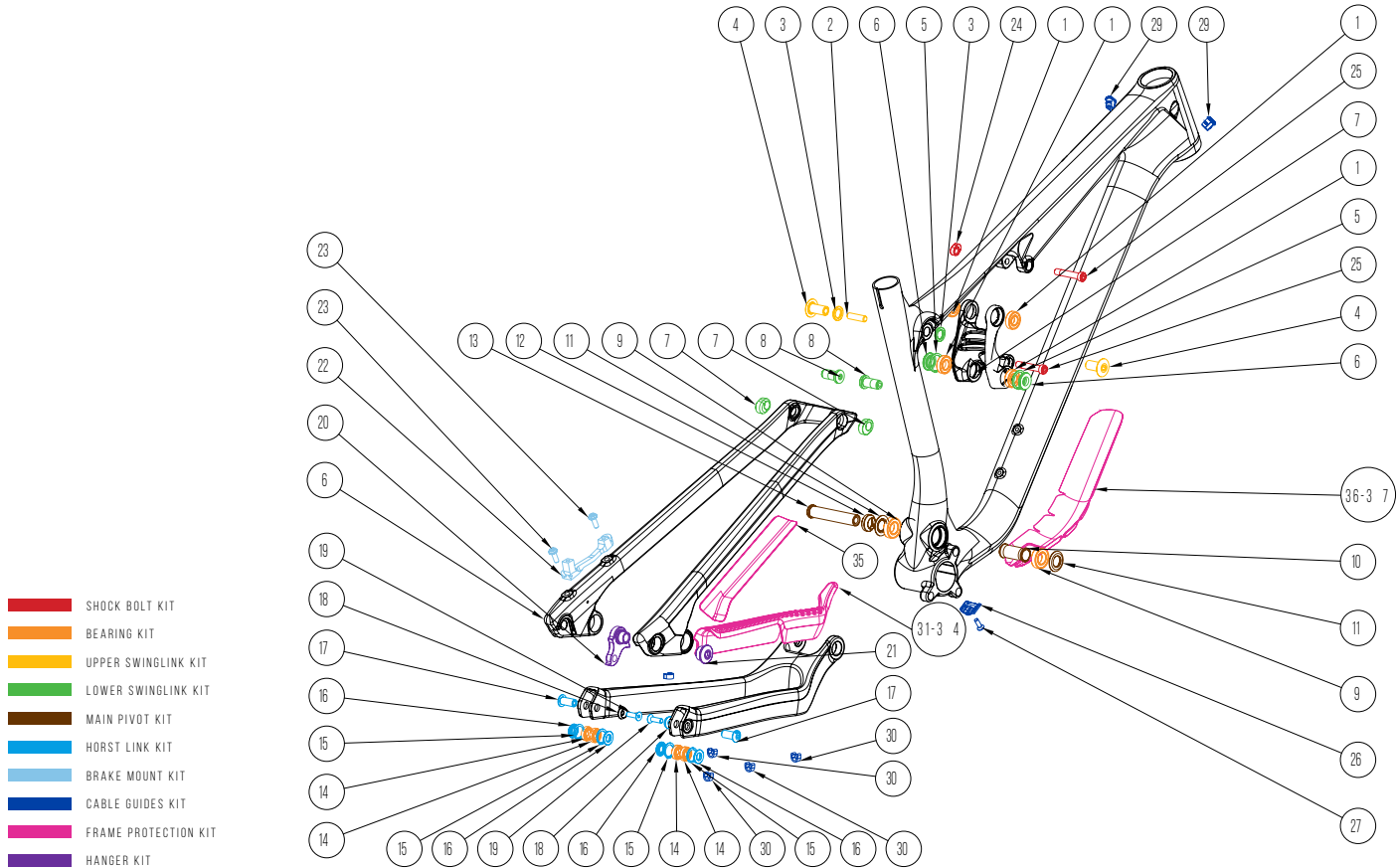


REACTOR 275 RS (ALLOY/CARBON)

FRAME SIZE	MEDIUM	LARGE	X-LARGE
(ST) SEATTUBE LENGTH	420MM / 16.5"	458MM / 18"	508MM / 20"
(TTE) EFFECTIVE TOP TUBE LENGTH	611.4MM	641.2MM	676.3MM
(HT) HEADTUBE LENGTH	105MM	110MM	115MM
(HA) HEADTUBE ANGLE	65.5° (LOW 65°)	65.5° (LOW 65°)	65.5° (LOW 65°)
(WB) WHEELBASE	1209MM	1239.1MM	1275.1MM
(CS) CHAINSTAY LENGTH	440MM	440MM	440MM
(STE) EFFECTIVE SEATTUBE ANGLE	75.1° (LOW 74.6°)	75.1° (LOW 74.6°)	75.1° (LOW 74.6°)
(BB) BOTTOM BRACKET DROP	-30MM (LOW -36MM)	-30MM (LOW -36MM)	-30MM (LOW -36MM)
BOTTOM BRACKET HEIGHT	336MM (LOW 330MM)	336MM (LOW 330MM)	336MM (LOW 330MM)
(RE) REACH	446.3MM	475.4MM	509.5MM
STACK	618.4MM	623.5MM	628.7MM
FORK TRAVEL	150MM	150MM	150MM
FORK OFFSET	51MM	51MM	51MM
AXLE TO CROWN	564MM	564MM	564MM
SEAT POST DIAMETER	31.6MM	31.6MM	31.6MM
BOTTOM BRACKET TYPE	THREADED 73MM BSA	THREADED 73MM BSA	THREADED 73MM BSA
HEADSET TYPE	ZS 44MM/56MM SEMI INTEGRATED	ZS 44MM/56MM SEMI INTEGRATED	ZS 44MM/56MM SEMI INTEGRATED

PART LIST

REACTOR



ITEM #	NUKEPROOF #	DESCRIPTION	QTY
1	NP-106	6901-2RS (B8)	4
2	NP-107	SWING LINK PIVOT AXLE	1
3	NP-108	SWING LINK PIVOT SPACER	2
4	NP-109	SWING LINK PIVOT BOLT	2
5	NP-110	SWING LINK LOCK RING	2
6	NP-111	LOWER LINKAGE WASHER	2
7	NP-112	FLIP CHIP	2
8	NP-113	LOWER LINKAGE BOLT	2
9	NP-114	6902-2RS	2
10	NP-115	MAIN PIVOT BEARING SPACER	1
11	NP-116	MAIN PIVOT WASHWER	2
12	NP-117	MAIN PIVOT COLLETT WASHER	1
13	NP-118	MAIN PIVOT BOLT	1
14	NP-119	6800-2RS	4
15	NP-120	HORST LINK PIVOT LOCK RING	4
16	NP-121	HORST LINK PIVOT WASHER	4
17	NP-122	HORST LINK PIVOT AXLE	2
18	NP-123	HORST LINK PIVOT BOLT SPACER	2

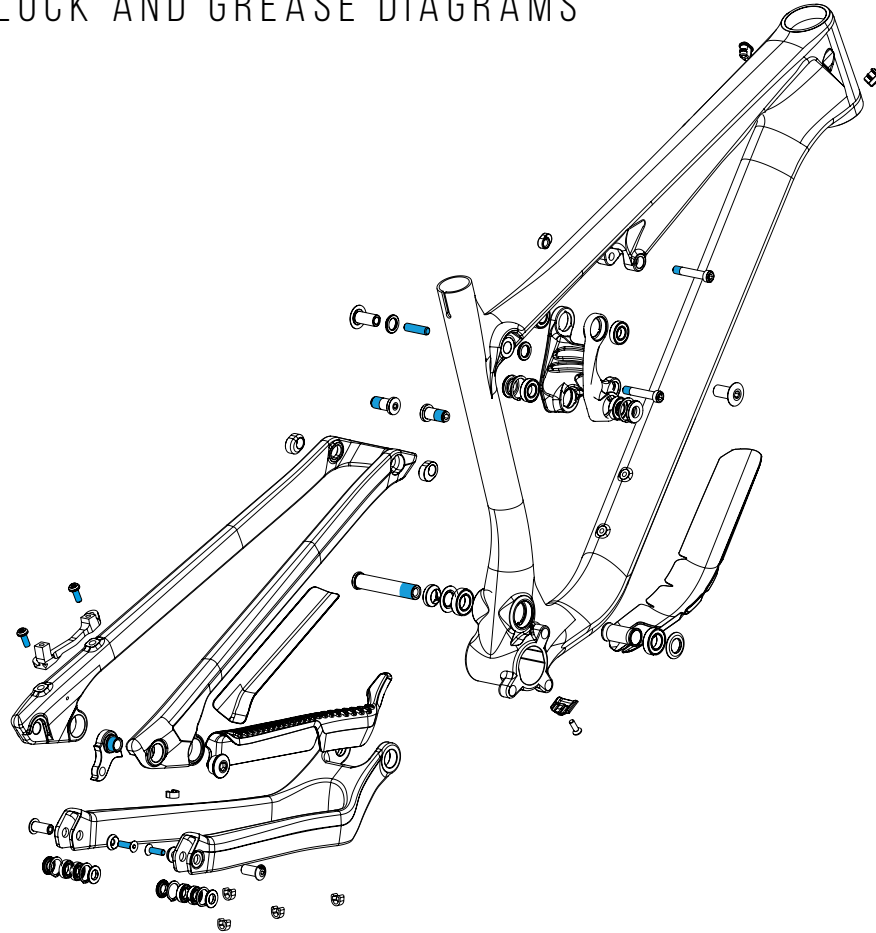
19	NP-124	HORST LINK PIVOT BOLT	2
20	NP-125	REACTOR GEAR HANGER	1
21	NP-126	REACTOR GEAR HANGER NUT	1
22	NP-127	BRAKE ADAPTOR	1
23	NP-128	BRAKE ADAPTOR BOLT	2
24	NP-129	SHOCK BOLT NUT	1
25	NP-130	SHOCK BOLT	2
26	NP-131	CABLE EXIT CLAMP	1
27	NP-132	INTERNAL CABLE EXIT CLAMP	1
28	NP-133	INTERNAL SHOCK CABLE EXCIT CLAMP	1
29	NP-134	INTERNAL CABLE ENTRY GUIDE	2
30	NP-135	PLASTIC CABLE GUIDE	5
31	NP-136	CARBON REACTOR CS PROTECTION	1
32	NP-137	CARBON CHAIN STAY PROTECTOR 290	1
33	NP-138	ALLOY CHAIN STAY PROTECTOR 275	1
34	NP-139	CARBON SEAT STAY PROTECTOR	1
35	NP-140	CARBON REACTOR SS PROTECTION	1
36	NP-141	CARBON DOWNTUBE PROTECTOR	1
37	NP-142	ALLOY DOWNTUBE PROTECTOR	1

TORQUE, THREADLOCK AND GREASE DIAGRAMS

REACTOR

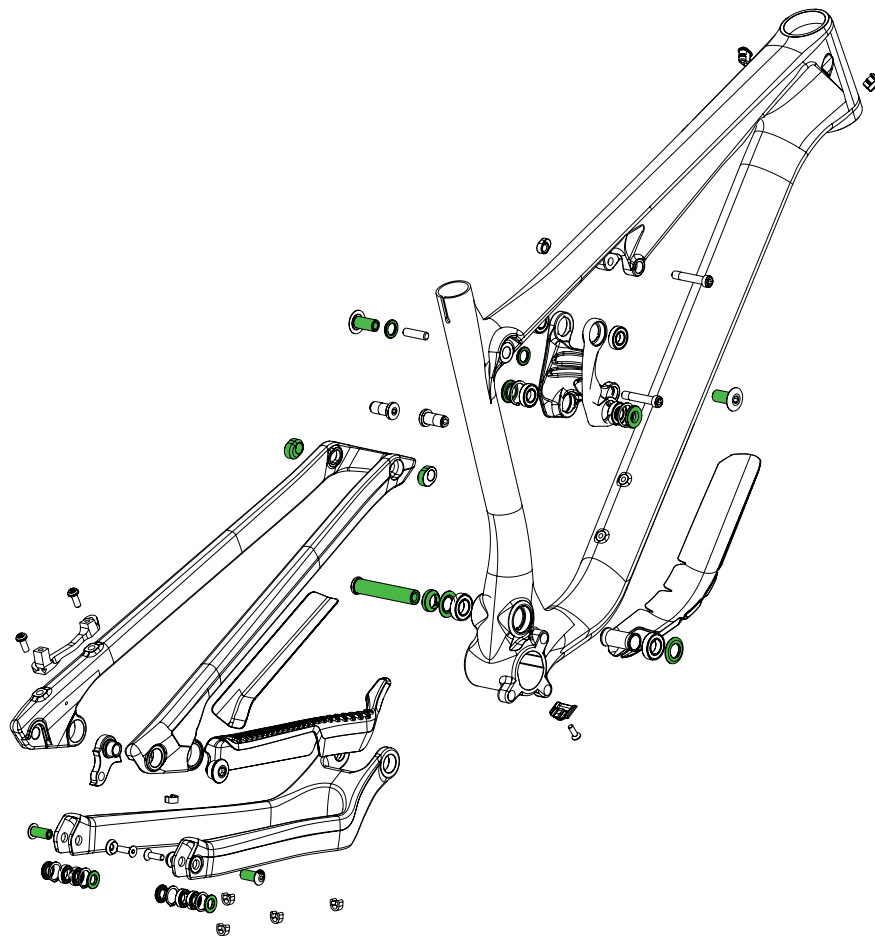
RECOMMENDED TORQUE VALUES

PART NUMBER	TORQUE
SHOCK BOLTS	15MN
SWING LINK	8MN
MAIN PIVOT	15MN
HORST LINK	6NM
CABLE GUIDE	3NM
HANGER	3NM
FLIP CHIP BOLT	16NM



NOTE: USE MEDIUM STRENGTH THREADLOCK
WE RECOMMEND: LOCTITE 243

 THREADLOCK



 GREASE

SEATSTAY FLIP CHIP INSTRUCTIONS

REACTOR

THERE ARE 2X CHAINSTAY POSITIONS THAT ARE POSSIBLE ON THE NUKEPROOF REACTOR 27.5" AND 29" FRAMES: **"TRAIL"** OR **"RAIL"**. (ALL FRAMEAS COME FITTED IN THE **TRAIL** POSITION).

REACTOR 275&290 FLIP CHIP POSITION	(HA) HEADTUBE ANGLE	(STE) EFFECTIVE SEATTUBE ANGLE	(BB) BOTTOM BRACKET DROP	BOTTOM BRACKET HEIGHT
TRAIL	66°	75.5°	-18MM C55	336MM
RAIL	65.5°	75°	-24MM	330MM

THESE CHIPS ALTER THE HEAD ANGLE, SEAT ANGLE AND THE HEIGHT OF THE BOTTOM BRACKET.

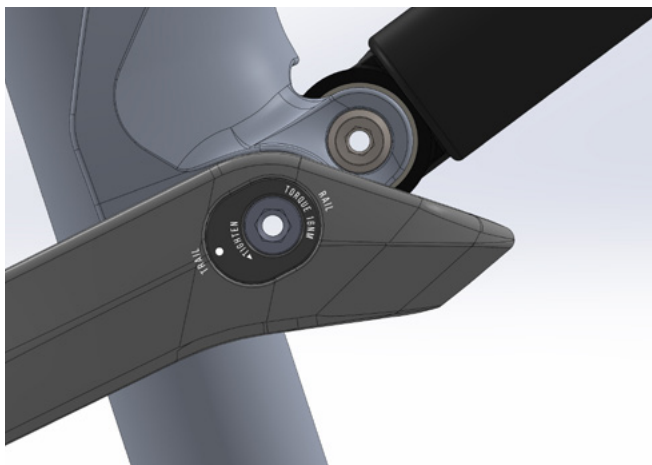
TRAIL – AS THE NAME SUGGESTS, THIS SETTING IS BEST SUITED FOR TRAIL RIDING, WHERE YOU WILL SPEND TIME CLIMBING AS WELL AS DESCENDING ON THE BIKE.

RAIL – THE RAIL SETTING IS THE MORE AGGRESSIVE OF THE TWO; SLACKENING THE HEAD ANGLE -0.5DEG AND LOWERING THE BOTTOM BRACKET BY 6MM. THIS SETTING IS BEST SUITED FOR A DAY WHEN YOU ARE RIDING UPLIFTS OR MOSTLY DESCENDING.

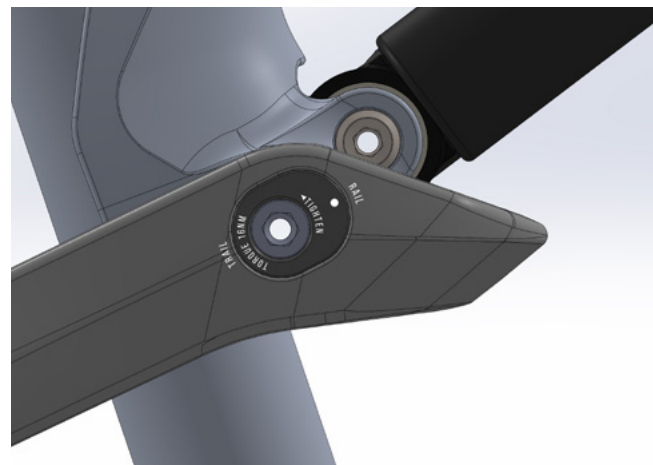
INSTRUCTIONS FOR HOW TO CHANGE THE SEATSTAY FLIP CHIP POSITION FROM "TRAIL" TO "RAIL":

1. INSERT THE BIKE INTO A BIKE STAND, CLAMPING THE SEATPOST FIRMLY.
2. USING A 5MM ALLEN KEY REMOVE THE REAR AXLE/WHEEL AND SET ASIDE. (NOTE THAT THE WHEEL DOES NOT HAVE TO BE REMOVED BUT IT IS EASIER IF YOU DO.)
3. START ON THE DRIVE-SIDE. USING A 6MM ALLEN KEY, TURN THE FLIP CHIP HEX CLOCKWISE TO LOOSEN THE BOLT FROM THE CHIP. AS YOU LOOSEN IT, THE CHIP SHOULD START TO SLIDE OUT/MOVE TOWARD YOU. IF IT DOES NOT, THEN USE A FINGER TO PUSH THE BOLT FROM THE BACK. REMOVE THE CHIP ONCE FREE AND SET ASIDE.
4. REPEAT STEP 3 BUT FOR THE NON-DRIVE SIDE.
5. RE-INSERT THE NON-DRIVE-SIDE FLIP CHIP IN THE "RAIL" POSITION. YOU MAY NEED TO LIFT THE BACK END OF THE BIKE SLIGHTLY TO DO SO. TURN THE FLIP CHIP HEX BOLT ANTI-CLOCKWISE TO THREAD THE BOLT INTO THE CHIP. BE CAREFUL NOT TO CROSS THE THREADS. YOU MAY NEED TO PUSH THE BOLT FROM THE BACK TO START THE THREAD. (FOR POSITION REFER TO THE SEATSTAY FLIP CHIP ORIENTATION DIAGRAM.)
6. REPEAT STEP 5 BUT FOR THE DRIVE-SIDE.
7. TORQUE BOTH FLIP CHIP HEX BOLTS TO 16NM.
8. RE-INSERT THE REAR WHEEL AND RE-TIGHTEN THE REAR AXLE TO THE CORRECT TORQUE.
9. REMOVE FROM THE BIKE STAND AND GO SHRED!

SEATSTAY FLIP CHIP ORIENTATION DIAGRAM



TRAIL



RAIL

 NUKEPROOF

FOR ANY MORE INFORMATION PLEASE VISIT WWW.NUKEPROOF.COM

#REDEFINEYOURLIMIT