



**32" 1920x1080 75Hz 16:9 Aspect
Ratio Curved Gaming Monitor**

INSTRUCTION MANUAL



[View this product on decogear.com](https://www.decogear.com)

MODEL: DGVIEW32AP

Table of Contents

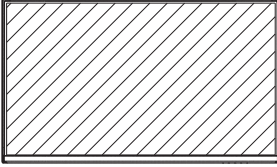
Part 1: Safety Precautions	4
Part 2: Box Contents	5
Part 3: Product Overview	6
3.1 – Monitor Buttons	6
3.2 – Monitor Ports.....	6
Part 4: Stand Installation	7
Part 5: Wall Mounting	9
Part 6: Connectivity Options	10
6.1 – Connecting the Power Cable.....	10
6.2 – Connecting Your Earphones	10
6.3 – VGA Connectivity.....	11
6.4 – HDMI Connectivity.....	11
Part 7: Basic Operation	12
Part 8: Indicator Light	12
Part 9: OSD	13
9.1 – OSD Menu Functions	14
Part 10: LED Effects and Gameplus Switching	15
Part 11: Troubleshooting	16
11.1 – General Problems.....	16
Part 12: Information	18
12.1 – Specifications	18
Part 13: Supported resolution and refresh rate	19
13.1 – Supported VGA Resolution.....	19
13.2 – Supported HDMI Resolution.....	20
Part 14: How to adjust the refresh rate	21
14.1 – How to choose a high refresh rate for WIN10.....	21
14.2 – How to choose a high refresh rate for WIN7.....	25
Other Useful Information(Cont.)	27
Notice for FCC	28

Part 1: Safety Precautions

Read and observe the following warnings and information below.

1. Before cleaning, always unplug your monitor. It is recommended that you use dry cloth or lightly damp cloth to clean your monitor. Dry cloth is, however, the safest. If using damp cloth, wait for your monitor to completely dry before plugging it in again.
2. Do not use alcohol or ammonia-based cleaner and/or liquids to clean your monitor.
3. This monitor features ventilation openings on the back of the unit. Avoid blocking these openings to prevent the monitor from overheating.
4. Avoid placing this monitor near any heat sources e.g: portable heaters or heating vents, as this may cause damage to your monitor.
5. Do not spray cleaner and or any kind of liquid directly onto the monitor's screen or any part of the monitor.
6. Do not insert anything into any part of the monitor especially the ventilation openings.
7. Always make sure your monitor is placed on a secure, level surface to prevent it from falling and sustaining damage.
8. Unplug your monitor during any extended periods of non-use.
9. Do not place heavy items on the monitor or monitor cables.
10. Do not attempt to disassemble or remove parts from the monitor. Any disassembly or modification etc. not performed by an authorized technician can result in damage to the monitor and/or possible exposure to high voltage electricity which may lead to serious injury or death.

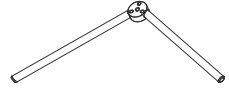
Part 2: Box Contents



Monitor x 1



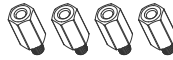
Lifting Stand x 1



Stand Base x 1



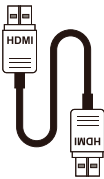
Screws x3
(PM5*11)



Screws x 4
(for Wall Mounting)



Power Cable x 1



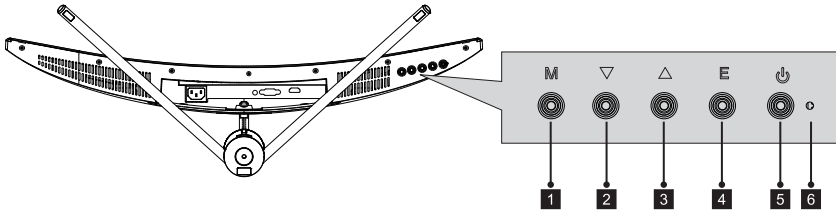
HDMI Cable x 1



User Manual x 1

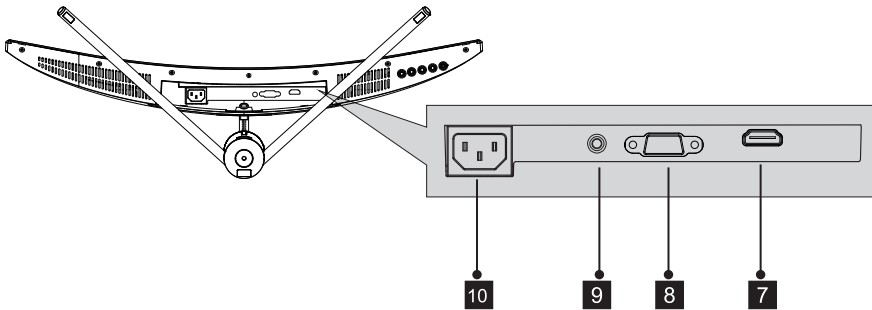
Part 3: Product Overview

3.1 – Monitor Buttons



- 1 M Menu Button** : Press to display the OSD menu or enter sub-menus.
- 2 ▼ Down Button** : Press to move down in the menus.
- 3 ▲ Up Button** : Press to move up in the menus.
- 4 E Exit Button** : Press to exit.
- 5 ⏻ Power Button** : Press to turn the monitor on/off.
- 6 LED Indicator** : Changes colors to indicate status.

3.2 – Monitor Ports



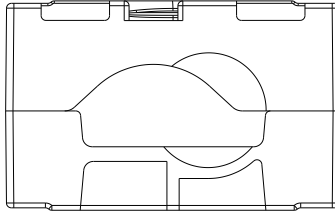
- 7 HDMI Connector** : Insert one end of the HDMI cable into the computer's HDMI output and connect the other end to the monitor's HDMI port.
- 8 VGA Connector** : Insert one end of the VGA cable into the computer's VGA output and connect the other end to the monitor's VGA port.
- 9 Audio Output** : Insert one end of the Audio cable into the computer's Audio output to receive the Audio signals from your monitor.
- 10 Power Connector** : Insert the power adapter to supply power to the monitor.

Part 4: Stand Installation

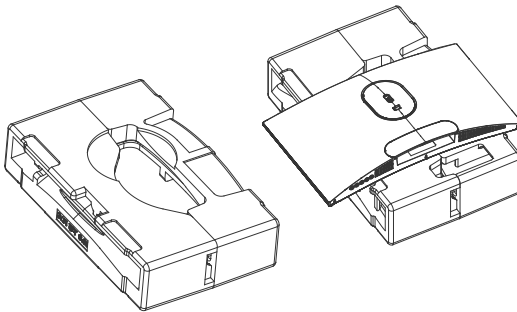


Keep the foam underneath the monitor before attaching the stand.

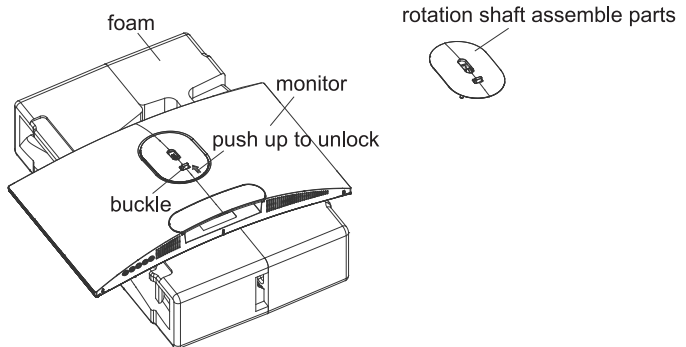
1. Open the package and take out the product with foam still attached. Gently place it on a desktop or table.



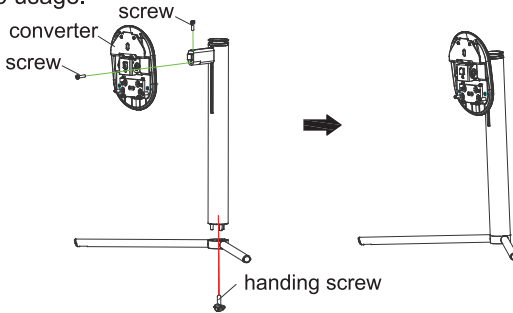
2. Take out stand rod and base. Fasten the base and stand rod with attached handling screws.



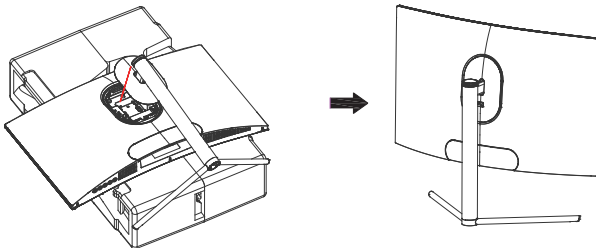
3. As picture, push the click button and take out the rotation shaft decoration cover.



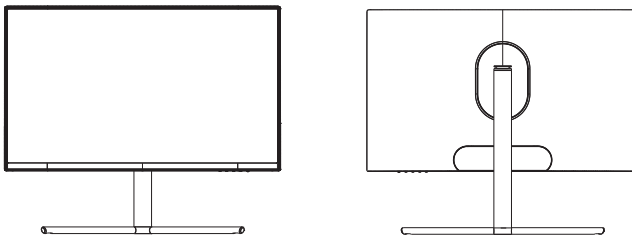
4. Take out rotation shaft assembly part and stand stem. Use 2 pcs CM5*11mm screws to fasten them. As pictures shows, use 1pcs CM6 hand screws to fasten stand stem and base. Please be noted there is 1pcs extra CM5*11mm for back-up usage.




5. As picture shows, place well assembled stand part in corresponding slot of back cover. Gently push stand stem to make sure rotation shaft assembly part well clicked. And then handle and lift gently middle position of stand stem, confirm twice time to make sure it's well clicked. If dismantle the monitor, operate by reversing all the steps of installation.



6. Grab stands and straight up monitor.

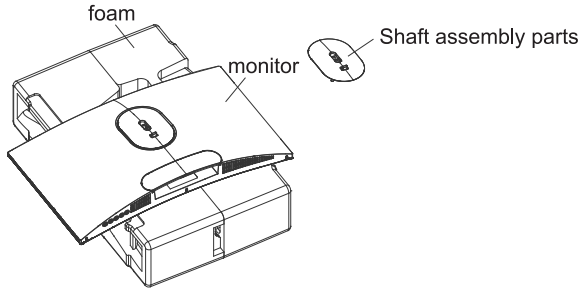


 Note: Please keep monitor panel attach with left foam while straightening up the monitor; do not touch screen in case of any panel breaking.

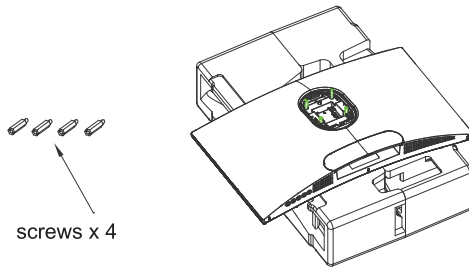
Part 5: Wall Mounting

VESA and/or mounting accessories not included.

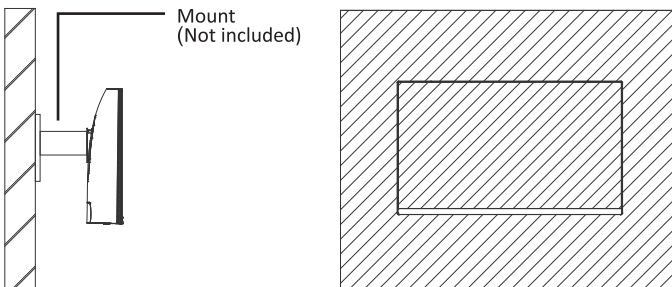
1. Take out protection bag and monitor. And then gently place it on inner package. Take away rotation shaft assembly part.



2. Find out 4pcs 35mm Hexagonal iron stud. And then fasten them into holes of M4 screws thread.(As pictures shows the position). Use slotted screwdriver to fasten all them. Please be noted that make sure panel attach the foam during installation or dismantling, to avoid panel breaking.



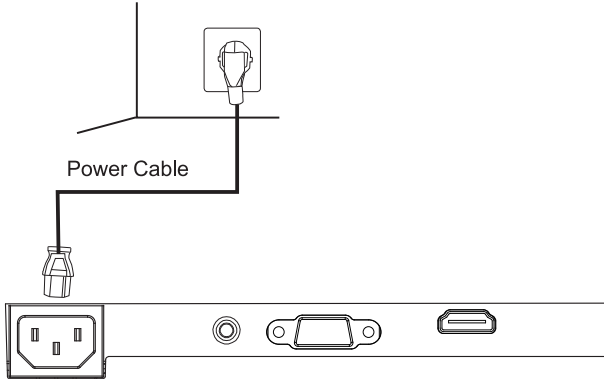
3. Your monitor is now ready to be attached to a wall-mounting bracket. To avoid damage, please do not pinch the screen during bracket installation.



Part 6: Connectivity Options

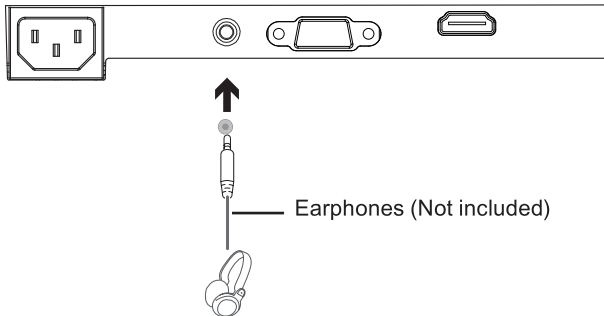
6.1 – Connecting the Power Cable

Connect the included power cable to the power connector, and then plug the other end into an wall outlet.



6.2 – Connecting Your Earphones

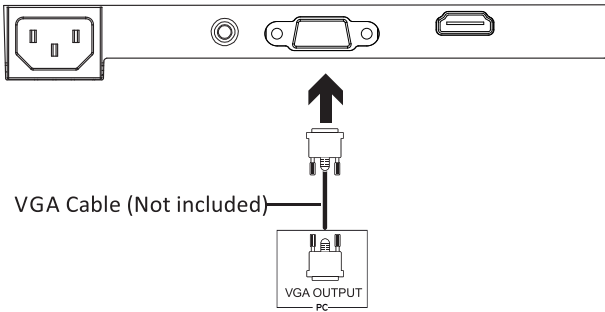
Plug in your earphones to receive audio signals from your monitor. If your earphones are connected to the monitor and audio devices are connected to your computer at the same time, the audio devices will not produce sound. Earphones and other audio devices not included.



Listening to loud audio for prolonged periods of time may permanently damage your hearing.

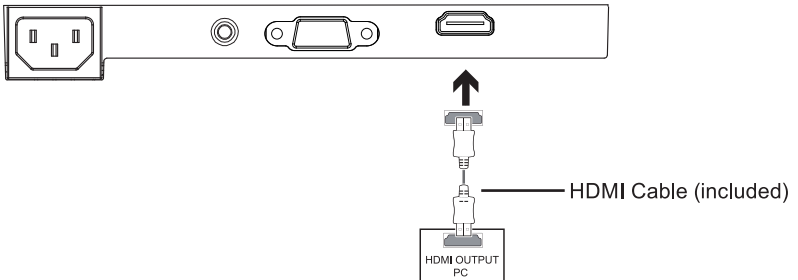
6.3 – VGA Connectivity

In order for the monitor to receive VGA signals from the computer, use a VGA cable to connect the monitor to the computer.



6.4 – HDMI Connectivity

In order for the monitor to receive HDMI signals from the computer, use an HDMI cable to connect the monitor to the computer.



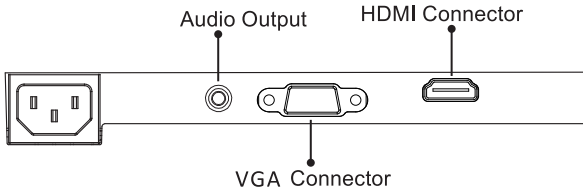
Part 7: Basic Operation

1. Insert one end of the HDMI cable to the graphics card in your PC. Other types of connection can be used. additional cables not included.



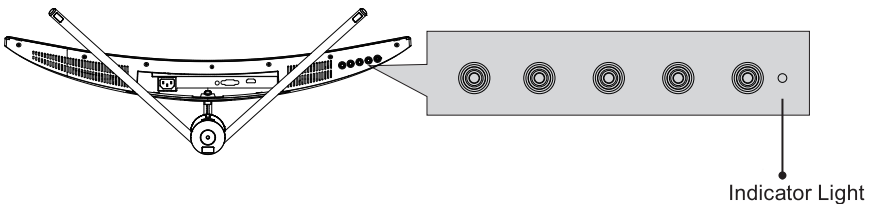
For optimal refresh rate (or “performance”), it is recommended to use a DP (display port) or HDMI cable with the monitor’s corresponding connector.

2. Connect the other end of the cable to the corresponding connector on your monitor. See the image below.



3. Connect the power cable to your monitor then connect the other end to your power source. It is recommended that you use a surge protector with adequate voltage if a wall outlet cannot be reached directly.
4. Locate the power button on the monitor and press it to turn the monitor on.


Part 8: Indicator Light



Solid blue light indicates power is on and the monitor is operating normally. Flashing blue light indicates no video source, no horizontal or vertical signal has been detected. Please ensure your computer is on and all video cables are fully inserted and/or connected.

Part 9: OSD

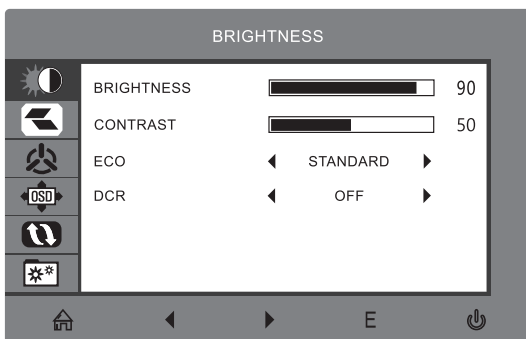
The On-Screen Display (OSD) Menu may be used to adjust your monitor's settings and appears on screen after turning on the monitor and pressing the M button.


-  When using the monitor for the first time, settings will automatically adjust to optimal settings according to your computer's configuration and parts etc.

1. Press any one of the buttons (M, ▼, ▲, E, ⏻) to activate the navigation window.



2. Press M  to enter the OSD menu.



3. Press ▼ or ▲ to browse functions.
 - Highlight the desired function, then press M to enter the sub-menu.
 - Press ▼ or ▲ to browse sub-menus, then press M to highlight the desired function.
 - Press ▼ or ▲ to highlight an option, then press M to confirm the settings and exit the current screen.
4. Press E  to exit the current screen.

9.1 – OSD Menu Functions

Main Menu	Sub-Menu	Options	Description
BRIGHTNESS	Brightness	0-100	Adjust display brightness
	Contrast	0-100	Adjust display contrast
	ECO	Standard, Game, RTS, FPS, Movie, Text	Set visual mode
	DCR	On	Turn on DCR function
		Off	Turn off DCR function
IMAGE	Aspect	Wide, Auto, 4:3	Set aspect ratio
COLOR TEMP.	Color temp.	Warm, User, Cool,	Adjust color temperature
	Red	0-100	Customize RGB components
	Green	0-100	
	Blue	0-100	
OSD SETTING	Language	English, Español, Русский, Français, 한국, Português, Deutsch, Türkçe, 简体中文, 日本語, Polski, Italiano, Nederlands	Set OSD language
	OSD H. POS.	0-100	Adjust the OSD horizontal position
	OSD V.POS.	0-100	Adjust the OSD vertical position
	OSD Timer	0-60	Set how long the OSD remains open after non-use
	Transparency	0-100	Set the OSD overall transparency
RESET	Reset	N/A	Reset monitor configurations
MISC	Signal source	VGA, HDMI	VGA or HDMI the input signal
	Mute	On, Off	Turn mute mode on/off
	Volume	0-100	Adjust audio volume
	Low blue ray	0-100	Set blue light filtering level
	LED effect	Normal, Off, Flicker	Set LED rear display modes

Part 10: LED Effects and Gameplus Switching

1. Press any one of the buttons (M, ▼, ▲, E, ⏻) to activate the navigation window.



2. Press ▼ to switch Gameplus modes. According to the needs of your game, choose the corresponding game icon. These game icons are primarily designed to optimize your aim during shooting games, though they can be used for other scenarios.



3. Press ▲ (⏻) to switch LED rear display modes or turn off the LED effects.



Part 11: Troubleshooting

11.1 – General Problems

The screen is blank

- Press the power button to turn the monitor on.
- Confirm the brightness and contrast settings are set normally.
- Check if the indicator light is flashing. If so, there is no signal from your video source.
- If your source is a notebook or laptop, make sure it's powered on and set to mirror or extension mode.

The image is out of focus

- Make sure the video cable is inserted properly at both ends.

The screen is flashing

- Try an alternative power source. Insufficient power can cause this issue.
- Make sure devices such as non-shielded speakers, fluorescent lighting, AC transformers, table fans etc. are a safe distance away from your screen to avoid magnetic disturbances.

The color bleeds or visual effects appear unusual.

- If your screen is all red or blue, or any colors disappear, check to see that the cable is properly inserted. A loose connection can cause a bad signal.
- Try connecting to another video source for comparison.

The screen appears to be scrolling, rolling, or moving unusually.

- Check that your source frequency is within 48-100Hz.
- Reconnect and ensure your video cable is secure.

The monitor needs cleaning

- Make sure the monitor has been powered off before cleaning.
- Always use soft, non-abrasive cloth when cleaning.
- Use dry, non-abrasive cloth to gently remove debris or dust.
- If necessary, lightly dampen a non-abrasive cloth with water and gently clean the surface.
- Never use alcohol or ammonia-based cleaning solutions.
- Never spray liquid directly onto any part of the monitor.

The indicator light does not work

- Check if the power is on.
- Make sure the power cable is properly connected to the monitor and power source.

Cannot plug and play.

- Check PC requirements to make sure it is compatible with the monitor.
- Check graphics card requirements to make sure it is compatible with the monitor.

Dim image

- Adjust the brightness and contrast ratio.

Image jitter/moire pattern

- Nearby electric equipment may be interfering with the monitor.

Light indicator is on or flashing, but there is no image displayed on screen

- Check if the monitor power is on.
- Check if the graphics card is installed properly.
- Make sure the power cable is properly connected to the monitor and power source.

Image position is not centered/the size is not right

- Please adjust Clock or Auto settings.

Color difference (colors are not optimized)

- Adjust RGB color settings or reset color temperature.

Part 12: Information

12.1 – Specifications

Item	Detail
Model Number	DGVIEW32AP
Screen Size	31.5"
Curvature	1500R
Viewing Angle	178° (H)/178° (V)
Aspect Ratio	16:9
Resolution	1920x1080p
Backlight	E-LED
Typical Brightness	250
Default Color Temperature	6500
Contrast Ratio	3000:1(Static); 1000000:1(Dynamic)
Dot Pitch	0.36375(H) x 0.12125(V)
Response Time	6ms(OD)
Refresh Rate	75Hz
Ports	VGA x 1, HDMI x 1, Audio Output x 1
Power	AC 100-240V~ 50/60Hz 1.5A
Consumption	Max:56W, Typical: 45W, Standby ≤ 0.5W
OSD Language	English, 简体中文, 한국어, Русский, Español, 日本語, Français Português, Deutsch, Türkçe, Polski, Italiano, Nederlands
Environmental Temperature & Humidity	Operating temperature: 32°F to 95°F
	Storage temperature: -4°F to 140°F
	Operating relative humidity: RH 10% to 85% (non-condensation)
Wall Mounting	75mm x 75mm
Dimension (With Stand)	28.05 x 10.09 x 22.13 in (712.57 x 256.25 x 562.11mm)
Weight (Net/Gross Weight)	7.85 kg / 9.90 kg

Part 13: Supported resolution and refresh rate

13.1 Supported VGA Resolution

RESOLUTION & REFRESH RATE
1920*1080@60Hz
1366*768@60Hz
1152*864@75Hz@4*3
1152*720@Hz@16*10
1152*922@75Hz@5*4
1152*648@75Hz@16*9
720*400@70Hz
640*480@60Hz
640*480@75Hz
800*600@60Hz
800*600@75Hz
1024*768@60Hz
1024*768@75Hz
1280*1024@75Hz

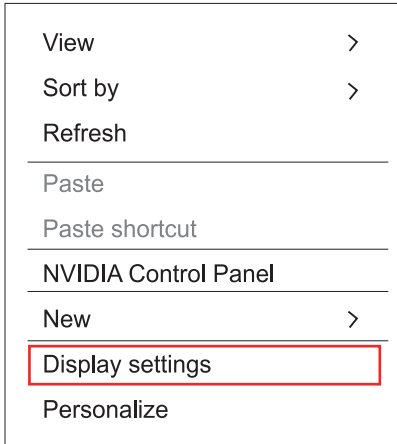
13.2 Supported HDMI Resolution

RESOLUTION & REFRESH RATE
1920*1080@60Hz
1920*1080@75Hz
1366*768@60Hz
1920*1080p@59.94Hz/60Hz@16:9@1:1
640*480p@59.94Hz/60Hz@4:3@1:1
720*480@59.94Hz/60Hz@4:3@8:9
720*480@59.94Hz/60Hz@16:9@32:27
1280*720p@59.94/60Hz@16:9@1:1
720*576p@50Hz@4:3@16:15
720*576p@50Hz@16:9@64:45
1280*720p@50Hz@16:9@1:1
1920*1080p@50Hz@16:9@1:1
1152*864@75Hz@4*3
1152*720@Hz@16*10
1152*922@75Hz@5*4
1152*648@75Hz@16*9
720*400@70Hz
640*480@60Hz
640*480@75Hz
800*600@60Hz
800*600@75Hz
1024*768@60Hz
1024*768@75Hz
1280*1024@75Hz

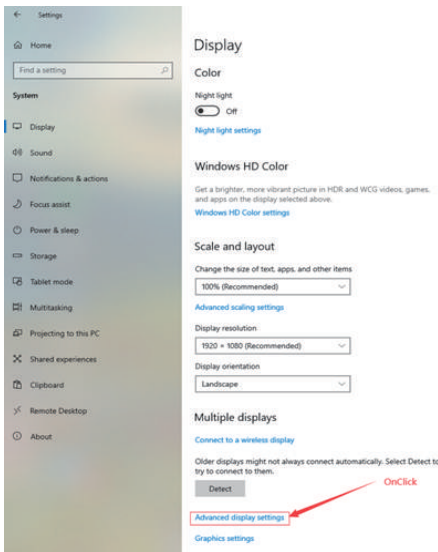
Part 14: How to adjust the refresh rate

14.1 How to choose a high refresh rate for WIN10

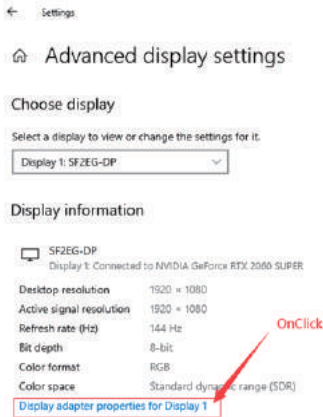
1. Right-click “Display settings” on the desktop; (PIs refer to the below picture)



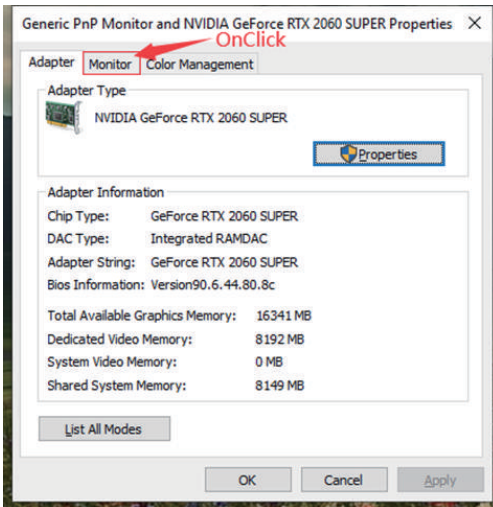
2. Click “Advanced display settings” (PIs refer to the below picture)



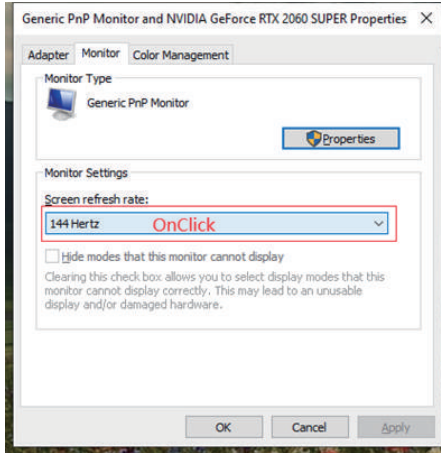
3. Click "Display adapter properties of Monitor 1" (Pls refer to the below picture)



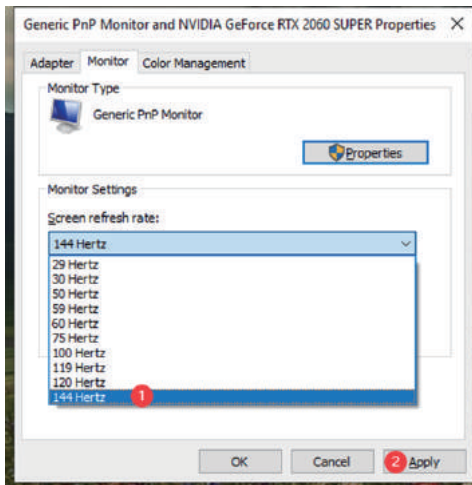
4. Click "Monitor" (Pls refer to the below picture)



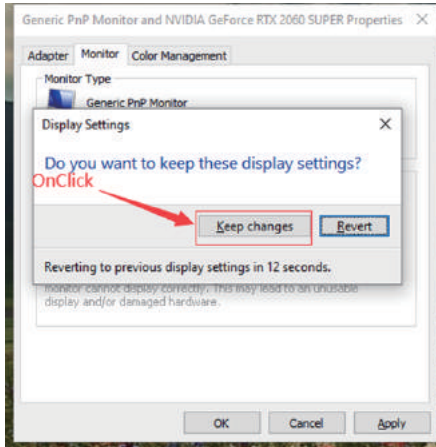
5. Click "Screen Refresh Rate(S)": Options (Pls refer to the below picture)



6. Select the refresh rate which you like, Then click the "Apply" (Pls see the below picture)
(ps : The highest refresh rate is depends on the monitor which support, Pls refer to the below picture)

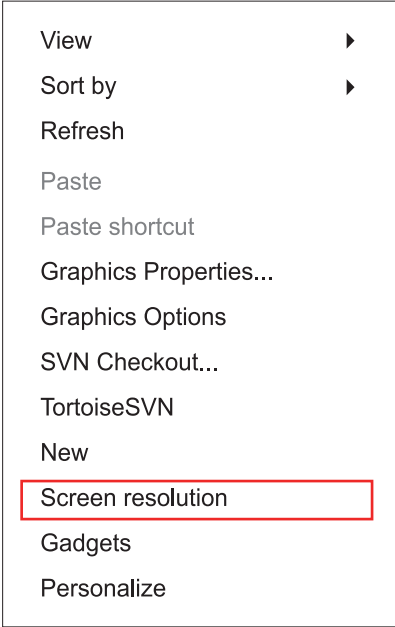


7. After clicking the “Apply”, you must click “Keep changes” then the monitor switch to refresh rate which you like.(Pls refer to the below picture)

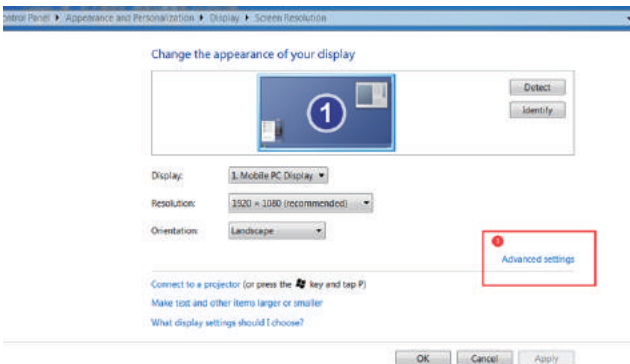


14.2 How to choose a high refresh rate for WIN7

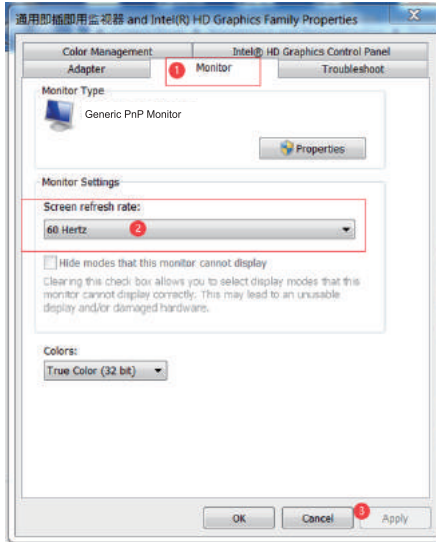
1. Right-click "Screen resolution (C)" on the desktop;(Pls refer to the below picture)



2. Click on "Advanced Settings" ; (Pls refer to the below picture)



3. Click “Monitor” and Choose “Monitor Settings”, then choose any refresh rate which you like, Finally Click the “Apply”.



Other Useful Information (Cont.)

Responsible Disposal

Packaging:The packaging of this product has been selected from environmentally friendly materials and can usually be recycled. Please ensure these are disposed of correctly. Plastic wrapping can be a suffocation hazard for babies and young children, please ensure all packaging materials are out of reach and are safely disposed of. Please ensure they are offered for recycling rather than throwing these materials away.

Monitor:At the end of its working life, do not throw this monitor out with your household rubbish. An environmentally friendly method of disposal will ensure that valuable raw materials can be recycled and used again. Contact your local authority for your nearest recycling centre. Electrical and electronic items contain materials and substances which, if handled or disposed of incorrectly, could potentially be hazardous to the environment and human health.

Manufacturer's 1-Year Limited Warranty

The manufacturer warrants that all parts and components are defect free in materials and workmanship for 1 year. This warranty is valid only in accordance with the conditions set forth below:

1. The warranty extends only to the original consumer purchaser and is not transferable. In addition, proof of purchase must be demonstrated.
2. This limited warranty is the only written or express warranty given by the manufacturer. Any implied warranty of merchantability or fitness for a particular purpose on this product is limited in duration to the duration of this warranty. Some states do not allow limitations on how long an implied warranty lasts, so the above limitation may not apply to you.
3. This warranty gives you specific legal rights. You may also have other rights which vary by state

Procedure for Replacement or Return within the 1 Year:

To return the product for replacement or refund within the 1 year, the original purchaser must pack the product securely and send it postage paid with a description of the reason for replacement or refund, proof of purchase, and include your order number on the package, to the following address:

Deco Gear
80 Carter Drive
Edison, NJ 08817

For Technical and Warranty Support

 **1-800-572-3224**

 **WWW.DECOGEAR.COM**

 **80 Carter Dr.**

 **Edison, NJ, 08817**

Notice for FCC



This device complies with Part 15 of the FCC rules. Operation is subject to the following two conditions: (1) this device may not cause harmful interference, and (2) this device must accept any interference received, including interference that may cause undesired operation.

This equipment has been tested and found to comply with the limits for a Class B digital device, pursuant to Part 15 of the FCC Rules. These limits are designed to provide reasonable protection against harmful interference in a residential installation. This equipment generates, uses and can radiate radio frequency energy and, if not installed and used in accordance with the instructions, may cause harmful interference to radio communications. However, there is no guarantee that interference will not occur in a particular installation. If this equipment does cause harmful interference to radio or television reception, which can be determined by turning the equipment off and on, the user is encouraged to try to correct the interference by one or more of the following measures:

- Reorient or relocate the receiving antenna.
- Increase the separation between the equipment and receiver.
- Connect the equipment into an outlet on a circuit different from that to which the receiver is connected.
- Consult the dealer or an experienced radio/TV technician for help.



The terms HDMI and HDMI High-Definition Multimedia Interface, and the HDMI Logo are trademarks or registered trademarks of HDMI Licensing Administrator, Inc. in the United States and other countries.

物料号码	902-32CHF-20001		
厂内型号	32CHF	厂外型号	DGVIEW32AP
物料名称	说明书	品 牌	Deco Gear
协力厂商		日 期	20200807
规 格	140*210mm 120g双铜+80g双铜骑钉彩印		
要 求			
版 本	V01	设 计	liumeihong
确 认		核 准	

注：封二封三不印内容，页数不够可加白页。