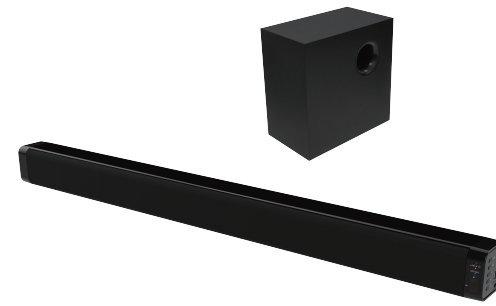


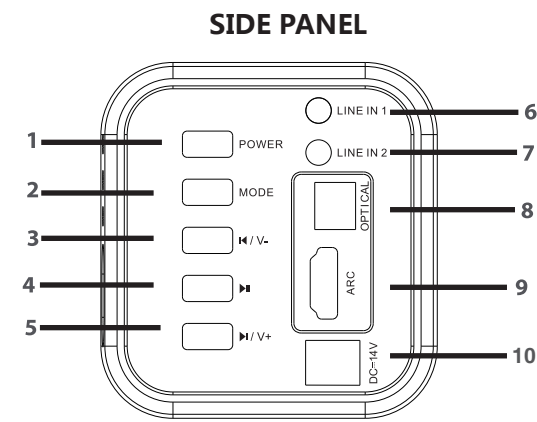
decohome

SOUNDBAR
MODEL:DGSB100BLK



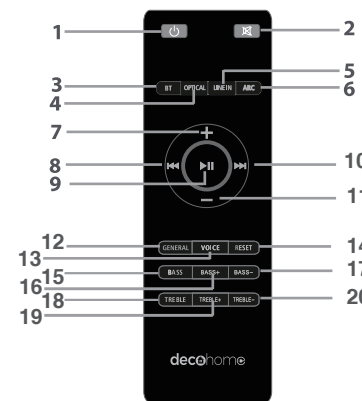
USER MANUAL

Location of controls



- [POWER] button : Power ON/OFF
- [MODE] button : Switch modes
- [M / V-] button : decrease volume / skip to previous track
- [M] button : Play / pause track
- [M / V+] button : increase volume / skip to next track
- [LINE IN 1] Input : Input LINE IN 1
- [LINE IN 2] Input : Input LINE IN 2
- [OPTICAL] : Input OPTICAL
- [ARC] : ARC jack
- [DC-14V] : DC 14V IN jack

REMOTE CONTROL

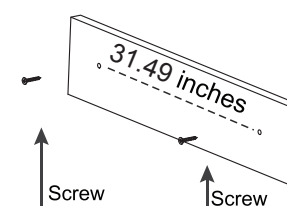


- [⏻] Key: Standby Power ON/OFF
- [🔇] Key: Mute volume
- [BT] Key: BT mode
- [OPTICAL] Key: OPTICAL mode
- [LINE IN] Key: LINE IN mode
- [ARC] Key: ARC mode
- [+] Key: Increase volume
- [⏪] Key: Skip to previous track
- [⏩] Key: Play/pause music
- [⏭] Key: Skip to next track
- [-] Key: Decrease volume
- [GENERAL] Key: GENERAL mode
- [VOICE] Key: VOICE mode
- [RESET] Key: Restore settings
- [BASS] Key: BASS mode
- [BASS+] Key: Increase BASS volume
- [BASS-] Key: Decrease BASS volume
- [TREBLE] Key: TREBLE mode
- [TREBLE+] Key: Increase TREBLE volume
- [TREBLE-] Key: Decrease TREBLE volume

NOTE: Remote battery type 3xAAA NOT INCLUDED.

Mounting the speaker

- Measure a width of 31.49 inches on the wall.
- Mark the position of the mounting screws on the wall using a pencil.
- Drill the supplied screws directly into the marks that you have made on the wall and leave approximately 0.3 inch length to hook the Wireless Sound Bar.
- Put the Wireless Sound Bar onto the mounting screws. Make sure they are firm and stable.



Operation process

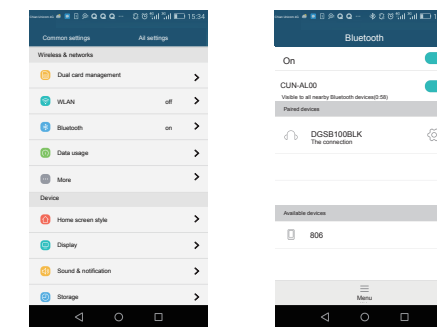
- Connect the DC power cord into a wall socket.
- Turn the speaker on by pressing the [POWER] button on the speaker or the [⏻] button on the remote control.

3.1 Bluetooth mode operation

- 3.1.1 Press the [MODE] button on the speaker or the [BT] button on the remote control. When 13[BT] bluetooth indicator lights flash blue and a "drip" sound is heard, then go into bluetooth pairing mode.
- 3.1.2 During the pairing process, keep the speaker and bluetooth device within 10 meters of each other.
- 3.1.3 Set your phone or other bluetooth device to bluetooth status.

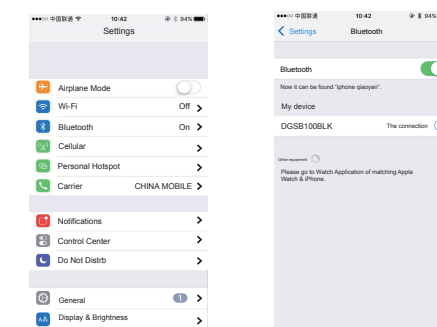
Bluetooth Connection Method for Android system:

1. Go to SETTINGS> BLUETOOTH(make sure bluetooth is turned ON)
2. When your bluetooth enabled device finds the speaker, select "DGSB100BLK" from the list of found devices. When succeeding pairing, you will hear "beep beep". 13[BT] bluetooth indicator light appears normally on. When playing music, the blue led light will light always.



Bluetooth Connection Method for iPhone IOS system:

1. Go to SETTINGS> BLUETOOTH(make sure bluetooth is turned ON)
2. When your bluetooth enabled device finds the speaker, select "DGSB100BLK" from the list of found devices. When paired successfully, you will hear "beep beep". 13[BT] bluetooth indicator light appears on. When playing music, the blue led light will light always.



3.2 Optical/ARC mode operation

- 3.2.1 Please insert one connection port of OPTICAL fiber into the 8 [OPTICAL] fiber input jack or one connection port of ARC fiber into the 9[ARC] fiber input jack first, and then insert another connection port into the socket of media playback device.
- 3.2.2 Press the [MODE] button on the speaker or the [OPTICAL] or [ARC] button on the remote control. When 12 [OPT/ARC] indicator lights up red light, then enter the Optical mode state. When 12 [OPT/ARC] indicator lights up blue light, then enter the ARC mode state.

NOTE: Prior to usage, please make sure your TV has optical output. Then turn on PCM settings of your TV when connected in optical mode in case it doesn't have sound.

3.3 LINE IN mode operation

- 3.3.1 Insert one of the connection ports of the audio cable into the 6[LINE IN 1] jack, and then insert another connection port into the socket of the media playback device.
- 3.3.2 Press the [MODE] button on the speaker or the [LINE IN] button on the remote control. When 11[LINE IN 1/2] indicator lights up red light, enter LINE IN 1 state.
- 3.3.3 Insert one of the connection ports of the audio cable into the 7[LINE IN 2] jack, and then insert another connection port into the socket of the media playback device.
- 3.3.4 Press the [MODE] button on the speaker or the [LINE IN] button on the remote control. When 11[LINE IN 1/2] indicator lights up blue light, enter LINE IN 2 state.

NOTE: Prior to usage, please make sure your TV has AUX output in case it doesn't have sound.

3.4 Volume control operation

- 3.4.1 Short press the [M / V-] button on the speaker or press the [-] button on the remote control to decrease the volume.
- 3.4.2 Short press the [M / V+] button on the speaker or press the [+] button on the remote control to increase the volume.
- 3.4.3 Press the [TREBLE-] button on the remote control to decrease the treble volume.
- 3.4.4 Press the [TREBLE+] button on the remote control to increase the treble volume.
- 3.4.5 Press the [BASS-] button on the remote control to decrease the bass volume.
- 3.4.6 Press the [BASS+] button on the remote control to increase the bass volume.

3.5 Skipping and play/pause Songs operation

- 3.5.1 Long press the [M / V-] button on the speaker or press the [⏪] button on the remote control to skip to the previous song.
- 3.5.2 Long press the [M / V+] button on the speaker or press the [⏩] button on the remote control to skip to the next song.
- 3.5.3 Press the [⏩] button on the speaker or the remote control to play or pause music.

Specification

- Soundbar size : 940*70*74mm
- Bass size : 160*282*280mm
- BT working distance : 10m
- S/N : ≥65db
- BT IC : CW6693
- Output power : 60W
- Power DC : DC 14V/2A*2
- Frequency Response : 80Hz~18KHz
- Distortion : ≤1%
- Driver Size : 2.5"2 + 5.25"

Malfunction analysis:

Consult the after-sale service for help.

Legal information:

Any copy, changes or modifications of the user manual not expressly approved unless dealer's permission.

Caution:

1. Do not take this apparatus apart or repair it.
2. Do not use this apparatus near water and humidity.
3. Clean only with a dry cloth.

Limited Warranty:

You may within 1 year from your original date of purchase return it to the authorized service for repair.

Cautions and warnings:

1. Do not use the bluetooth speaker near water or humidity; do not use the device near the bathtub, water tank, swimming pool and so on.
2. Do not install the bluetooth speaker in an extreme hot or cold environments.
3. Do not expose the device in the sunshine directly.
4. Do not use the device near fire, such as, stove, candle or fireplace and so on.
5. Do not use abrasive cleaning solvents to clean the bluetooth speaker.

This device complies with part 15 of the FCC Rules. Operation is subject to the following two conditions: (1) this device may not cause harmful interference, and (2) this device must accept any interference received, including interference that may cause undesired operation.

decohome

Manufacturer's 1-Year Limited Warranty

The manufacturer warrants that all parts and components are defect free in materials and workmanship for 1 year. This warranty is valid only in accordance with the conditions set forth below:

1. The warranty extends only to the original consumer purchaser and is not transferable. In addition, proof of purchase must be demonstrated.
2. This limited warranty is the only written or express warranty given by the manufacturer. Any implied warranty of merchantability or fitness for a particular purpose on this product is limited in duration to the duration of this warranty. Some states do not allow limitations on how long an implied warranty lasts, so the above limitation may not apply to you.
3. This warranty gives you specific legal rights. You may also have other rights which vary by state.

Procedure for Replacement or Return within the 1 Year:

To return the product for replacement or refund within the 1 year, the original purchaser must pack the product securely and send it postage paid with a description of the reason for replacement or refund, proof of purchase, and include your order number on the package, to the following address:

Deco Home
80 Carter Drive
Edison, NJ 08817

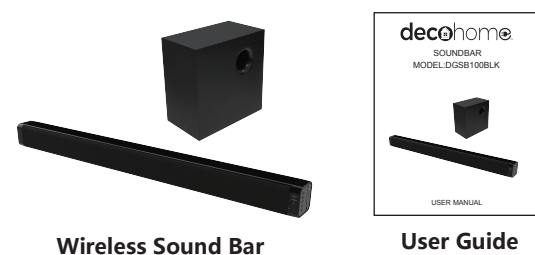
备注：送大货样，工程部确认尺寸、颜色及丝印内容后方可做大货

| | |
|---|-----------|
| 生产单号: | 型号:D-36PW |
| 料号: 416-D36PW091-03R | 物料名称: 说明书 |
| 其它要求: 105g铜版纸, 黑白印刷 需按要求折叠, 折叠后成品尺寸: 85*110mm 内容以工程承认样品为准 | |
| 美 工 | 结 构 |
| 电 子 | 审 核 |

折线

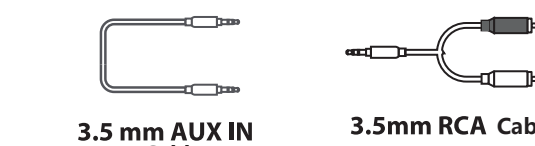
折线

In the box



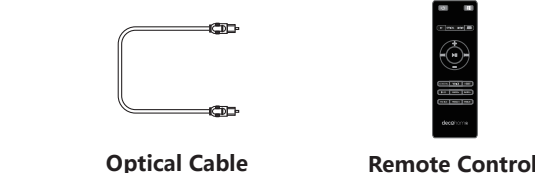
Wireless Sound Bar

User Guide



3.5 mm AUX IN Cable

3.5mm RCA Cable



Optical Cable

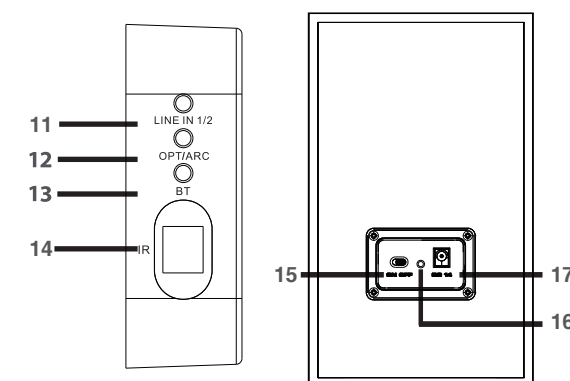
Remote Control



2 Screws

Adapter

FRONT PANEL SUBWOOFER BACK PANEL



- 11.[LINE IN 1/2] : Input LINE IN 1 LED indicator light (Red lights) / Input LINE IN 2 LED indicator light (Blue lights)
- 12.[OPT/ARC] : OPTICAL LED indicator light (Red lights) / ARC LED indicator light (Blue lights)
- 13.[BT] : BT LED indicator light (The flashing blue lights)
- 14.[IR] : Infrared remote control receiver
- 15.[ON/OFF]Power ON/OFF
- 16.Connection indicator light(Blue lights)
- 17.[DC 14V]DC 14V IN jack

Wireless Subwoofer Connection

First plug in the DC power supply, then press the switch. When the soundbar and the subwoofer are plugged in and powered on, the wireless subwoofer will automatically connect to the soundbar.