

DGMIC1G User Guide

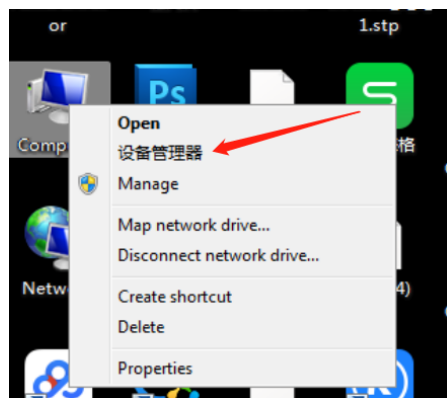
A. FAQ

1. Deco Gear does not recommend using the microphone output to external speakers which can damage hardware, cause poor recording, and interference.
2. The audio jack is designed for a 3-pin headphone plug. Some 4-pin headphone plugs won't be compatible.
3. Please make sure the headphone plug is fully inserted into the microphone.
4. Please use the provided cable or other high-quality cable to connect. Inferior cables will affect performance and, in some cases, the microphone will not work.
5. Notice: We suggest to not use a USB hub or the front USB port on PC to avoid performance issues
6. The microphone should be placed upright, as shown below. Do not tilt in order to achieve the best pickup direction.



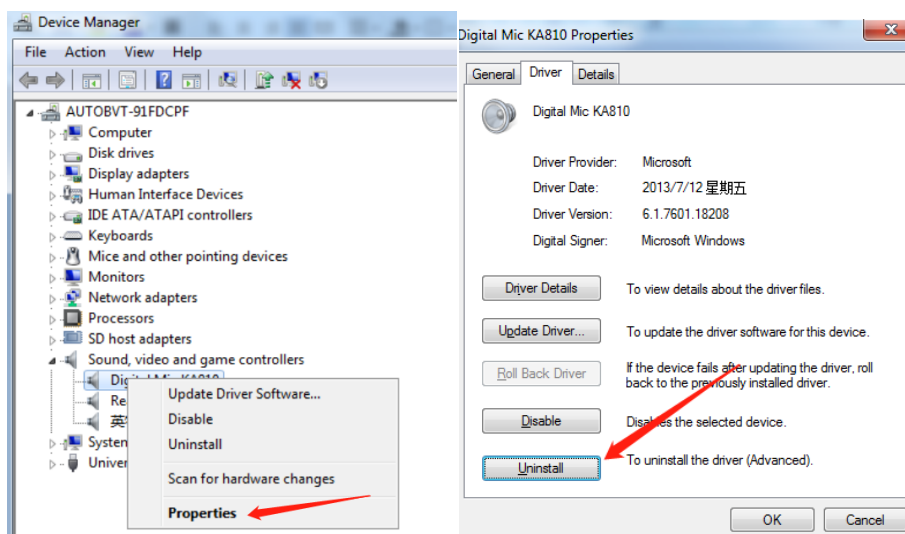
7. When the microphone isn't recognized on your PC, please take the following steps:

1) Open the device manager of PC (if you cannot find the device manager, you can find it in Properties)










2) Find the unrecognized microphone under sound, video, and game controllers

3) Open the unrecognized microphone properties, and uninstall the driver on driver tab;



4) Unplug the microphone and wait for about 10 seconds, then reconnect to the PC

OLED display for patterns and Gain and Volume levels


Pattern	Cardioid	Stereo	Bi-directional	Omni-directional	Mute	Volume Level	Gain Level
Icon							

7. In order to prevent the OLED display interference, the OLED display will enter into standby mode and turn off based on without knob operation for 15 seconds. The OLED display will start again by rotating any knob or pressing mode knob.

8. In order to get best pickup effects, please select appropriate recording pattern for different occasions:

Recording Pattern	Occasions			
Cardioid	Streaming	Podcasts	Voiceover	Instruments
Omni-directional	Conference	Events		
Bi-directional	Vocal	Instruments		
Stereo	Interview	Instruments	Duet	

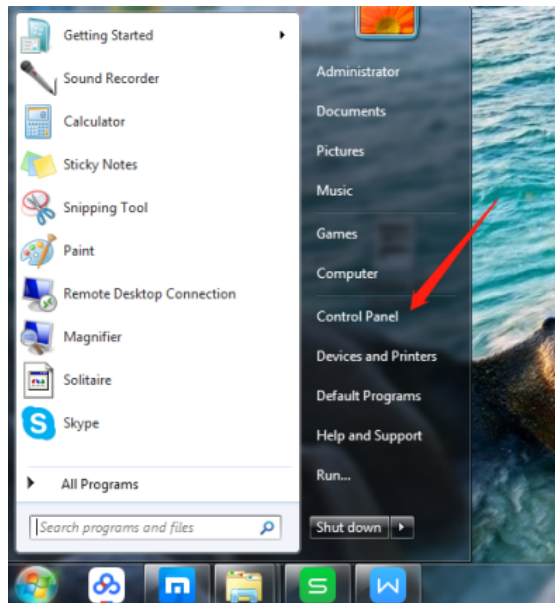
9. LED light effects

mode Switching	Description for changes	Description for light color
Long press for	Press	
Dynamic light effects	Rainbow(default mode)	Rainbow color changing
	Dynamic Breathing	6 colors(Yellow, red,blue,green,pink,blue) cycling breathing
	Dynamic flashing	6 colors(Yellow, red,blue,green,pink,blue) dynamic flashing
	RGB running light,left	6 colors(Yellow, red,blue,green,pink,blue) running left
	RGB running light,right	6 colors(Yellow, red,blue,green,pink,blue) running ring

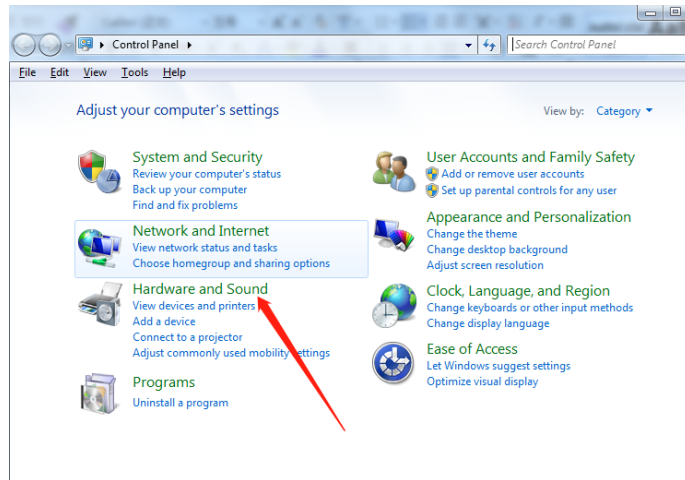
	Rainbow flow	Rainbow color flow
Single light always on	single color switching	6 colors(Yellow, red,blue,green,pink,blue),single color always on
Single light flashing	single color switching	6 colors(Yellow, red, blue,green,pink,blue),single color flashing
Single light breathing	single color switching	6 colors(Yellow, red, blue,green,pink,blue),single color breathing
turn off	/	all light off

B. Setup for Windows OS

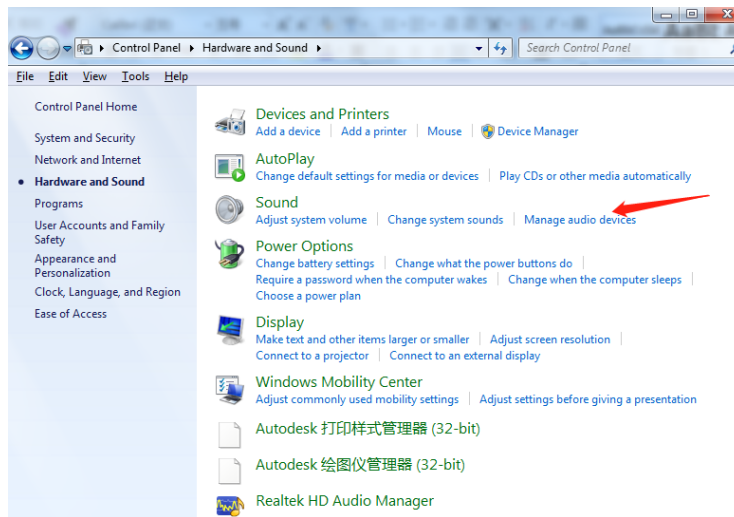
1. Use the provided USB cable and Plug the microphone into a USB port into your computer directly;
(Notice: We suggest to avoid using USB hub or front USB port to avoid affecting performance)
2. Open the control panel from Start Menu



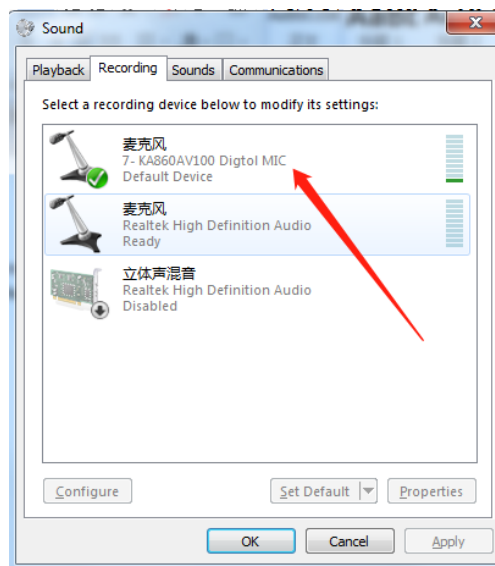
3. Select Hardware and Sound from the control panel



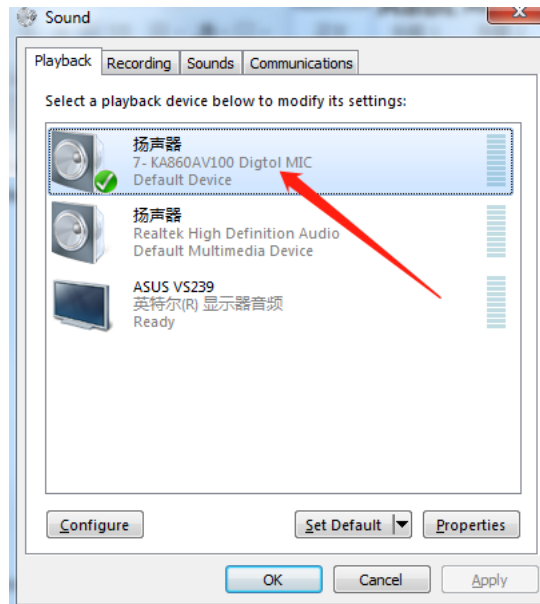
4. Select Manage audio devices from Hardware and Sound menu



5. Select the recording tab, and select microphone KA860 as default device



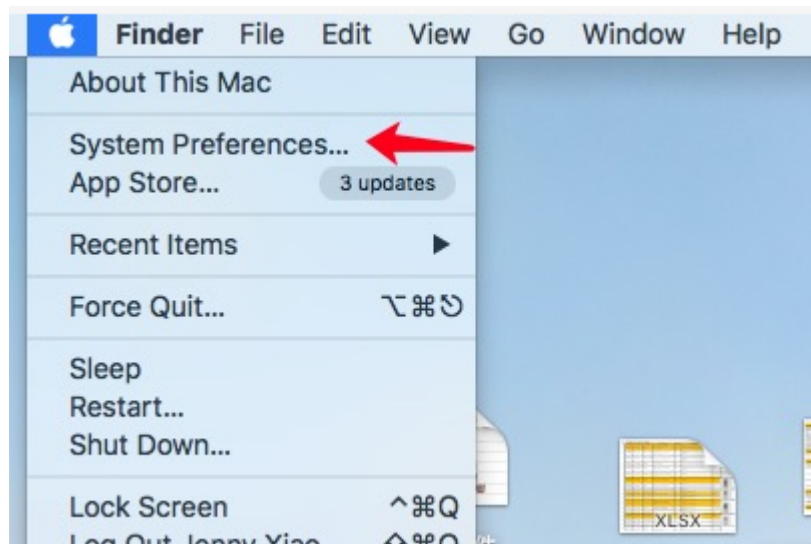
6. Select the playback, and select microphone KA860 as default device



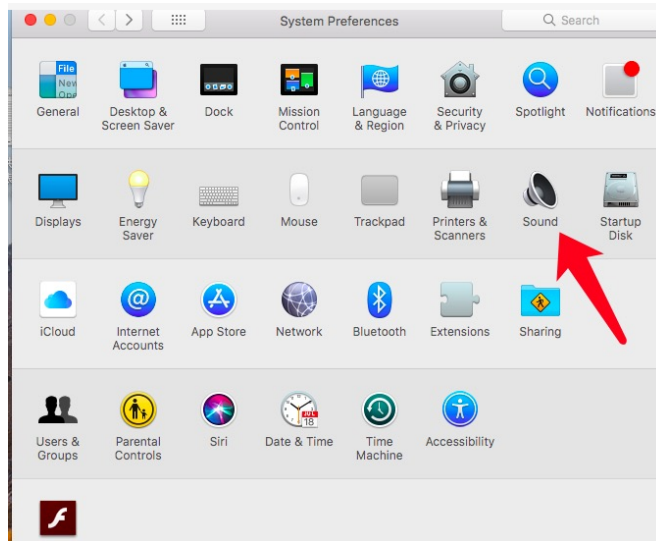
7. Then adjust needed recording Mode/Gain/ Output Volume from Microphone

C. Setup for MAC OS

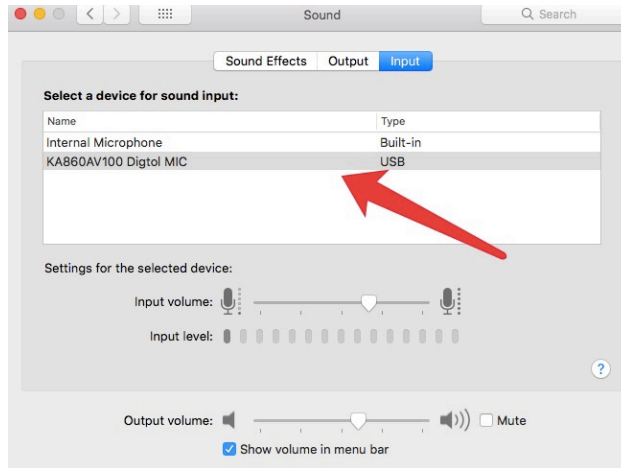
1. Open system preferences



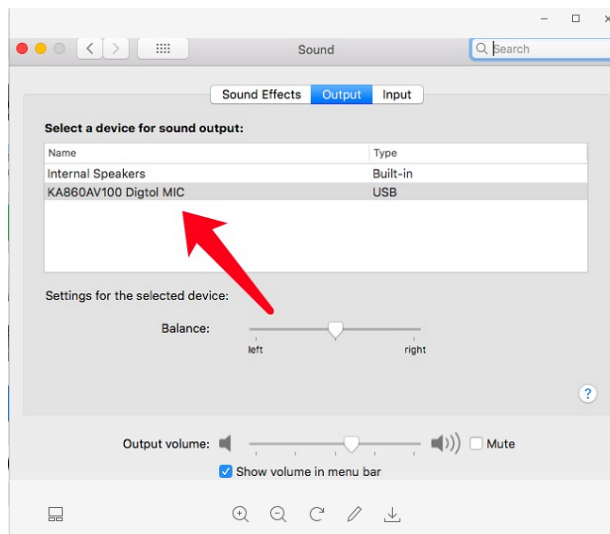
2. Select Sound from sound preferences
-



3. Select microphone KA860 on input tab



4. Select Microphone KA860 on output tab



5. Then adjust needed recording Mode/Gain/ Output Volume from Microphone.

This device complies with part 15 of the FCC Rules. Operation is subject to the following two conditions: (1) this device may not cause harmful interference, and (2) this device must accept any interference received, including interference that may cause undesired operation. Any changes or modifications not expressly approved by the party responsible for compliance could void the user's authority to operate the equipment.

NOTE: This equipment has been tested and found to comply with the limits for a Class B digital device, pursuant to Part 15 of the FCC Rules. These limits are designed to provide reasonable protection against harmful interference in a residential installation. This equipment generates, uses and can radiate radio frequency energy and, if not installed and used in accordance with the instructions, may cause harmful interference to radio communications. However, there is no guarantee that interference will not occur in a particular installation. If this equipment does cause harmful interference to radio or television reception, which can be determined by turning the equipment off and on, the user is encouraged to try to correct the interference by one or more of the following measures: -- Reorient or relocate the receiving antenna. Increase the separation between the equipment and receiver. Connect the equipment into an outlet on a circuit different from that to which the receiver is connected. Consult the dealer or an experienced radio/TV technician for help. The device has been evaluated to meet general RF exposure requirement. The device can be used in portable exposure condition without restriction.



Manufacturer's 1-Year Limited Warranty

The manufacturer warrants that all parts and components are defect free in materials and workmanship for 1 year. This warranty is valid only in accordance with the conditions set forth below:

1. The warranty extends only to the original consumer purchaser and is not transferable. In addition, proof of purchase must be demonstrated.
2. This limited warranty is the only written or express warranty given by the manufacturer. Any implied warranty of merchantability or fitness for a particular purpose on this product is limited in duration to the duration of this warranty. Some states do not allow limitations on how long an implied warranty lasts, so the above limitation may not apply to you.
3. This warranty gives you specific legal rights. You may also have other rights which vary by state

Procedure for Replacement or Return within the 1 Year:

To return the product for replacement or refund within the 1 year, the original purchaser must pack the product securely and send it postage paid with a description of the reason for replacement or refund, proof of purchase, and include your order number on the package, to the following address:

Deco Gear
80 Carter Drive
Edison, NJ 08817