

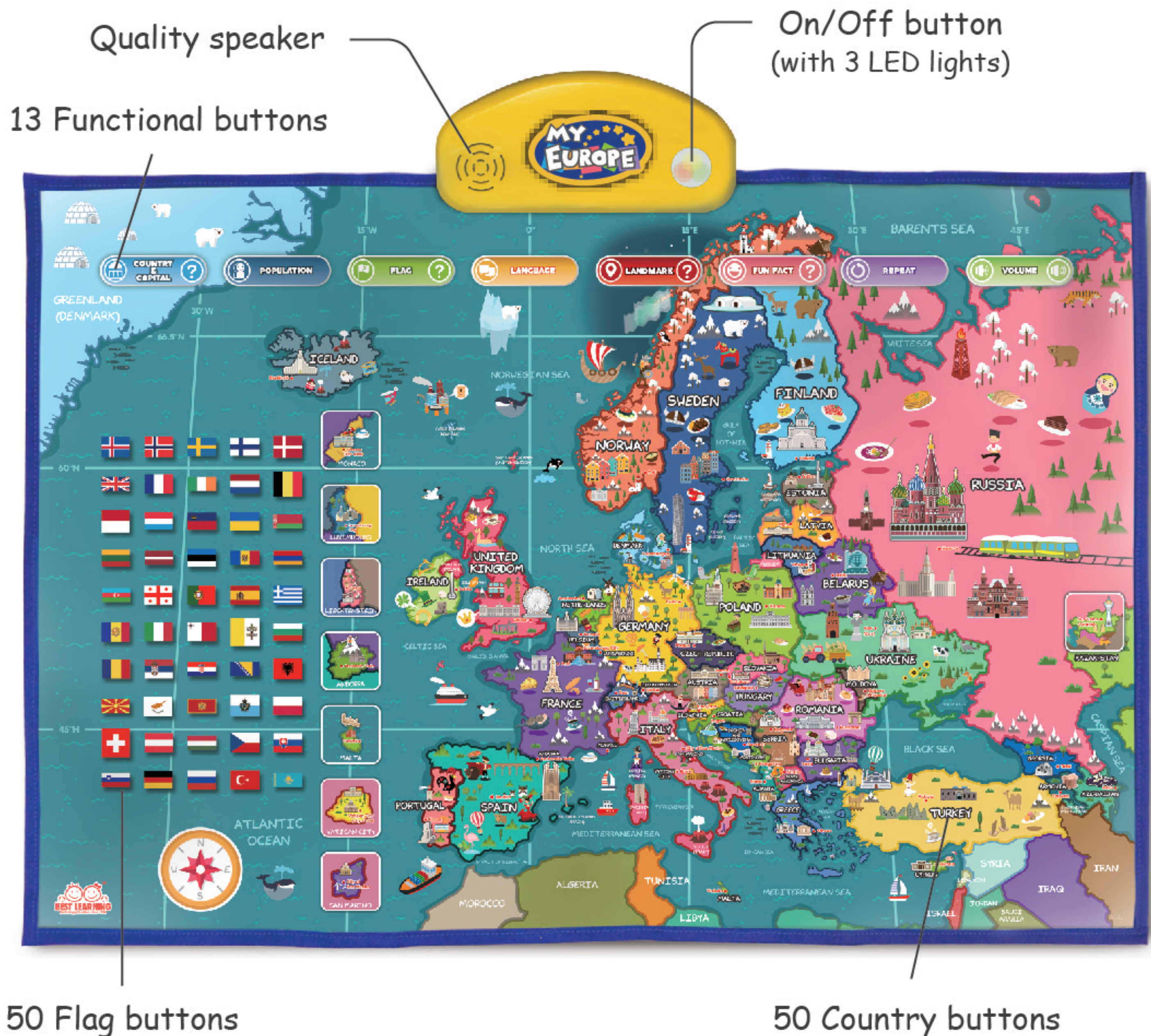
# MY EUROPE

**i-Poster**

## Interactive Map

### INTRODUCTION

Explore Europe with your fingertips. Learn about 50 countries, capital cities, flags, populations, languages spoken in each country, landmarks, and fun facts with **i-Poster: My Europe**. (5+ years)



# INCLUDED IN THIS PACKAGE

- 1 **i-Poster: My Europe**

## ADVICE

- **DO NOT FOLD** this product.
- For best performance, please spread the poster out flat on the floor, and place the packaging box on it over night to flatten the poster.
- For best performance, please make sure to turn the unit OFF before inserting or removing batteries. Otherwise, the unit may malfunction.
- All packing materials, such as tape, plastic, sheets, packaging locks, wire ties and tags are not part of this toy, and should be discarded for your child's safety.
- Please keep this user's manual as it contains important information.
- Please protect the environment by not disposing of this product with household waste.

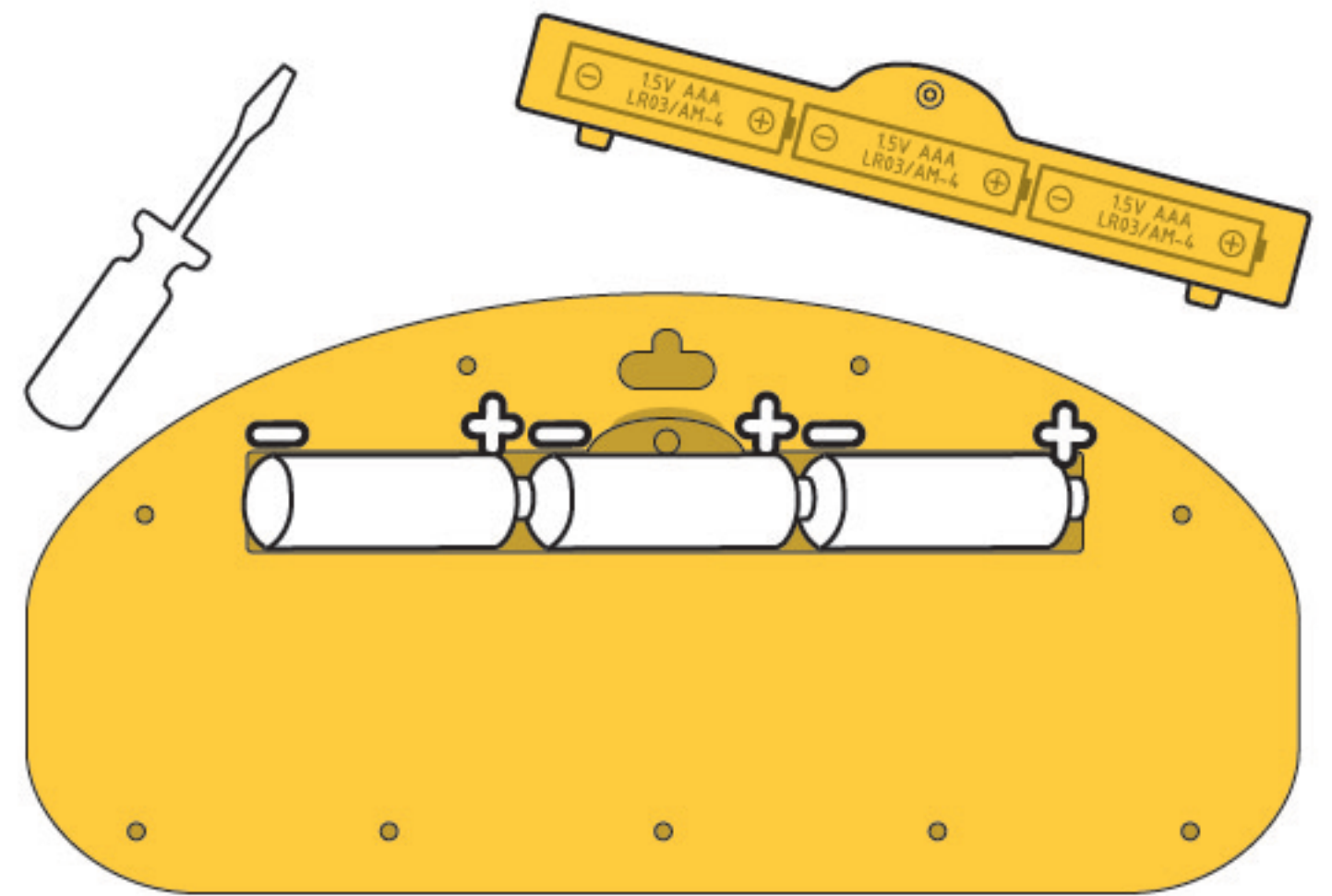
## GETTING STARTED

Take the **i-Poster** out of the storage slot.

### Battery Installation

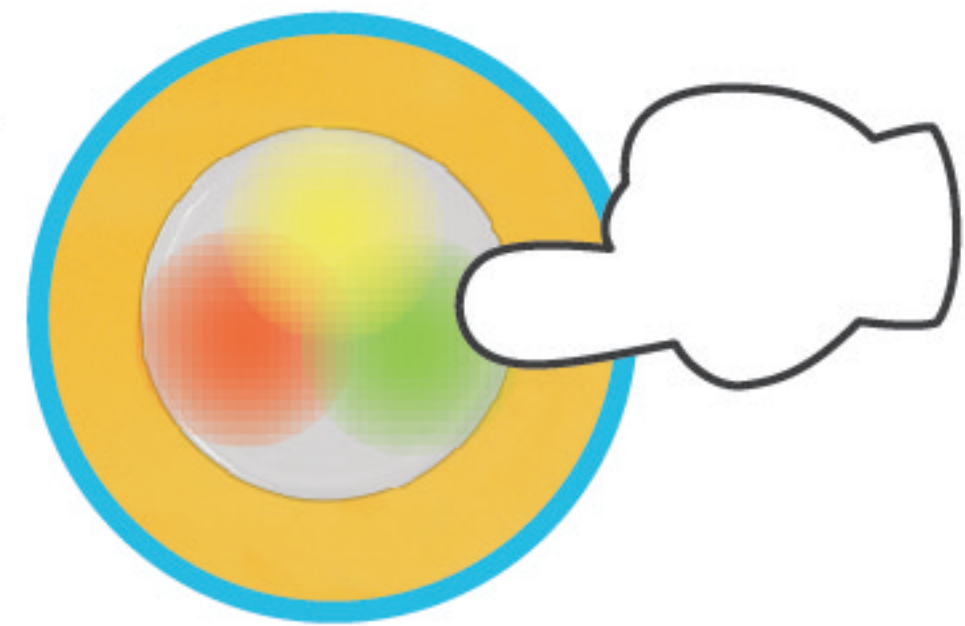
The **i-Poster** operates on 3 AAA (LR03) batteries:

1. Locate the battery cover of the unit and open it with a screwdriver.
2. Insert 3 AAA (LR03) batteries as illustrated.
3. Close the battery cover and screw it back.



### Start Playing

1. Press the ON/OFF button to turn ON.
2. Select any one of functional buttons to play.
3. Follow the instruction then ENJOY IT!
4. To turn OFF, just press the ON/OFF button again.



## SLEEP MODE

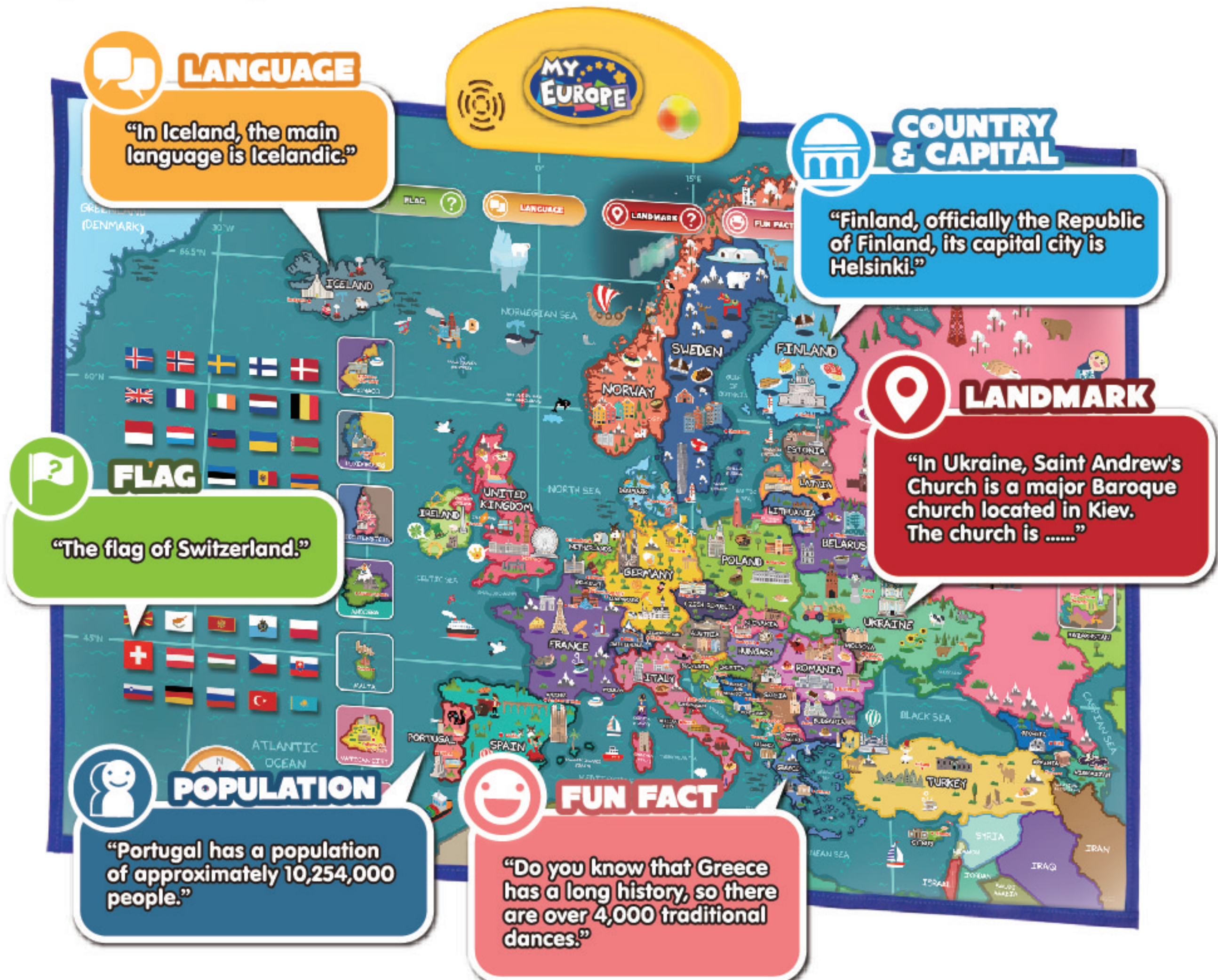
1. If the **i-Poster** is not active for more than 2 minutes, it will automatically shut OFF. Press any button to turn it back ON.
2. We recommend turning the unit OFF when done playing with it.

# HOW TO PLAY

1. Select a mode of the functional buttons to begin.



2. Then press any of the active buttons to learn.



# 13 FUNCTIONAL BUTTONS

Learn about each country and its capital city.

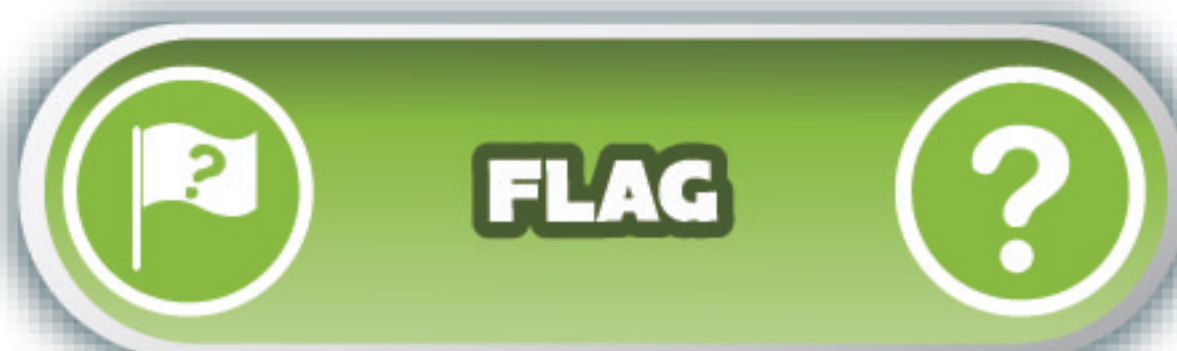


Country and capital quiz.

Learn about the population of each country.



Learn about each country's flag.



Flag quiz.

Learn about the language(s) spoken in each country.



Learn about the important landmark of each country.

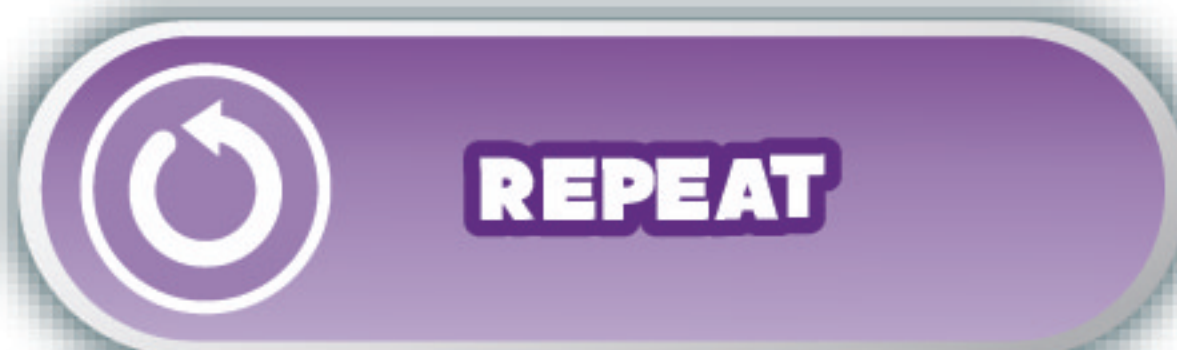


Landmark quiz.

Learn a fun fact of each country.



Repeats the previous statement.



Decrease volume.



Increase volume.

# QUIZ MODES HINTS

## Hint 1:

If you answer incorrectly, it will repeat the same question with a hint. You have three tries to answer correctly.

## Hint 2:

Don't forget to press the repeat button if you want to hear the question or the hint again.

# COUNTRY LIST

(01) Albania (02) Andorra (03) Armenia (04) Austria (05) Azerbaijan  
(06) Belarus (07) Belgium (08) Bosnia and Herzegovina (09) Bulgaria  
(10) Croatia (11) Cyprus (12) Czech Republic  
(13) Denmark (14) Estonia (15) Finland (16) France  
(17) Georgia (18) Germany (19) Greece  
(20) Hungary (21) Iceland (22) Ireland (23) Italy (24) Kazakhstan  
(25) Latvia (26) Liechtenstein (27) Lithuania (28) Luxembourg  
(29) Malta (30) Moldova (31) Monaco (32) Montenegro  
(33) Netherlands (34) North Macedonia (35) Norway  
(36) Poland (37) Portugal (38) Romania (39) Russia  
(40) San Marino (41) Serbia (42) Slovakia (43) Slovenia  
(44) Spain (45) Sweden (46) Switzerland  
(47) Turkey (48) Ukraine (49) United Kingdom (50) Vatican City

# ACTIVE BUTTONS

**MONACO**

Country buttons



Flag buttons



Functional buttons

# INACTIVE ICONS

The country names without black border are inactive.



## CARE AND MAINTENANCE

- Keep product away from foods and beverages.
- Clean with a slightly damp cloth (cold water) and mild soap.
- Never submerge the product in water.
- Remove batteries during prolonged storage.
- Avoid exposing product to extreme temperatures.

## BATTERY SAFETY

- Batteries are small parts and choking hazards to children, must be replaced by an adult.
- Follow the polarity (+/-) diagram in the battery compartment.
- Promptly remove dead batteries from the toy.
- Dispose of used batteries properly.
- Remove batteries from prolonged storage.
- Only batteries of the same type as recommended are to be used.
- **DO NOT** incinerate used batteries.
- **DO NOT** dispose of batteries in fire, as batteries may explode or leak.
- **DO NOT** mix old and new batteries.
- **DO NOT** mix alkaline, standard (carbon-zinc) or rechargeable (Ni-Cd, Ni-MH) batteries.
- **DO NOT** recharge non-rechargeable batteries.
- **DO NOT** short-circuit the supply terminals.
- Rechargeable batteries are to be removed from the toy before being charged.
- Rechargeable batteries are only to be charged under adult supervision.

## TROUBLESHOOTING

Symptom	Possible Solution
Toy does not turn ON or does not respond.	<ul style="list-style-type: none"><li>• Make sure batteries are correctly installed.</li><li>• Make sure battery cover is secured.</li><li>• Remove batteries and put them back in.</li><li>• Clean battery compartment by rubbing lightly with a soft eraser and then wiping with a clean dry cloth.</li><li>• Install new batteries.</li></ul>
Toy makes strange sounds, behaves erratically or makes improper responses.	<ul style="list-style-type: none"><li>• Clean battery contacts per above instructions.</li><li>• Install new batteries.</li></ul>

CONFORMS TO  
CE EN71  
UKCA  
ASTM F963

Item No. 4222

