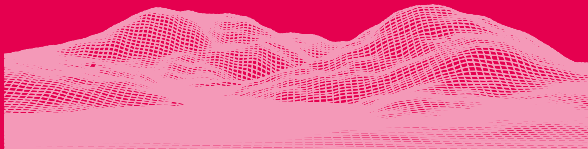


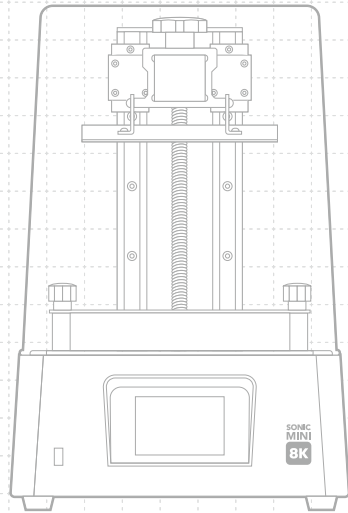


SONIC
MINI
8K



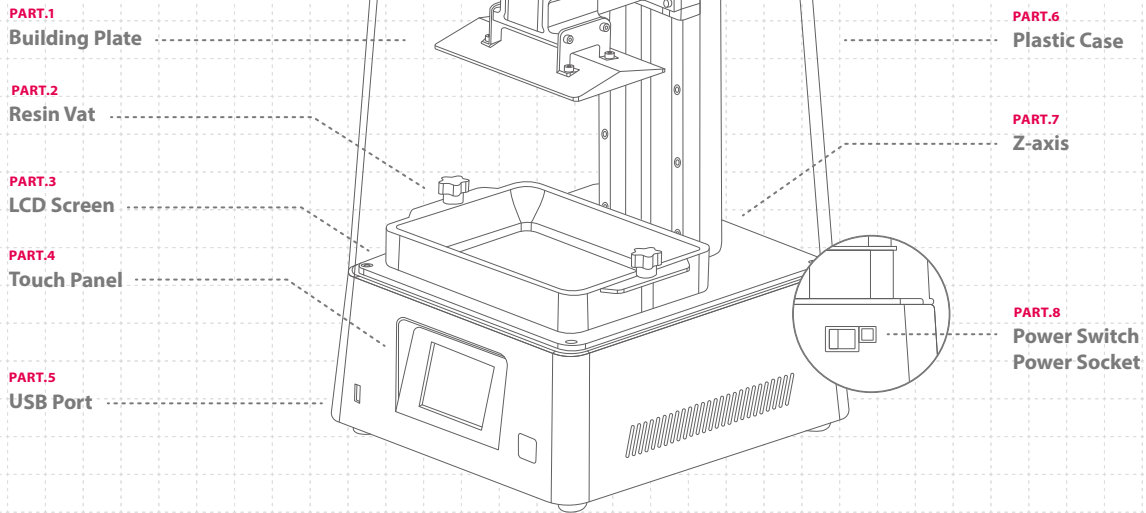
Dear User,

Thank you for joining us. Please read the Sonic Mini 8K manual thoroughly and follow the instructions step by step to get the best printing experience.



01 Introduction

Printer Parts



The Toolbox



After Sales Service Card



Gloves



Power Adapter



Plastic Funnel



Scrapers



Allen Wrench



USB

Operation

System	Phrozen OS
Operation	3.5 inch Touch Panel
Slicer Software	CHITUBOX V1.9.0 or above
Connectivity	Front USB Port

Printing Specifications

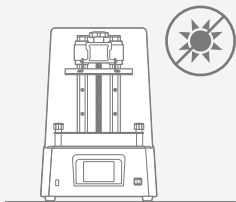
Technology	Resin 3D Printer - LCD Type
Light Source	Linear Projection LED Module
XY Resolution	22 μ m
Layer Thickness	0.01-0.30 mm
Max Printing Speed	80 mm / hr
Power Requirement	DC 24V ; 3A

Hardware Specifications

Printer Size	29 x 29 x 43 cm
Printing Volume	16.5 x 7.2 x 18 cm
Printer Weight	13 kg

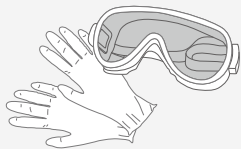
* All specifications have been tested in a laboratory. Please note that certain specifications may be subject to change without prior notice.

02 Key Notes Before Start



Stable Printing Environment

Store your 3D printer in a dry and ventilated environment. Avoid exposure to direct sunlight. Make sure to place the printer on a flat surface.



Protective Measures

While printing and using resin, please make sure to wear gloves, masks, protective goggles, and long-sleeved clothing.

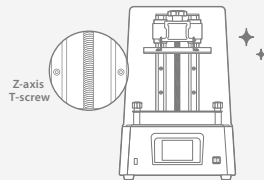
Maintenance

Clean the Z-axis

First, dry clean the Z-axis T-screw. Then apply a thin layer of general lubricant on it, so that it whirls smoothly.

Clean the 3D Printer

Use sanitizing alcohol and tissue paper to carefully clean the printer, the resin vat, and the building plate.

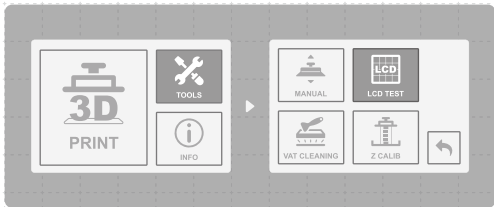


03 Prepare Your 3D Printer

For first-time use, please thoroughly follow the steps down below to calibrate your Z-axis and conduct the LCD Test so that your 3D printer is ready.

LCD Test

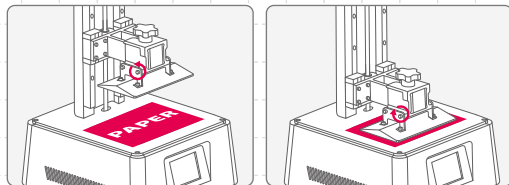
- 1 Click on TOOLS. Then click on LCD TEST.
- 2 Check to see if the LCD screen displays the same image as seen on the touch panel.
- 3 When the LCD screen clearly displays the image, the LCD TEST is complete.



*Please refer to the actual printer operation based on the touchscreen display.

Z-axis Calibration

- 1 Click on TOOLS. Then click on Z CALIB.
- 2 Remove the resin vat. Place a piece of A4 paper on the LCD. Unscrew 4 screws on the sides of the building plate.
- 3 Wait until the building plate touches the LCD screen.
- 4 Then tighten all 4 screws. Tug the paper to make sure it can't be moved easily. Click DONE to finish calibration.
- 5 Wait until the building plate retracts to the TOP. Z-axis Calibration is now complete.



04 Perform the Printing Test

After conducting the Z-axis Calibration and LCD TEST, let's move on to the Printing Test.

Prepare Your 3D File

- 1 On your computer, import the STL file to CHITUBOX V1.9.0 or above.
- 2 Click on Settings to add a new printer "Sonic Mini 8K." Set your Print Parameters according to the resin you will use.
- 3 Slice the 3D file and save it as CTB file, then import it onto your USB.



Download Slicer



Resin Profile

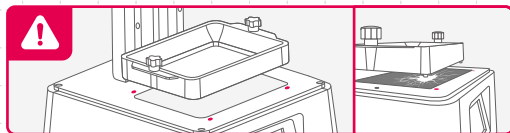
Want to have the best print performance? Then check out our recommended resin profiles now.

Printing Test

- 1 Please make sure the bottom screws of the resin vat

are perfectly aligned with the platform grooves, then tighten the screws on both sides. When placing the resin vat, please pay attention to the bottom screws and **DO NOT** damage the LCD screen.

- 2 Shake the resin bottle for 1 minute. When pouring, make sure the resin does not exceed the max fill line on the resin vat.
- 3 Insert your USB into Sonic Mini 8K. Choose the file and click GO to begin printing.
- 4 Keep the plastic case closed during printing to prevent exposure to excessive UV light.
- 5 After printing, carefully remove the building plate and then tilt and place it onto a desk or a flat surface. Use a metal scraper to carefully remove your print.



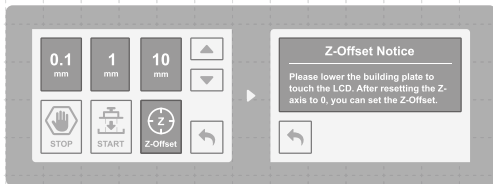
Use the Z-Offset Function to Reposition the Z-axis

After calibrating the Z-axis, you can use this function to modify your Z-axis zero position, if needed. Use this function if you are looking to print flat on the building plate or if the resin flow is slow.

Click the following buttons on the touchscreen:

TOOLS > MANUAL > START > 0.1mm up or down > Z-offset > SET

Tips: If you restart the printer, the device will be reset to its original settings.



After-sales service & warranty

- Phrozen offers a one-year warranty for all parts, excluding consumable components such as the LCD screen and FEP film.
- Sonic Mini 8K LCD screen is covered under a 3-month warranty. Please note that this warranty does not cover any damages caused by human factors.
- If you encounter any difficulties, please scan the QR codes down below to contact us.

Contact us!



Congratulations!

You have just completed your first run.
We hope you've had a great experience!

Please follow Phrozen's social media accounts
and subscribe to our YouTube channel to learn
more about printing tips and share information
with the community.



Facebook



Facebook Group
Sonic Mini 8K



YouTube



Instagram

