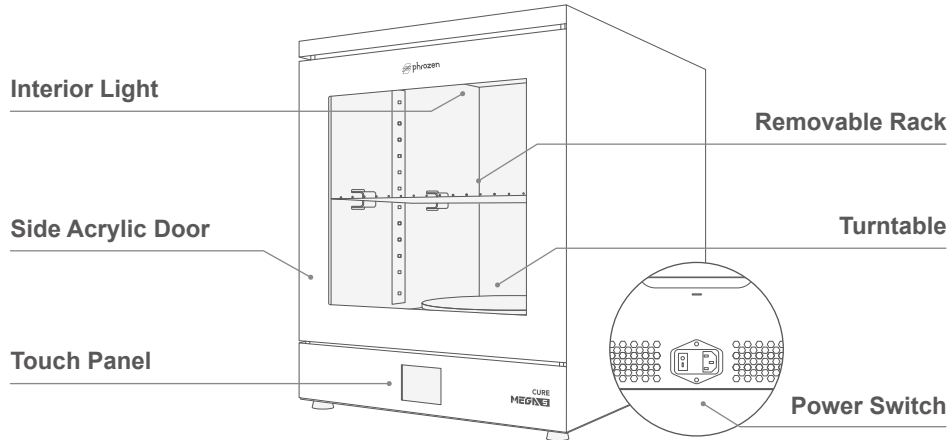




# Phrozen Cure Mega S User Guide

Post-Curing UV Lamp



## Specifications

Product Dimension : 39.5 x 47.5 x 48.6 cm

Maximum Model Size : Ø25 x 30 cm

Fan Speed : 1700 rotations/min

Timer : 1-120 min

Recommended time : Maximum 30 minutes/cycle

Input : AC 100-240 V ; 50/60 Hz

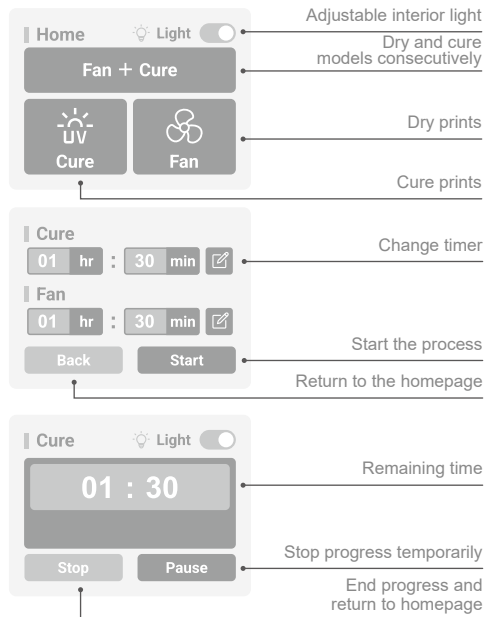
Weight : 15 kg

Rated Power : 70 W

LED Wavelength : 405 nm

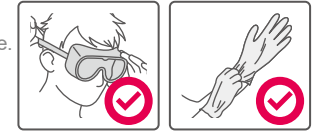
Light intensity : 22000±2000 μw/cm<sup>2</sup>

(measured on the turntable, 10 cm from side LEDs)



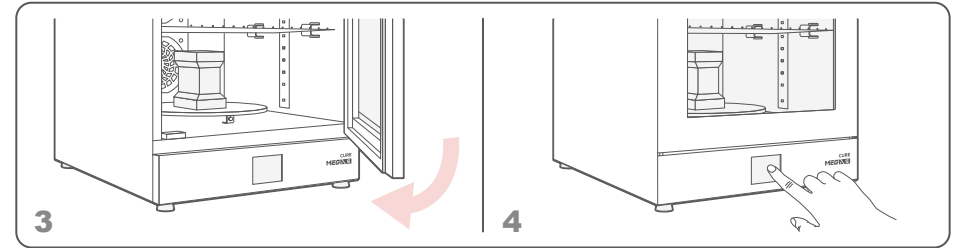
## 01 Before You Start

- Place the machine on a clean and level surface.
- Please make sure to wear protective goggles when handling the machine.
- Remove the rack when drying and curing large models.



## 02 Instructions

- Install the turntable into the machine and connect the power.
- Make sure the models have been thoroughly cleaned without any residual resin before curing.
- Place the model on the turntable or the rack and cover the door before starting the machine.
- Select 「Cure」, 「Fan」, or 「Fan + Cure」 according to your needs.
- To have a better view of the models inside, feel free to turn the interior lights.
- Input the required time and press ENTER. It's recommended to set max. 30 mins/cycle.
- Please remember to take out the model after the curing process ends.



### Note :

- Freshly cured model might get hot; please remove it carefully.
- The recommended curing time of 30 minutes might not be suitable for every resin. Please visit our Users Guide for more information.



User Guide

## Warning

- Disconnect the power cable before performing maintenance.
- DO NOT** open the acrylic door while the machine is running.
- Avoid direct contact with uncured resin and other cleaning fluids to prevent allergies.
- In case of contact with uncured resin and alcohol (cleaning fluid), please rinse immediately with plenty of water.
- The included power cord set packaged with the main unit cannot be used with electrical equipment other than the specified device.



Help Center



Facebook



YouTube



Instagram