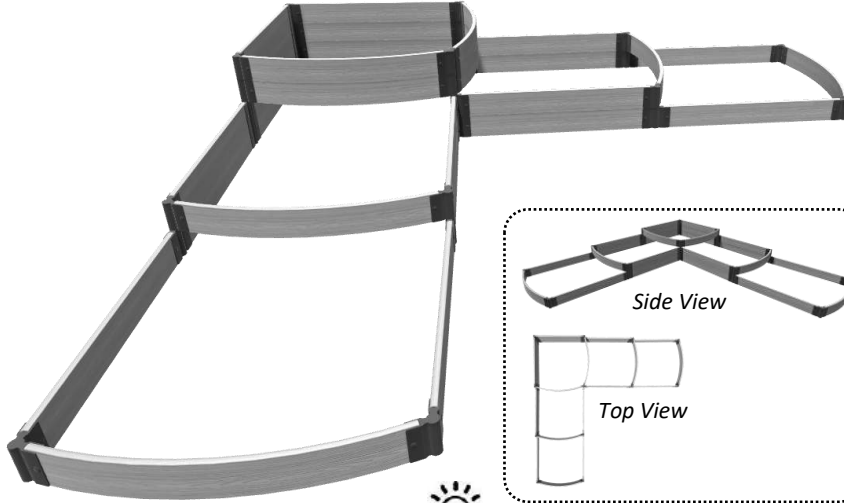


RAISED GARDEN BED

SPLIT WATERFALL TRI-LEVEL



KIT CONTAINS:

- Composite timbers 4' x 20
- Composite timbers 4' x 8 Curved
- Brackets x 56
- **Stakes x 28
- Plugs x 112
- Caps x 12



Layout your timbers along the borderline and connect each timber together by inserting the top of the stake through the bracket loops with the stake pointing to the sky. This enables you to freely position your border to get your desired location.

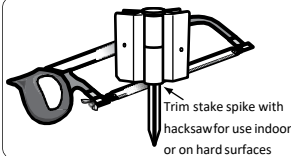
PARTS IDENTIFICATION



Stacking Stake

**NOTE

Stacking stakes can be used on all levels and when creating additional levels. **ONLY** Stacking Stakes can stack!



Trim stake spike with hacksaw for use indoor or on hard surfaces

FOR INDOOR & HARD SURFACE:

If you plan to assemble raised bed on a hard surface, use hacksaw to remove the spike of each stake. Use these cut down stakes for the base level only of your raised garden.

ASSEMBLY INSTRUCTIONS

STEP 1a:

Assemble the timbers by sliding one end of timber into channel end of one of the brackets. Use plugs to cover the holes on both sides to lock the bracket in place.

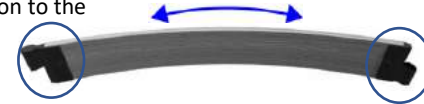


Repeat this process on the opposite end of the timber flipping the bracket in the opposite direction (see image). **Repeat for all straight timbers.**



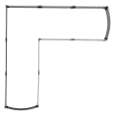
STEP 1b:

Connect brackets to the curved boards in the same way as the straight boards while keeping the bracket pattern consistent with relation to the curve of the board.



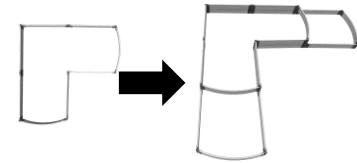
STEP 2:

Layout the base level of your raised garden in a straight "L" shape, using 10 x 4' straight & 2 x 4' curved timbers (on both ends). Insert stake through the hole of the bracket and into each of the corners to lock all sides in place.



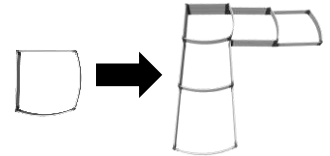
STEP 3:

For the 2nd level, layout the level in a smaller "L" shape, using 6 x 4' straight timbers & 2 x 4' curved timbers (on both ends). Insert stake through the hole of the bracket and into each of the corners to lock all sides in place



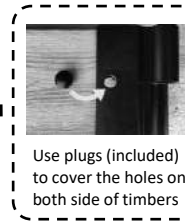
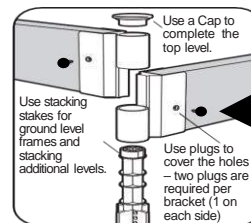
STEP 4:

For the 3rd level, layout the level in a square shape, using 2 x 4' straight timbers & 2 x 4' curved timbers. Insert stake through the hole of the bracket and into each of the corners to lock all sides in place. **Repeat this step for the 4th level.**

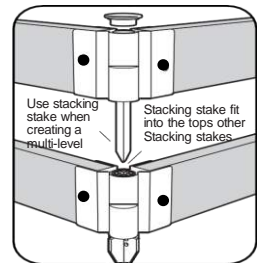


Lastly, add caps to each of the top corner joints to finish off the raised garden.

How the Joints Work



Use plugs (included) to cover the holes on both side of timbers



Use stacking stake when creating a multi-level. Stacking stake fit into the tops other Stacking stakes.