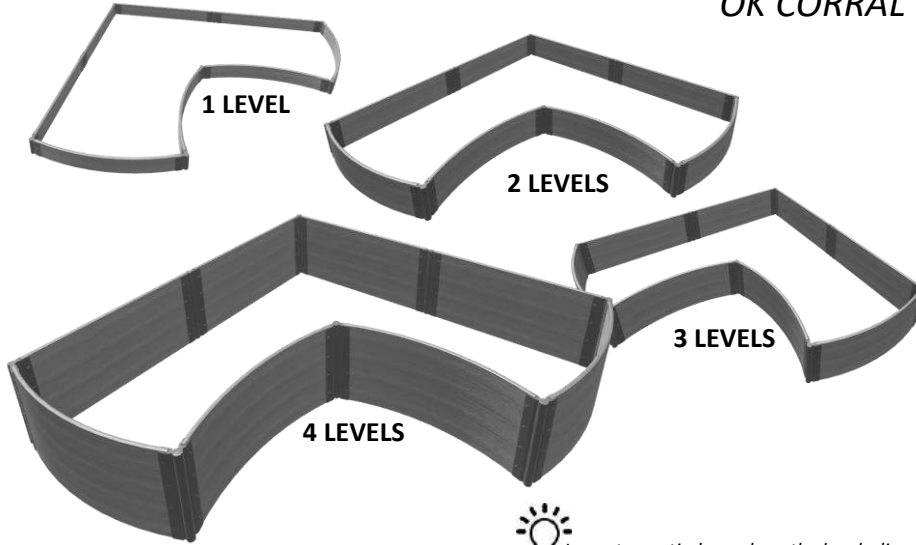


800001016/800002016/800003016/800004016
 800001017/800002017/800003017/800004017
 800001018/800002018/800003018/800004018
 800001019/800002019/800003019/800004019



RAISED GARDEN BED

OK CORRAL



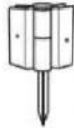
1 LEVEL KIT CONTAINS:

- Composite timbers 4' x 4
- Composite timbers 4' x 4 curved
- Brackets x 16
- **Stakes x 8
- Plugs x 32
- Caps x 8



Layout your timbers along the borderline and connect each timber together by inserting the top of the stake through the bracket loops with the stake pointing to the sky. This enables you to freely position your border to get your desired location.

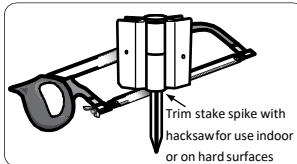
PARTS IDENTIFICATION



Stacking Stake

**NOTE

Stacking stakes can be used on all levels and when creating additional levels. **ONLY** Stacking Stakes can stack!



Trim stake spike with hacksaw for use indoor or on hard surfaces

FOR INDOOR & HARD SURFACE:

If you plan to assemble raised bed on a hard surface, use hacksaw to remove the spike of each stake. Use these cut down stakes for the base level only of your raised garden.

Customer Service: 1800-914-9835 | support@frameitall.com
 © Frame It All. All Rights Reserved.

ASSEMBLY INSTRUCTIONS

STEP 1:

Assemble the timbers by sliding one end of timber into channel end of one of the brackets. Use plugs to cover the holes on both sides to lock the bracket in place.

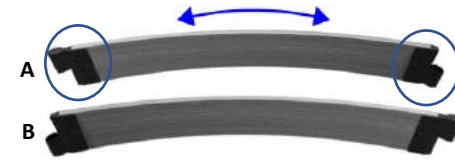


Repeat this process on the opposite end of the timber flipping the bracket in the opposite direction (see image). **Repeat for all straight timbers.**



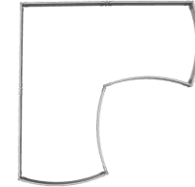
STEP 1b:

Connect 2 curved timbers with the bracket orientation **A** for the outward-curving sections and 2 curved timbers with orientation **B** for the inward-curving sections. **(Per Level)**



STEP 2:

Layout the base level of your raised garden in a "L" shape, using 4 x 4' straight & 4 x 4' curved timbers (refer to image below). Insert stake through the hole of the bracket and into each of the corners to lock all sides in place.



STEP 2a:

For one level, add caps to each of the top corner joints to finish off the raised garden.

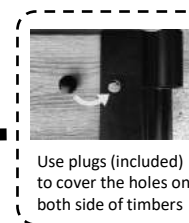
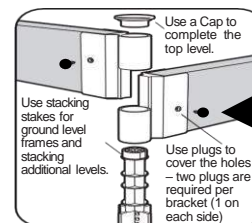
HAPPY GARDENING!

ASSEMBLY INSTRUCTIONS – For Product with Second to Four Levels

LEVEL 2, 3 & 4: Repeat Steps 2 - using 4 x 4' straight & 4 x 4' curved timbers for each levels.

Lastly, add the caps to each of the top corner joint.

How the Joints Work



Use plugs (included) to cover the holes on both side of timbers

