

800001196, 800002196, 800003196, 800004196
 800001197, 800002197, 800003197, 800004197
 800001198, 800002198, 800003198, 800004198
 800001199, 800002199, 800003199, 800004199

frameitall
 simple modular gardens

ASSEMBLY INSTRUCTIONS – Level 1

RAISED GARDEN BED

10' x 16' Big EZ



1 LEVEL



3 LEVELS



4 LEVELS



2 LEVELS

1 LEVEL KIT CONTAINS:

- Composite Boards 4' x 12
- Composite Boards 2' x 8
- Composite Curved Boards x 2
- Stacking Brackets x 44
- Stacking Stakes x 22
- Plugs x 88
- Finishing Caps x 22

2 LEVEL KIT CONTAINS:

- Composite Boards 4' x 33
- Composite Boards 2' x 16
- Composite Curved Boards x 4
- Stacking Brackets x 70
- 4-way Bracing Brackets x 36
- Stacking Stakes x 44
- Plugs x 212
- Finishing Caps x 22

3 LEVEL KIT CONTAINS:

- Composite Boards 4' x 45
- Composite Boards 2' x 24
- Composite Curved Boards x 6
- Stacking Brackets x 114
- 4-way Bracing Brackets x 36
- Stacking Stakes x 66
- Plugs x 300
- Finishing Caps x 22

4 LEVEL KIT CONTAINS:

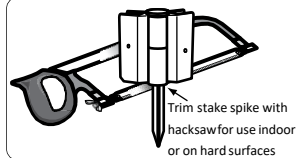
- Composite Boards 4' x 66
- Composite Boards 2' x 32
- Composite Curved Boards x 8
- Stacking Brackets x 140
- 4-way Bracing Brackets x 72
- Stacking Stakes x 88
- Plugs x 424
- Finishing Caps x 22



Layout your Boards along the borderline and connect each Board together by inserting the top of the stake through the bracket loops with the stake pointing to the sky. This enables you to freely position your border to get your desired location.

Recommended Tools:

- Hammer



FOR INDOOR & HARD SURFACE:

If you plan to assemble raised bed on a hard surface, use hacksaw to remove the spike of each stake. Use these cut down stakes for the base level only of your raised garden.

Customer Service: 1800-964-9835 |

support@frameitall.com

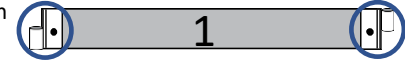
© Frame It All. All Rights Reserved.

STEP 1:

Assemble the Boards by sliding one end of Board into channel end of one of the brackets. Use plugs to cover the holes on both sides to lock the bracket in place.



1. Connect **12** x 4ft Boards with Stacking Brackets on both ends in alternating orientation.



2. Connect **8** x 2ft Boards with a stacking bracket on one end and a mid-section 4-way bracket on the other end in alternating orientation.

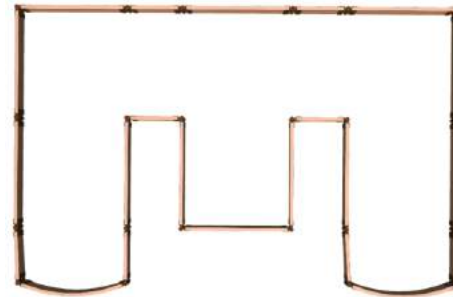


3. Connect **2** x Curved boards with stacking brackets on both ends in alternating orientation .

(Bracket all curved boards exactly as shown to the right)

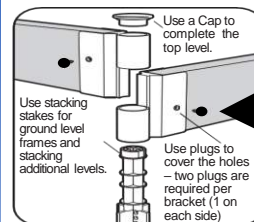


Step 2: Layout the Boards flat on the ground for the first level as shown below:

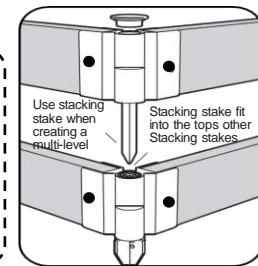


Step 3: When connecting the boards for the first level, insert the stacking stakes upside down so the stake is pointing to the sky. This will allow you to adjust the shape of your frame before driving the stakes into the ground.

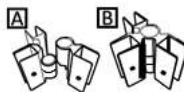
How the Joints Work



Use plugs (included) to cover the holes on both side of Boards



3-Way Connection:
 Combine a top 4-way bracket, mid-section 4-way bracket and stacking bracket.



ASSEMBLY INSTRUCTIONS – Level 1 Continued

Step 4: Once you finish with the adjustments of your base level frame, flip over the stakes and hammer them into the ground. If you are assembly a 1 level design, the last step is to insert your finishing caps on top of each joint. If assembling a multi-levelled design, continue to **Step 5**.

STEP 5:

Connect the boards for your second level in the quantity and orientation as shown below.

1. Connect **4** x 4ft Boards with Stacking Brackets on both ends in alternating orientation.

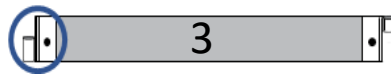


2. Connect **2** x Curved boards with stacking brackets on both ends in alternating orientation .

(Bracket all curved boards exactly as shown to the right)



3. Connect **4** x 4ft Boards with a stacking bracket on one end and a top 4-way bracket on the other end in alternating orientation.



4. Connect **5** x 4ft boards with mid-section 4-way brackets on both sides in alternating orientation.



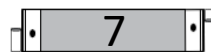
5. Connect **2** x 2ft boards with mid-section 4-way brackets on both sides in alternating orientation.



6. Connect **2** x 4ft boards with a top 4-way bracket on one end and a mid-section 4-way bracket on the other end in alternating orientation.



7. Connect **2** x 2ft boards with a stacking bracket on one end and a top-4-way bracket on the other end in alternating orientation.



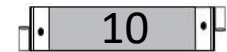
8. Connect **2** x 4ft boards with a top 4-way bracket on one end and a mid-section 4-way bracket on the other end in the same orientation.



9. Connect **4** x 4ft boards with a top-way bracket on both ends in alternating orientation.

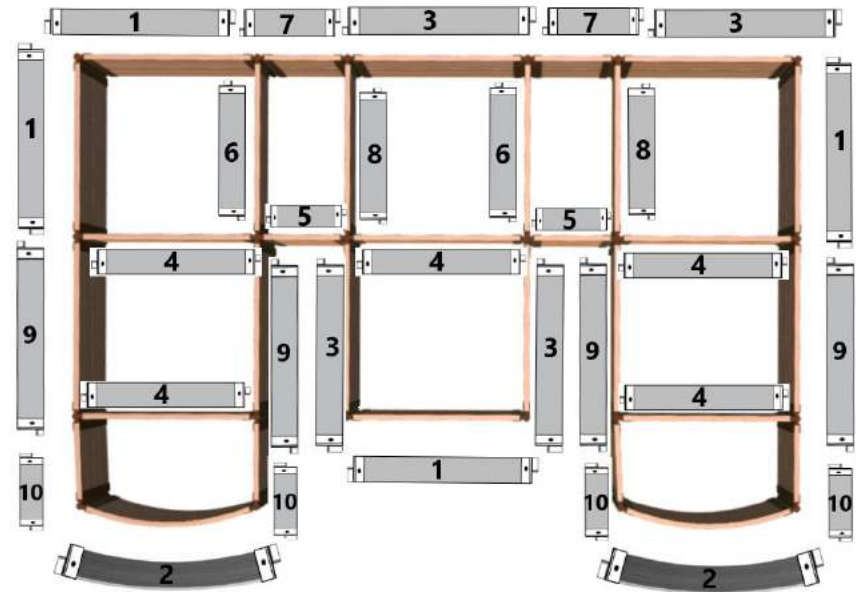


10. Connect **4** x 2ft Boards with Stacking Brackets on both ends in alternating orientation



Step 6: Before stacking your boards, lay them out around your 1st level frame.

NOTE: Stacking stakes will be used for all additional levels and can insert into the top of existing stakes.



Step 7. For a 3-level design, repeat the board layout of level 1 for level 3. For a 4-level design, repeat the board layout of level 2 for level 4.