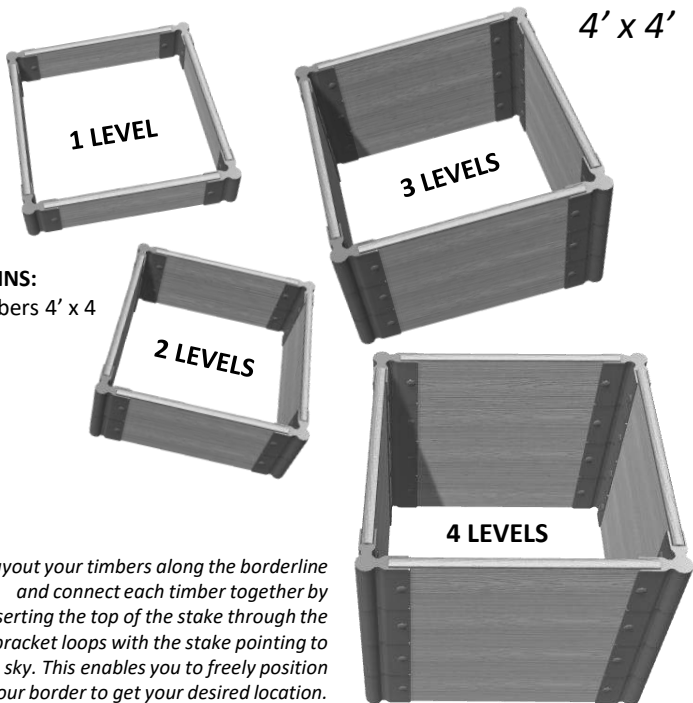


300001058/300002058/300003058/300004058  
 300001425/300002425/300003425/300004425  
 300001424/300002424/300003424/300004424  
 300001080/300001084/300003084/300004084



# RAISED GARDEN BED

4' x 4'



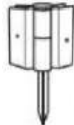
## 1 LEVEL KIT CONTAINS:

- Composite timbers 4' x 4
- Brackets x 8
- \*\*Stakes x 4
- Plugs x 16
- Caps x 4



*Layout your timbers along the borderline and connect each timber together by inserting the top of the stake through the bracket loops with the stake pointing to the sky. This enables you to freely position your border to get your desired location.*

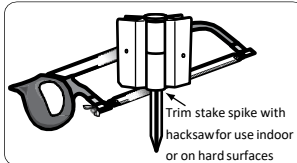
## PARTS IDENTIFICATION



Stacking Stake

### \*\*NOTE

Stacking stakes can be used on all levels and when creating additional levels. **ONLY** Stacking Stakes can stack!



Trim stake spike with hacksaw for use indoor or on hard surfaces

### FOR INDOOR & HARD SURFACE:

If you plan to assemble raised bed on a hard surface, use hacksaw to remove the spike of each stake. Use these cut down stakes for the base level only of your raised garden.

Customer Service: 1800-914-9835 |

[support@frameitall.com](mailto:support@frameitall.com)

© Frame It All. All Rights Reserved.

## ASSEMBLY INSTRUCTIONS – For the First Level

### STEP 1:

Assemble the timbers by sliding one end of timber into channel end of one of the brackets. Use plugs to cover the holes on both sides to lock the bracket in place.

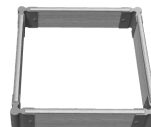


Repeat this process on the opposite end of the timber flipping the bracket in the opposite direction (see image). **Repeat for all timbers.**



### STEP 2:

Layout the base level of your raised garden in a straight square shape, using 4 timbers. Insert stake through the hole of the bracket and into each of the corners to lock all sides in place.



**STEP 2a:** For one level, add caps to each of the top corner joints to finish off the raised garden.

**HAPPY GARDENING!**

## ASSEMBLY INSTRUCTIONS – For Product with Two to Four Levels

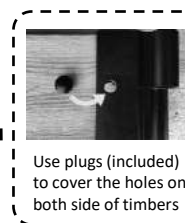
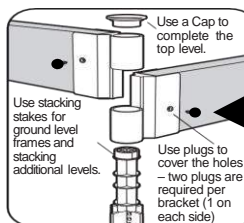
### STEP 3:

For the second level, use 4 timbers and the stacking stakes. Insert one stake through the brackets into the hole on top of the stake beneath it to lock the second level in place.

**LEVEL 3 & 4:** Repeat step 3

Lastly, add the caps to each of the top corner joint.

## How the Joints Work



Use plugs (included) to cover the holes on both side of timbers

