

30000078/300001078/300003078/300004078
 300000402/300001402/300003402/300004402
 300000435/300001435/300003435/300004435
 300000451/300001451/300003451/300004451



RAISED GARDEN BED

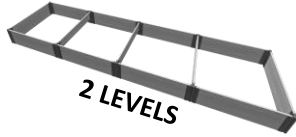
4' x 16'



1 LEVEL



3 LEVELS



2 LEVELS



4 LEVELS

1 LEVEL KIT CONTAINS:

- Composite boards 4' x 10
- Stacking Brackets x 20
- Stacking Stakes x 10
- Plugs x 40
- Caps x 10

2 LEVEL KIT CONTAINS:

- Composite boards 4' x 23
- Stacking Brackets x 34
- 4-way Brackets x 12
- Stacking Stakes x 20
- Plugs x 92
- Caps x 10

3 LEVEL KIT CONTAINS:

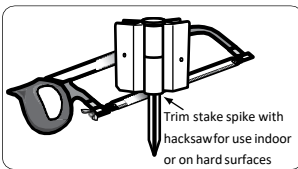
- Composite boards 4' x 36
- Stacking Brackets x 48
- 4-way Brackets x 24
- Stacking Stakes x 30
- Plugs x 144
- Caps x 10

4 LEVEL KIT CONTAINS:

- Composite boards 4' x 46
- Stacking Brackets x 68
- 4-way Brackets x 24
- Stacking Stakes x 40
- Plugs x 184
- Caps x 10



Layout your boards along the borderline and connect each Board together by inserting the top of the stake through the bracket loops with the stake pointing to the sky. This enables you to freely position your border to get your desired location.



FOR INDOOR & HARD SURFACE:

If you plan to assemble raised bed on a hard surface, use hacksaw to remove the spike of each stake. Use these cut down stakes for the base level only of your raised garden.

Customer Service: 1800-914-9835 | support@frameitall.com
 © Frame It All. All Rights Reserved.

ASSEMBLY INSTRUCTIONS – For the First Level

STEP 1:

Assemble the boards by sliding one end of Board into channel end of one of the brackets. Use plugs to cover the holes on both sides to lock the bracket in place.



Repeat this process on the opposite end of the Board flipping the bracket in the opposite direction (see image). Repeat for all boards on the First level.



Note: Cross boards will be installed on level 1 & 3 for a 3-level design only. Repeat Step 3 for levels 1 & 3 if installing a 3-level design.

STEP 2:

Layout the base level of your raised garden in a straight rectangular shape, using 10 boards. Insert stake through the hole of the bracket and into each of the corners to lock all sides in place.



STEP 2a: For one level, add caps to each of the top corner joints to finish off the raised garden. **HAPPY GARDENING!**

ASSEMBLY INSTRUCTIONS – For Product with Two to Four Levels

STEP 3:

For the second level, connect 4 boards with a stacking bracket on one end and a mid-section 4-way bracket on the other end in alternating orientation.



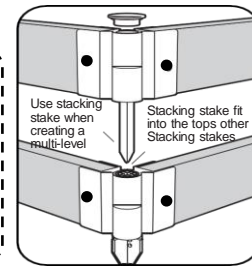
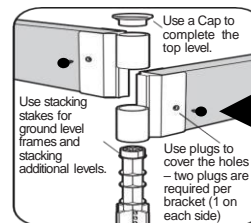
Then, connect 2 boards with top 4-way brackets on both ends in alternating orientation as shown to the right. These 3 boards will be used to install the cross Board.



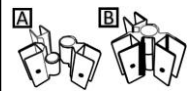
Now connect 4 boards with stacking brackets on both ends as you did for the first level.



How the Joints Work

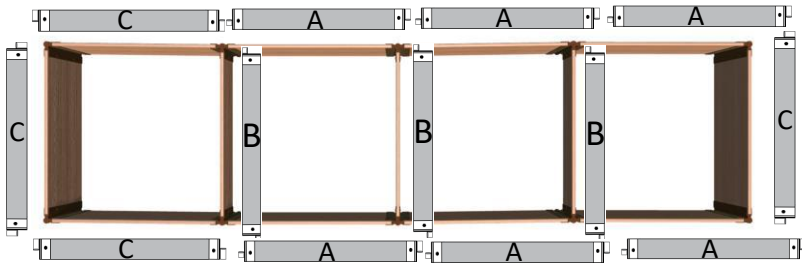


3-Way Connection: Combining one half of a 4-way bracket and a stacking bracket (A), will result in a 3-way junction (B).



STEP 4:

Layout the boards for the second level flat on the ground while referencing the diagram below. Place the cross boards for level 2 on top of the upside stakes to ensure it will fit. Once adjustments have been made, the stakes can be hammered into the ground and the second level can be stacked.



Note: Stacking stakes insert into the top of the previous level stakes.

STEP 5:

Connect 13 boards for level 3 with stacking brackets on both ends and stack them as you did for level 1. **(Only for 3-level design)**

3 LEVELS

6 x cross Board
for a 3-level
design.



STEP 6:

Connect 13 boards for level 4 in the same pattern as you did for level 2. Stack and connect them in the same way as well. **(Only for a 4-level design)**

4 LEVELS

6 x cross
boards on a
4-level design

