

Custom DBW Manifold Adapter Form

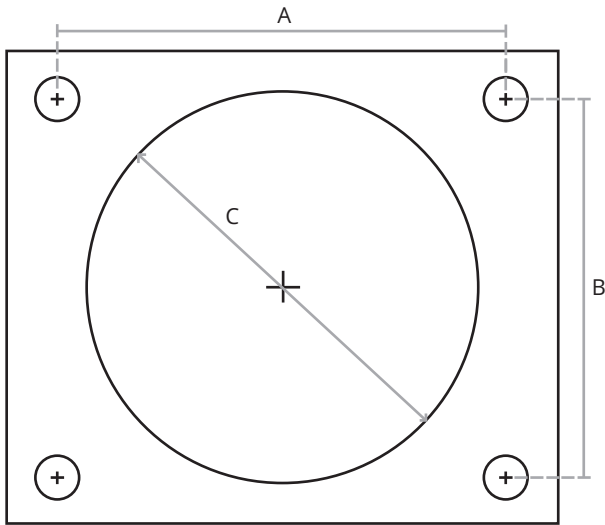
Please provide the following measurements as accurately* as possible.

*It is recommended that you use a digital caliper and provide measurements in MM to the nearest hundredth

Please email completed form to
outsidergaragellc@gmail.com

**Lead times are roughly
 2-3 weeks for custom
 manifold adapters**

Name _____ Email: _____ Phone: _____



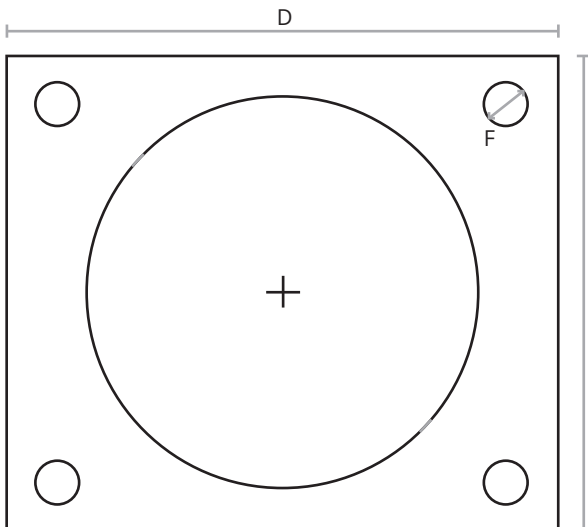
Step 1:

With your throttle body removed, looking directly at the throttle flange on your intake manifold, please provide a photo and measurements for A, B and C shown in the diagram to the left.

A: _____
 Horizontal (Bolt Hole Center to Bolt Hole Center)

B: _____
 Vertical (Bolt Hole Center to Bolt Hole Center)

C: _____
 Bore (Diameter)



Step 2:

With your throttle body removed, looking directly at the throttle flange on your intake manifold, please provide measurements for D, E and F shown in the diagram to the left.

D: _____
 Horizontal (Edge to Edge)

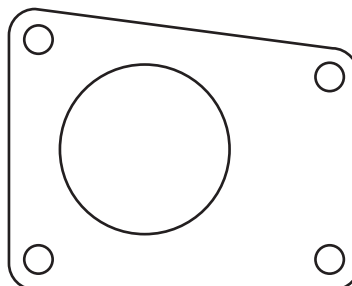
E: _____
 Vertical (Edge to Edge)

F: _____
 Bolt Hole Diameter

Note:

If your throttle manifold flange has irregularities such as off-center bore, rounded exterior corners or non rectangular flange dimensions, please provide detailed photos, additional measurements and specific notes in the box to the right.

If your manifold flange has extreme irregularities, we may not be able to create an accurate drawing from these measurements. In this case, we would require you to mail us your existing cable driven throttle body to create a manifold flange drawing.



Example of Irregular manifold flange

Notes: