

THE TSO MUSIC & ART SERIES

The TSO Music & Art Series this season features Toronto artists on the cover of the program book. The TSO is dedicated to celebrating other artists in the community and how art is connected to music.

This cover features detail from Elizabeth Lennie's <enter piece information here>.

Elizabeth Lennie



Elizabeth

Working within the tradition of the figurative painter, radiant moments that live in memory define the images I choose to paint. The work celebrates notions of self and identity, set against the backdrop of the great Canadian Shield. Recurring themes are grounded in the liquid landscape, of swimming in summer, and skating on those same lakes when winter descends. I reference the experience of childhood and youth, and as summer ends I turn my attention to the memory myth of the Canadian winter, and our collective obsession with pond hockey.

Elizabeth Lennie lives in mid-town Toronto. Her paintings are held in public and private collections worldwide, most notably the Canadian Hockey Hall of Fame. She is also a narrator and commercial voice-over artist, recently network voice at TVO from 2007-2015.

For more information, please visit www.elizabethlennie.com.

ISSUE 04 | TSO PROGRAM

key

TSO PROGRAM

TSO

Toronto
Symphony
Orchestra

Jeff Melanson
President & CEO
Peter Oundjian
Music Director

BMO Financial Group
SEASON PRESENTING SPONSOR

THE RENETTE AND DAVID BERMAN
FAMILY FOUNDATION
SEASON PATRON

2015
DEC
-
JAN

THE TSO MUSIC & ART SERIES

The TSO Music & Art Series this season features Toronto artists on the cover of the program book. The TSO is dedicated to celebrating other artists in the community and how art is connected to music.

This cover features detail from Elizabeth Lennie's <enter piece information here>.

Elizabeth Lennie



Elizabeth

Working within the tradition of the figurative painter, radiant moments that live in memory define the images I choose to paint. The work celebrates notions of self and identity, set against the backdrop of the great Canadian Shield. Recurring themes are grounded in the liquid landscape, of swimming in summer, and skating on those same lakes when winter descends. I reference the experience of childhood and youth, and as summer ends I turn my attention to the memory myth of the Canadian winter, and our collective obsession with pond hockey.

Elizabeth Lennie lives in mid-town Toronto. Her paintings are held in public and private collections worldwide, most notably the Canadian Hockey Hall of Fame. She is also a narrator and commercial voice-over artist, recently network voice at TVO from 2007-2015.

For more information, please visit www.elizabethlennie.com.

ISSUE 04 | TSO PROGRAM

key

TSO PROGRAM

2015
DEC
-
JAN



Toronto
Symphony
Orchestra

Jeff Melanson
President & CEO
Peter Oundjian
Music Director

BMO Financial Group

SEASON PRESENTING SPONSOR

THE RENETTE AND DAVID BERMAN
FAMILY FOUNDATION

SEASON PATRON

THE TSO MUSIC & ART SERIES

The TSO Music & Art Series this season features Toronto artists on the cover of the program book. The TSO is dedicated to celebrating other artists in the community and how art is connected to music.

This cover features detail from Elizabeth Lennie's <enter piece information here>.

Elizabeth Lennie



Elizabeth

Working within the tradition of the figurative painter, radiant moments that live in memory define the images I choose to paint. The work celebrates notions of self and identity, set against the backdrop of the great Canadian Shield. Recurring themes are grounded in the liquid landscape, of swimming in summer, and skating on those same lakes when winter descends. I reference the experience of childhood and youth, and as summer ends I turn my attention to the memory myth of the Canadian winter, and our collective obsession with pond hockey.

Elizabeth Lennie lives in mid-town Toronto. Her paintings are held in public and private collections worldwide, most notably the Canadian Hockey Hall of Fame. She is also a narrator and commercial voice-over artist, recently network voice at TVO from 2007-2015.

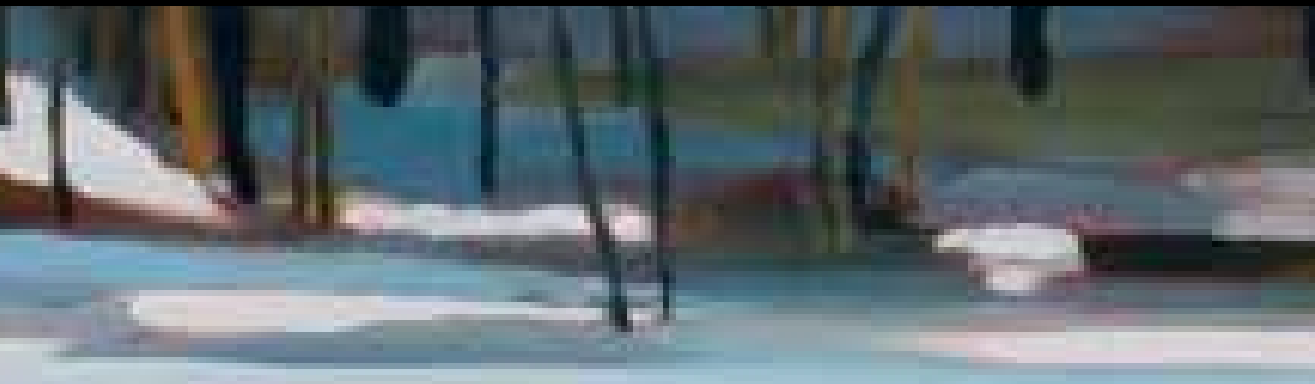
For more information, please visit www.elizabethlennie.com.

ISSUE 04 | TSO PROGRAM

key

TSO PROGRAM

2015
DEC
-
JAN



Welcome to the Toronto Symphony Orchestra's new program book: *key*. And welcome to your concert.

You have before you our newly designed program book. It's been a labour of love for us in creating it and we hope you too will enjoy it. This summer we conducted research with our patrons about the program book; we sought your advice on design and content and we went out and surveyed 2,700 subscribers and ticket buyers. You spoke. We listened. And you hold in your hands the results of your feedback.

We encourage you to keep this program book. Bring it back to another show you're coming to. Collect them. Or leave them with us and we will use them again at another performance. Our greatest asset is our patrons and we want this to be something you enjoy and will be proud to share with your friends and family.

We could not provide such a beautiful program book without the very generous support of our patrons, sponsors, subscribers, and ticket buyers. We thank you sincerely for your generous support and we look forward to having you back again.

David Postill,
Vice President, Marketing

Please let us know what you think!

Email: contactus@TSO.CA
Social media: Twitter and Facebook
During your concert: Patron Services Desk

Supporting
the arts,
locally.

We take pride in our local communities. That's why, each year, through various donations and sponsorships we are committed to providing our support.



We're here to help.™

BMO Financial Group is proud to be the 2015/2016 Season Presenting Sponsor of the Toronto Symphony Orchestra.