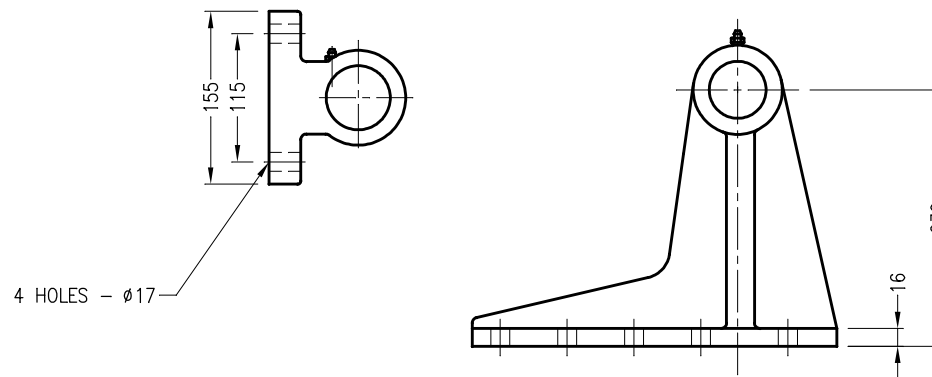


## SERIES 2000 MODEL DESIGNATION

S2-65BT-5-4.8 OP5

STROKE IN METRES  
NUMBER OF STAGES  
DIMENSION  
SERIES 2000



## HOIST DETAILS

STROKE ————— 4800  
WORKING PRESSURE ————— 2500 PSI  
TEST PRESSURE ————— 3125 PSI  
COMPONENTS LIST ————— 0266K0509  
SEAL KIT ————— 0001S2710  
PORT SIZE ————— 1 1/16" UNO  
PAINT ————— DELTA RED

ESTIMATED DRY WEIGHT: 166 KG  
CALCULATED SWEEP VOLUME: 41.5 L

**DO NOT SCALE  
IF IN DOUBT ASK**

## COPYRIGHT - ALL RIGHTS RESERVED

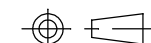
THIS DRAWING IS THE PROPERTY OF  
DELTA HYDRAULICS PTY LTD AND  
FURNISHED FOR TEMPORARY USE AND  
TO BE RETURNED THEREAFTER IF  
REQUESTED. IT IS NOT TO BE COPIED  
OR DISCLOSED TO OTHERS WITHOUT  
EXPRESS WRITTEN CONSENT.

| REV | DESCRIPTION | DATE | REVISED | APPROVED |
|-----|-------------|------|---------|----------|
|     |             |      |         |          |
|     |             |      |         |          |
|     |             |      |         |          |
|     |             |      |         |          |
|     |             |      |         |          |
|     |             |      |         |          |
|     |             |      |         |          |
|     |             |      |         |          |
|     |             |      |         |          |

## MATERIAL

UNLESS OTHERWISE STATED  
ALL DIMENSIONS IN MILLIMETRES  
BREAK ALL EDGES 0.5 x 45° MIN.  
MACHINED SURFACE FINISH 3.2 µm MIN.  
FABRICATED SURFACE FINISH 6.3 µm MIN.  
DIMENSIONAL TOLERANCES  
MACHINED: 0-1000mm ±0.25  
OVER 1000mm ±1  
FABRICATED: 0-1000mm ±1  
OVER 1000mm ±2

REFERENCE AUSTRALIAN STANDARD AS1100



DRAWN:  
D. FRANKCOMBE

CHECKED:  
R. MASON

APPROVED  
SALES:

APPROVED  
ENG:

**DELTA HYDRAULICS** PTY LTD  
MANUFACTURING HYDRAULIC ENGINEERS  
ACN 009 567 186

CLIENT  
NEW ZEALAND HYDRAULICS

TITLE  
S2-65BT-5-4.8 OP5  
SERIES 2000 DELHOIST

DATE : 28JUL15

SCALE 1:5

A3

DRG No  
0266A0509

SHT of 1  
REV