

4 HOLES M12 x 1.75P

FOOTMOUNTS REMOVED FOR CLARITY

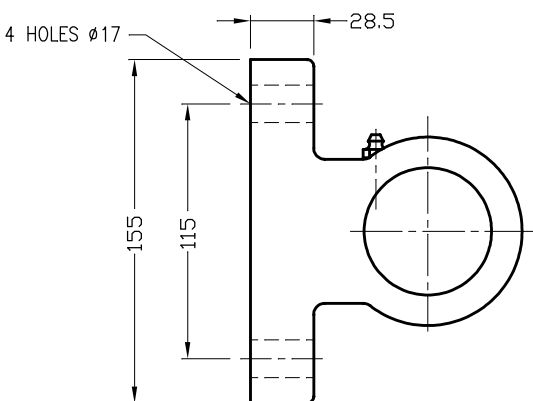
SERIES 2000 MODEL DESIGNATION

S2-55TT-4-3.4 OP5 & 9

STROKE IN METRES
NUMBER OF STAGES
DIMENSION
SERIES 2000

ESTIMATED DRY WEIGHT: 106 KG
CALCULATED SWEEP VOLUME: 24 L

HOIST DETAILS
STROKE 3400
WORKING PRESSURE 2500 PSI
TEST PRESSURE 3125 PSI
COMPONENTS LIST 0266K0492
SEAL KIT 0001S2706
PORT SIZE 1 1/16" UNO
PAINT DELTA RED



DO NOT SCALE
IF IN DOUBT ASK

COPYRIGHT - ALL RIGHTS RESERVED
THIS DRAWING IS THE PROPERTY OF
DELTA HYDRAULICS PTY LTD AND
FURNISHED FOR TEMPORARY USE AND
TO BE RETURNED THEREAFTER IF
REQUESTED. IT IS NOT TO BE COPIED
OR DISCLOSED TO OTHERS WITHOUT
EXPRESS WRITTEN CONSENT.

REV	DESCRIPTION	DATE	REVISED	APPROVED

MATERIAL
UNLESS OTHERWISE STATED ALL DIMENSIONS IN MILLIMETRES BREAK ALL EDGES 0.5 x 45° MIN. MACHINED SURFACE FINISH 3.2 µm MIN. FABRICATED SURFACE FINISH 6.3 µm MIN. DIMENSIONAL TOLERANCES MACHINED: 0-1000mm ±0.25 OVER 1000mm ±1 FABRICATED: 0-1000mm ±1 OVER 1000mm ±2 REFERENCE AUSTRALIAN STANDARD AS1100

DRAWN: S. MORRIS
CHECKED: R. MASON
APPROVED SALES:
APPROVED ENG:

DELTA HYDRAULICS PTY LTD MANUFACTURING HYDRAULIC ENGINEERS ACN 009 567 186	
CLIENT NEW ZEALAND HYDRAULICS	SHT of 1
TITLE S2-55TT-4-3.4 OP5 & 9 SERIES 2000 DELHOIST	REV
DATE : 27JUL15	SCALE 1:2.5
A3	

DRG No
0266A0492