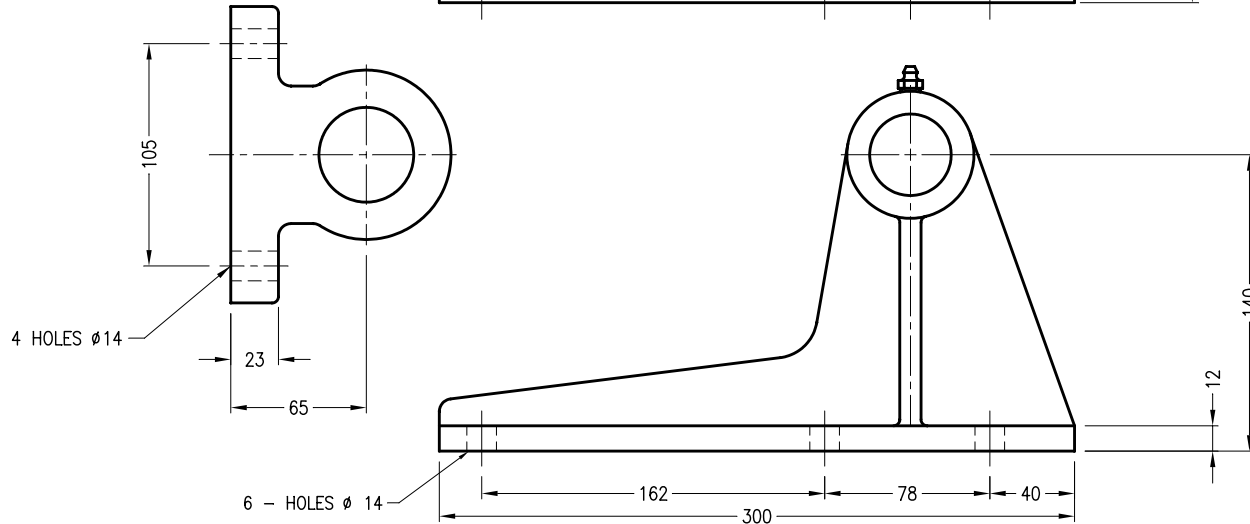


**SERIES 2000
MODEL DESIGNATION**

S2-45BT-3-3.3

STROKE IN METRES
NUMBER OF STAGES
DIMENSION
SERIES 2000



HOIST DETAILS

STROKE ————— 3300
WORKING PRESSURE ————— 2500 PSI
TEST PRESSURE ————— 3100 PSI
COMPONENTS LIST ————— 0001K2023
SEAL KIT ————— 0001S2006
PORT SIZE ————— 1 1/16" UNO
PAINT ————— DELTA RED

**DO NOT SCALE
IF IN DOUBT ASK**

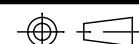
COPYRIGHT - ALL RIGHTS RESERVED
THIS DRAWING IS THE PROPERTY OF
DELTA HYDRAULICS PTY LTD AND
FURNISHED FOR TEMPORARY USE AND
TO BE RETURNED THEREAFTER IF
REQUESTED. IT IS NOT TO BE COPIED
OR DISCLOSED TO OTHERS WITHOUT
EXPRESS WRITTEN CONSENT.

REV	DESCRIPTION	DATE	REVISED	APPROVED

MATERIAL

UNLESS OTHERWISE STATED
ALL DIMENSIONS IN MILLIMETRES
BREAK ALL EDGES 0.5 x 45° MIN.
MACHINED SURFACE FINISH 3.2 µm MIN.
FABRICATED SURFACE FINISH 6.3 µm MIN.
DIMENSIONAL TOLERANCES
MACHINED: 0-1000mm ±0.25
OVER 1000mm ±1
FABRICATED: 0-1000mm ±1
OVER 1000mm ±2

REFERENCE AUSTRALIAN STANDARD AS1100



DRAWN: J. KNOWLES
CHECKED: D. RICHARDS
APPROVED SALES:
APPROVED ENG:



CLIENT
DELHOIST PTY LTD
TITLE
**S2-45BT-3-3.3
DELHOIST CYLINDER ASSEMBLY**
DATE : 06APR2000 SCALE 1:2.5 A3

SHT 1 of 1
REV

DRG No
0001A2023