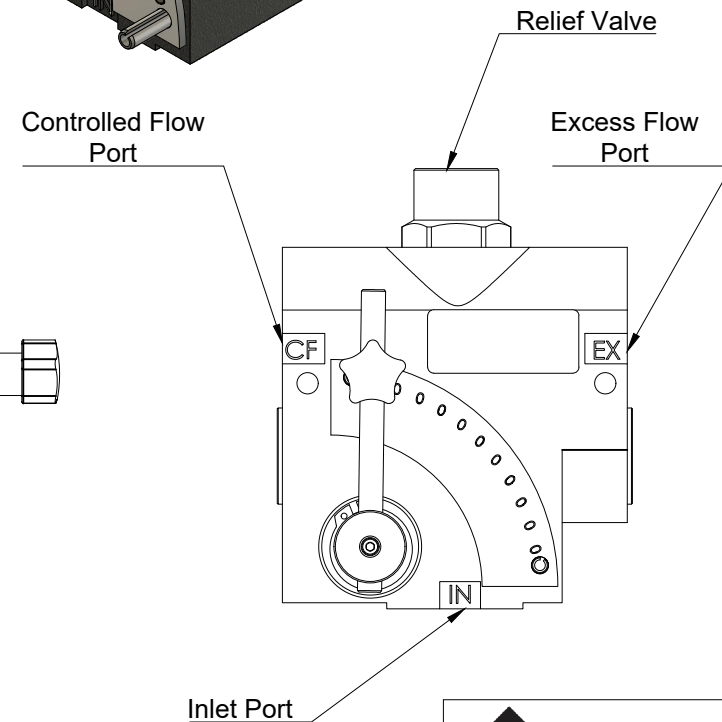
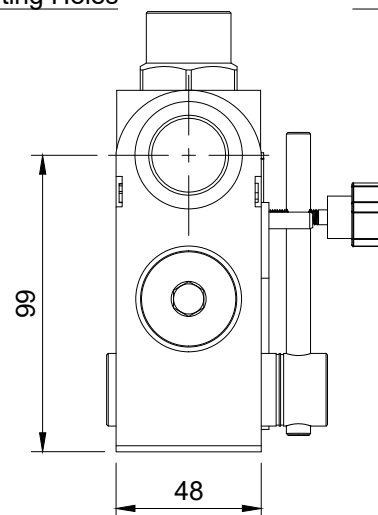
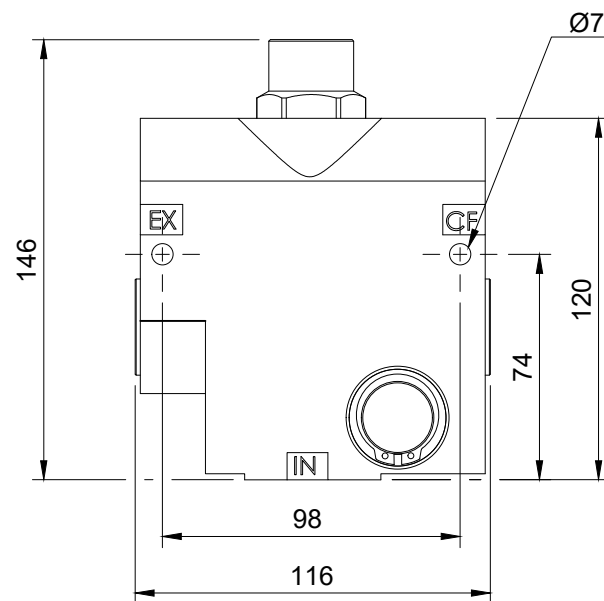


**Note:**  
Using the adjustment; low numbers reduce flow to the CF port, high numbers increase flow to the CF port.



ALL DIMENSIONS IN MM

Priority Flow Control c/w relief 3/4" BSPP Ports

Maximum Flow	113 L/min	Working Pressure	3000 PSI
--------------	-----------	------------------	----------

OP51FCR-12



19/04/2023