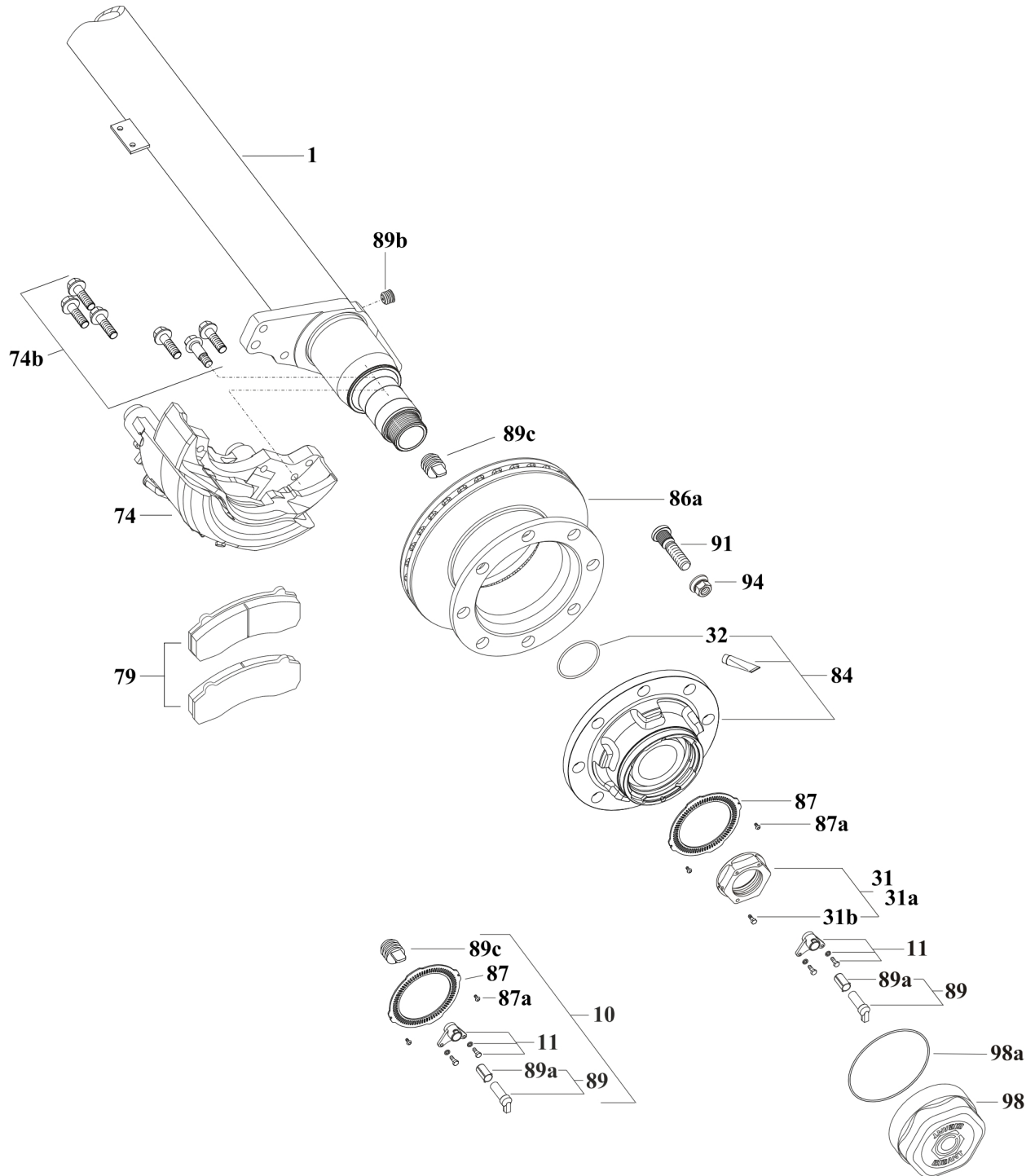


SPARE PARTS

RIGID AXLE 9 t DISK BRAKE Ø377 Ø127 - Offset 0 - 8 Stud M22-Ø275		DKH2 09008 3745W	
Version: 12/2015	Edition: 14/02/2017	EA12230	Page: 1 (3)



RIGID AXLE 9 t DISK BRAKE Ø377 Ø127 - Offset 0 - 8 Stud M22-Ø275	DKH2 09008 3745W
--	-------------------------

Version: 12/2015	Edition: 14/02/2017	EA12230	Page: 2 (3)
------------------	---------------------	---------	-------------

Item	Part-No.	Qty.	Description	Dimension
1			Axle beam according to serie-no. of axle	
10	709714205	1	Kit ABS 80 teeth with sensor LG1000 for offset 0	
11	709317752	2	Kit ABS sensor bracket for offset 0 with screws and washer	
31	709317882	1	Kit spindle nut right with screw	M68x1,5 SW 95
31a	709317883	1	Kit spindle nut left with screw	M68x1,5 SW 95
31b	701306016	2	Screw	M6 x 16
32	702500084	2	O-ring	Ø84x4
74	709285258	1	Brake caliper right without brake pads	PAN 19-1+
74	709285257	1	Brake caliper left without brake pads	PAN 19-1+
74b	709317794	2	Kit screw for 1 brake	
79	709291056	1	Kit brake pads	PAN 19-1 / 19-1+
84	709317981	2	Hub complete K2 8 holes 3745 with o-rings parts 32 and 98a	
86a	709267088	2	Brake disk 3745 B=159,5	8xØ26,5/275
87	709264049	2	ABS sensor ring 80 teeth Ø128	
87a	701605010	4	Screw	M5x10
89	709714203	2	Kit Inductive sensor ABS with bush and grease (incl. part 89b)	L=1000
89a	708505035	2	Bush of sensor	
89b	709237017	2	Cap pass cable	Ø22x4,4/23
89c	709404038	2	Cap pass cable	
			for SO / SAO / ZO	
91	709713579	16	Wheel stud	M22x1,5 x 95
			for ZAO	
91	709226108	16	Wheel stud	M22x1,5 x 108
94	708606072	16	Spigot wheel nut	M22x1,5 SW32

SPARE PARTS

RIGID AXLE 9 t DISK BRAKE Ø377 Ø127 - Offset 0 - 8 Stud M22-Ø275			DKH2 09008 3745W		
Version: 12/2015		Edition: 14/02/2017		EA12230	Page: 3 (3)
Item	Part-No.	Qty.	Description	Dimension	
98	709237085	2	Hub cap	M170x2 SW160	
98a	702500160	2	O-ring	Ø160x3	