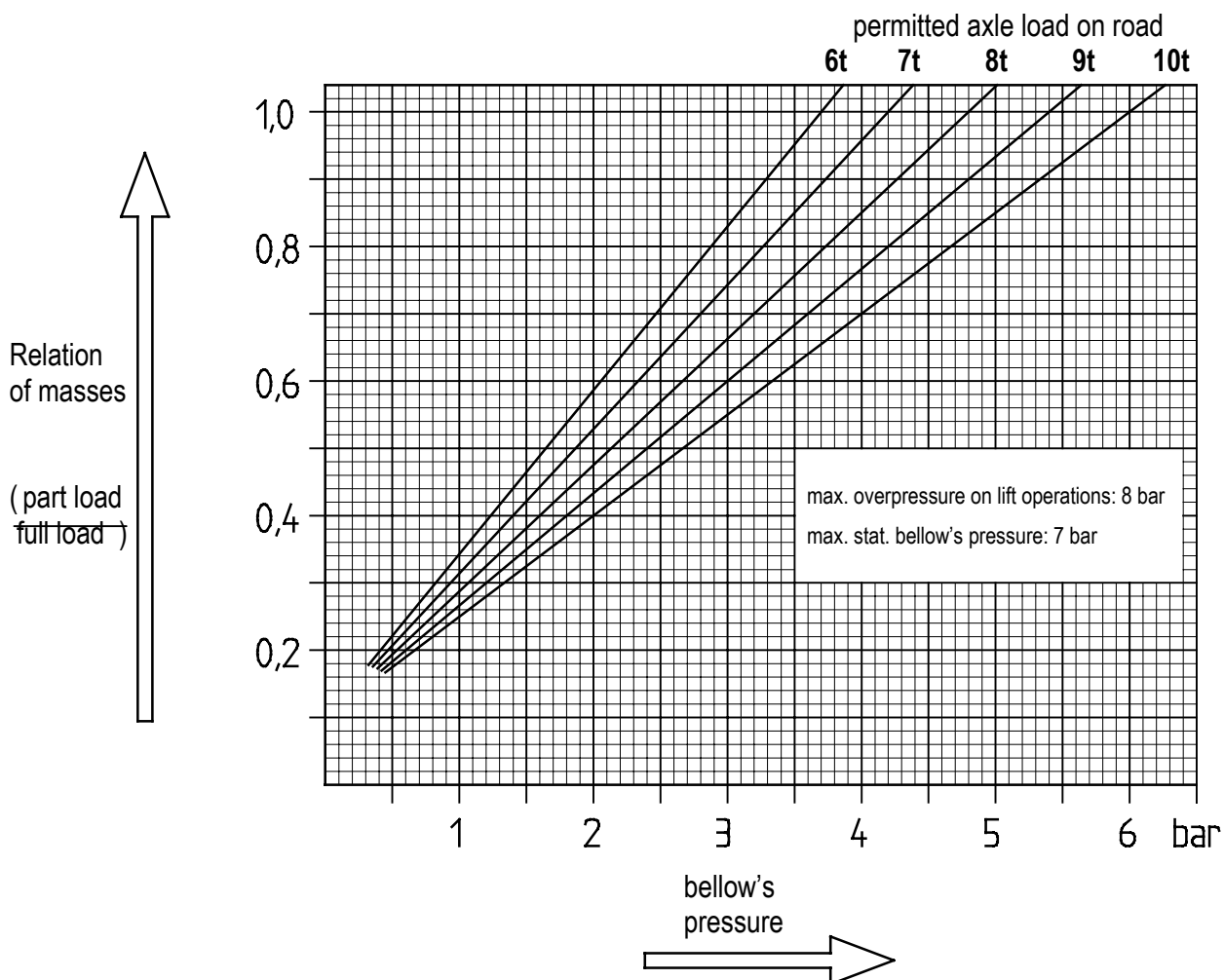
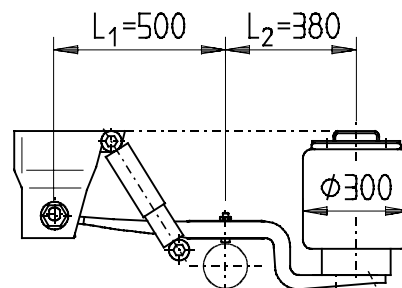


## Curves for Air Suspensions Model NKLR 50

Types of suspension:

- NKLRO 50
- NKLRM 50
- NKLRS 50
- NKLRT 50



The effective surface area in the middle of the bellows stroke is app. 42250 mm<sup>2</sup>

Adoptive unsprung mass = appr. 10% of permitted axle load on road

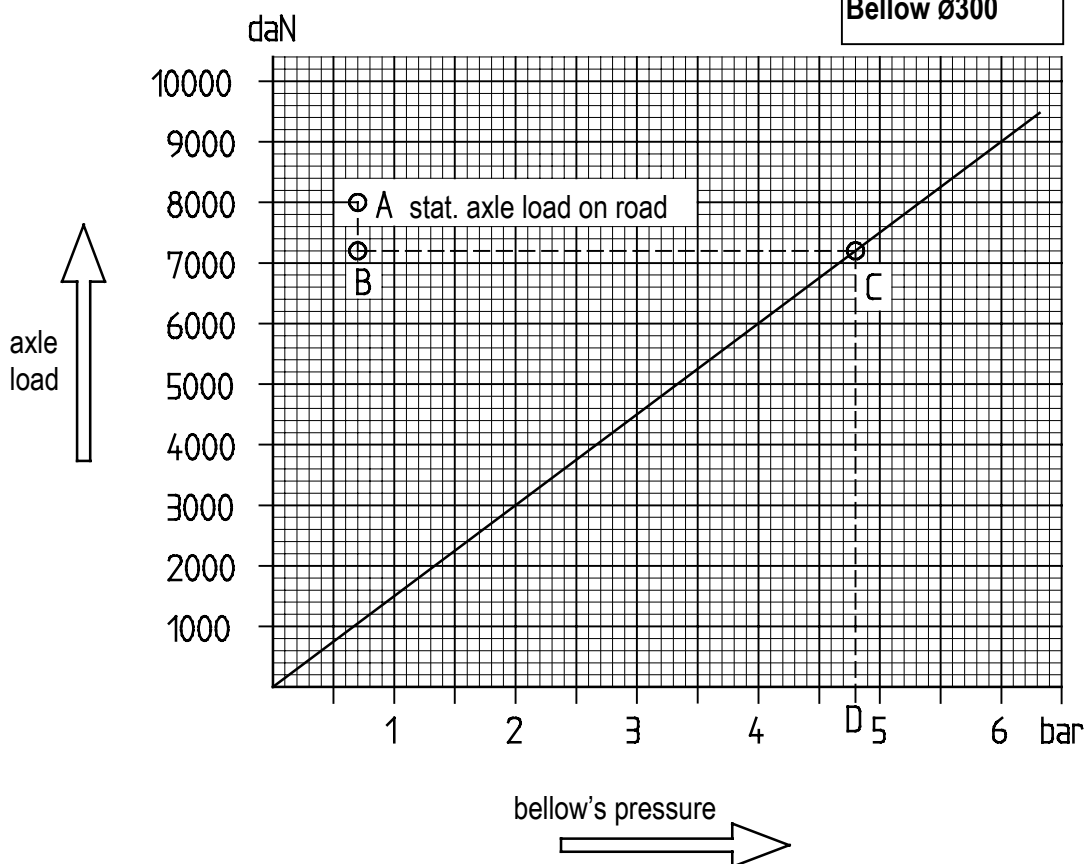
Diagram of air bellows' pressure dependent on axle load see overleaf

----- example  
**A - B** unsprung mass  
**C** point of intersection  
**D** stat. bellow's pressure in bar, related to stat. axle load in point A

Types of susp.:

NKLRO 50  
 NKLRM 50  
 NKLRS 50  
 NKLRT 50

Bellow ø300



## Bellow's Pressure Schedule

actual axle load in kg	permitted axle load on road (in kg)					
	4000	6000	8000	9000	10000	11000
full load	2,40	3,60	4,80	5,47	6,00	6,67
400	0*					
600	0,13	0*				
800	0,27	0,13		0*		
1000	0,40	0,27		0,13		0*
1200	0,53	0,40		0,27		0,13
1400	0,67	0,53		0,40		0,27
1600	0,80	0,67		0,53		0,40
1800	0,93	0,80		0,67		0,53
2000	1,07	0,93		0,80		0,67
2200	1,20	1,07		0,93		0,80
2400	1,33	1,20		1,07		0,93
2600	1,47	1,33		1,20		1,07
2800	1,60	1,47		1,33		1,20
3000	1,73	1,60		1,47		1,33
3200	1,87	1,73		1,60		1,47
3400	2,00	1,87		1,73		1,60
3600	2,13	2,00		1,87		1,73
3800	2,27	2,13		2,00		1,87
4000	2,40	2,27		2,13		2,00

bellow's pressures in bar

\* unsprung mass