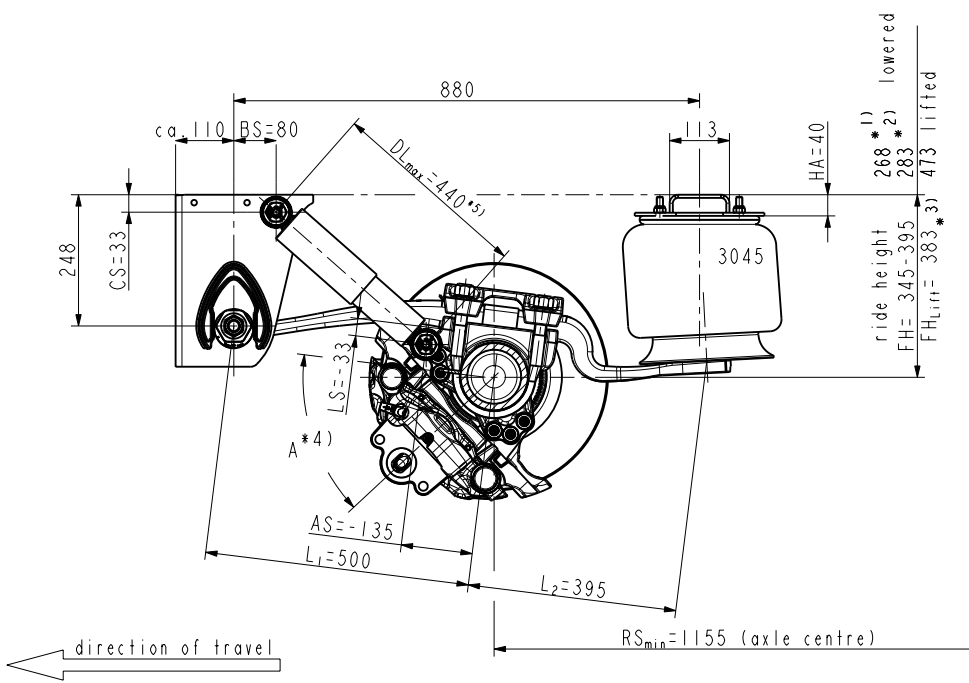


ride height (FH)

DOKH2 090 NKLRM 50.39/9.1 GL70 VS15 345-395



axle load:

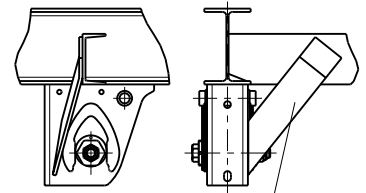
max. 9000 kg at 105 km/h

(depend on spring track and centre of gravity height)

lift in total: 190 mm at FH<sub>ol</sub> \*2)

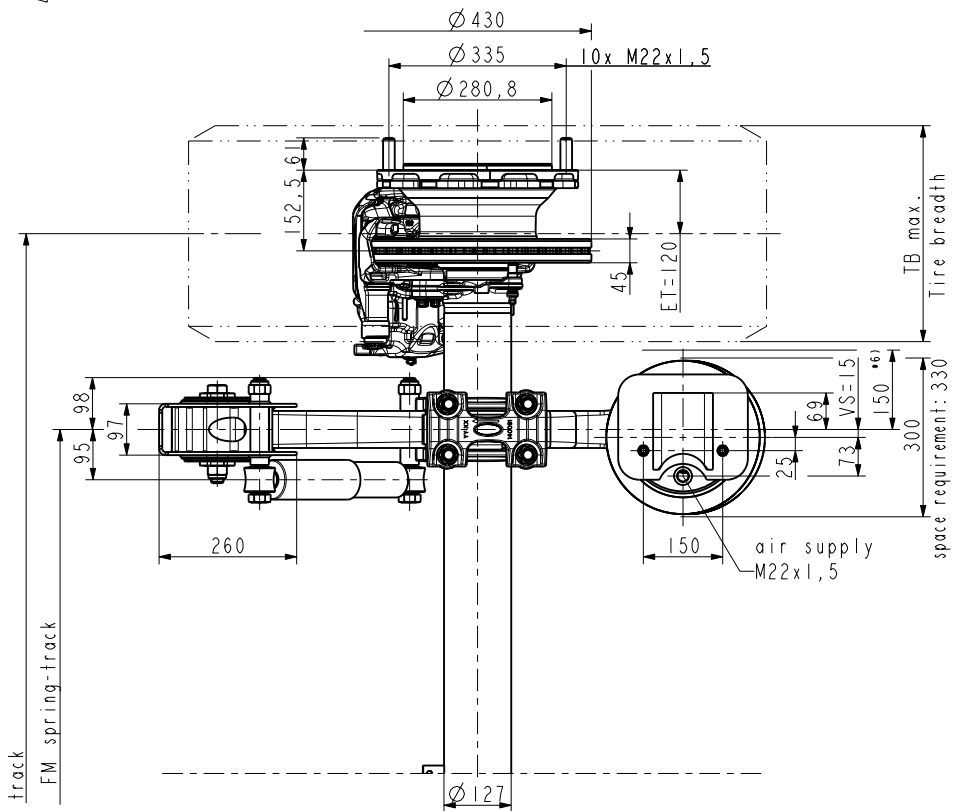
- \* 1) laden, without air
- \* 2) unladen, without air
- \* 3) FH<sub>Lift</sub>=383 mm  
minimum acceptable height with axle lift (theoretical distance Tire-Road = 100mm)
- \* 4) -Twinlift No.  
only for A=50°: 700631370
- \* 5) Just for raising and lowering (HS) locking valve to be adjusted that air supply is stopped at DL<sub>max</sub>=440.
- \* 6) space requirement
- \* 7) Low ground clearance for brake cylinder with A=50°

Recommendation side support  
Details see Installation Instructions



not part of normal delivery

Test report:  
361-073-13 (4345 HALDEX)



No.	track	A	FM	KMAT		weight kg (±2%)	TB max.	recommendation for single mount
					ABS			
1	2040	50°*7)	1300	793012446	793012447	429	410	385/65 R22,5
								Take care of sufficient tyre load capacity

OBSERVE INSTALLATION INSTRUCTIONS !!!

**gigant**

TRENKAMP & GEHLE GmbH  
D-49413 Dinklage

Draw.-no.: 793012445

Index  
0