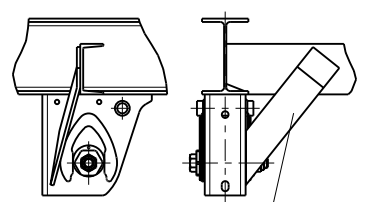


DNOKH2 090 NKL RM 50.39/9.1 GL70 VS15 ride height (FH) 345-395

axle load:
max. 9000 kg at 105 km/h
 (depend on spring track and centre of gravity height)

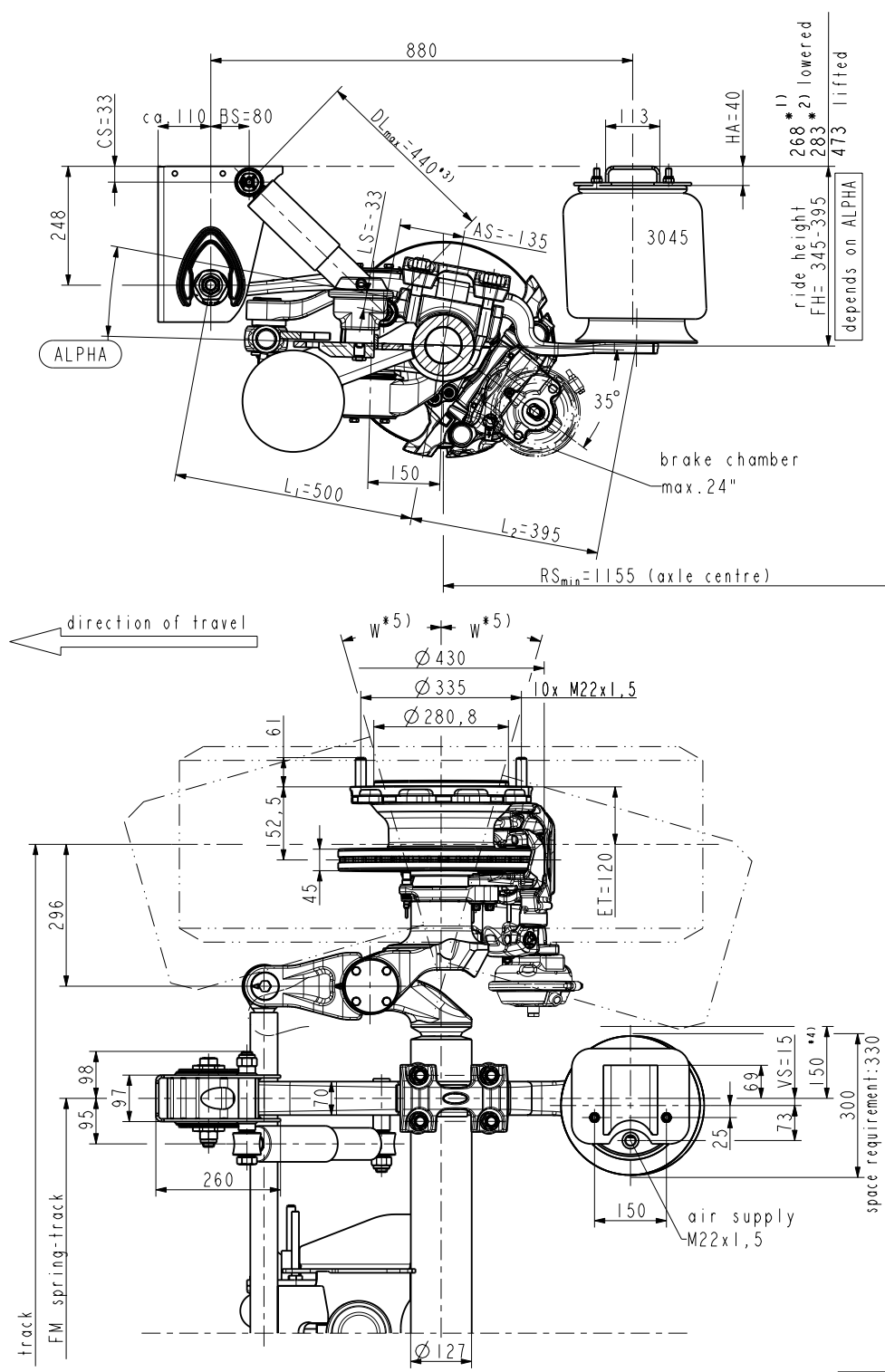
- lift in total: 190 mm at FH_{OL} *2)
- * 1) laden, without air
 - * 2) unladen, without air
 - * 3) Just for raising and lowering (HS) locking valve to be adjusted that air supply is stopped at DL_{max}=440.
 - * 4) space requirement
 - * 5) Reducing of the steer angle has to be done by the trailer manufacturer

Recommendation side support
 Details see Installation Instructions



not part of normal delivery

Test report:
 361-073-13 (4345 HALDEX)



FH/ ALPHA	track	W	FM	KMAT		weight kg (±2%)	Recommendation for single mount
					ABS		
365-385/ 9°	2040	16°	980	793012449	793012450	623	
							385/65 R22,5
							Take care of sufficient tyre load capacity

OBSERVE INSTALLATION INSTRUCTIONS !!!



TRENKAMP & GEHLE GmbH
 D-49413 Dinklage

Draw.-no.: 793012448 Index 0