

ride height (FH)

DKH2 090 NKLRM 50.39/9.1 GL70 VS15 345-395

axle load:

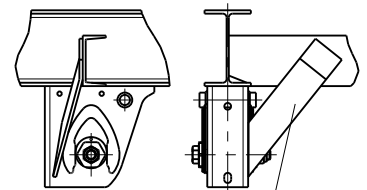
max. 9000 kg at 105 km/h

(depend on spring track and centre of gravity height)

lift in total: 190 mm at FH_{oL} *2)

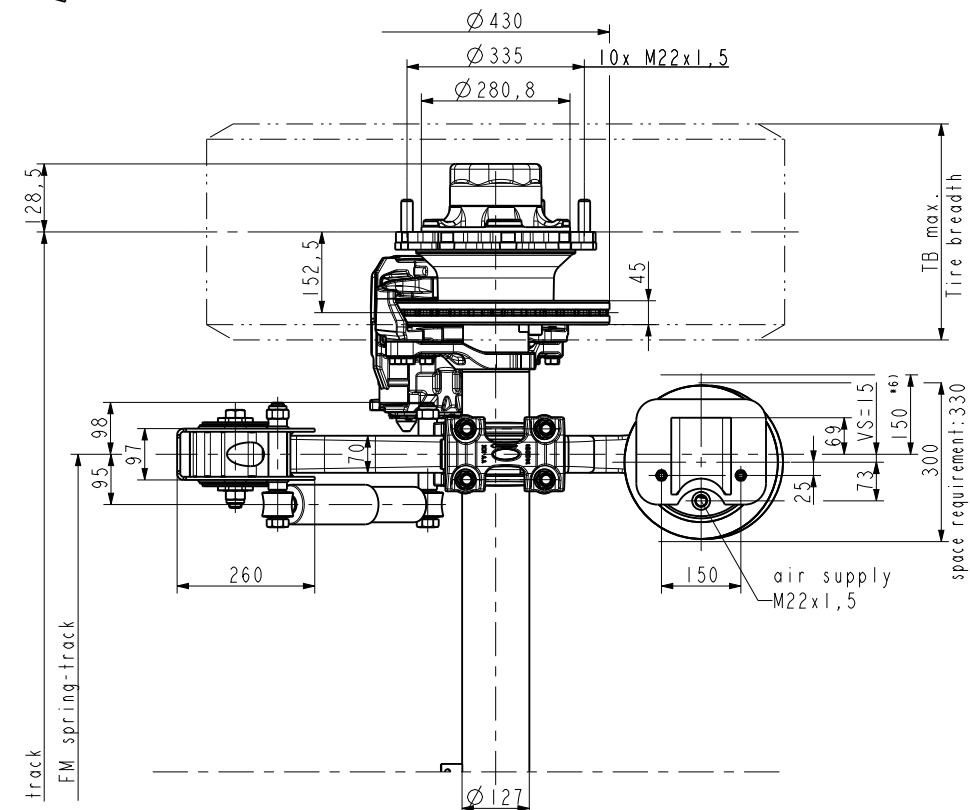
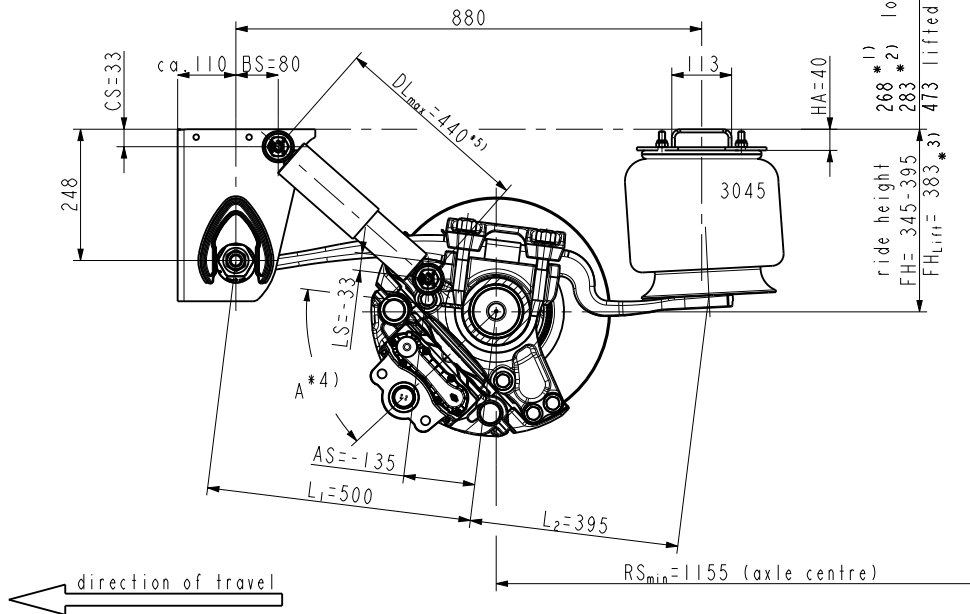
- * 1) laden, without air
- * 2) unladen, without air
- * 3) FH_{Lift}=383 mm
minimum acceptable height with axle lift
(theoretical distance Tire-Road = 100mm)
- * 4) -Twinlift No.
only for A=50°: 700631370
- * 5) Just for raising and lowering (HS) locking valve to be adjusted that air supply is stopped at DL_{max}=440.
- * 6) space requirement
- * 7) Low ground clearance for brake cylinder with A=50°

Recommendation side support
Details see Installation Instructions



not part of normal delivery

Test report:
361-037-13 (4345 KNORR)



No.	track	A	FM	KMAT		weight kg (±2%)	TB max.	recommendation for single mount
					ABS			
1	2040	50°*7)	1200		793012569	437	410	385/65 R22,5
								Take care of sufficient tyre load capacity

OBSERVE INSTALLATION INSTRUCTIONS !!!

gigant

TRENKAMP & GEHLE GmbH
D-49413 Dinklage

Draw.-no.: 793012567

Index
0