

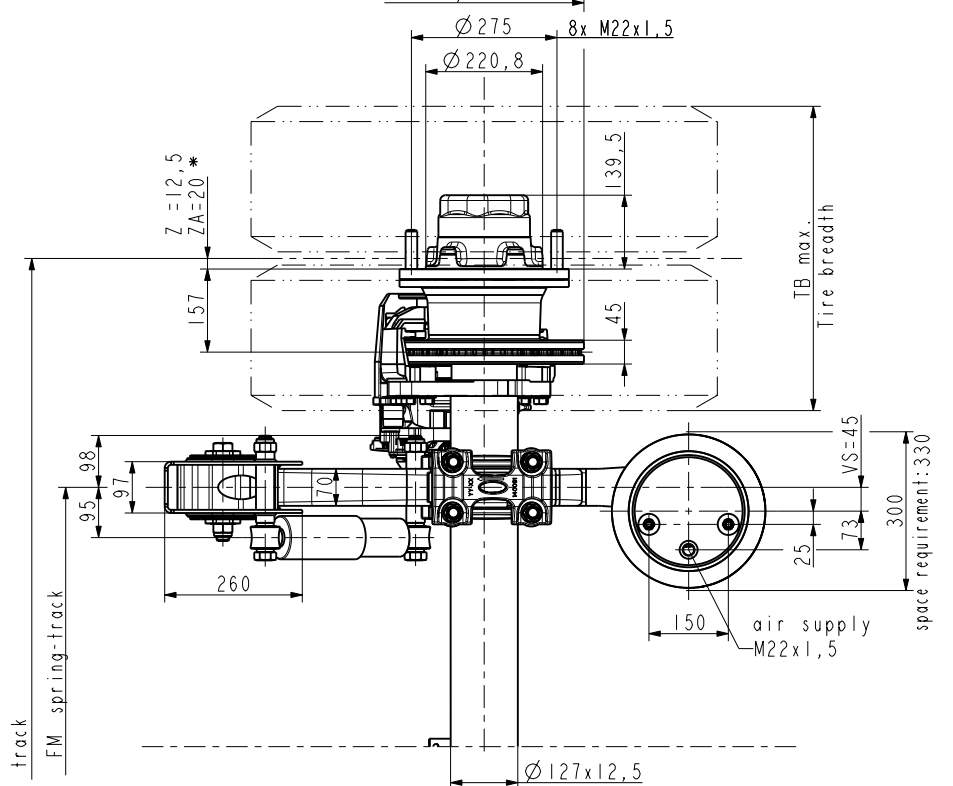
**axle load:**

**max. 9000 kg at 105 km/h**

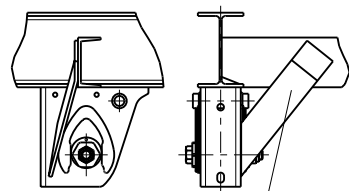
(depend on spring track and centre of gravity height)

Lift in total: 190 mm at FH<sub>OL</sub> <sup>\*2)</sup>

- \* 1) laden, without air
- \* 2) unladen, without air
- \* 3) FH<sub>Lift</sub>=290 mm  
minimum acceptable height with axle lift  
(theoretical distance Tire-Road = 100mm)
- \* 4) -Twinlift No.  
only for A=50°: 700631370
- \* 5) Just for raising and lowering (HS) locking valve to be adjusted that air supply is stopped at DL<sub>max</sub>=375.
- \* 6) Low ground clearance for brake cylinder.



**Recommendation side support**  
Details see Installation Instructions



not part of normal delivery

**Test report:**  
361-080-13 (3745 KNORR)

No.	track	A	FM	KMAT		weight kg (±2%)	TB max.	recommendation for twin mount
					ABS			
1	1845*	50°* <sup>6)</sup>	980		793012233	399	595	265/70 R19,5*

\* on alu rim  
Take care of sufficient tyre load capacity

**OBSERVE INSTALLATION INSTRUCTIONS !!!**

**gigant**  
TRENKAMP & GEHLE GmbH  
D-49413 Dinklage

Draw.-no.: 793012232 Index  
1