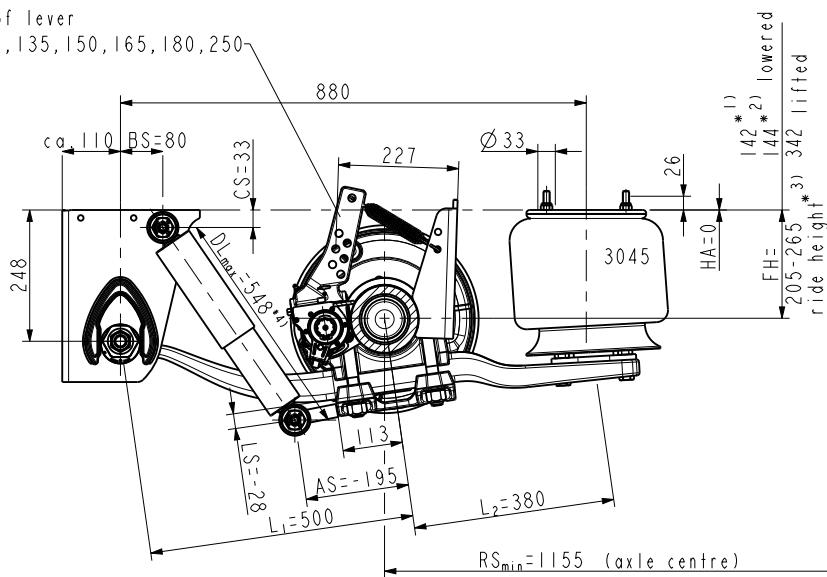


ride height (FH)

GKH3 090 TKLRM 50.38/9.1 GL70 3053 VS45 205-265

length of lever  
105, 120, 135, 150, 165, 180, 250



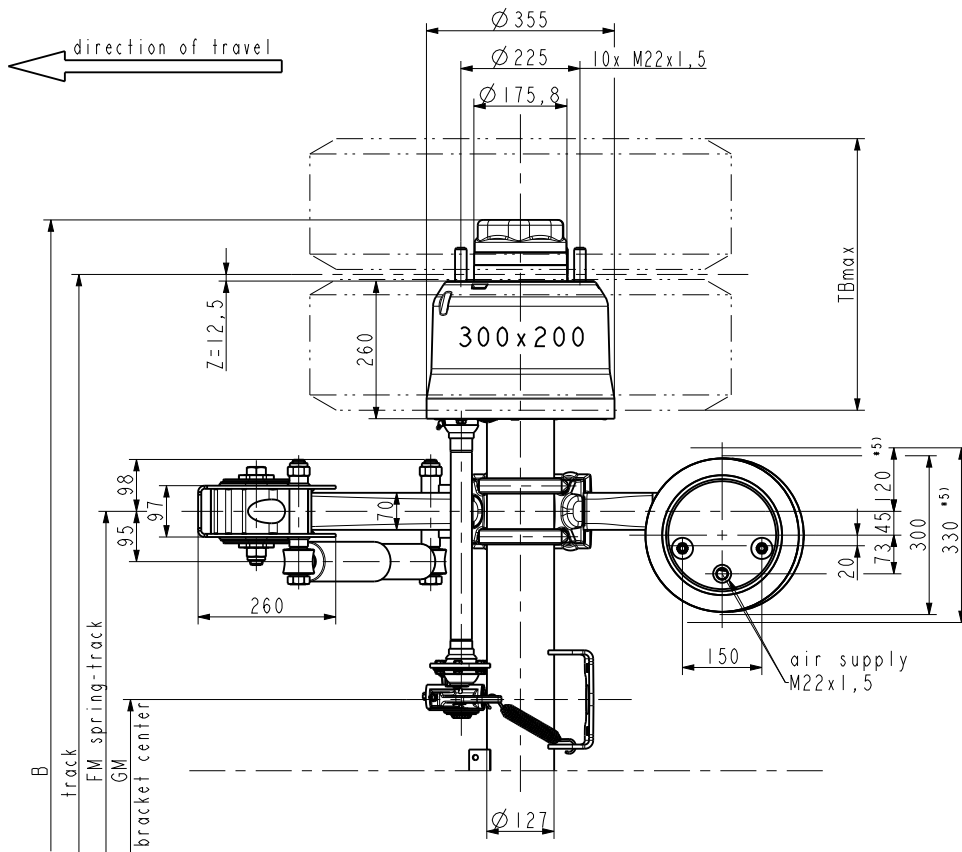
axle load:

max. 9000 kg at 105 km/h

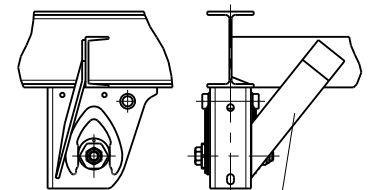
(depend on spring track and centre of gravity height)

lift in total: 198 mm at FH<sub>ol</sub> \*2)

- \* 1) laden, without air
- \* 2) unladen, without air
- \* 3) FH<sub>Lift</sub>=244 mm  
minimum acceptable height with axle lift
- \* 4) Just for raising and lowering (HS) locking valve to be adjusted that air supply is stopped at DL<sub>max</sub>=548.
- \* 5) space requirement



Recommendation side support



not part of normal delivery

Test report: 361-008-07

Track	FM	GM	B	KMAT		weight kg (±2%)	recommendation for twin mount	TB <sub>max</sub>
				AGS	ABS+AGS			
1875	980	269	2081	793012670	793012671	428	235/75 R17,5	625

OBSERVE INSTALLATION INSTRUCTIONS !!!



TRENKAMP & GEHLE GmbH  
D-49413 Dinklage

Draw.-no.: 793012669 Index 0

Take care of sufficient tyre load capacity