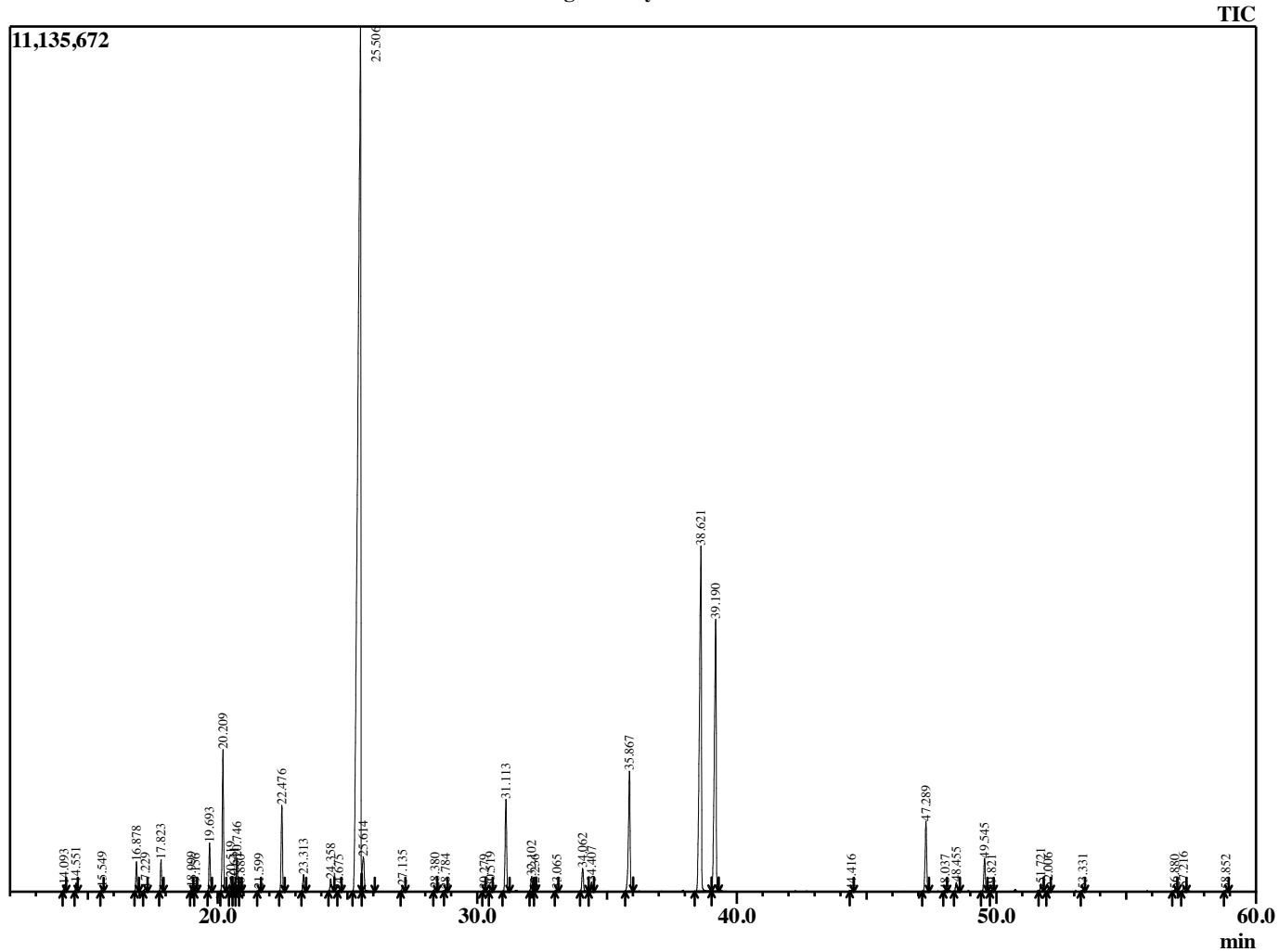


Sample Information

Analyzed by : B. Harris
 Analyzed : 8/27/2015 6:07:46 PM
 Sample Type : Essential Oil
 Sample Name : ThyVul3
 Lot Number : 16529
 Injection Volume : 0.10

Chromatogram ThyVul3 Lot 16529



R.Time	Name	Area%
14.093	Thujene <alpha>	0.15
14.551	Pinene <alpha>	0.18
15.549	Camphene	0.09
16.878	Sabinene	0.70
17.229	Pinene <beta>	0.12
17.823	Myrcene	0.73
18.999	Phellandrene <alpha>	0.09
19.156	3-Carene	0.05
19.693	Terpinene <alpha>	1.19
20.209	Cymene <para>	3.48
20.519	Limonene	0.36
20.641	Phellandrene <beta>	0.24
20.746	1,8-Cineole	0.82
20.880	Ocimene <Z-beta>	0.03
21.599	Ocimene <E-beta>	0.06
22.476	Terpinene <gamma>	2.28
23.313	4-Thujanol <trans>	0.47
24.358	Terpinolene	0.45
24.675	Dehydro-p-cymene	0.03
25.506	Linalool	50.85
25.614	Sabinene hydrate <trans>	1.35
27.135	Menth-2-en-1-ol <cis-p>	0.16
28.380	Menth-2-en-1-ol <trans-p>	0.10
28.784	Camphor	0.06
30.279	Thujen-2-one	0.06
30.519	Borneol	0.12
31.113	Terpinen-4-ol	2.75
32.102	Terpineol <alpha>	0.46
32.236	Piperitol <cis>	0.03
33.065	Piperitol <trans>	0.05
34.062	Nerol	0.74
34.407	Methyl thymol ether	0.28
35.867	Geraniol	4.02
38.621	Thymol	13.40
39.190	Carvacrol	9.82
44.416	Copaene <alpha>	0.03
47.289	Caryophyllene <trans>	2.14
48.037	Bergamotene <trans-alpha>	0.04
48.455	Copaene <beta>	0.30
49.545	Humulene <alpha>	1.02
49.821	Alloaromadendrene	0.04
51.721	Viridiflorene	0.23
52.006	Bicyclogermacrene	0.11
53.331	Amorphene <delta>	0.07
56.880	Spathulenol	0.06
57.216	Caryophyllene oxide	0.14
58.852	Humulene epoxide II	0.05
		100.00