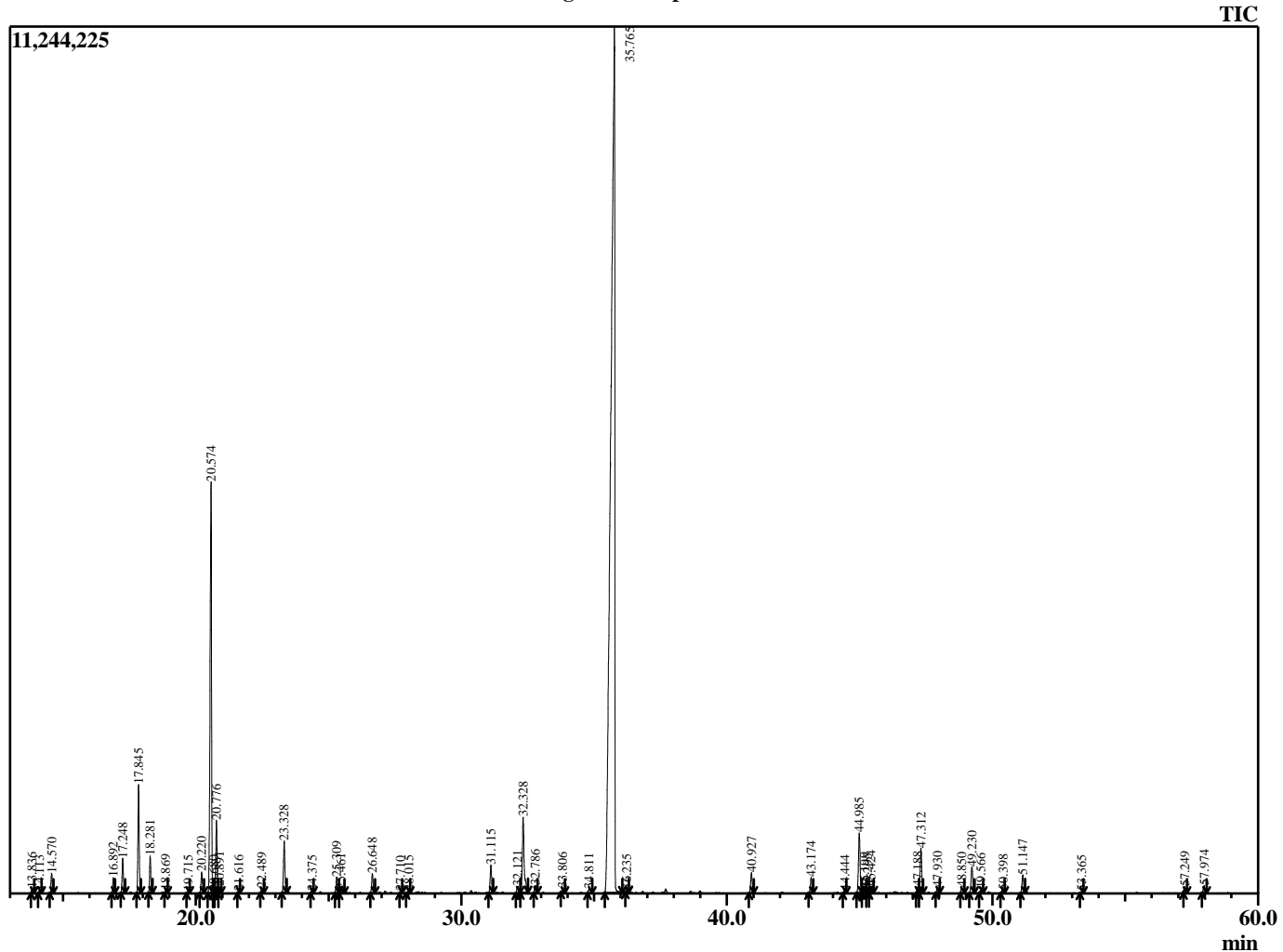


Sample Information

Analyzed by : B. Harris
 Analyzed : 8/4/2015 2:46:48 PM
 Sample Type : Essential Oil
 Sample Name : MenSpi2
 Lot Number : 16746
 Injection Volume : 0.10

Chromatogram MenSpi2 Lot 16746



R.Time	Name	Area%
13.836	Pinene isomer	0.12
14.113	Thujene <alpha->	0.05
14.570	Pinene <alpha->	0.45
16.892	Sabinene	0.37
17.248	Pinene <beta->	0.84
17.845	Myrcene	2.60
18.281	3-Octanol	0.86
18.869	Pseudolimonene	0.06
19.715	Terpinene <alpha->	0.04
20.220	Cymene <para->	0.54
20.574	Limonene	11.59
20.680	Phellandrene <beta->	0.04
20.776	1,8-Cineole	1.80
20.891	Ocimene <Z-beta->	0.15
21.616	Ocimene <E-beta->	0.05
22.489	Terpinene <gamma->	0.13
23.328	Sabinene hydrate <cis->	1.37
24.375	Terpinolene	0.05
25.309	Linalool	0.45
25.461	Sabinene hydrate <trans->	0.15
26.648	3-Octyl acetate	0.52
27.710	Limonene oxide <cis->	0.04
28.015	Limonene oxide <trans->	0.06
31.115	Terpinen-4-ol	0.79
32.121	Terpineol <alpha->	0.23
32.328	Carvone <(Z)-, dihydro->	2.70
32.786	Carvone <(E)-, dihydro->	0.21
33.806	Carveol <trans->	0.13
34.811	Carveol <cis->	0.21
35.765	L-Carvone	65.80
36.235	Piperitone	0.07
40.927	Dihydrocarvyl acetate	0.61
43.174	Carveol acetate <trans->	0.45
44.444	Cubebene <alpha->	0.08
44.985	Bourbonene <beta->	1.87
45.199	Bourbonene <alpha->	0.14
45.295	Elemene <beta->	0.09
45.424	Jasmone <cis->	0.22
47.188	Ylangene <beta->	0.18
47.312	Caryophyllene <trans->	1.38
47.930	Copaene <beta->	0.19
48.850	Guanidiene <6,9->	0.17
49.230	Farnesene<(E)-beta->	0.86
49.566	Humulene <alpha->	0.12
50.398	Cadina-1(6),4-diene <trans->	0.11
51.147	Germacrene D	0.57
53.365	Cadinene <delta->	0.04
57.249	Caryophyllene oxide	0.21
57.974	Viridiflorol	0.23
		100.00