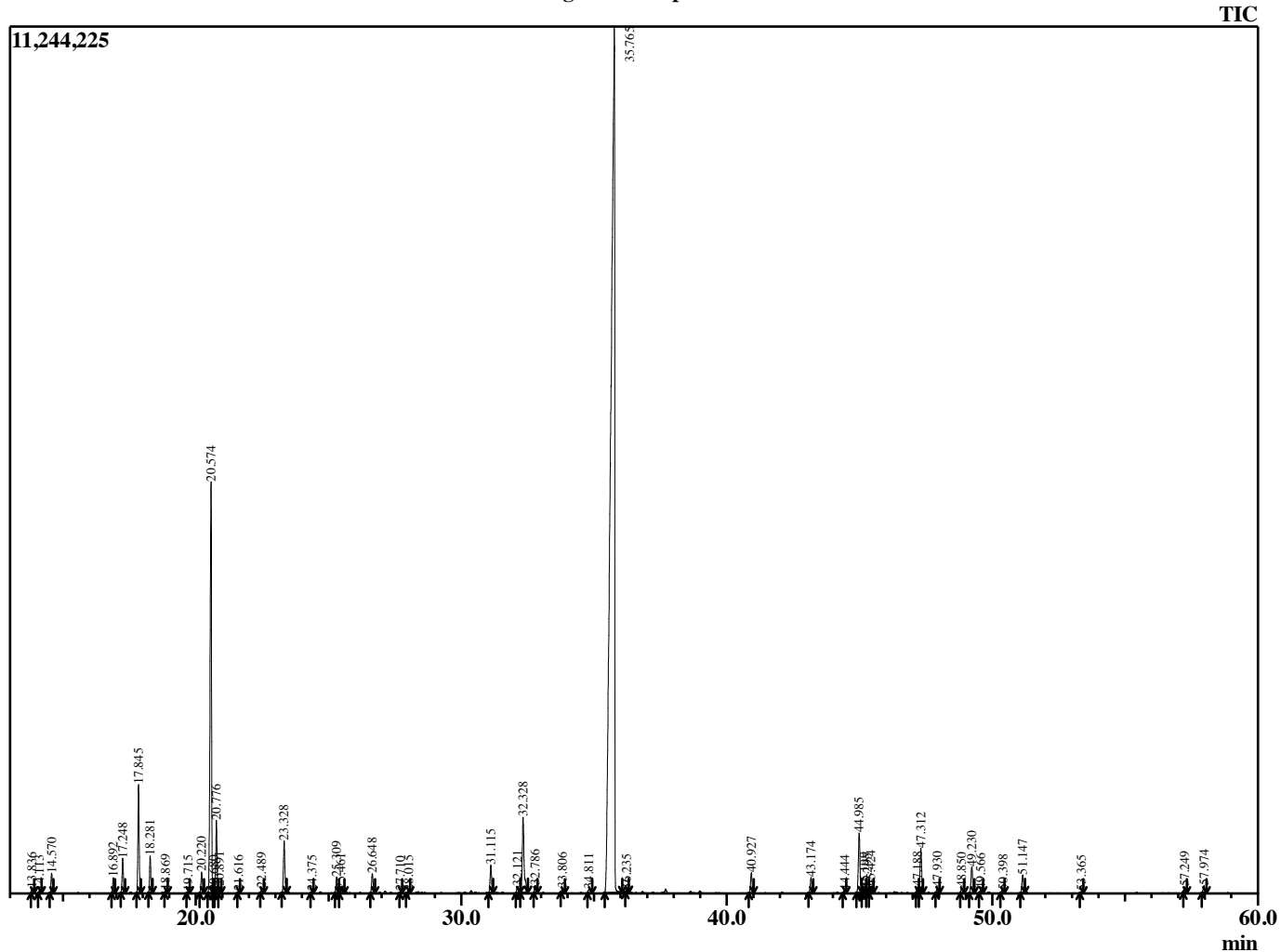


Sample Information

Analyzed by : B. Harris  
 Analyzed : 8/4/2015 2:46:48 PM  
 Sample Type : Essential Oil  
 Sample Name : MenSpi2  
 Lot Number : 16746  
 Injection Volume : 0.10

Chromatogram MenSpi2 Lot 16746



R.Time	Name	Area%
13.836	Pinene isomer	0.12
14.113	Thujene <alpha>	0.05
14.570	Pinene <alpha>	0.45
16.892	Sabinene	0.37
17.248	Pinene <beta>	0.84
17.845	Myrcene	2.60
18.281	3-Octanol	0.86
18.869	Pseudolimonene	0.06
19.715	Terpinene <alpha>	0.04
20.220	Cymene <para>	0.54
20.574	Limonene	11.59
20.680	Phellandrene <beta>	0.04
20.776	1,8-Cineole	1.80
20.891	Ocimene <Z-beta>	0.15
21.616	Ocimene <E-beta>	0.05
22.489	Terpinene <gamma>	0.13
23.328	Sabinene hydrate <cis>	1.37
24.375	Terpinolene	0.05
25.309	Linalool	0.45
25.461	Sabinene hydrate <trans>	0.15
26.648	3-Octyl acetate	0.52
27.710	Limonene oxide <cis>	0.04
28.015	Limonene oxide <trans>	0.06
31.115	Terpinen-4-ol	0.79
32.121	Terpineol <alpha>	0.23
32.328	Carvone <(Z)-, dihydro>	2.70
32.786	Carvone <(E)-, dihydro>	0.21
33.806	Carveol <trans>	0.13
34.811	Carveol <cis>	0.21
35.765	L-Carvone	65.80
36.235	Piperitone	0.07
40.927	Dihydrocarvyl acetate	0.61
43.174	Carveol acetate <trans>	0.45
44.444	Cubebene <alpha>	0.08
44.985	Bourbonene <beta>	1.87
45.199	Bourbonene <alpha>	0.14
45.295	Elemene <beta>	0.09
45.424	Jasmone <cis>	0.22
47.188	Ylangene <beta>	0.18
47.312	Caryophyllene <trans>	1.38
47.930	Copaene <beta>	0.19
48.850	Guanidiene <6,9>	0.17
49.230	Farnesene <(E)-beta>	0.86
49.566	Humulene <alpha>	0.12
50.398	Cadina-1(6),4-diene <trans>	0.11
51.147	Germacrene D	0.57
53.365	Cadinene <delta>	0.04
57.249	Caryophyllene oxide	0.21
57.974	Viridiflorol	0.23
		100.00