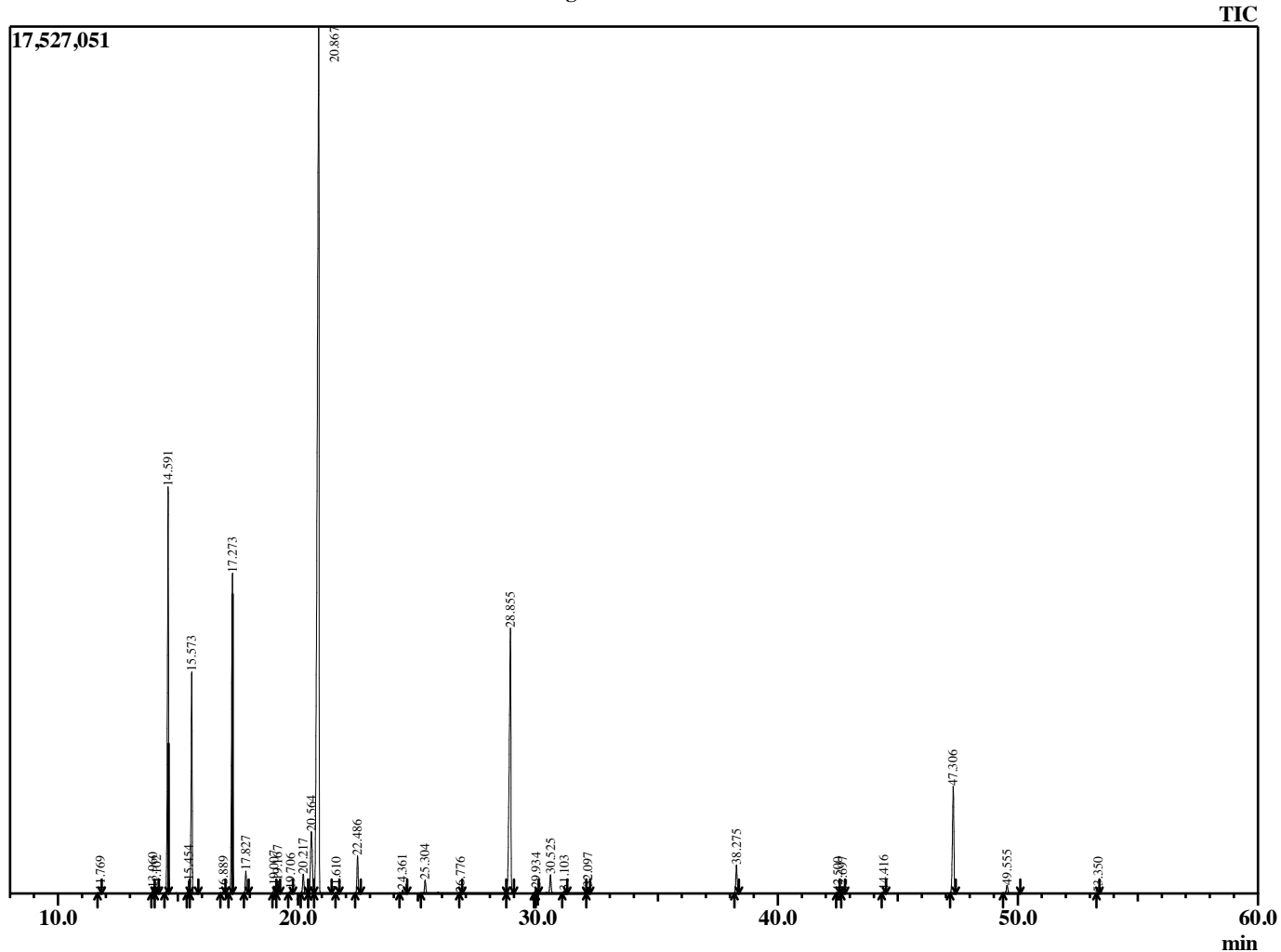


Sample Information

Analyzed by : B. Harris
 Analyzed : 9/1/2015 4:51:33 PM
 Sample Type : Essential Oil
 Sample Name : RosOff2
 Lot Number : 19371
 Injection Volume : 0.10

Chromatogram RosOff2 Lot 19371



R.Time	Name	Area%
11.769	Santene	0.06
13.960	Tricyclene	0.14
14.102	Thujene <alpha->	0.07
14.591	Pinene <alpha->	12.37
15.454	Fenchene <alpha->	0.40
15.573	Camphene	6.63
16.889	Sabinene	0.04
17.273	Pinene <beta->	8.86
17.827	Myrcene	0.70
19.007	Phellandrene <alpha->	0.24
19.167	3-Carene	0.39
19.706	Terpinene <alpha->	0.13
20.217	Cymene <para->	0.75
20.564	Limonene	3.21
20.867	1,8-Cineole	44.35
21.610	Ocimene <E-beta->	0.03
22.486	Terpinene <gamma->	1.27
24.361	Terpinolene	0.13
25.304	Linalool	0.67
26.776	Fenchol <alpha->	0.02
28.855	Camphor	12.10
29.934	Isoborneol	0.16
30.525	Borneol	0.91
31.103	Terpinen-4-ol	0.09
32.097	Terpineol <alpha->	0.22
38.275	Bornyl acetate	1.06
42.500	Cubebene <alpha->	0.03
42.697	Eugenol	0.05
44.416	Copaene <alpha->	0.12
47.306	Caryophyllene <trans->	4.40
49.555	Humulene <alpha->	0.35
53.350	Cadinene <delta->	0.02
		100.00