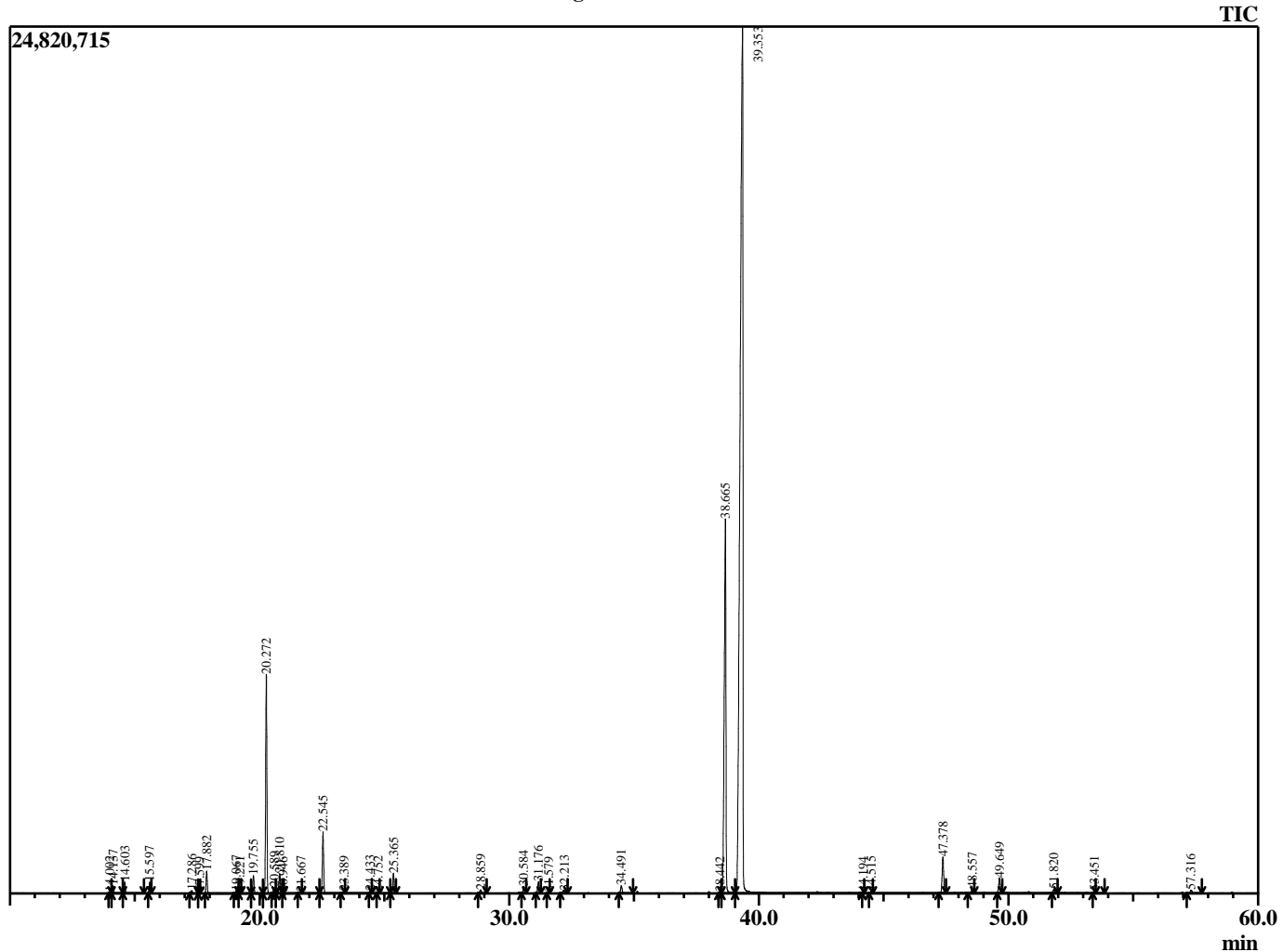


Sample Information

Analyzed by : B. Harris  
 Analyzed : 2/17/2015 10:04:29 AM  
 Sample Type : Essential Oil  
 Sample Name : OriVul3  
 Lot Number : 9635  
 Injection Volume : 0.10

Chromatogram OriVul3 Lot 9635



R.Time	Name	Area%
14.002	Tricyclene	0.04
14.137	Thujene <alpha>	0.23
14.603	Pinene <alpha>	0.36
15.597	Camphene	0.33
17.286	Pinene <beta>	0.13
17.599	3-Octanone	0.02
17.882	Myrcene	0.74
19.067	Phellandrene <alpha>	0.08
19.221	3-Carene	0.05
19.755	Terpinene <alpha>	0.59
20.272	Cymene <para>	7.10
20.589	Limonene	0.18
20.810	1,8-Cineole	0.71
20.946	Ocimene <E-beta>	0.02
21.667	Carene <delta-3>	0.03
22.545	Terpinene <gamma>	2.11
23.389	4-Thujanol <trans>	0.06
24.433	Terpinolene	0.06
24.752	Dehydro-p-cymene	0.04
25.365	Linalool	0.70
28.859	Camphor	0.17
30.584	Borneol	0.27
31.176	Terpinen-4-ol	0.44
31.579	Cymen-8-ol <para>	0.04
32.213	Terpineol <alpha>	0.15
34.491	Methyl carvacryl ether	0.34
38.442	Bornyl acetate	0.03
38.665	Thymol	16.73
39.353	Carvacrol	65.48
44.194	Isoledene	0.02
44.515	Copaene <alpha>	0.05
47.378	Caryophyllene <trans>	1.48
48.557	Alloaromadendrene	0.21
49.649	Humulene <alpha>	0.64
51.820	Viridiflorene (Ledene)	0.17
53.451	Cadinene <delta>	0.06
57.316	Caryophyllene oxide	0.14
		100.00