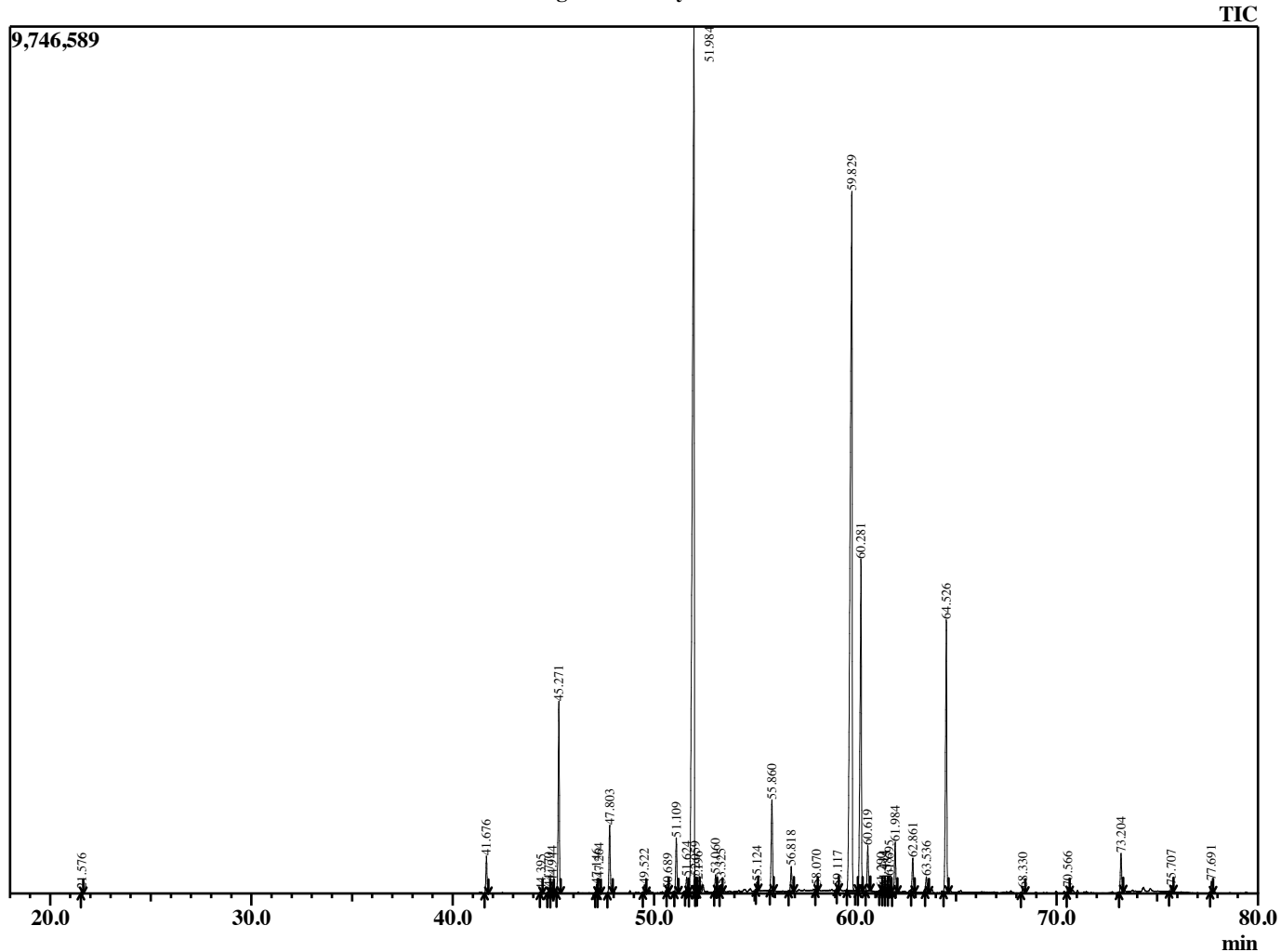


Sample Information

Analyzed by : B. Harris
 Analyzed : 7/12/2016 1:08:24 PM
 Sample Type : Essential Oil
 Sample Name : ComMyr9
 Lot Number : 31664
 Injection Volume : 0.10

Chromatogram ComMyr9 Lot 31664



R.Time	Name	Area%
21.576	Ocimene <E-beta>	0.08
41.676	Elemene <delta->	0.86
44.395	Copaene <alpha>	0.06
44.770	Elemene isomer	0.12
44.944	Bourbonene <beta>	0.28
45.271	Elemene <beta>	4.61
47.146	Ylangene <beta>	0.21
47.264	Caryophyllene <trans>	0.37
47.803	Elemene <gamma>	1.71
49.522	Humulene <alpha>	0.21
50.689	Cadina-1(6),4-diene <trans>	0.05
51.109	Germacrene D	1.36
51.624	Selinene <beta>	0.36
51.984	Curzerene	33.84
52.059	Selinene <alpha>	0.30
52.196	Bisabolene <alpha>	0.12
53.060	Cadinene <gamma>	0.37
53.325	Cadinene <delta>	0.17
55.124	Elemol <alpha>	0.18
55.860	Germacrene B	2.36
56.818	Furanodiene	0.64
58.070	Elemenone <trans-beta>	0.12
59.117	Cubenol <1-epi>	0.06
59.829	Furanoedesma-1,3-diene	28.80
60.281	Lindestrene	9.10
60.619	Cadinol <epi-alpha>	1.17
61.290	Furanodiene isomer	0.09
61.414	Eudesmol <alpha>	0.17
61.585	Intermedeol <neo>	0.13
61.695	Furanoedesma-1,4-diene	0.47
61.984	Intermedeol	1.30
62.861	2-Methoxyfuranodiene A	0.86
63.536	Germacrene	0.43
64.526	2-Methoxyfuranodiene B	7.33
68.330	Furanoedesmadiene <isomer>	0.15
70.566	Furanodiene <2-acetoxy> isomer	0.13
73.204	Furanodiene <2-acetoxy>	1.01
75.707	Furanodiene <acetoxy> isomer	0.14
77.691	Myrrh unknown	0.26
		100.00

© Copyright 2016 The Perfumery, All rights reserved.

This report is provided as a courtesy to our customers for their evaluation only. Any publishing, copying, use, dissemination, or distribution of this report, including online, without the express written permission of The Perfumery is strictly prohibited. To inquire about licensing analytical reporting services, please contact orders@theparfumery.com.