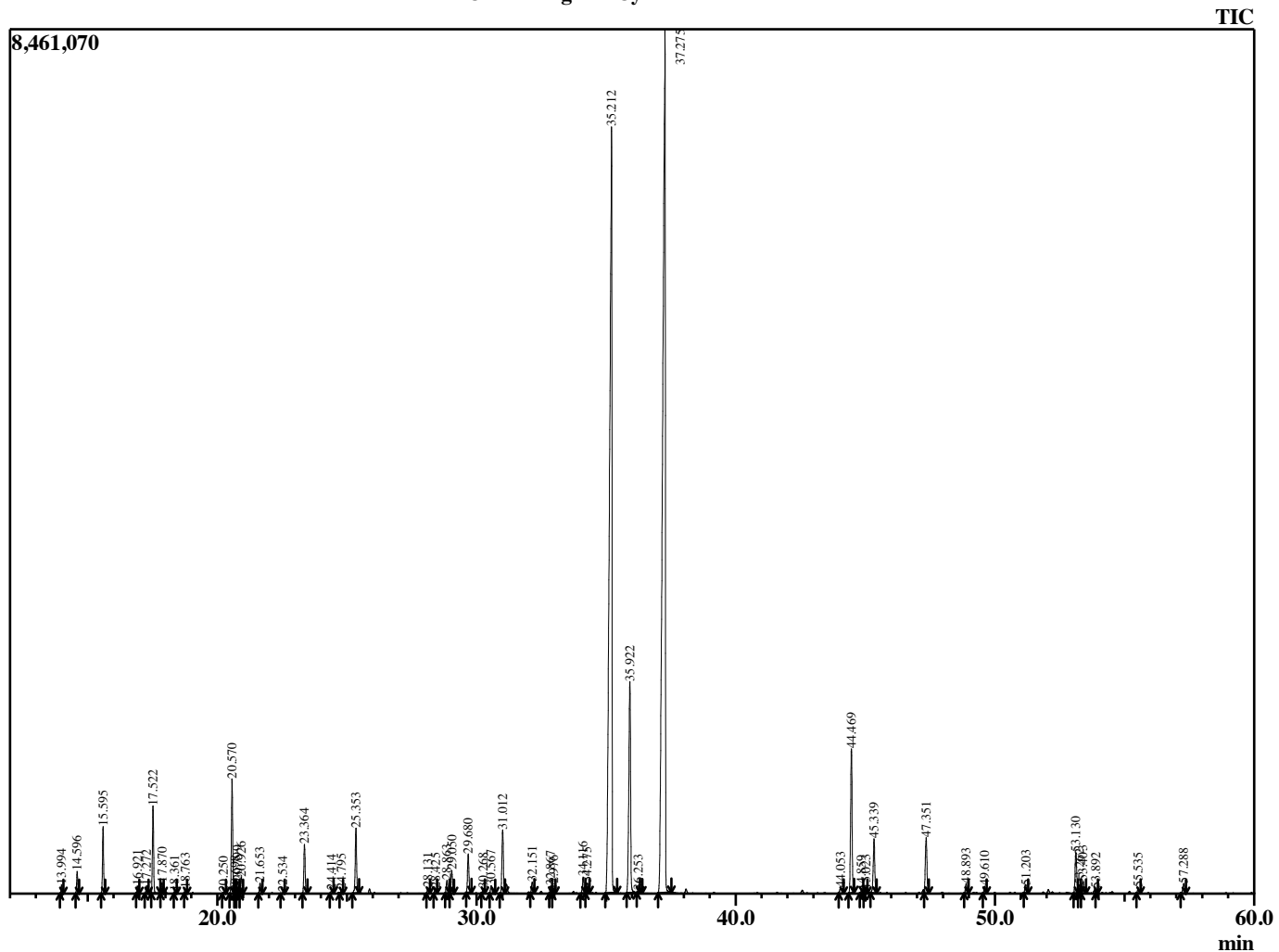


Sample Information

Analyzed by : B. Harris  
 Analyzed : 6/9/2015 5:30:51 PM  
 Sample Type : Essential Oil  
 Sample Name : CymFle2  
 Lot Number : 16103  
 Injection Volume : 0.10

Chromatogram CymFle2 Lot 16103



R.Time	Name	Area%
13.994	Tricyclene	0.15
14.596	Pinene <alpha>	0.40
15.595	Camphene	1.25
16.921	Sabinene	0.14
17.272	Pinene <beta>	0.16
17.522	Hept-5-en-2-one <6-methyl->	1.75
17.870	Myrcene	0.22
18.361	Hex-3(Z)-enyl formate<>	0.05
18.763	Octanal	0.09
20.250	Cymene <para->	0.03
20.570	Limonene	2.38
20.698	Phellandrene <beta>	0.04
20.799	1,8-Cineole	0.27
20.926	Ocimene <Z-beta>	0.34
21.653	Ocimene <E-beta>	0.22
22.534	Terpinene <gamma->	0.02
23.364	4-Nonanone	1.07
24.414	Terpinolene	0.08
24.795	Naginatene <alpha>	0.08
25.353	Linalool	1.50
28.131	Chrysanthamal <cis>	0.13
28.425	epiphotocitral A	0.11
28.863	Chrysanthamal <trans>	0.31
29.050	Citronellal	0.55
29.680	Chrysanthenol<cis>	0.90
30.268	Isoborneol	0.12
30.567	Borneol	0.20
31.012	Isocitral <trans>	1.57
32.151	Terpineol <alpha->	0.28
32.867	Decanal	0.15
32.976	Carveol <cis>	0.06
34.116	Nerol	0.42
34.275	Citronellol	0.28
35.212	Neral	30.66
35.922	Geraniol	6.13
36.253	Piperitone	0.06
37.275	Geranial	38.23
44.053	Isoledene	0.22
44.469	Geranyl acetate	3.52
44.859	Elemene <beta>	0.05
45.023	Bourbonene <beta>	0.08
45.339	Elemene <beta>	1.41
47.351	Caryophyllene <trans>	1.50
48.893	Isoeugenol	0.26
49.610	Humulene <alpha>	0.17
51.203	Germacrene D	0.24
53.130	Cadinene <gamma>	1.11
53.262	Cadinene <beta>	0.22
53.403	Cadinene <delta>	0.31
53.892	Bisabolene <E-gamma>	0.08
55.535	Geranyl butyrate	0.14
57.288	Caryophyllene oxide	0.30
		100.00