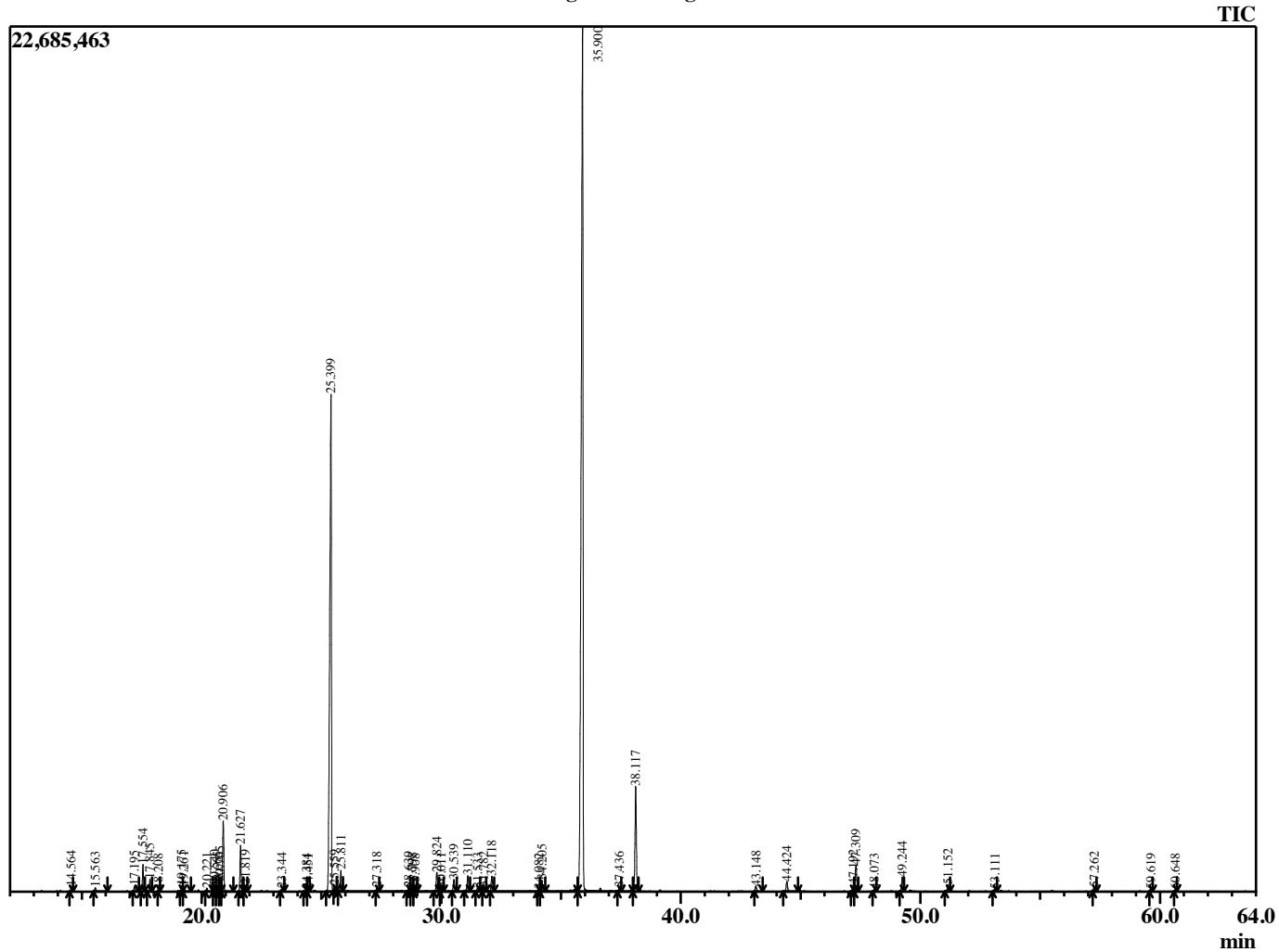


Sample Information

Analyzed by : B. Harris  
 Analyzed : 4/13/2015 11:34:41 PM  
 Sample Type : Essential Oil  
 Sample Name : LavAng2  
 Lot Number : 5929  
 Injection Volume : 0.10

Chromatogram LavAng2 Lot 5929



R.Time	Name	Area%
14.564	Pinene <alpha>	0.16
15.563	Camphene	0.13
17.195	1-Octen-3-ol	0.25
17.554	3-Octanone	0.93
17.845	Myrcene	0.44
18.208	Butyl butanoate	0.07
19.175	3-Carene	0.19
19.261	Hexyl acetate	0.17
20.221	Cymene <para->	0.13
20.540	Limonene	0.24
20.665	Phellandrene <beta>	0.16
20.765	1,8-cineole	0.35
20.906	Ocimene <Z-beta>	2.67
21.627	Ocimene <E-beta>	1.72
21.819	Isobutyl angelate	0.23
23.344	Linalool oxide <cis>	0.12
24.384	Terpinolene	0.08
24.451	Linalool oxide <trans->	0.10
25.399	Linalool	27.14
25.559	Methyl butyl-2-methyl butyrate <2>	0.16
25.811	Octen-3-yl acetate<1>	0.77
27.318	Ocimene <allo>	0.15
28.639	Isoamyl angelate	0.16
28.798	Camphor	0.13
28.908	Isoamyl tiglate	0.10
29.824	Lavandulol	0.83
30.011	Menthone	0.15
30.539	Borneol	0.54
31.110	Terpinen-4-ol	0.73
31.533	Cryptone	0.17
31.782	Hexyl butanoate	0.20
32.118	Terpineol <alpha->	0.68
34.082	Nerol	0.09
34.205	Citronellol	0.54
35.900	Linalyl acetate	50.95
37.436	Citronellyl formate	0.16
38.117	Lavandulyl acetate	4.49
43.148	Neryl acetate	0.24
44.424	Geranyl acetate	0.46
47.192	Santalene <alpha->	0.29
47.309	Caryophyllene <trans-alpha>	1.26
48.073	Bergamotene <trans-alpha>	0.10
49.244	Farnesene <(E)-, beta->	0.64
51.152	Germacrene D	0.29
53.111	Cadinene <gamma->	0.09
57.262	Caryophyllene oxide	0.20
59.619	Eudesmol <gamma->	0.11
60.648	Cadinol <epi-alpha>	0.07
		100.00