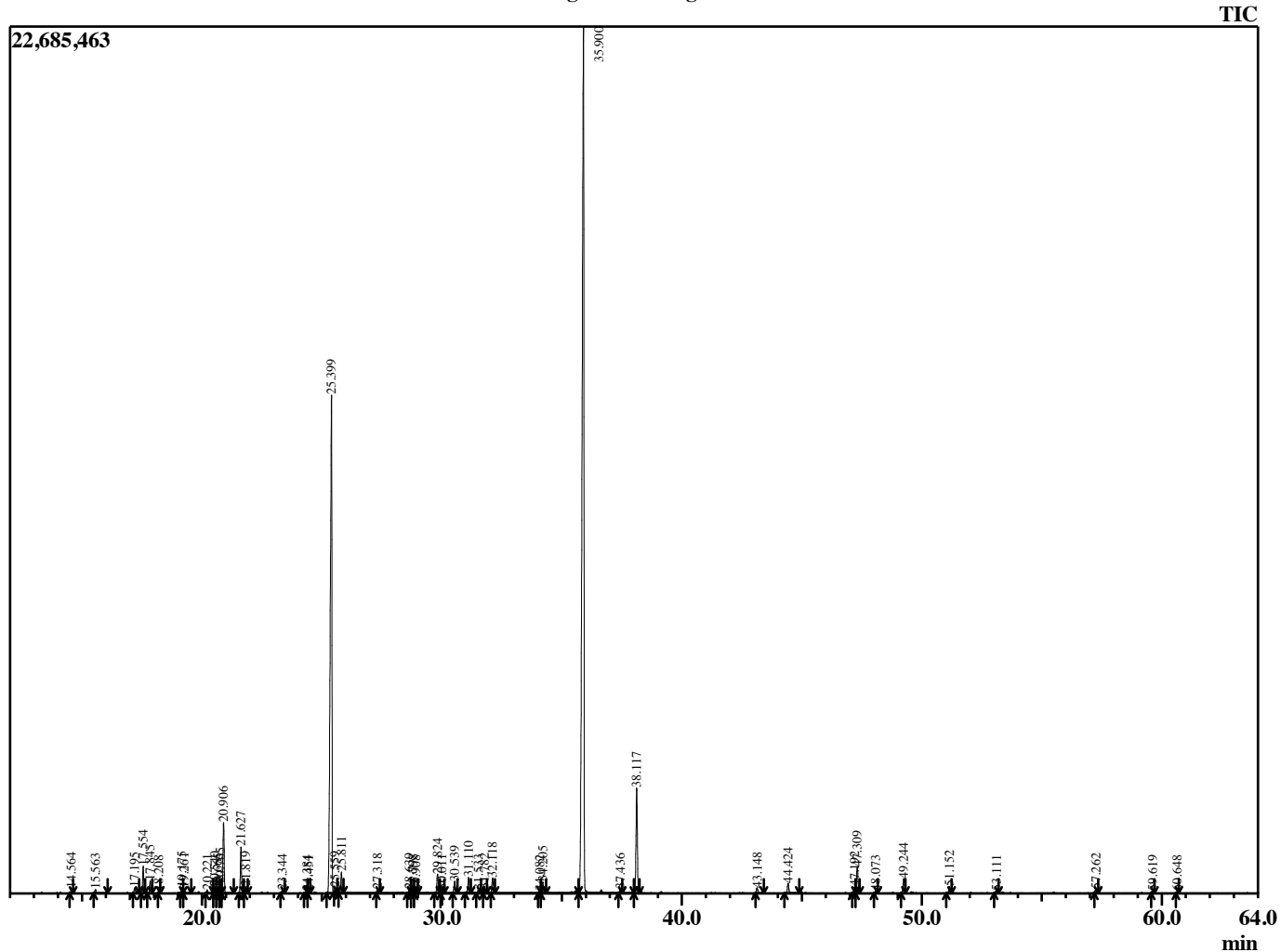


Sample Information

Analyzed by : B. Harris  
 Analyzed : 4/13/2015 11:34:41 PM  
 Sample Type : Essential Oil  
 Sample Name : LavAng2  
 Lot Number : 5929  
 Injection Volume : 0.10

Chromatogram LavAng2 Lot 5929



| R.Time | Name                               | Area%  |
|--------|------------------------------------|--------|
| 14.564 | Pinene <alpha>                     | 0.16   |
| 15.563 | Camphene                           | 0.13   |
| 17.195 | 1-Octen-3-ol                       | 0.25   |
| 17.554 | 3-Octanone                         | 0.93   |
| 17.845 | Myrcene                            | 0.44   |
| 18.208 | Butyl butanoate                    | 0.07   |
| 19.175 | 3-Carene                           | 0.19   |
| 19.261 | Hexyl acetate                      | 0.17   |
| 20.221 | Cymene <para->                     | 0.13   |
| 20.540 | Limonene                           | 0.24   |
| 20.665 | Phellandrene <beta>                | 0.16   |
| 20.765 | 1,8-cineole                        | 0.35   |
| 20.906 | Ocimene <Z-beta>                   | 2.67   |
| 21.627 | Ocimene <E-beta>                   | 1.72   |
| 21.819 | Isobutyl angelate                  | 0.23   |
| 23.344 | Linalool oxide <cis>               | 0.12   |
| 24.384 | Terpinolene                        | 0.08   |
| 24.451 | Linalool oxide <trans->            | 0.10   |
| 25.399 | Linalool                           | 27.14  |
| 25.559 | Methyl butyl-2-methyl butyrate <2> | 0.16   |
| 25.811 | Octen-3-yl acetate<1>              | 0.77   |
| 27.318 | Ocimene <allo>                     | 0.15   |
| 28.639 | Isoamyl angelate                   | 0.16   |
| 28.798 | Camphor                            | 0.13   |
| 28.908 | Isoamyl tiglate                    | 0.10   |
| 29.824 | Lavandulol                         | 0.83   |
| 30.011 | Menthone                           | 0.15   |
| 30.539 | Borneol                            | 0.54   |
| 31.110 | Terpinen-4-ol                      | 0.73   |
| 31.533 | Cryptone                           | 0.17   |
| 31.782 | Hexyl butanoate                    | 0.20   |
| 32.118 | Terpineol <alpha->                 | 0.68   |
| 34.082 | Nerol                              | 0.09   |
| 34.205 | Citronellol                        | 0.54   |
| 35.900 | Linalyl acetate                    | 50.95  |
| 37.436 | Citronellyl formate                | 0.16   |
| 38.117 | Lavandulyl acetate                 | 4.49   |
| 43.148 | Neryl acetate                      | 0.24   |
| 44.424 | Geranyl acetate                    | 0.46   |
| 47.192 | Santalene <alpha->                 | 0.29   |
| 47.309 | Caryophyllene <trans-alpha>        | 1.26   |
| 48.073 | Bergamotene <trans-alpha>          | 0.10   |
| 49.244 | Farnesene <(E)-, beta->            | 0.64   |
| 51.152 | Germacrene D                       | 0.29   |
| 53.111 | Cadinene <gamma->                  | 0.09   |
| 57.262 | Caryophyllene oxide                | 0.20   |
| 59.619 | Eudesmol <gamma->                  | 0.11   |
| 60.648 | Cadinol <epi-alpha>                | 0.07   |
|        |                                    | 100.00 |