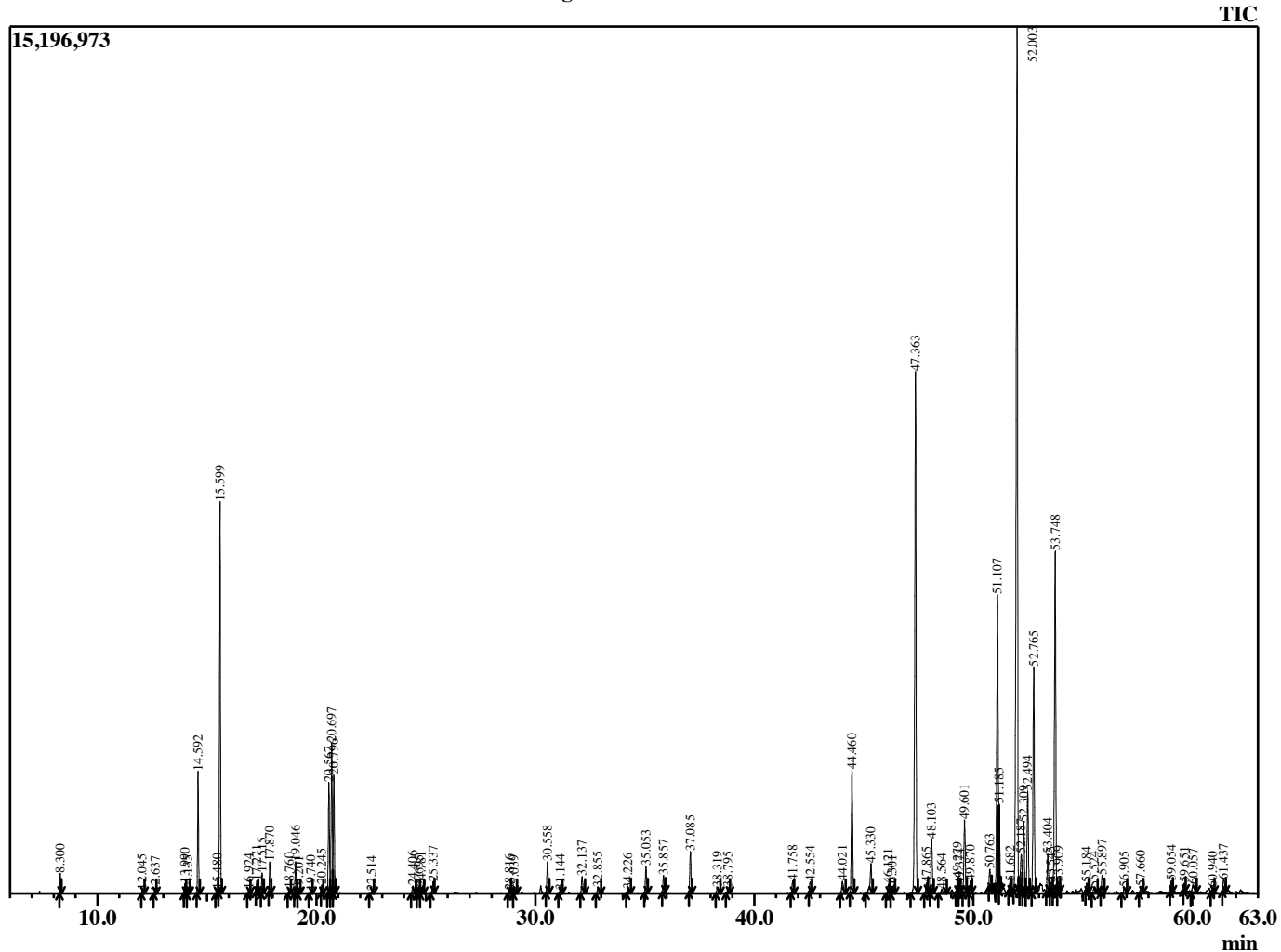


Sample Information

Analyzed by : B. Harris  
 Analyzed : 4/15/2015 12:35:37 AM  
 Sample Type : Essential Oil  
 Sample Name : ZinOff1  
 Lot Number : 144158  
 Injection Volume : 0.10

Chromatogram ZinOff1 Lot 144158



R.Time	Name	Peak Report TIC	Area%
8.300	Hexanal		0.24
12.045	2-Heptanone		0.07
12.637	2-Heptanol		0.04
13.990	Tricyclene		0.15
14.135	Thujene <alpha>		0.04
14.592	Pinene <alpha>		2.02
15.480	Fenchene <alpha>		0.06
15.599	Camphene		6.72
16.924	Sabinene		0.08
17.271	Pinene <beta>		0.17
17.515	5-Hepten-2-one, 6-methyl-		0.34
17.870	Myrcene		0.54
18.760	Octanal		0.09
19.046	Phellandrene <alpha>		0.60
19.201	3-Carene		0.02
19.740	Terpinene <alpha>		0.05
20.245	Cymene <para>		0.14
20.567	Limonene		2.21
20.697	Phellandrene <beta>		3.01
20.796	1,8-cineole		2.32
22.514	Terpinene <gamma>		0.04
24.406	Terpinolene		0.16
24.695	2-Nonanone		0.05
24.781	Clausenane <gamma>		0.13
25.337	Linalool		0.27
28.816	Camphor		0.07
29.039	Citronellal		0.06
30.558	Borneol <endo>		0.68
31.144	Terpinen-4-ol		0.08
32.137	Terpineol <alpha>		0.42
32.855	Decanal		0.13
34.226	Citronellol		0.07
35.053	Neral		0.57
35.857	Geraniol		0.36
37.085	Geranial		0.90
38.319	Bornyl acetate		0.14
38.795	2-Undecanone		0.12
41.758	Elemene <delta>		0.29
42.554	Cubebene <alpha>		0.26
44.021	Junipene		0.37
44.460	Copaene <alpha>		2.99
45.330	Elemene <beta>		0.89
46.121	Cedrene <alpha>		0.20
46.301	Cyperene		0.07
47.363	Caryophyllene <trans>		12.88
47.865	Elemene <gamma>		0.20
48.103	Bergamotene <trans-alpha>		1.24
48.564	Cedrene <beta>		0.14
49.279	Farnesene<(E)-beta>		0.29
49.374	Farnesene <(Z)-beta>		0.16
49.601	Humulene <alpha>		1.76
49.870	(-)-Alloaromadendrene		0.27
50.763	Muurolene <gamma>		0.39
51.107	Ar-Curcumene		7.73
51.185	Germacrene D		1.16
51.682	Selinene <beta>		0.26

R.Time	Name	Area%
52.003	Zingiberene<alpha>	22.82
52.187	Selinene <alpha>	1.07
52.309	Cadinene <gamma>	1.74
52.494	Farnesene <(E,E)-, alpha->	2.40
52.765	Bisabolene <beta->	5.48
53.404	Cadinene <delta>	0.82
53.545	Panasinsen <(-)-.alpha>	0.21
53.748	Sesquiphellandrene <beta>	8.26
53.909	Bisabolene <E-gamma>	0.22
55.184	Elemol <alpha->	0.20
55.524	Sesquisabinene hydrate	0.15
55.897	Germacrene B	0.49
56.905	Caryophyllene alcohol	0.15
57.660	7-epi-cis-Sesquisabinene hydrate	0.15
59.054	Zingiberenol	0.23
59.651	Humulane-1,6-dien-3-ol	0.16
60.057	Viridiflorol	0.30
60.940	Muurolol <alpha-epi>	0.12
61.437	Cubenol	0.34
		100.00