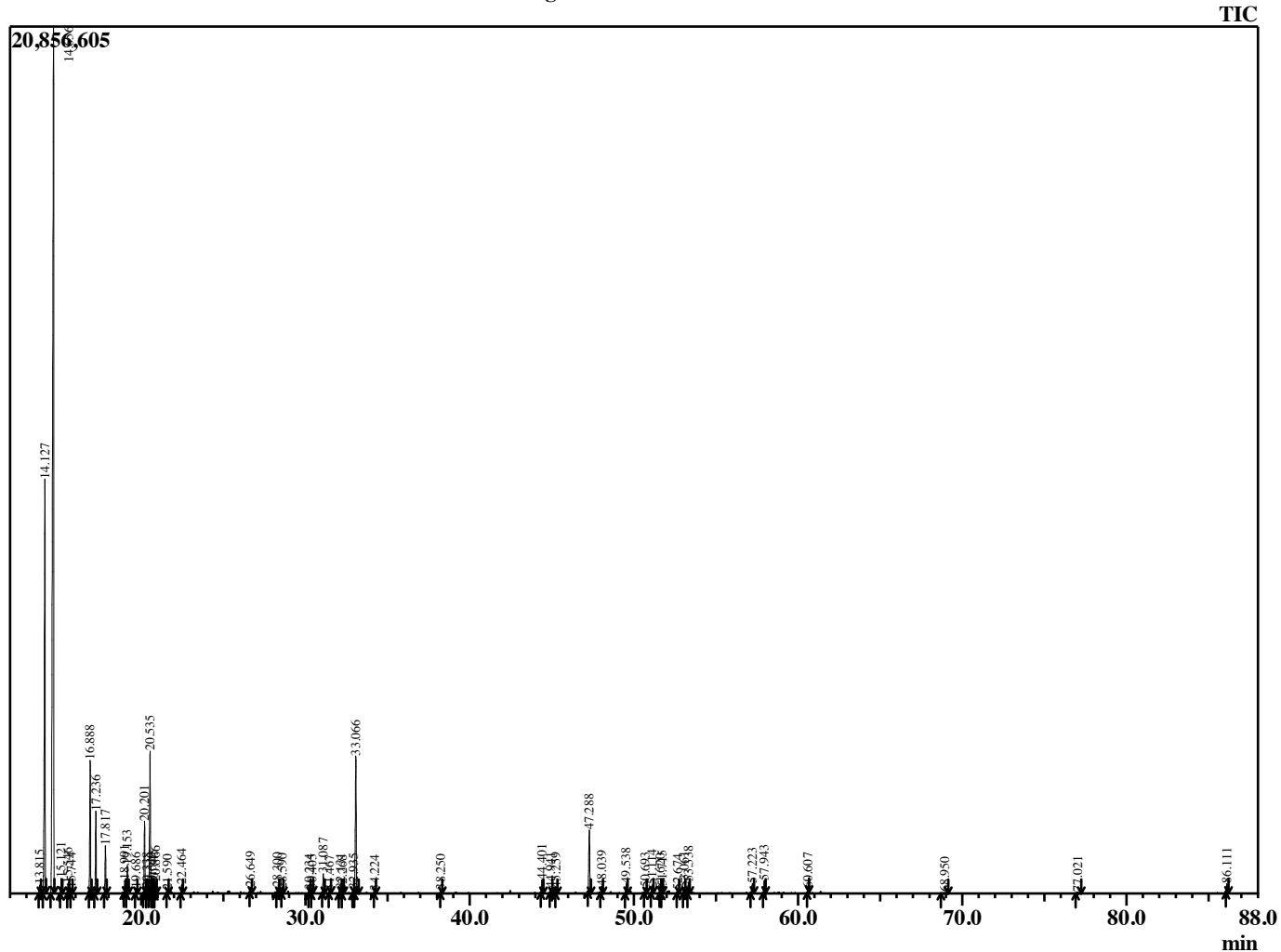


Sample Information

Analyzed by : B. Harris  
 Analyzed : 11/20/2015 10:59:50 PM  
 Sample Type : Essential Oil  
 Sample Name : BosCar5  
 Lot Number : P151120E  
 Injection Volume : 0.10

Chromatogram BosCar5 Lot P151120E



R.Time	Name	Area%
13.815	Pinene isomer	0.28
14.127	Thujene <alpha->	15.76
14.656	Pinene <alpha->	46.27
15.121	Thuja-2,4(10)diene	0.48
15.546	Camphene	0.32
15.744	Verbenene	0.16
16.888	Sabinene	4.62
17.236	Pinene <beta->	2.81
17.817	Myrcene	1.66
18.991	Phellandrene <alpha->	0.45
19.153	3-Carene	0.97
19.686	Terpinene <alpha->	0.18
20.201	Cymene <para->	2.66
20.338	Methyl octyl ether	0.18
20.535	Limonene	5.43
20.649	Phellandrene <beta>	0.17
20.745	1,8-Cineole	0.26
20.866	Ocimene <Z-beta>	0.40
21.590	Ocimene <E-beta>	0.09
22.464	Terpinene <gamma>	0.33
26.649	Thujone <alpha->	0.21
28.300	Pinocarveol <trans->	0.25
28.590	Verbenol <trans>	0.14
30.234	UFrank	0.13
30.405	p-Mentha-1,5-dien-8-ol	0.12
31.087	Terpinen-4-ol	0.77
31.467	p-Cymen-8-ol	0.10
32.131	Myrtenol	0.33
32.268	Methyl chavicol	0.10
32.935	Verbenone	0.15
33.066	Octyl acetate	5.70
34.224	Decanol Derivative	0.09
38.250	Bornyl acetate	0.12
44.401	Copaene <alpha->	0.58
44.941	Bourbonene <alpha->	0.20
45.259	Elemene <beta>	0.20
47.288	Caryophyllene <trans>	2.92
48.039	Bergamotene <trans-alpha>	0.31
49.538	Humulene <alpha>	0.42
50.693	Cadina-1(6),4-diene <trans>	0.23
51.114	Germacrene D	0.35
51.620	Selinene <beta>	0.15
51.715	Viridiflorene	0.32
52.674	Bisabolene <beta->	0.10
53.061	Cadinene <gamma>	0.24
53.338	Cadinene <delta->	0.48
57.223	Caryophyllene oxide	0.51
57.943	Viridiflorol	0.60
60.607	Muurolol <alpha-epi->	0.16
68.950	Elemene dimer <beta>	0.04
77.021	Phellandrene dimer <alpha>	0.08
86.111	Incensole	0.41
		100.00