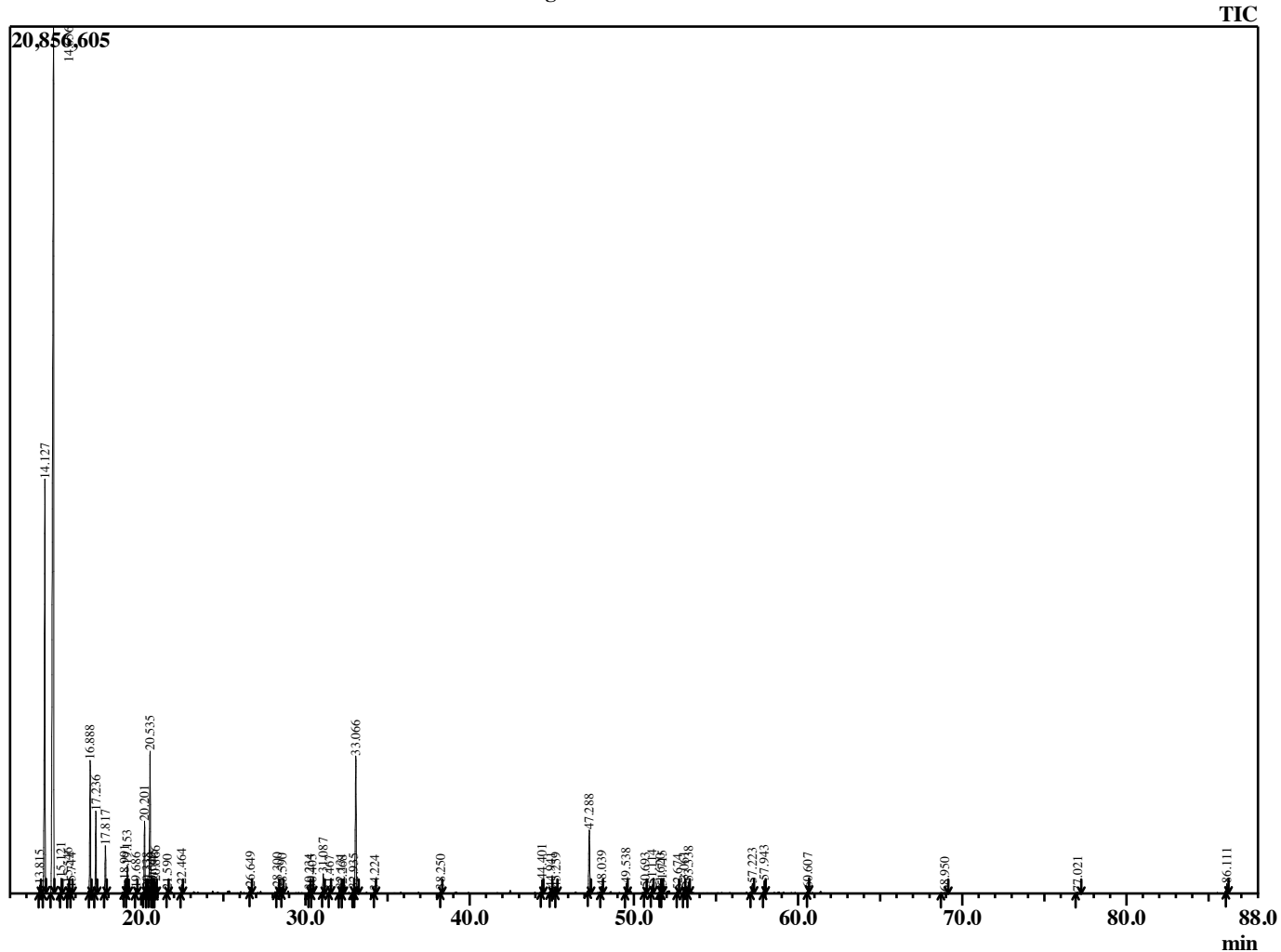


Sample Information

Analyzed by : B. Harris
 Analyzed : 11/20/2015 10:59:50 PM
 Sample Type : Essential Oil
 Sample Name : BosCar5
 Lot Number : P151120E
 Injection Volume : 0.10

Chromatogram BosCar5 Lot P151120E



| R.Time | Name | Area% |
|--------|-----------------------------|--------|
| 13.815 | Pinene isomer | 0.28 |
| 14.127 | Thujene <alpha> | 15.76 |
| 14.656 | Pinene <alpha> | 46.27 |
| 15.121 | Thuja-2,4(10)diene | 0.48 |
| 15.546 | Camphene | 0.32 |
| 15.744 | Verbenene | 0.16 |
| 16.888 | Sabinene | 4.62 |
| 17.236 | Pinene <beta> | 2.81 |
| 17.817 | Myrcene | 1.66 |
| 18.991 | Phellandrene <alpha> | 0.45 |
| 19.153 | 3-Carene | 0.97 |
| 19.686 | Terpinene <alpha> | 0.18 |
| 20.201 | Cymene <para> | 2.66 |
| 20.338 | Methyl octyl ether | 0.18 |
| 20.535 | Limonene | 5.43 |
| 20.649 | Phellandrene <beta> | 0.17 |
| 20.745 | 1,8-Cineole | 0.26 |
| 20.866 | Ocimene <Z-beta> | 0.40 |
| 21.590 | Ocimene <E-beta> | 0.09 |
| 22.464 | Terpinene <gamma> | 0.33 |
| 26.649 | Thujone <alpha> | 0.21 |
| 28.300 | Pinocarveol <trans> | 0.25 |
| 28.590 | Verbenol <trans> | 0.14 |
| 30.234 | UFrank | 0.13 |
| 30.405 | p-Mentha-1,5-dien-8-ol | 0.12 |
| 31.087 | Terpinen-4-ol | 0.77 |
| 31.467 | p-Cymen-8-ol | 0.10 |
| 32.131 | Myrtenol | 0.33 |
| 32.268 | Methyl chavicol | 0.10 |
| 32.935 | Verbenone | 0.15 |
| 33.066 | Octyl acetate | 5.70 |
| 34.224 | Decanol Derivative | 0.09 |
| 38.250 | Bornyl acetate | 0.12 |
| 44.401 | Copaene <alpha> | 0.58 |
| 44.941 | Bourbonene <alpha> | 0.20 |
| 45.259 | Elemene <beta> | 0.20 |
| 47.288 | Caryophyllene <trans> | 2.92 |
| 48.039 | Bergamotene <trans-alpha> | 0.31 |
| 49.538 | Humulene <alpha> | 0.42 |
| 50.693 | Cadina-1(6),4-diene <trans> | 0.23 |
| 51.114 | Germacrene D | 0.35 |
| 51.620 | Selinene <beta> | 0.15 |
| 51.715 | Viridiflorene | 0.32 |
| 52.674 | Bisabolene <beta> | 0.10 |
| 53.061 | Cadinene <gamma> | 0.24 |
| 53.338 | Cadinene <delta> | 0.48 |
| 57.223 | Caryophyllene oxide | 0.51 |
| 57.943 | Viridiflorol | 0.60 |
| 60.607 | Muurolol <alpha-epi> | 0.16 |
| 68.950 | Elemene dimer <beta> | 0.04 |
| 77.021 | Phellandrene dimer <alpha> | 0.08 |
| 86.111 | Incensole | 0.41 |
| | | 100.00 |