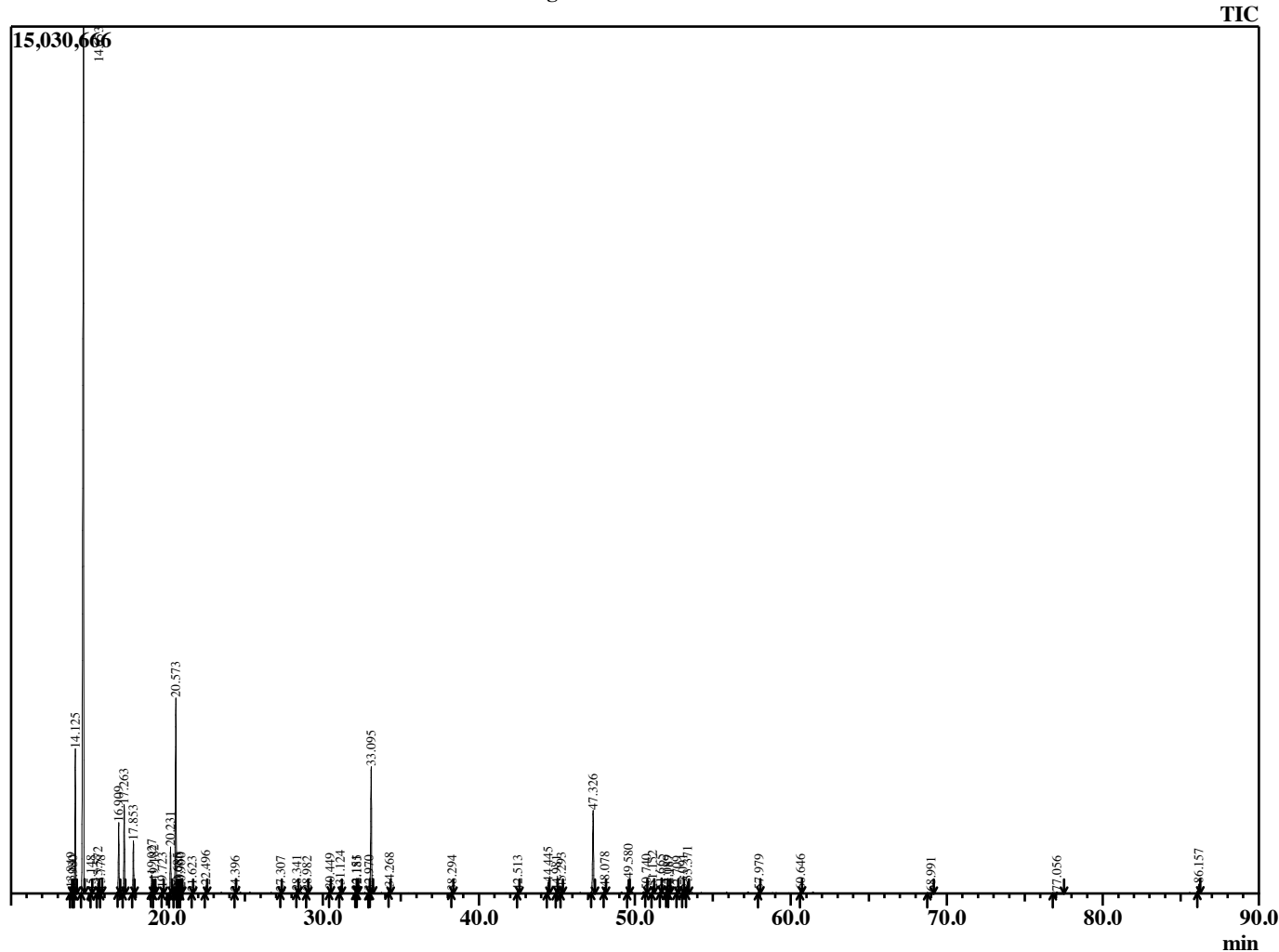


Sample Information

Analyzed by : B. Harris
 Analyzed : 8/6/2015 1:50:51 AM
 Sample Type : Essential Oil
 Sample Name : BosCarEOU
 Lot Number : 17769
 Injection Volume : 0.10

Chromatogram BosCarEOU Lot 17769



R.Time	Name	Area%
13.849	Pinene isomer	0.19
13.980	Tricyclene	0.09
14.125	Thujene <alpha->	6.05
14.653	Pinene <alpha->	49.78
15.148	Thuja-2,4(10)diene	0.10
15.572	Camphene	0.47
15.778	Verbenene	0.11
16.909	Sabinene	3.09
17.263	Pinene <beta->	3.90
17.853	Myrcene	2.32
19.027	Phellandrene <alpha->	0.85
19.182	3-Carene	0.58
19.723	Terpinene <alpha->	0.22
20.231	Cymene <para->	2.27
20.573	Limonene	10.23
20.685	Phellandrene <beta->	0.20
20.780	1,8-Cineole	0.26
20.900	Ocimene <Z-beta>	0.22
21.623	Ocimene <E-beta>	0.07
22.496	Terpinene <gamma->	0.38
24.396	Terpinolene	0.06
27.307	Campholaldehyde	0.06
28.341	Pinocarveol <trans>	0.11
28.982	p-Menthadienol isomer	0.08
30.449	p-Mentha-1,5-dien-8-ol	0.19
31.124	Terpinen-4-ol	0.42
32.151	Terpinyl formate <alpha->	0.10
32.185	Myrtenal	0.08
32.970	Verbenone	0.09
33.095	Octyl acetate	6.77
34.268	Decanol Derivative	0.26
38.294	Bornyl acetate	0.10
42.513	Cubebene <alpha->	0.13
44.445	Copaene <alpha->	0.64
44.981	Bourbonene <Beta>	0.10
45.293	Elemene <beta->	0.33
47.326	Caryophyllene <trans>	5.02
48.078	Bergamotene <trans-alpha>	0.32
49.580	Humulene <alpha->	0.83
50.740	Cadina-1(6),4-diene <trans>	0.18
51.152	Germacrene D	0.42
51.665	Selinene <beta->	0.11
52.089	Selinene <alpha->	0.11
52.187	Muurolene	0.10
52.709	Bisabolene <beta->	0.06
53.091	Cadinene <gamma->	0.17
53.371	Cadinene <delta->	0.63
57.979	Viridiflorol	0.17
60.646	Cadinol <tau>	0.18
68.991	Phellandrene dimer <alpha->	0.05
77.056	Elemene dimer <beta->	0.09
86.157	Incensole + Incensole acetate	0.63
		100.00