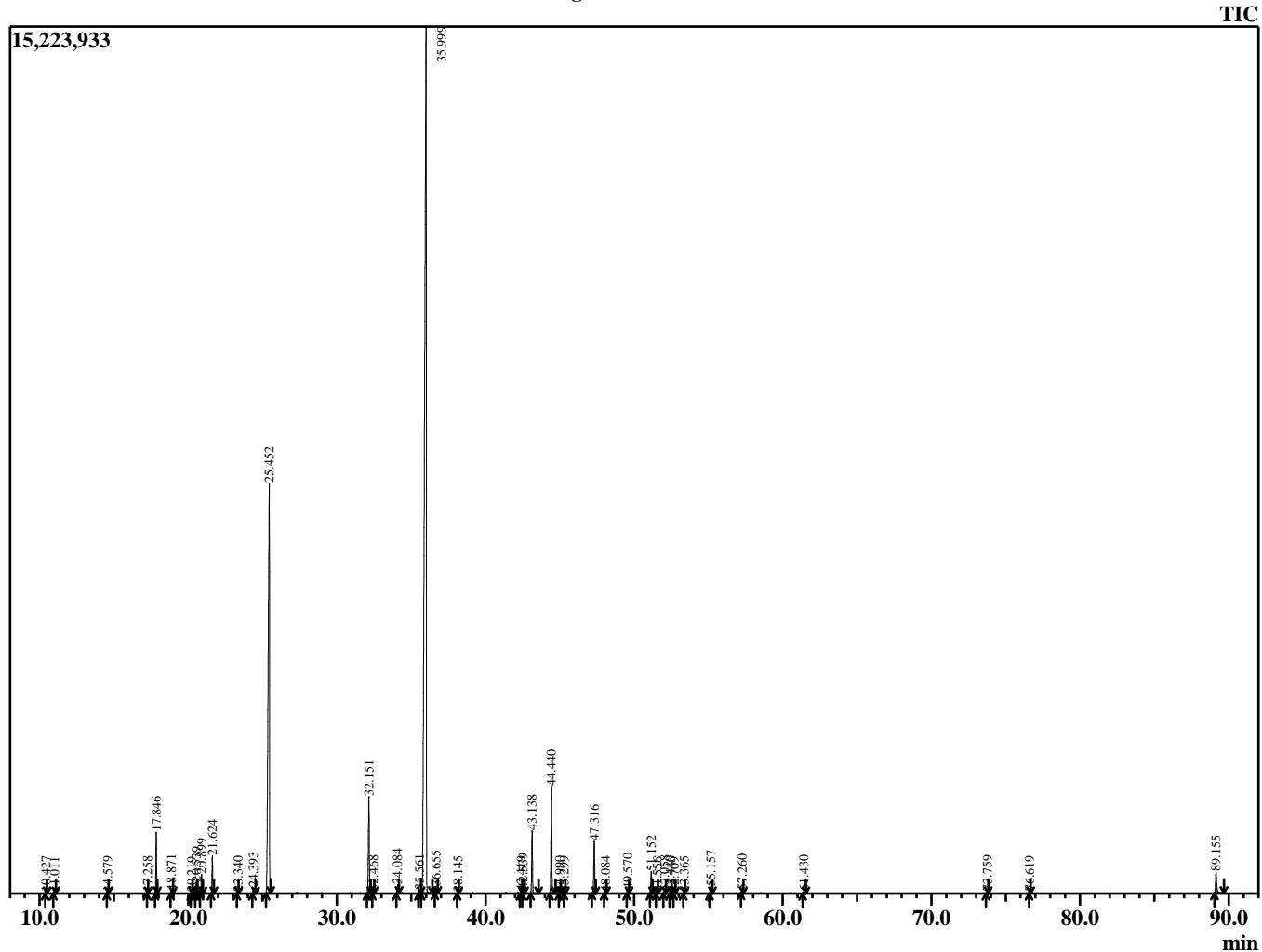


Sample Information

Analyzed by : B. Harris
 Analyzed : 12/21/2015 8:01:43 PM
 Sample Type : Essential Oil
 Sample Name : SalSci2
 Lot Number : 98895
 Injection Volume : 0.10

Chromatogram SalSci2 Lot 98895



R.Time	Name	Area%
10.427	Hex-3(Z)-enol	0.03
11.011	Hexanol <n->	0.02
14.579	Pinene <alpha>	0.03
17.258	Pinene <beta>	0.04
17.846	Myrcene	1.60
18.871	Pseudolimonene	0.11
20.219	Cymene <para->	0.02
20.539	Limonene	0.30
20.899	Ocimene <Z-beta>	0.52
21.624	Ocimene <E-beta>	1.05
23.340	Linalool oxide <cis-(furanoid)>	0.03
24.393	Terpinolene + Sabinene hydrate <cis>	0.25
25.452	Linalool	21.38
32.151	Terpineol <alpha->	3.34
32.468	Terpineol <gamma>	0.08
34.084	Nerol	0.28
35.561	UClary	0.13
35.999	Linalyl acetate	59.93
36.655	UClary	0.21
38.145	Isopulegyl acetate	0.04
42.419	Terpinyl acetate <alpha->	0.07
42.539	Citronellyl acetate	0.15
43.138	Neryl acetate	2.07
44.440	Geranyl acetate	3.62
44.990	Bourbonene <alpha>	0.04
45.299	Elemene <beta>	0.03
47.316	Caryophyllene	1.86
48.084	Bergamotene <trans-alpha>	0.04
49.570	Humulene <alpha>	0.12
51.152	Germacrene D	0.75
51.556	Eremophiline	0.03
52.058	Bicyclogermacrene	0.08
52.440	Farnesene <alpha>	0.03
52.709	Bisabolene <beta>	0.03
53.365	Cadinene <delta->	0.04
55.157	Elemol <alpha->	0.24
57.260	Caryophyllene oxide	0.11
61.430	Eudesmol <5-epi-7-epi-alpha>	0.10
73.759	Monocylcofarnesylacetone	0.08
76.619	UClary	0.07
89.155	Sclareol	1.02
		100.00