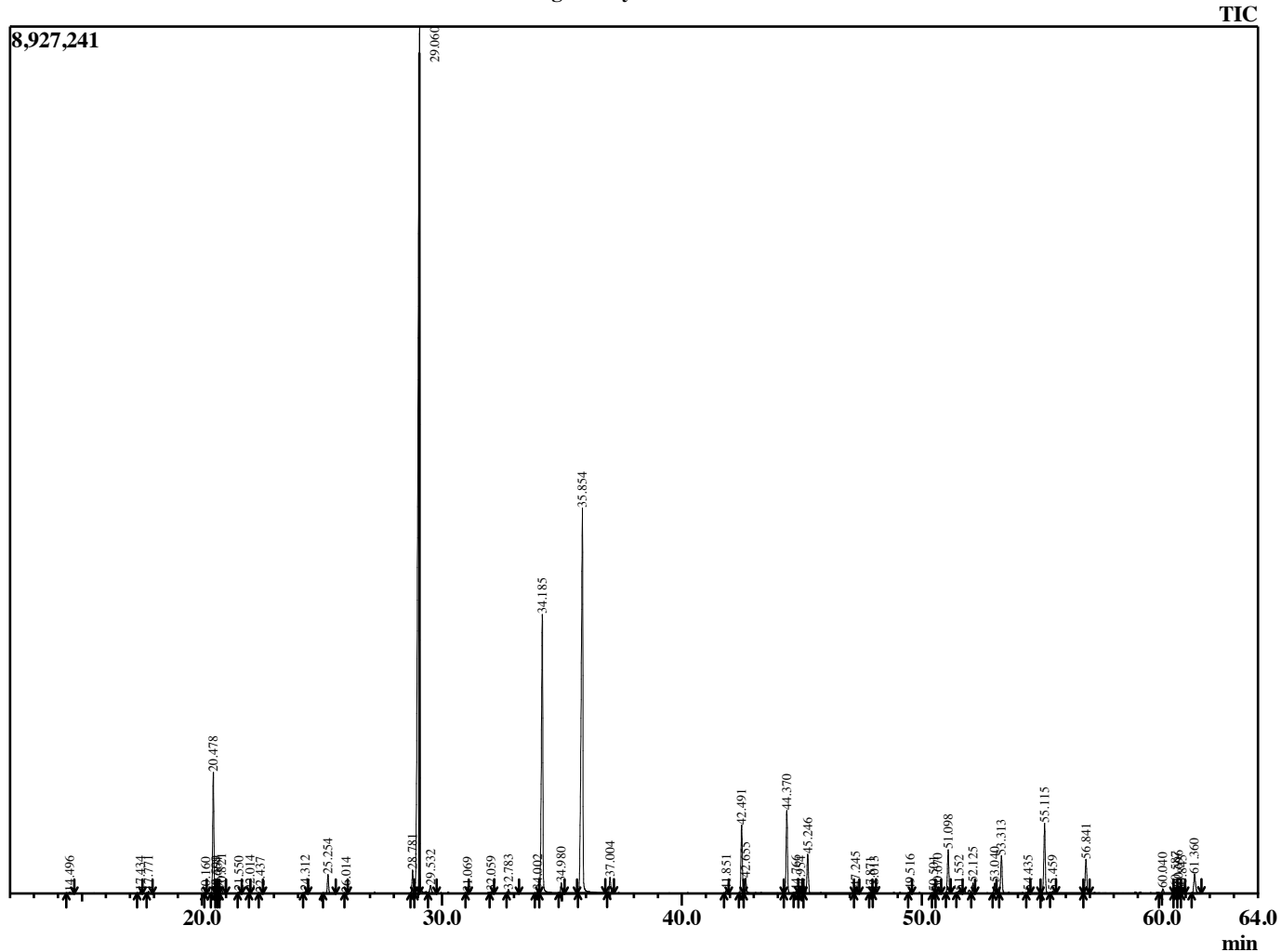


### Sample Information

**Analyzed by** : B. Harris  
**Analyzed** : 2/27/2015 1:06:25 PM  
**Sample Type** : Essential Oil  
**Sample Name** : CymWin2  
**Lot Number** : 140855  
**Injection Volume** : 0.10

Chromatogram CymWin2 Lot 140855



| R.Time | Name                        | Area%  |
|--------|-----------------------------|--------|
| 14.496 | Pinene <alpha>              | 0.05   |
| 17.434 | 5-Hepten-2-one, 6-methyl-   | 0.05   |
| 17.771 | Myrcene                     | 0.07   |
| 20.160 | Cymene <para>               | 0.01   |
| 20.478 | Limonene                    | 4.27   |
| 20.599 | Phellandrene <beta>         | 0.05   |
| 20.664 | 1,8-Cineole                 | 0.02   |
| 20.821 | Ocimene <Z-beta>            | 0.18   |
| 21.550 | Ocimene <E-beta>            | 0.07   |
| 22.014 | Bergamal                    | 0.05   |
| 22.437 | Terpinene <gamma>           | 0.02   |
| 24.312 | Terpinolene                 | 0.08   |
| 25.254 | Linalool                    | 0.74   |
| 26.014 | Rose oxide <cis>            | 0.02   |
| 28.781 | Isopulegol                  | 0.92   |
| 29.060 | Citronellal                 | 36.56  |
| 29.532 | Isopulegol <iso>            | 0.45   |
| 31.069 | Terpinen-4-ol               | 0.03   |
| 32.059 | Terpineol <alpha>           | 0.07   |
| 32.783 | Decanal                     | 0.16   |
| 34.002 | Nerol                       | 0.13   |
| 34.185 | Citronellol                 | 12.83  |
| 34.980 | Neral                       | 0.44   |
| 35.854 | Geraniol                    | 20.03  |
| 37.004 | Geranial                    | 0.67   |
| 41.851 | Menthol <8-hydroxy-neo>     | 0.15   |
| 42.491 | Citronellyl acetate         | 2.90   |
| 42.655 | Eugenol                     | 0.79   |
| 44.370 | Geranyl acetate             | 3.46   |
| 44.766 | Elemene isomer              | 0.08   |
| 44.954 | Bourbonene <beta>           | 0.11   |
| 45.246 | Elemene <beta>              | 1.84   |
| 47.245 | Caryophyllene <trans>       | 0.29   |
| 47.871 | Copaene <beta>              | 0.03   |
| 48.013 | Bergamotene <trans-alpha>   | 0.05   |
| 49.516 | Humulene <alpha>            | 0.14   |
| 50.501 | Murrola-4(14),5-diene <cis> | 0.05   |
| 50.670 | Cadina-1(6),4-diene         | 0.20   |
| 51.098 | Germacrene D                | 1.91   |
| 51.552 | Farnesene <(E,E)-alpha>     | 0.14   |
| 52.125 | Muurolene <alpha>           | 0.44   |
| 53.040 | Cadinene <gamma>            | 0.46   |
| 53.313 | Cadinene <delta>            | 1.76   |
| 54.435 | Cadinene <alpha>            | 0.11   |
| 55.115 | Elemol <alpha>              | 3.29   |
| 55.459 | Neryl butyrate              | 0.08   |
| 56.841 | Elemol isomer               | 1.61   |
| 60.040 | Eudesmol <gamma>            | 0.28   |
| 60.587 | Cadinol <tau>               | 0.30   |
| 60.696 | Cadinol <epi-alpha>         | 0.36   |
| 60.845 | Cadinol <delta>             | 0.11   |
| 61.360 | Cadinol <alpha>             | 1.06   |
|        |                             | 100.00 |