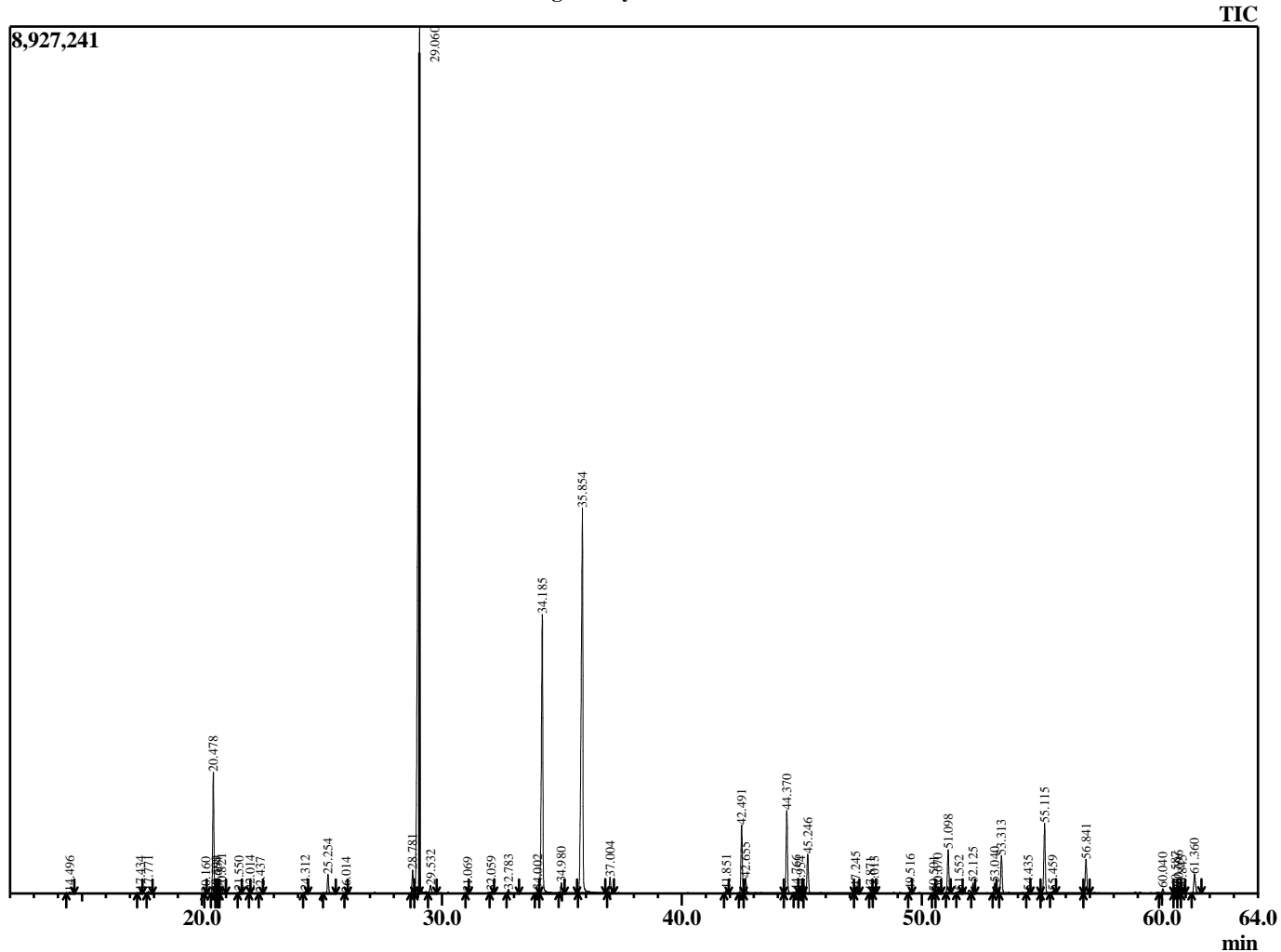


Sample Information

Analyzed by : B. Harris
 Analyzed : 2/27/2015 1:06:25 PM
 Sample Type : Essential Oil
 Sample Name : CymWin2
 Lot Number : 140855
 Injection Volume : 0.10

Chromatogram CymWin2 Lot 140855



R.Time	Name	Area%
14.496	Pinene <alpha->	0.05
17.434	5-Hepten-2-one, 6-methyl-	0.05
17.771	Myrcene	0.07
20.160	Cymene <para->	0.01
20.478	Limonene	4.27
20.599	Phellandrene <beta->	0.05
20.664	1,8-Cineole	0.02
20.821	Ocimene <Z-beta->	0.18
21.550	Ocimene <E-beta->	0.07
22.014	Bergamal	0.05
22.437	Terpinene <gamma->	0.02
24.312	Terpinolene	0.08
25.254	Linalool	0.74
26.014	Rose oxide <cis->	0.02
28.781	Isopulegol	0.92
29.060	Citronellal	36.56
29.532	Isopulegol <iso->	0.45
31.069	Terpinen-4-ol	0.03
32.059	Terpineol <alpha->	0.07
32.783	Decanal	0.16
34.002	Nerol	0.13
34.185	Citronellol	12.83
34.980	Neral	0.44
35.854	Geraniol	20.03
37.004	Geranial	0.67
41.851	Menthol <8-hydroxy-neo>	0.15
42.491	Citronellyl acetate	2.90
42.655	Eugenol	0.79
44.370	Geranyl acetate	3.46
44.766	Elemene isomer	0.08
44.954	Bourbonene <beta->	0.11
45.246	Elemene <beta->	1.84
47.245	Caryophyllene <trans->	0.29
47.871	Copaene <beta->	0.03
48.013	Bergamotene <trans-alpha->	0.05
49.516	Humulene <alpha->	0.14
50.501	Murrola-4(14),5-diene <cis->	0.05
50.670	Cadina-1(6),4-diene	0.20
51.098	Germacrene D	1.91
51.552	Farnesene <(E,E)-alpha->	0.14
52.125	Muurolene <alpha->	0.44
53.040	Cadinene <gamma->	0.46
53.313	Cadinene <delta->	1.76
54.435	Cadinene <alpha->	0.11
55.115	Elemol <alpha->	3.29
55.459	Neryl butyrate	0.08
56.841	Elemol isomer	1.61
60.040	Eudesmol <gamma->	0.28
60.587	Cadinol <tau->	0.30
60.696	Cadinol <epi-alpha->	0.36
60.845	Cadinol <delta->	0.11
61.360	Cadinol <alpha->	1.06
		100.00