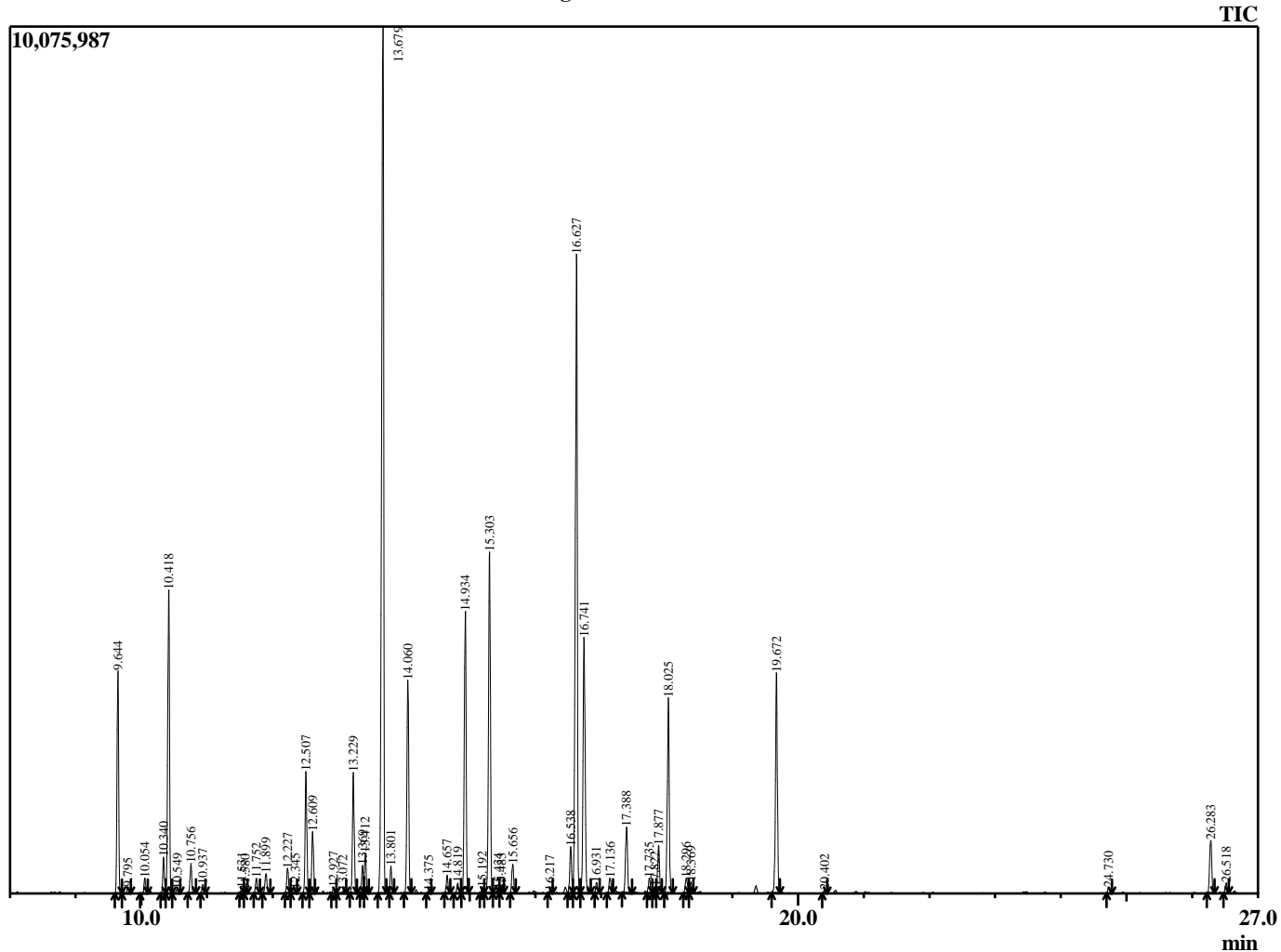


Sample Information

Analyzed by : B. Harris
 Analyzed : 3/17/2016 1:10:14 PM
 Sample Type : Essential Oil
 Sample Name : AntNob2
 Lot Number : 27443
 Injection Volume : 0.10

Chromatogram AntNob2 Lot 27443



R.Time	Name	Area%
9.644	Isobutyl isobutyrate	4.11
9.795	Prenyl acetate	0.11
10.054	Chamomile unknown	0.30
10.340	Isobutyl methacrylate	0.70
10.418	Pinene <alpha>	6.23
10.549	Butyrate <isopropyl-, 2-methyl->	0.10
10.756	Chamomile unknown	0.58
10.937	Camphene	0.19
11.531	Sabinene	0.10
11.580	Hexyl acetate	0.06
11.752	Pinene <beta>	0.31
11.899	Ethyl tiglate <isomer>	0.46
12.227	Isobutyl 2-methylbutanoate	0.50
12.345	Isobutyl isovalerate	0.08
12.507	Isoamyl isobutyrate	2.51
12.609	2-Methylbutyl isobutyrate	1.30
12.927	Allyl tiglate	0.13
13.072	Cymene <para->	0.06
13.229	Limonene	2.48
13.369	Isopentyl methacrylate	0.60
13.412	Prenyl isobutyrate	0.80
13.679	Angelate <isobutyl->	20.76
13.801	Prenyl acetate	0.55
14.060	Butyl tiglate <2->	4.45
14.375	Butanoate <3-methylpentyl,3-methyl->	0.05
14.657	Camphenilone	0.38
14.819	Butyl angelate	0.21
14.934	Isobutyl tiglate	5.87
15.192	isopentyl 2-methylbutanoate	0.13
15.303	Butyrate <2-methylbutyl-, 2-methyl->	7.46
15.434	Isovalerate <2-methylbutyl->	0.12
15.483	Hexanoic acid, 2-methylpropyl ester	0.08
15.656	Isobutyrate <hexyl->	0.61
16.217	Campholenal <alpha>	0.05
16.538	Butanoic Acid Ester	1.07
16.627	Isoamyl angelate	14.91
16.741	Isoamyl tiglate	6.15
16.931	Amyl angelate isomer	0.24
17.136	Menthone	0.35
17.388	Pinocarvone	1.58
17.735	Menthol	0.34
17.822	Isopinocampone	0.15
17.877	Angelate isomer	1.05
18.025	Butyl tiglate <2-methyl-1>	4.34
18.296	Butanoate <3-methylpentyl,3-methyl->	0.42
18.369	Myrtenal	0.28
19.672	Amyl angelate <4-methyl->	4.92
20.402	Tiglate <3(Z)-hexenyl->	0.07
24.730	Caryophyllene <trans>	0.13
26.283	Germacrene D	1.31
26.518	Farnesene <alpha>	0.23
		100.00