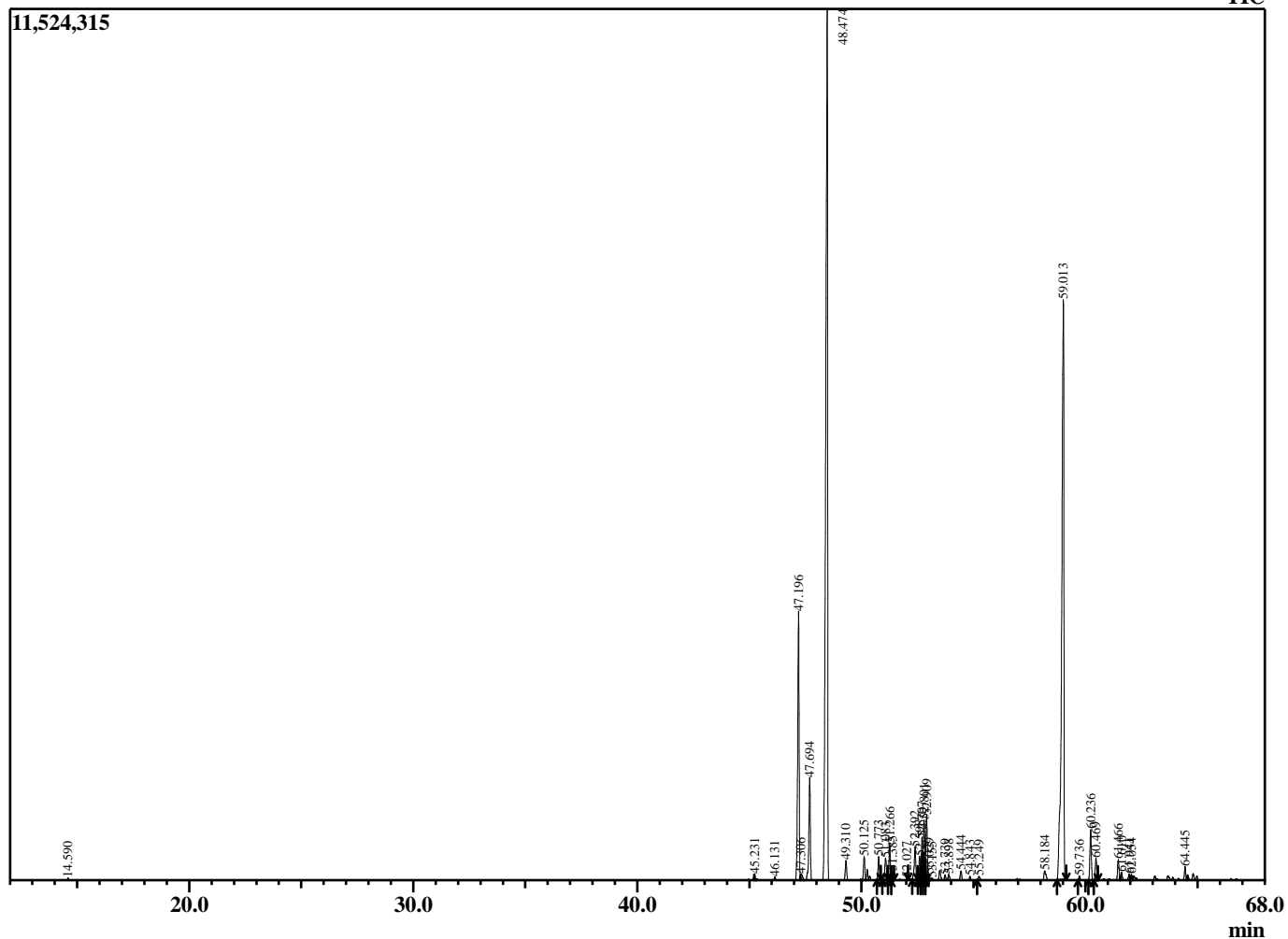


Sample Information

Analyzed by : B. Harris  
 Analyzed : 7/14/2015 4:32:08 PM  
 Sample Type : Essential Oil  
 Sample Name : JunMex2  
 Lot Number : 9204  
 Injection Volume : 0.10

Chromatogram JunMex2 Lot 9204



R.Time	Name	Area%
14.590	Pinene <alpha>	0.08
45.231	Duprezianene <alpha>	0.12
46.131	Bergamotene <cis-alpha>	0.14
47.196	Cedrene <alpha>	9.23
47.306	Cedrene <beta isomer>	0.34
47.694	Cedrene <beta>	3.61
48.474	Thujopsene <cis>	38.31
49.310	Himachalene <alpha>	0.73
50.125	Acoradiene <beta>	0.81
50.773	Thujopsene <cis>	0.71
51.083	Himachalene <gamma>	0.78
51.266	Chamigrene <beta>	1.18
51.385	Thujopsene <cis>	0.29
52.027	Alaskene <beta>	0.06
52.392	Himachalene <beta>	1.23
52.598	Himachalene <delta>	0.79
52.707	Cedrene-V6	1.37
52.801	Chamigrene <alpha>	2.04
52.909	Cuparene	2.13
53.029	Alaskene <alpha>	0.20
53.155	Cuprenene <delta>	0.13
53.739	Sesquiphellandrene <beta>	0.21
53.898	Himachalene <a-dehydro-ar>	0.27
54.444	Cuprenene <gamma>	0.38
54.843	Sesquiterpenol	0.14
55.249	Cuprenene <delta>	0.16
58.184	Cedrenol	0.54
59.013	Cedrol	29.43
59.736	Cedrol <epi>	0.15
60.236	Acorenol <alpha>	1.73
60.469	Acorenol <beta>	0.72
61.466	Cedr-8-en-13-ol	0.75
61.610	Unidentified sesquiterpene	0.33
61.941	Cedrenal <1,7-diepi-alpha>	0.24
62.054	Cedr-8-en-15-ol	0.20
64.445	Bisabolol <alpha>	0.47
		100.00